

LIBERTY — TRUMPY



Builder: TRUMPY

Year Built: 1954

Model: cruiser

Price: \$295,000 USD

Location: United States

LOA: 68' (20.73mm)

Beam: 16.33

Min Draft: 3' 5" (1.04mm)

Max Draft: 3' 7" (1.09mm)

Cruise Speed: 9 Knots Kts. (10 MPH)

Max Speed: 13 Knots Kts. (15 MPH)

Our experienced yacht broker, Andrey Shestakov, will help you choose and buy a yacht that best suits your needs **Liberty — TRUMPY** from our catalogue. Presently, at Shestakov Yacht Sales Inc., we have a wide variety of yachts available on our sale's list. We also work in close contact with all the big yacht manufacturers from all over the world.

If you would like to buy a yacht **Liberty — TRUMPY** or would like help answering any questions concerning purchasing, selling or chartering a yacht, please call **+1(954)274-4435**

TABLE OF CONTENTS

TABLE OF CONTENTS	2
SPECIFICATIONS	5
Overview	5
Basic Information	5
Dimensions	5
Speed, Capacities and Weight	6
Accommodations	6
Hull and Deck Information	6
Engine Information	6
PHOTOS	7
68-1954-Trumpy-Cruiser-01	7
68-1954-Trumpy-Cruiser-02	7
68-1954-Trumpy-Cruiser-03	7
68-1954-Trumpy-Cruiser-04	7
68-1954-Trumpy-Cruiser-05	7
68-1954-Trumpy-Cruiser-06	7
68-1954-Trumpy-Cruiser-07	8
68-1954-Trumpy-Cruiser-08	8
68-1954-Trumpy-Cruiser-09	8
68-1954-Trumpy-Cruiser-10	8
68-1954-Trumpy-Cruiser-11	8
68-1954-Trumpy-Cruiser-12	8
68-1954-Trumpy-Cruiser-13	9
68-1954-Trumpy-Cruiser-14	9
68-1954-Trumpy-Cruiser-15	9
68-1954-Trumpy-Cruiser-16	9
68-1954-Trumpy-Cruiser-17	9
68-1954-Trumpy-Cruiser-18	9

68-1954-Trumpy-Cruiser-19	10
68-1954-Trumpy-Cruiser-20	10
68-1954-Trumpy-Cruiser-21	10
68-1954-Trumpy-Cruiser-22	10
68-1954-Trumpy-Cruiser-23	11
68-1954-Trumpy-Cruiser-24	11
68-1954-Trumpy-Cruiser-25	11
68-1954-Trumpy-Cruiser-26	11
68-1954-Trumpy-Cruiser-27	11
68-1954-Trumpy-Cruiser-28	11
68-1954-Trumpy-Cruiser-29	12
68-1954-Trumpy-Cruiser-30	12
68-1954-Trumpy-Cruiser-31	12
68-1954-Trumpy-Cruiser-32	12
68-1954-Trumpy-Cruiser-33	12
68-1954-Trumpy-Cruiser-34	12
68-1954-Trumpy-Cruiser-36	13
68-1954-Trumpy-Cruiser-35	13
68-1954-Trumpy-Cruiser-38	13
68-1954-Trumpy-Cruiser-37	13
68-1954-Trumpy-Cruiser-39	13
68-1954-Trumpy-Cruiser-40	13
68-1954-Trumpy-Cruiser-41	14
68-1954-Trumpy-Cruiser-42	14
68-1954-Trumpy-Cruiser-43	14
CONTACTS	15
Contact details	15
Telephones	15
Office hours	15

Address

15

SPECIFICATIONS

Overview

"OWNERS HAVE OUTGROWN HER AND WISH TO FIND A NEW PROJECT. PERFECT OPPORTUNITY TO OWN A PART OF UNITED STATES MARITIME HISTORY.

John Trumpy designed and built the most iconic American motor yachts from the 1920's until the 1970's. They always evoke a much kinder, gentler time in American history wherever they grace a harbor or marina. That was a time when yachts were yachts and life was simpler. John bestowed much love, elegance and functionality into each of the over 400 yachts that were built bearing the name Trumpy.

LIBERTY started life on John's drafting board as Design Number 368 and was designated the moniker SERANO. She was built in Annapolis, Md.

LIBERTY, IS READY TO CARRY ON HER TRADITION OF GRACEFUL CRUISING WITH A NEW OWNER AND FAMILY.

- Twin GM 6V71N diesels removed and rebuilt, now have 650 hours
- 3 Stateroom/2 Head Layout plus Crew
- Extreme Restoration was begun in 2016 and is still ongoing

Basic Information

Category: cruiser

Model Year: 1954

Year Built: 1954

Country: United States

Dimensions

LOA: 68' (20.73mm)

Beam: 16.33

Min Draft: 3' 5" (1.04mm)

Max Draft: 3' 7" (1.09mm)

Speed, Capacities and Weight

Cruise Speed: 9 Knots Kts. (10 MPH)

Max Speed: 13 Knots Kts. (15 MPH)

Water Capacity: 120 Gallons

Holding Tank: 45 Gal Gallons

Fuel Capacity: 175 Gal Gallons

Accommodations

Total Cabins: 2

Total Heads: 3

Hull and Deck Information

Hull Material: Wood

Engine Information

Engines: 2

Manufacturer: GM

Engine Type: Inboard

Fuel Type: Diesel

PHOTOS

68-1954-Trumpy-Cruiser-01



68-1954-Trumpy-Cruiser-02



68-1954-Trumpy-Cruiser-03



68-1954-Trumpy-Cruiser-04



68-1954-Trumpy-Cruiser-05



68-1954-Trumpy-Cruiser-06



68-1954-Trumpy-Cruiser-07



68-1954-Trumpy-Cruiser-08



68-1954-Trumpy-Cruiser-09



68-1954-Trumpy-Cruiser-10



68-1954-Trumpy-Cruiser-11



68-1954-Trumpy-Cruiser-12



68-1954-Trumpy-Cruiser-13



68-1954-Trumpy-Cruiser-14



68-1954-Trumpy-Cruiser-15



68-1954-Trumpy-Cruiser-16



68-1954-Trumpy-Cruiser-17



68-1954-Trumpy-Cruiser-18



68-1954-Trumpy-Cruiser-19



68-1954-Trumpy-Cruiser-20



68-1954-Trumpy-Cruiser-21



68-1954-Trumpy-Cruiser-22



68-1954-Trumpy-Cruiser-23



68-1954-Trumpy-Cruiser-24



68-1954-Trumpy-Cruiser-25



68-1954-Trumpy-Cruiser-26



68-1954-Trumpy-Cruiser-27



68-1954-Trumpy-Cruiser-28



68-1954-Trumpy-Cruiser-29



68-1954-Trumpy-Cruiser-30



68-1954-Trumpy-Cruiser-31



68-1954-Trumpy-Cruiser-32



68-1954-Trumpy-Cruiser-33



68-1954-Trumpy-Cruiser-34



68-1954-Trumpy-Cruiser-35



68-1954-Trumpy-Cruiser-36



68-1954-Trumpy-Cruiser-38



68-1954-Trumpy-Cruiser-37



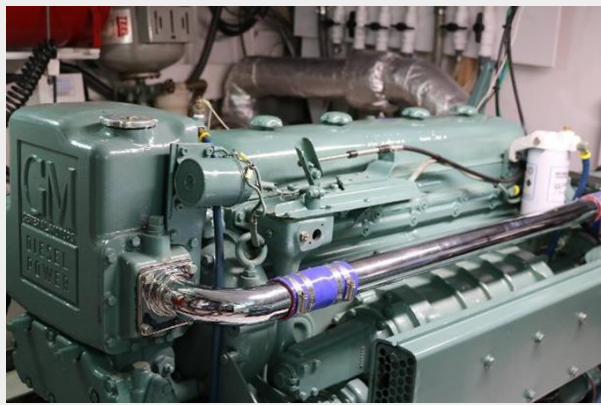
68-1954-Trumpy-Cruiser-39



68-1954-Trumpy-Cruiser-40



68-1954-Trumpy-Cruiser-41



68-1954-Trumpy-Cruiser-42



68-1954-Trumpy-Cruiser-43



CONTACTS

Andrey Shestakov, leading yacht broker of the sales department of Shestakov Yacht Sales Inc. Shestakov Yacht Sales Inc., the official representative of the Miami/Fort Lauderdale FL headquarters.

Contact details

Email: andrey@shestakovyachtsales.com

Web: shestakovyachtsales.com/en/

Telephones

USA: +1(954)274-4435

Office hours

Monday – Saturday: **9:00 - 21:00** EDT

Sunday: **closed**

Address



Harbour Towne Marina, 850 NE 3rd St,
STE 213, Dania, FL 33004