

## REEL BLESSING — OCEAN SPORT



**Builder:** OCEAN SPORT

**Year Built:** 2004

**Model:** Motor Yacht

**Price:** PRICE ON APPLICATION

**Location:** United States

**LOA:** 52' (15.85mm)

**Beam:** 16.33

**Max Draft:** 4' 4" (1.32mm)

**Cruise Speed:** 28 Knots Kts. (32 MPH)

**Max Speed:** 35 Knots Kts. (40 MPH)

Our experienced yacht broker, Andrey Shestakov, will help you choose and buy a yacht that best suits your needs **Reel Blessing — OCEAN SPORT** from **our catalogue**. Presently, at **Shestakov Yacht Sales Inc.**, we have a wide variety of yachts available on **our sale's list**. We also work in close contact with all the big **yacht manufacturers** from all over the world.

If you would like to buy a yacht **Reel Blessing — OCEAN SPORT** or would like help answering any questions concerning purchasing, selling or chartering a yacht, please call **+1(954)274-4435**

# TABLE OF CONTENTS

---

TABLE OF CONTENTS	2
SPECIFICATIONS	5
Overview	5
Basic Information	5
Dimensions	5
Speed, Capacities and Weight	5
Accommodations	5
Hull and Deck Information	5
Engine Information	6
PHOTOS	7
52-2004-Ocean-Sportfish-02	7
52-2004-Ocean-Sportfish-01	7
52-2004-Ocean-Sportfish-03	7
52-2004-Ocean-Sportfish-04	7
52-2004-Ocean-Sportfish-06	8
52-2004-Ocean-Sportfish-05	8
52-2004-Ocean-Sportfish-08	8
52-2004-Ocean-Sportfish-07	8
52-2004-Ocean-Sportfish-09	9
52-2004-Ocean-Sportfish-10	9
52-2004-Ocean-Sportfish-11	9
52-2004-Ocean-Sportfish-12	9
52-2004-Ocean-Sportfish-14	10
52-2004-Ocean-Sportfish-13	10
52-2004-Ocean-Sportfish-15	10
52-2004-Ocean-Sportfish-16	10
52-2004-Ocean-Sportfish-17	11
52-2004-Ocean-Sportfish-18	11

---

52-2004-Ocean-Sportfish-19	11
52-2004-Ocean-Sportfish-20	11
52-2004-Ocean-Sportfish-21	12
52-2004-Ocean-Sportfish-22	12
52-2004-Ocean-Sportfish-23	12
52-2004-Ocean-Sportfish-24	12
52-2004-Ocean-Sportfish-25	13
52-2004-Ocean-Sportfish-26	13
52-2004-Ocean-Sportfish-27	13
52-2004-Ocean-Sportfish-28	13
52-2004-Ocean-Sportfish-29	14
52-2004-Ocean-Sportfish-30	14
52-2004-Ocean-Sportfish-31	14
52-2004-Ocean-Sportfish-32	14
52-2004-Ocean-Sportfish-33	15
52-2004-Ocean-Sportfish-34	15
52-2004-Ocean-Sportfish-35	15
52-2004-Ocean-Sportfish-36	15
52-2004-Ocean-Sportfish-37	16
52-2004-Ocean-Sportfish-38	16
52-2004-Ocean-Sportfish-39	16
52-2004-Ocean-Sportfish-40	16
52-2004-Ocean-Sportfish-41	17
52-2004-Ocean-Sportfish-42	17
52-2004-Ocean-Sportfish-43	17
52-2004-Ocean-Sportfish-44	17
CONTACTS	18
Contact details	18
Telephones	18

---

---

Office hours	18
Address	18

---

# SPECIFICATIONS

---

## Overview

---

CAT powered Sportfisher with 3 Cabin/3 Head layout. Teak joinery interior, Amtico flooring throughout, Pipetowers full Tuna Tower.

One of the most custom Sportfishers on the market today. Must be seen to be appreciated.

## Basic Information

---

**Category:** Motor Yacht

**Model Year:** 2004

**Year Built:** 2004

**Country:** United States

## Dimensions

---

**LOA:** 52' (15.85mm)

**Beam:** 16.33

**Max Draft:** 4' 4" (1.32mm)

## Speed, Capacities and Weight

---

**Cruise Speed:** 28 Knots Kts. (32 MPH) **Max Speed:** 35 Knots Kts. (40 MPH)

**Water Capacity:** 150 Gallons

**Fuel Capacity:** 860 Gal Gallons

## Accommodations

---

**Total Cabins:** 2

**Total Heads:** 3

## Hull and Deck Information

---

**Hull Material:** Fiberglass

---

## Engine Information

---

**Engines:** 2

**Manufacturer:** Caterpillar

**Engine Type:** Inboard

**Fuel Type:** Diesel

# PHOTOS

**52-2004-Ocean-Sportfish-01**



**52-2004-Ocean-Sportfish-02**



**52-2004-Ocean-Sportfish-03**



**52-2004-Ocean-Sportfish-04**





**52-2004-Ocean-Sportfish-05**



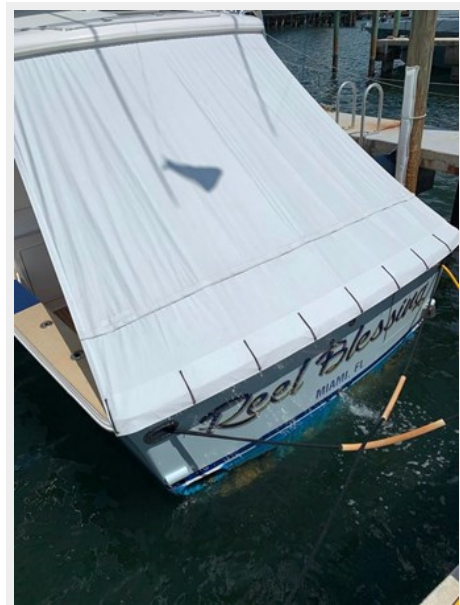
**52-2004-Ocean-Sportfish-06**



**52-2004-Ocean-Sportfish-07**



**52-2004-Ocean-Sportfish-08**





**52-2004-Ocean-Sportfish-09**



**52-2004-Ocean-Sportfish-10**



**52-2004-Ocean-Sportfish-11**



**52-2004-Ocean-Sportfish-12**



**52-2004-Ocean-Sportfish-13**



**52-2004-Ocean-Sportfish-14**



**52-2004-Ocean-Sportfish-15**

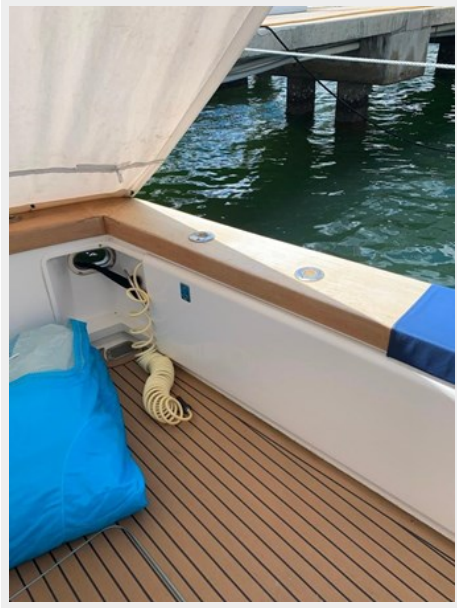


**52-2004-Ocean-Sportfish-16**

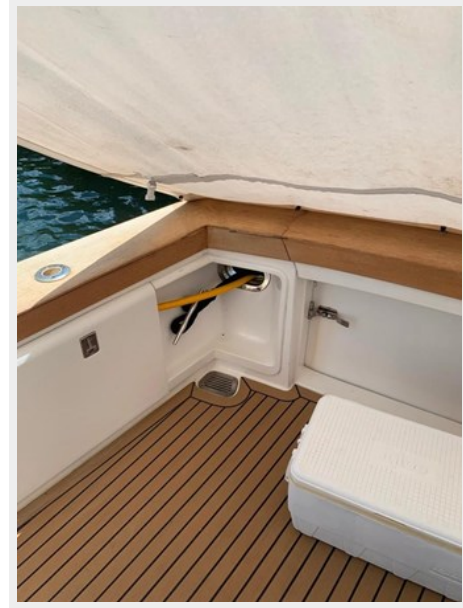




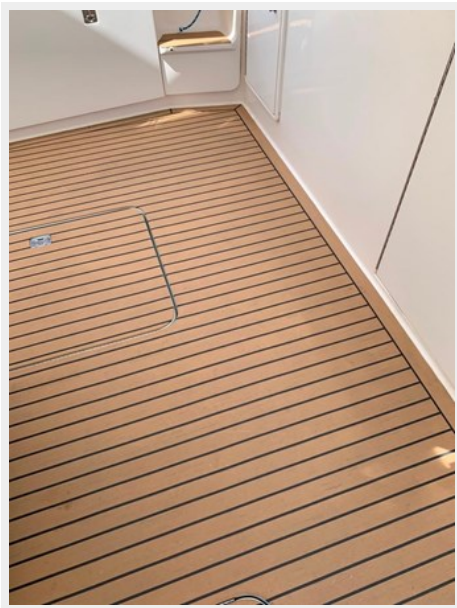
**52-2004-Ocean-Sportfish-17**



**52-2004-Ocean-Sportfish-18**



**52-2004-Ocean-Sportfish-19**



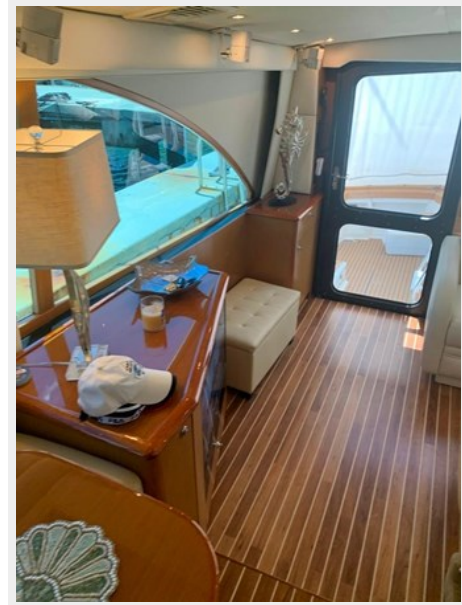
**52-2004-Ocean-Sportfish-20**



**52-2004-Ocean-Sportfish-21**



**52-2004-Ocean-Sportfish-22**



**52-2004-Ocean-Sportfish-23**



**52-2004-Ocean-Sportfish-24**





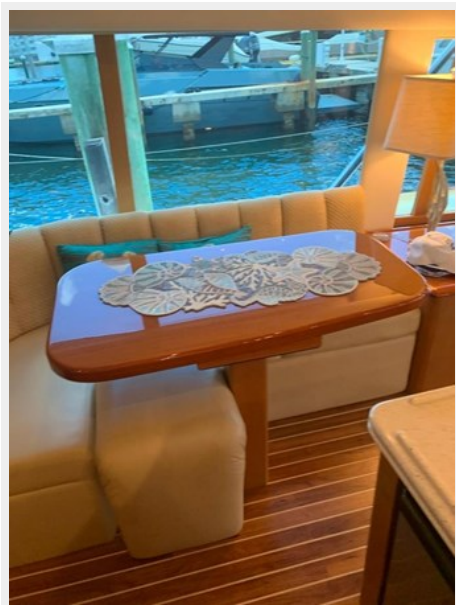
**52-2004-Ocean-Sportfish-25**



**52-2004-Ocean-Sportfish-26**



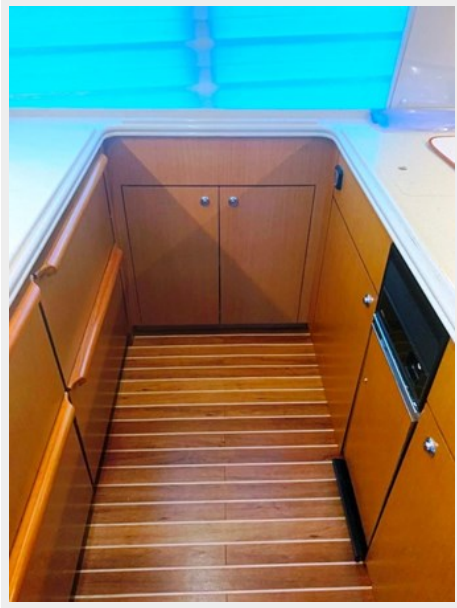
**52-2004-Ocean-Sportfish-27**



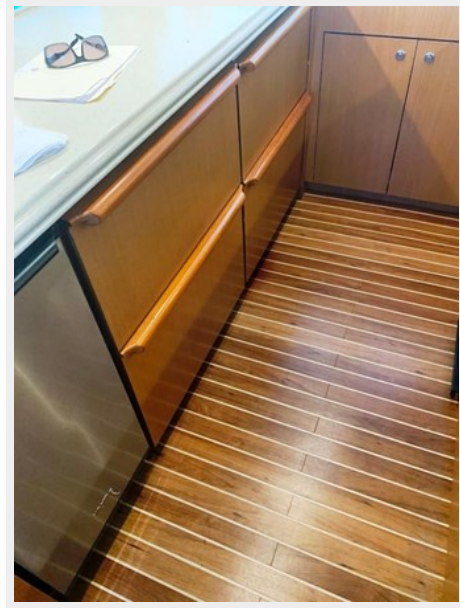
**52-2004-Ocean-Sportfish-28**



**52-2004-Ocean-Sportfish-29**



**52-2004-Ocean-Sportfish-30**



**52-2004-Ocean-Sportfish-31**



**52-2004-Ocean-Sportfish-32**





**52-2004-Ocean-Sportfish-33**



**52-2004-Ocean-Sportfish-34**



**52-2004-Ocean-Sportfish-35**



**52-2004-Ocean-Sportfish-36**



**52-2004-Ocean-Sportfish-37**



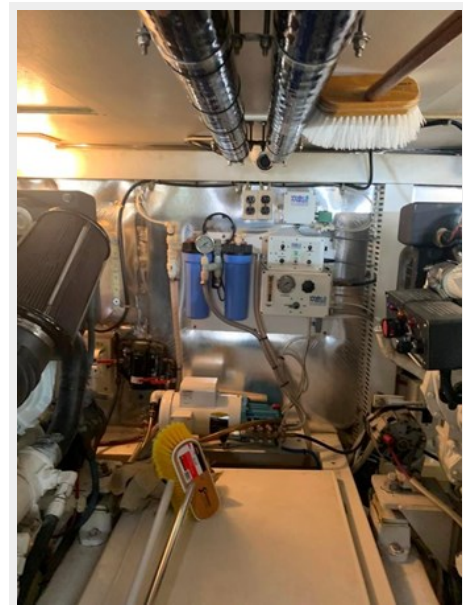
**52-2004-Ocean-Sportfish-38**



**52-2004-Ocean-Sportfish-39**



**52-2004-Ocean-Sportfish-40**





**52-2004-Ocean-Sportfish-41**



**52-2004-Ocean-Sportfish-42**



**52-2004-Ocean-Sportfish-43**



**52-2004-Ocean-Sportfish-44**



# CONTACTS

---

Andrey Shestakov, leading yacht broker of the sales department of Shestakov Yacht Sales Inc. Shestakov Yacht Sales Inc., the official representative of the Miami/Fort Lauderdale FL headquarters.

## Contact details

---

Email: **andrey@shestakovyachtsales.com**

Web: [shestakovyachtsales.com/en/](https://shestakovyachtsales.com/en/)

## Telephones

---

USA: **+1(954)274-4435**

## Office hours

---

Monday – Saturday: **9:00 - 21:00** EDT

Sunday: **closed**

## Address

---



Harbour Towne Marina, 850 NE 3rd St, STE 213, Dania, FL 33004