

LADY TAMARA — SWIFTSHIPS



Builder: SWIFTSHIPS

Year Built: 1977

Model: Motor Yacht

Price: \$850,000 USD

Location: United States

LOA: 110' (33.53m)

Beam: 21

Min Draft: 7' (2.13m)

Cruise Speed: 9 Knots Kts. (10 MPH)

Max Speed: 13 Knots Kts. (15 MPH)

Our experienced yacht broker, Andrey Shestakov, will help you choose and buy a yacht that best suits your needs **Lady Tamara — SWIFTSHIPS** from our catalogue. Presently, at Shestakov Yacht Sales Inc., we have a wide variety of yachts available on our sale's list. We also work in close contact with all the big yacht manufacturers from all over the world.

If you would like to buy a yacht **Lady Tamara — SWIFTSHIPS** or would like help answering any questions concerning purchasing, selling or chartering a yacht, please call **+1(954)274-4435**

TABLE OF CONTENTS

TABLE OF CONTENTS	2
SPECIFICATIONS	4
Overview	4
Basic Information	4
Dimensions	4
Speed, Capacities and Weight	4
Accommodations	4
Hull and Deck Information	5
Engine Information	5
PHOTOS	6
1920-Tuned-8292	6
1920-Tuned-8293	6
1920-Tuned-8376	6
1920-Tuned-8373	6
1920-Tuned-8435	6
1920-Tuned-8378	6
1920-Tuned-8490	7
1920-Tuned-8448	7
13	7
123 Tamnara	7
321 Tamara	7
Lady Tamara	7
182 Tamara	8
Tamara	8
1920-Tuned-8491	8
241 Tamara	8
1	8
1920-Tuned-8516	8

2	9
3	9
4	9
5	9
6	9
9	9
10	10
11	10
12	10
14	10
15	10
16	10
17	11
222	11
333	11
444	11
8	11
7	11
Lady Tamara	12
CONTACTS	13
Contact details	13
Telephones	13
Office hours	13
Address	13

SPECIFICATIONS

Overview

Dinner cruise, wedding, excursion boat in excellent condition. Lady Tamara is turn key as a business, or ready to be converted into your personal Motor Yacht. Additional details to follow. Located in Bermuda.

Basic Information

Category: Motor Yacht

Model Year: 1977

Year Built: 1977

Refit Type: 2016

Country: United States

Dimensions

LOA: 110' (33.53mm)

Beam: 21

Min Draft: 7' (2.13mm)

Speed, Capacities and Weight

Cruise Speed: 9 Knots Kts. (10 MPH)

Max Speed: 13 Knots Kts. (15 MPH)

Water Capacity: 600 Gallons

Fuel Capacity: 17000 Gal Gallons

Accommodations

Total Cabins: 4

Total Berths: 6

Sleeps: 8

Total Heads: 5

Crew Cabin: 8

Crew Berths: 4

Crew Heads: 1

Hull and Deck Information

Hull Material: Aluminum

Engine Information

Engines: 2

Manufacturer: Cummins

Engine Type: Inboard

PHOTOS

1920-Tuned-8292



1920-Tuned-8293



1920-Tuned-8373



1920-Tuned-8376



1920-Tuned-8378



1920-Tuned-8435



1920-Tuned-8448



1920-Tuned-8490



13



123 Tamnara



Lady Tamara



321 Tamara



182 Tamara



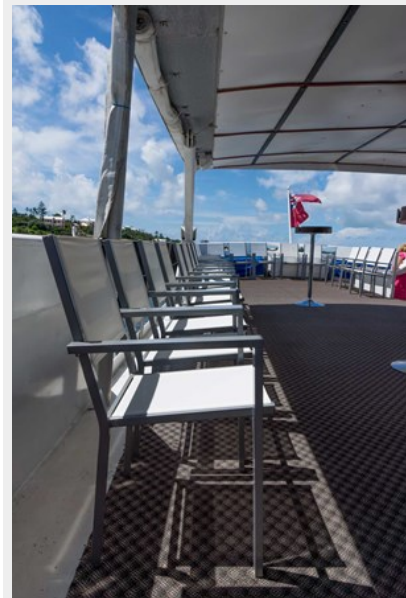
Tamara



241 Tamara



1920-Tuned-8491



1920-Tuned-8516



1



2



3



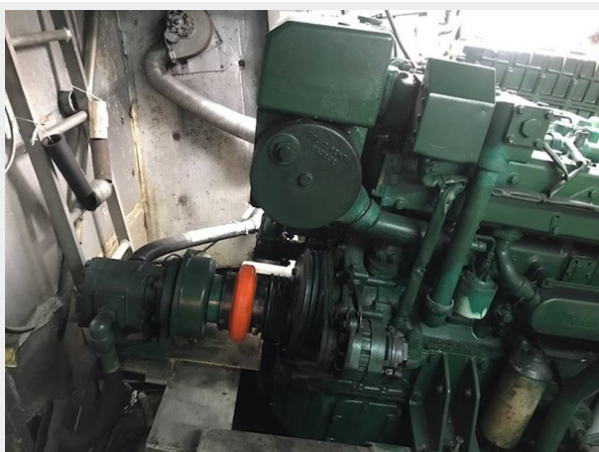
4



5



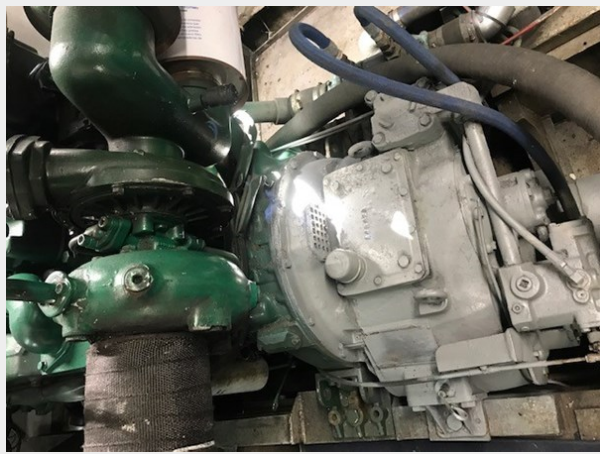
6



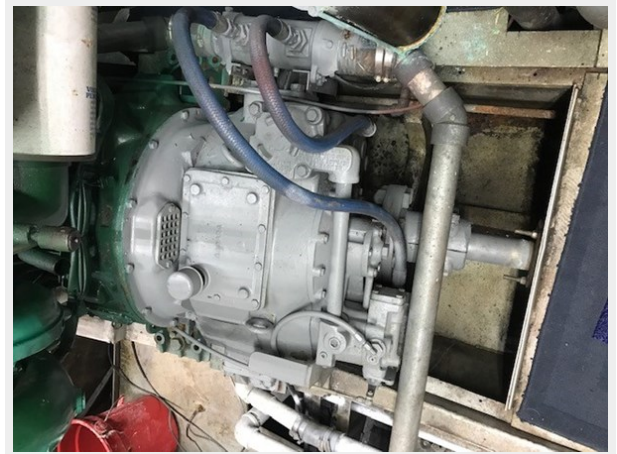
9



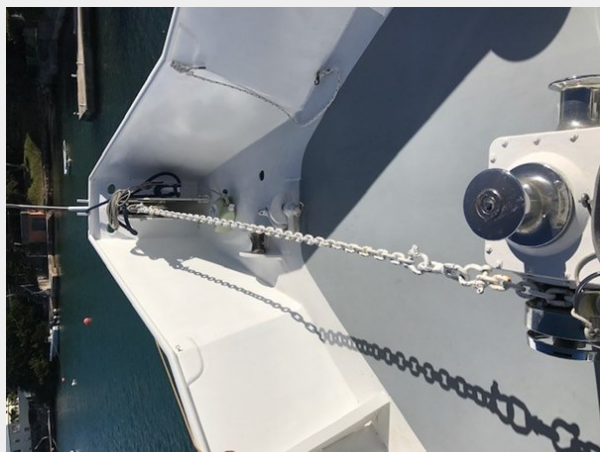
10



11



12



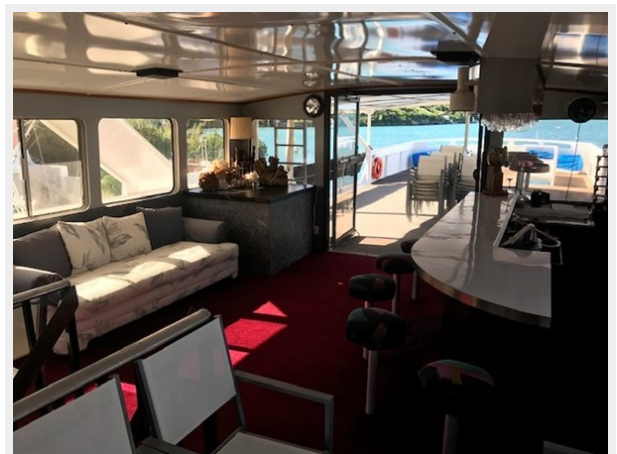
14



15



16



17



222



333



444



8



7



Lady Tamara



CONTACTS

Andrey Shestakov, leading yacht broker of the sales department of Shestakov Yacht Sales Inc. Shestakov Yacht Sales Inc., the official representative of the Miami/Fort Lauderdale FL headquarters.

Contact details

Email: andrey@shestakovyachtsales.com

Web: shestakovyachtsales.com/en/

Telephones

USA: +1(954)274-4435

Office hours

Monday – Saturday: **9:00 - 21:00** EDT

Sunday: **closed**

Address



Harbour Towne Marina, 850 NE 3rd St,
STE 213, Dania, FL 33004