

HULL #1 — RSC YACHTS



Builder: RSC YACHTS

Year Built: 2019

Model: Cruising/Racing Sailboat

Price: PRICE ON APPLICATION

Location: Netherlands

LOA: 62' 10" (19.15m)

Beam: 17.38

Min Draft: 8' 9" (2.65m)

Max Draft: 8' 9" (2.65m)

Our experienced yacht broker, Andrey Shestakov, will help you choose and buy a yacht that best suits your needs **Hull #1 — RSC YACHTS** from our catalogue. Presently, at Shestakov Yacht Sales Inc., we have a wide variety of yachts available on our sale's list. We also work in close contact with all the big yacht manufacturers from all over the world.

If you would like to buy a yacht **Hull #1 — RSC YACHTS** or would like help answering any questions concerning purchasing, selling or chartering a yacht, please call **+1(954)274-4435**

TABLE OF CONTENTS

TABLE OF CONTENTS	2
SPECIFICATIONS	4
Overview	4
Basic Information	4
Dimensions	4
Speed, Capacities and Weight	4
Accommodations	5
Hull and Deck Information	5
Engine Information	5
PHOTOS	6
2	6
3	6
4	6
5	6
6	7
7	7
8	7
9	7
10	8
11	8
12	8
13	8
15	9
14	9
17	9
16	9
18	9
19	9

21	10
22	10
23	10
CONTACTS	11
Contact details	11
Telephones	11
Office hours	11
Address	11

SPECIFICATIONS

Overview

The RSC Yachts 1900 sets a new standard for fast, easy, luxurious sailing. Kees van der Stadt's superyacht pedigree is evident throughout this seaworthy vessel that is ready to take you anywhere.

The efficient deck layout, flexible sail plan and aluminum hull will be appreciated by true sailing aficionados. And the modern handcrafted interior with wrap-around raised saloon window makes living aboard a true pleasure. The ultra high quality materials, equipment and workmanship are superyacht caliber and in stark contrast to those offered by production builders.

Now available for that one special yachtsman who desires to embrace a new level of raised saloon cruising and save over €100,000 compared with a new order.

Semi-custom yachts in this class are produced by Jeanneau, Beneteau, Dufour, CNB, Hanse, Oyster, Amel, Discovery, Swan, Solaris, Baltic, Contest, Advanced, Grand Soleil, Southerly and Moody.

Basic Information

Category: Cruising/Racing Sailboat

Model Year: 2019

Year Built: 2019

Country: Netherlands

Dimensions

LOA: 62' 10" (19.15mm)

LWL: 57' 2" (17.4mm)

LOD: 61' 5" (18.7mm)

Beam: 17.38

Min Draft: 8' 9" (2.65mm)

Max Draft: 8' 9" (2.65mm)

Speed, Capacities and Weight

Water Capacity: 1250 Gallons

Holding Tank: 79.25 Gal Gallons

Fuel Capacity: 198.13 Gal Gallons

Accommodations

Total Cabins: 4

Total Heads: 3

Hull and Deck Information

Hull Material: Aluminum

Engine Information

Engines: 1

Manufacturer: Volvo Penta

Engine Type: Inboard

Fuel Type: Diesel

PHOTOS

2



3



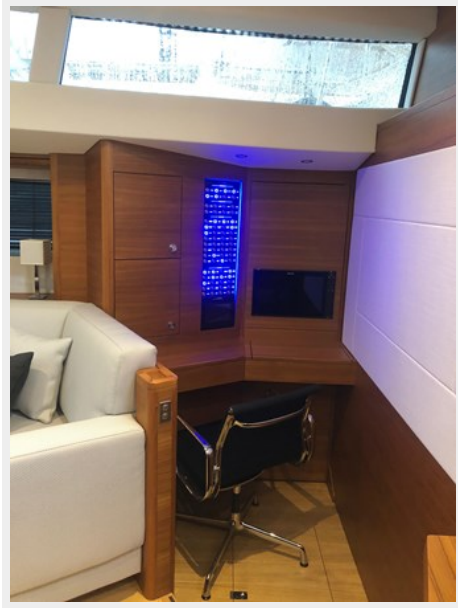
4



5



6



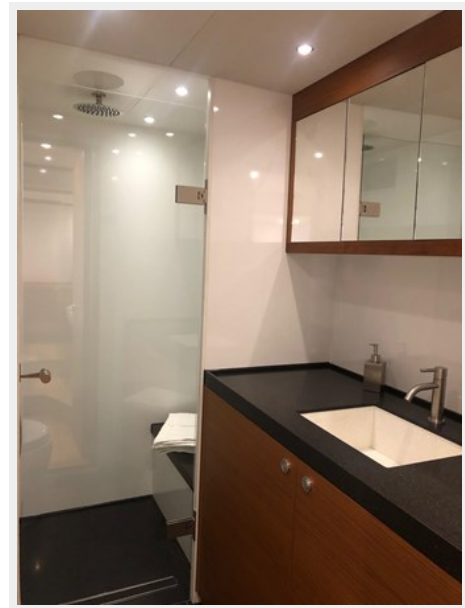
7



8



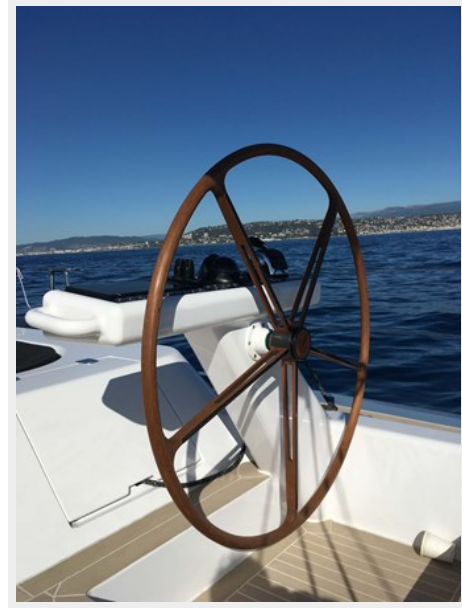
9



10



11



12



13



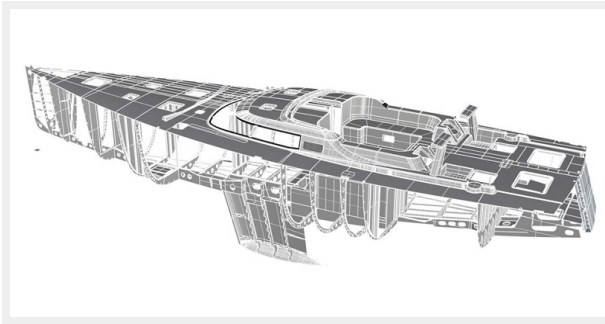
14



15



16



17



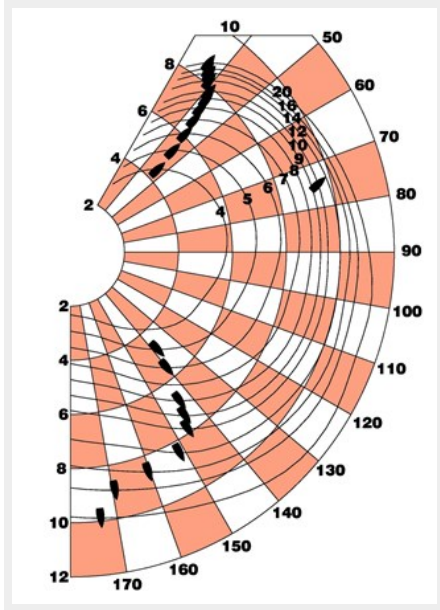
18



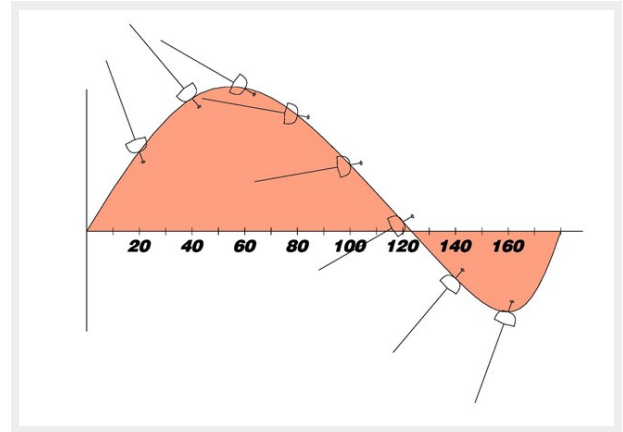
19



21



22



23



CONTACTS

Andrey Shestakov, leading yacht broker of the sales department of Shestakov Yacht Sales Inc. Shestakov Yacht Sales Inc., the official representative of the Miami/Fort Lauderdale FL headquarters.

Contact details

Email: andrey@shestakovyachtsales.com

Web: shestakovyachtsales.com/en/

Telephones

USA: +1(954)274-4435

Office hours

Monday – Saturday: **9:00 - 21:00** EDT

Sunday: **closed**

Address



Harbour Towne Marina, 850 NE 3rd St,
STE 213, Dania, FL 33004