

MERRILY — CUSTOM



Builder: CUSTOM

Year Built: 1980

Model: Center Cockpit

Price: PRICE ON APPLICATION

Location: United States

LOA: 40' (12.19mm)

Beam: 12.5

Max Draft: 6' (1.83mm)

Cruise Speed: 6.9 Knots Kts. (8 MPH)

Max Speed: 8 Knots Kts. (9 MPH)

Our experienced yacht broker, Andrey Shestakov, will help you choose and buy a yacht that best suits your needs **Merrily — CUSTOM** from our catalogue. Presently, at Shestakov Yacht Sales Inc., we have a wide variety of yachts available on our sale's list. We also work in close contact with all the big yacht manufacturers from all over the world.

If you would like to buy a yacht **Merrily — CUSTOM** or would like help answering any questions concerning purchasing, selling or chartering a yacht, please call **+1(954)274-4435**

TABLE OF CONTENTS

TABLE OF CONTENTS	2
SPECIFICATIONS	5
Overview	5
Basic Information	5
Dimensions	5
Speed, Capacities and Weight	6
Accommodations	6
Hull and Deck Information	6
Engine Information	6
PHOTOS	7
DSC05855	7
DJI_0090	7
DSC05860	7
DSC05863	7
DSC05865	8
DSC05864	8
DSC05869	8
DSC05870	8
DSC05874	8
DSC05872	8
DSC05879	9
DSC05882	9
DSC05885	9
DSC05892	9
DSC05898	10
DSC05896	10
DSC05901	10
DSC05906	10

DSC05909	10
DSC05911	10
DSC05915	11
DSC05917	11
DSC05918	11
DSC05919	11
DSC05921	11
DSC05922	11
DSC05923	12
DSC05925	12
DSC05928	12
DSC05932	12
DSC05933	13
DSC05934	13
DSC05935	13
DSC05938	13
DSC05939	14
DSC05940	14
DSC05941	14
DSC05947	14
DSC05948	15
DSC05949	15
DSC05965	15
DSC05953	15
DSC05968	16
CONTACTS	17
Contact details	17
Telephones	17
Office hours	17

Address

17

SPECIFICATIONS

Overview

Generous amount of headroom (6'-4" plus), great for taller sailors Great access to engine. Horizontal shaft placement ensures maximum efficiency. Cruising speed reached at 24hp Bluewater cruising size storage tanks for diesel, water, and holding 14 operable port lights and 3 large operable ceiling hatches allow for amazing air circulation and natural light.

Current Owner has lived aboard the vessel for three years at Shilshole Bay Marina and has shown that the vessel systems have been stress tested and improved for user convenience.

Transferable slip with Shilshole Marina liveaboard status (currently a three year waiting list) available to new Owner

Boat was built in the Frederick Amor Shipyard in British Columbia. One of her sister ships sailed the NW Passage in 2009 (see links below). This boat was originally commissioned to sail to Australia, while the original Owner ran out of time to make the journey, the boat was built to handle the voyage.

Being built for Canada weather, the vessel is very well insulated. Minimal condensation even in the most extreme of temperatures. Great advantage for living aboard.

Basic Information

Category: Center Cockpit

Sub Category: Cruising Sailboat

Model Year: 1980

Year Built: 1980

Country: United States

Dimensions

LOA: 40' (12.19mm)

Beam: 12.5

Max Draft: 6' (1.83mm)

Speed, Capacities and Weight

Cruise Speed: 6.9 Knots Kts. (8 MPH)

Max Speed: 8 Knots Kts. (9 MPH)

Water Capacity: 125 Gallons

Holding Tank: 30 Gal Gallons

Fuel Capacity: 250 Gal Gallons

Accommodations

Total Cabins: 4

Total Berths: 5

Sleeps: 7

Total Heads: 1

Hull and Deck Information

Hull Material: Fiberglass

Engine Information

Engines: 2

Manufacturer: Perkins Diesel

PHOTOS

DSC05855



DJI_0090



DSC05860



DSC05863



DSC05864



DSC05865



DSC05869



DSC05870



DSC05872



DSC05874



DSC05879



DSC05882



DSC05885



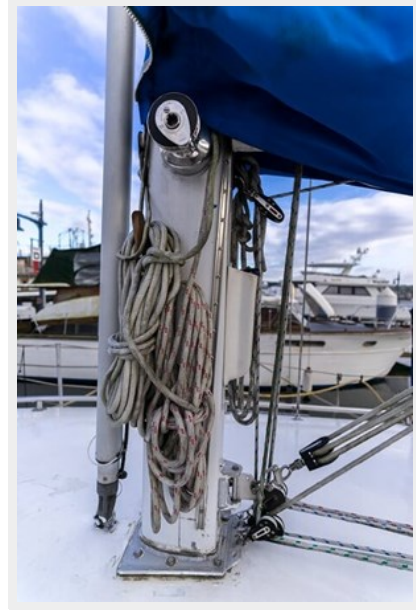
DSC05892



DSC05896



DSC05898



DSC05901



DSC05906



DSC05909



DSC05911



DSC05915



DSC05917



DSC05918



DSC05919



DSC05921



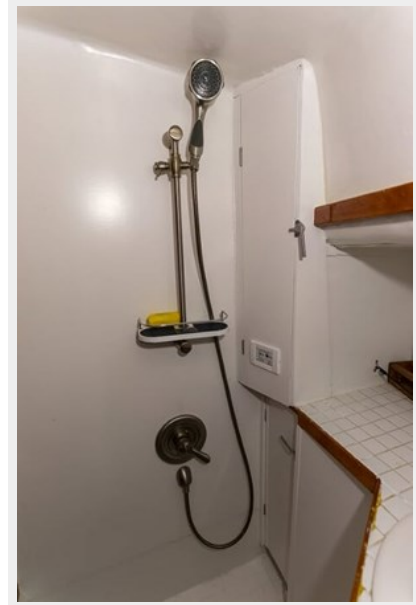
DSC05922



DSC05923



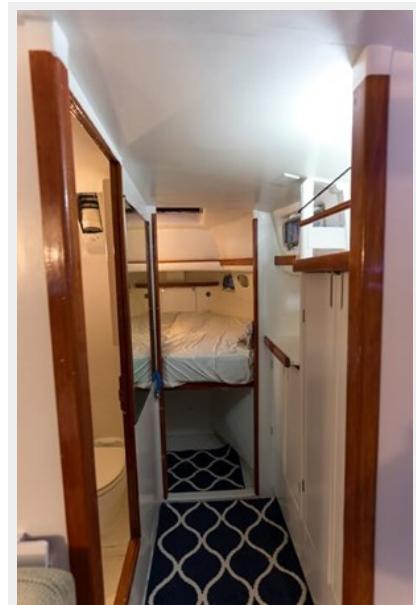
DSC05925



DSC05928



DSC05932



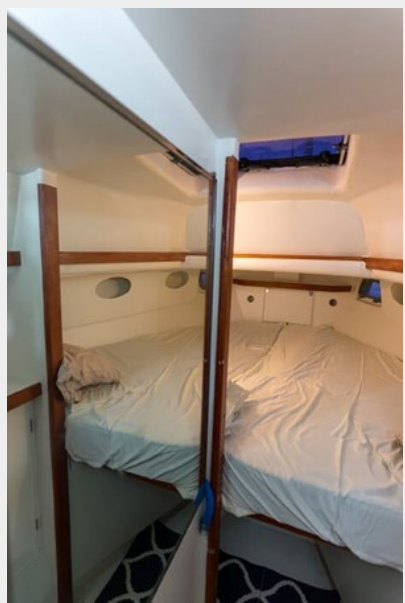
DSC05933



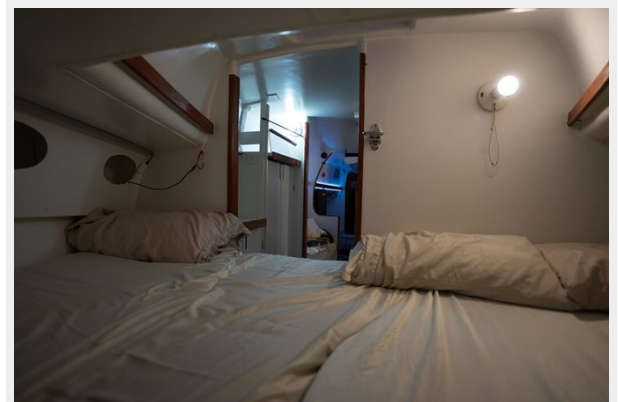
DSC05934



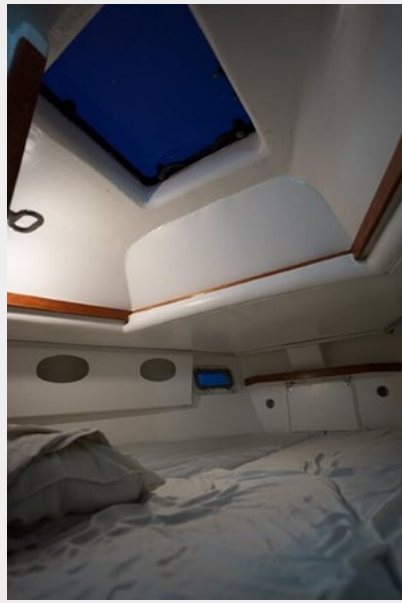
DSC05935



DSC05938



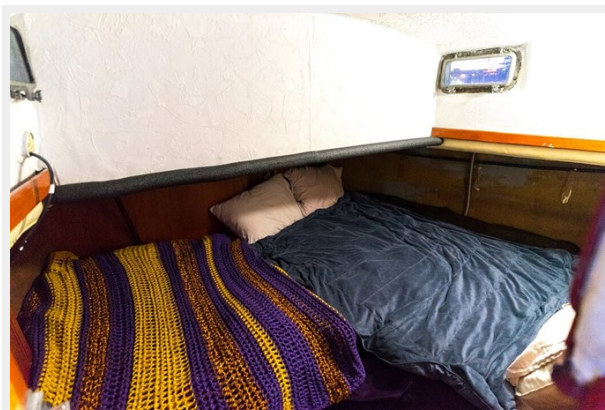
DSC05939



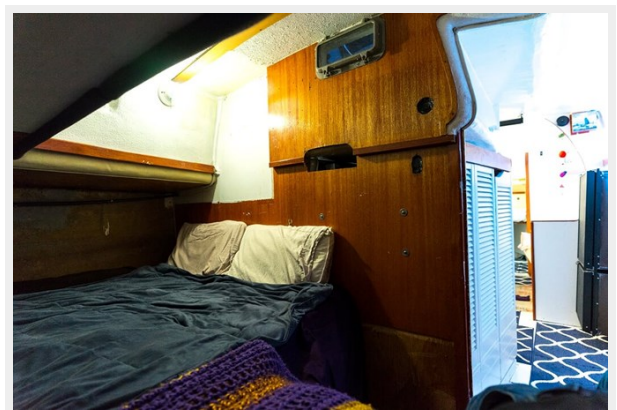
DSC05940



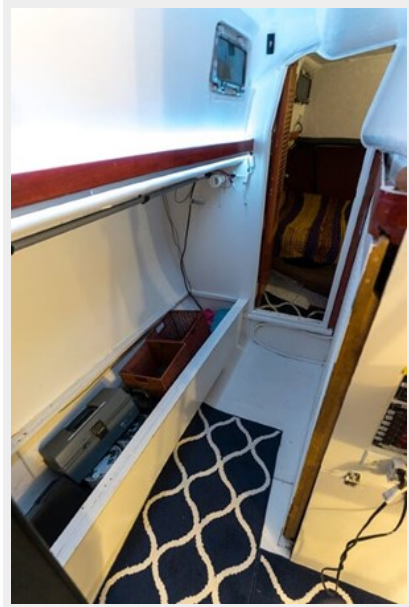
DSC05941



DSC05947



DSC05948



DSC05949



DSC05965



DSC05953



DSC05968



CONTACTS

Andrey Shestakov, leading yacht broker of the sales department of Shestakov Yacht Sales Inc. Shestakov Yacht Sales Inc., the official representative of the Miami/Fort Lauderdale FL headquarters.

Contact details

Email: andrey@shestakovyachtsales.com

Web: shestakovyachtsales.com/en/

Telephones

USA: +1(954)274-4435

Office hours

Monday – Saturday: **9:00 - 21:00** EDT

Sunday: **closed**

Address



Harbour Towne Marina, 850 NE 3rd St,
STE 213, Dania, FL 33004