

## SOARING — ABEKING & RASMUSSEN



**Builder:** ABEKING & RASMUSSEN

**Year Built:** 2020

**Model:** Motor Yacht

**Price:** PRICE ON APPLICATION

**Location:** United States

**LOA:** 223' 10" (68.2mm)

**Beam:** 38.05

**Min Draft:** 10' 10" (3.3mm)

**Max Draft:** 11' 4" (3.45mm)

**Cruise Speed:** 14 Knots Kts. (16 MPH)

**Max Speed:** 16.2 Knots Kts. (19 MPH)

Our experienced yacht broker, Andrey Shestakov, will help you choose and buy a yacht that best suits your needs **SOARING — ABEKING & RASMUSSEN** from our catalogue. Presently, at Shestakov Yacht Sales Inc., we have a wide variety of yachts available on our sale's list. We also work in close contact with all the big yacht manufacturers from all over the world.

If you would like to buy a yacht **SOARING — ABEKING & RASMUSSEN** or would like help answering any questions concerning purchasing, selling or chartering a yacht, please call **+1(954)274-4435**

---

# TABLE OF CONTENTS

---

TABLE OF CONTENTS	2
SPECIFICATIONS	4
Basic Information	4
Dimensions	4
Speed, Capacities and Weight	4
Accommodations	4
Hull and Deck Information	5
Engine Information	5
PHOTOS	6
14612.0	6
14612.1	6
14612.2	6
14612.3	6
14612.5	6
14612.4	6
14612.7	7
14612.6	7
14612.8	7
14612.9	7
14612.11	7
14612.10	7
14612.13	8
14612.12	8
14612.14	8
14612.15	8
14612.16	8
14612.17	8
14612.18	9

---

14612.19	9
14612.20	9
CONTACTS	10
Contact details	10
Telephones	10
Office hours	10
Address	10

---

# SPECIFICATIONS

---

## Basic Information

---

**Category:** Motor Yacht

**Sub Category:** Mega Yacht

**Model Year:** 2020

**Year Built:** 2020

**Country:** United States

## Dimensions

---

**LOA:** 223' 10" (68.2mm)

**LWL:** 200' 10" (61.2mm)

**Beam:** 38.05

**Min Draft:** 10' 10" (3.3mm)

**Max Draft:** 11' 4" (3.45mm)

## Speed, Capacities and Weight

---

**Cruise Speed:** 14 Knots Kts. (16 MPH)

**Cruise Speed Range:** 4500

**Max Speed:** 16.2 Knots Kts. (19 MPH)

**Gross Tonnage:** 1541 Pounds

**Water Capacity:** 300000 Gallons

**Fuel Capacity:** 39625.81 Gal Gallons

**Fuel Consumption:** 145.29 Gal Gallons

## Accommodations

---

**Total Cabins:** 6

**Sleeps:** 12

**Crew Cabin:** 17

---

## Hull and Deck Information

---

**Hull Material:** Steel

**Deck Material:** Teak

**Hull Configuration:** Full Displacement

**Hull Color:** Grey

**Exterior Designer:** Focus Yacht Design

**Interior Designer:** Focus Yacht Design

---

## Engine Information

---

**Engines:** 2

**Manufacturer:** MTU

# PHOTOS

14612.0



14612.1



14612.2



14612.3



14612.4



14612.5



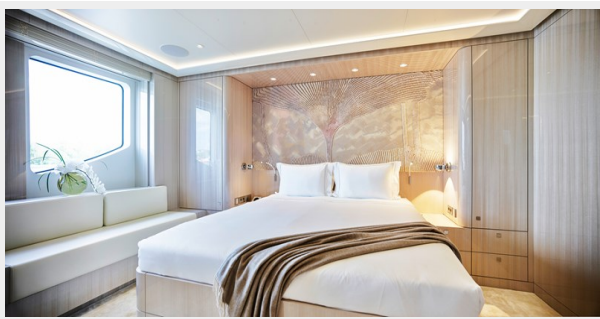
14612.6



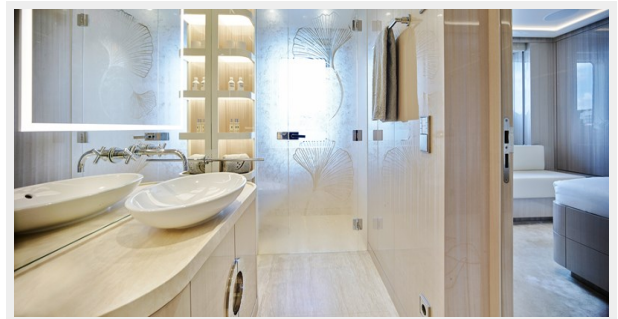
14612.7



14612.8



14612.9



14612.10



14612.11



14612.12



14612.13



14612.14



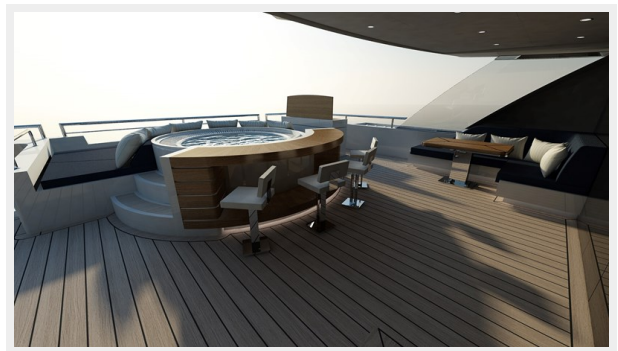
14612.15



14612.16

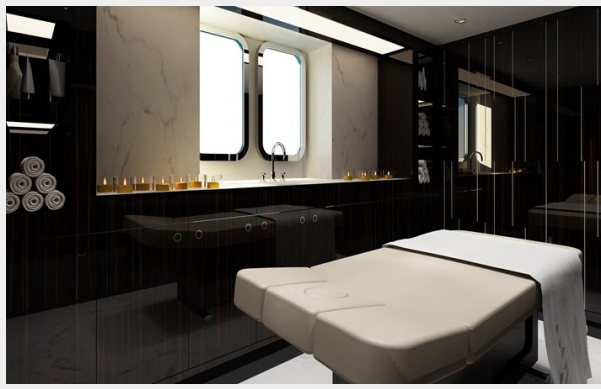


14612.17

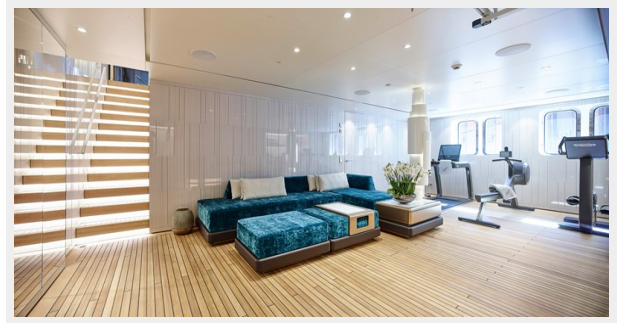




14612.18



14612.19



14612.20



# CONTACTS

---

Andrey Shestakov, leading yacht broker of the sales department of Shestakov Yacht Sales Inc. Shestakov Yacht Sales Inc., the official representative of the Miami/Fort Lauderdale FL headquarters.

## Contact details

---

Email: [andrey@shestakovyachtsales.com](mailto:andrey@shestakovyachtsales.com)

Web: [shestakovyachtsales.com/en/](http://shestakovyachtsales.com/en/)

## Telephones

---

USA: +1(954)274-4435

## Office hours

---

Monday – Saturday: **9:00 - 21:00** EDT

Sunday: **closed**

## Address

---



Harbour Towne Marina, 850 NE 3rd St,  
STE 213, Dania, FL 33004