

PIECE OF SHIP — SUNSEEKER



Builder: SUNSEEKER

Year Built: 2017

Model: cruiser

Price: \$1,765,000 USD

Location: United States

LOA: 68' (20.73mm)

Beam: 16.75

Max Draft: 5' 2" (1.57mm)

Cruise Speed: 24 Knots Kts. (28 MPH)

Max Speed: 33 Knots Kts. (38 MPH)

Our experienced yacht broker, Andrey Shestakov, will help you choose and buy a yacht that best suits your needs **Piece Of Ship — SUNSEEKER** from our catalogue. Presently, at Shestakov Yacht Sales Inc., we have a wide variety of yachts available on our sale's list. We also work in close contact with all the big yacht manufacturers from all over the world.

If you would like to buy a yacht **Piece Of Ship — SUNSEEKER** or would like help answering any questions concerning purchasing, selling or chartering a yacht, please call **+1(954)274-4435**

TABLE OF CONTENTS

TABLE OF CONTENTS	2
SPECIFICATIONS	4
Overview	4
Basic Information	4
Dimensions	4
Speed, Capacities and Weight	4
Accommodations	4
Hull and Deck Information	4
Engine Information	5
PHOTOS	6
2_IMG_3995	6
3_IMG_3994	6
4_IMG_3982	6
5_IMG_3983	6
6_IMG_3984	7
7_IMG_3981	7
8_IMG_3979	7
9_IMG_3977	7
10_IMG_3973	7
11_IMG_3976	7
12_IMG_3980	8
13_IMG_3974	8
15_IMG_3958	8
14_IMG_3957	8
16_IMG_3970	9
17_IMG_3971	9
18_IMG_3960	9
19_IMG_3959	9

20_IMG_3967	10
21_IMG_3966	10
22_IMG_3968	10
23_IMG_3961	10
24_IMG_3963	10
25_IMG_3964	10
26_IMG_3965	11
27_IMG_3962	11
28_IMG_3954	11
29_IMG_3949	11
30_IMG_3953	12
31_IMG_3951	12
32_IMG_3955	12
33_IMG_3985	12
34_IMG_3986	13
35_IMG_3987	13
36_IMG_3988	13
37_IMG_3989	13
38_IMG_3990	13
39_IMG_3991	13
40_IMG_3992	14
41_IMG_3993	14
CONTACTS	15
Contact details	15
Telephones	15
Office hours	15
Address	15

SPECIFICATIONS

Overview

3 Cabin, 3 Head plus crew, Lower Galley Layout. Beautiful interior with Satin Finish Black American Walnut wood throughout, upgraded Weston Hammer Natural Weave carpeting and Dark Walnut Venetian Blinds. Upgraded Navigation system.

Basic Information

Category: cruiser

Model Year: 2017

Year Built: 2017

Country: United States

Dimensions

LOA: 68' (20.73mm)

LWL: 53' 10" (16.41mm)

Beam: 16.75

Max Draft: 5' 2" (1.57mm)

Speed, Capacities and Weight

Cruise Speed: 24 Knots Kts. (28 MPH)

Max Speed: 33 Knots Kts. (38 MPH)

Water Capacity: 211 Gallons

Fuel Capacity: 925 Gal Gallons

Accommodations

Total Cabins: 3

Total Heads: 3

Hull and Deck Information

Hull Material: Fiberglass

Engine Information

Engines: 2

Manufacturer: MAN

Engine Type: Inboard

Fuel Type: Diesel

PHOTOS

2_IMG_3995



3_IMG_3994



4_IMG_3982



5_IMG_3983



6_IMG_3984



7_IMG_3981



8_IMG_3979



9_IMG_3977



10_IMG_3973



11_IMG_3976



12_IMG_3980



13_IMG_3974



14_IMG_3957



15_IMG_3958



16_IMG_3970



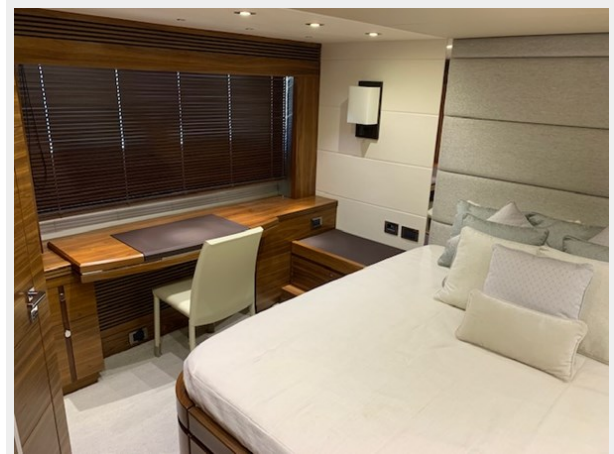
17_IMG_3971



18_IMG_3960



19_IMG_3959



20_IMG_3967



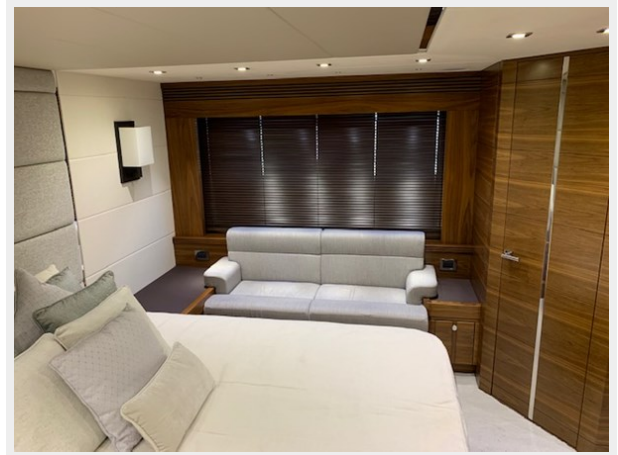
21_IMG_3966



22_IMG_3968



23_IMG_3961



24_IMG_3963



25_IMG_3964



26_IMG_3965



27_IMG_3962



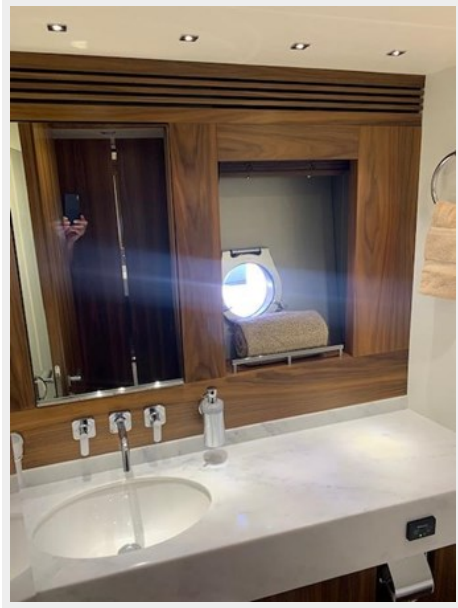
28_IMG_3954



29_IMG_3949



30_IMG_3953



31_IMG_3951



32_IMG_3955



33_IMG_3985



34_IMG_3986



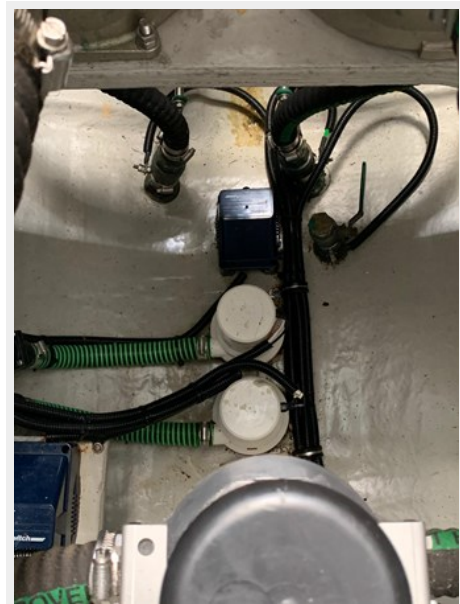
35_IMG_3987



36_IMG_3988



37_IMG_3989



38_IMG_3990



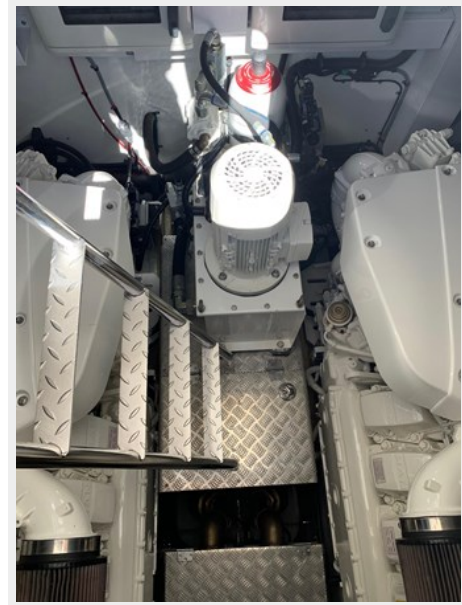
39_IMG_3991



40_IMG_3992



41_IMG_3993



CONTACTS

Andrey Shestakov, leading yacht broker of the sales department of Shestakov Yacht Sales Inc. Shestakov Yacht Sales Inc., the official representative of the Miami/Fort Lauderdale FL headquarters.

Contact details

Email: andrey@shestakovyachtsales.com

Web: shestakovyachtsales.com/en/

Telephones

USA: +1(954)274-4435

Office hours

Monday – Saturday: **9:00 - 21:00** EDT

Sunday: **closed**

Address



Harbour Towne Marina, 850 NE 3rd St,
STE 213, Dania, FL 33004