

LADY ROMAYNE — TRANSWORLD YACHTS



Builder: TRANSWORLD YACHTS

Year Built: 1988

Model: Trawler Yacht

Price: PRICE ON APPLICATION

Location: United States

LOA: 50' (15.24mm)

Beam: 15.25

Max Draft: 4' 3" (1.3mm)

Cruise Speed: 8 Knots Kts. (9 MPH)

Max Speed: 10 Knots Kts. (12 MPH)

Our experienced yacht broker, Andrey Shestakov, will help you choose and buy a yacht that best suits your needs **Lady Romaine — TRANSWORLD YACHTS** from **our catalogue**. Presently, at **Shestakov Yacht Sales Inc.**, we have a wide variety of yachts available on **our sale's list**. We also work in close contact with all the big **yacht manufacturers** from all over the world.

If you would like to buy a yacht **Lady Romaine — TRANSWORLD YACHTS** or would like help answering any questions concerning purchasing, selling or chartering a yacht, please call **+1(954)274-4435**

TABLE OF CONTENTS

TABLE OF CONTENTS	2
SPECIFICATIONS	5
Overview	5
Basic Information	5
Dimensions	5
Speed, Capacities and Weight	5
Accommodations	5
Hull and Deck Information	6
Engine Information	6
PHOTOS	7
2	7
3	7
4	7
5	7
6	7
7	7
8	8
9	8
10	8
11	8
12	8
13	8
14	8
15	8
16	9
17	9
18	9
19	9

20	9
21	9
22	9
23	9
24	10
25	10
26	10
27	10
29	10
28	10
30	11
31	11
32	11
33	11
34	11
35	11
37	12
36	12
38	12
39	12
40	12
41	12
42	13
43	13
45	13
44	13
47	14
46	14
48	14

49	14
50	14
51	14
52	15
53	15
54	15
55	15
56	15
57	15
58	16
59	16
60	16
61	16
62	16
63	16
64	17
65	17
66	17
67	17
68	17
69	17
70	18
CONTACTS	19
Contact details	19
Telephones	19
Office hours	19
Address	19

SPECIFICATIONS

Overview

"Lady Romaine" is a classic Pilothouse displacement trawler. She has a vintage style and grace that is efficient and comfortable for cruising. Unique to most displacement trawlers. her keel is ballasted, making her more stable in adverse sea conditions.

Basic Information

Category: Trawler Yacht

Model Year: 1988

Year Built: 1988

Country: United States

Dimensions

LOA: 50' (15.24mm)

LWL: 40' (12.19mm)

Beam: 15.25

Max Draft: 4' 3" (1.3mm)

Speed, Capacities and Weight

Cruise Speed: 8 Knots Kts. (9 MPH)

Max Speed: 10 Knots Kts. (12 MPH)

Water Capacity: 220 Gallons

Holding Tank: 30 Gal Gallons

Fuel Capacity: 460 Gal Gallons

Accommodations

Total Cabins: 2

Total Heads: 2

Hull and Deck Information

Hull Material: Fiberglass

Engine Information

Engines: 1

Manufacturer: Perkins

Engine Type: Inboard

Fuel Type: Diesel

PHOTOS

2



3



4



5



6



7



8



9



10



11



12



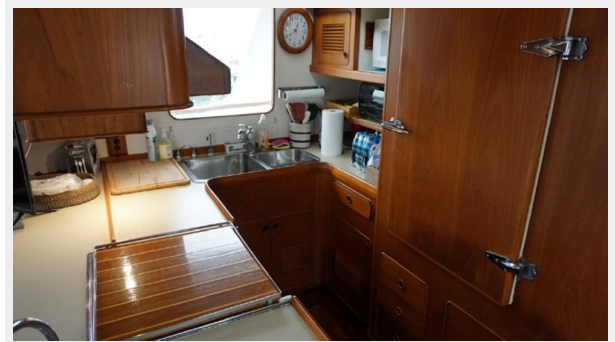
13



14



15



16



17



18



19



20



21



22



23



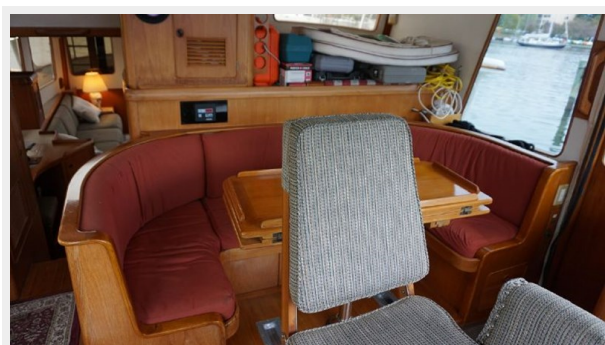
24



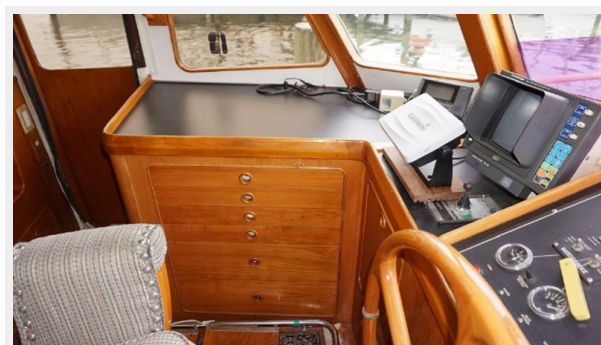
25



26



27



28



29



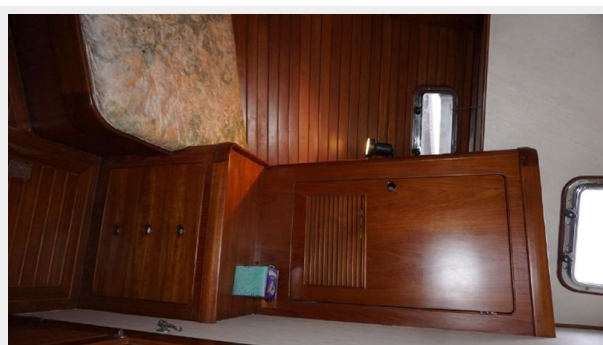
30



31



32



33



34



35



36



37



38



39



40



41



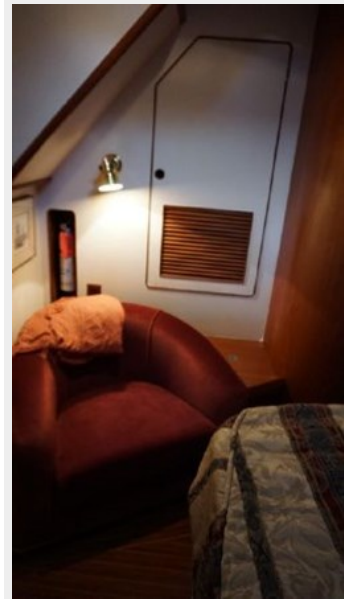
42



43



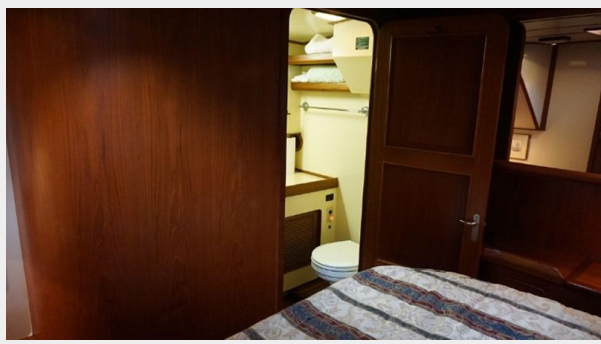
45



44



46



47



48



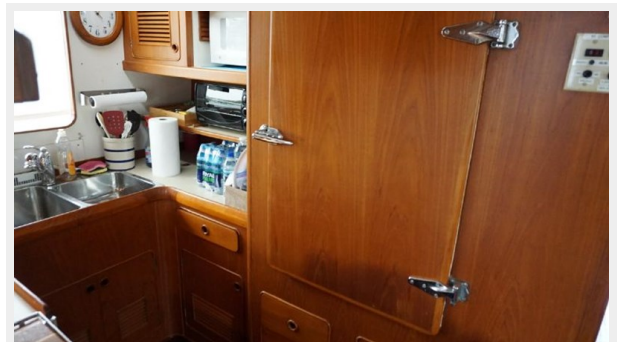
49



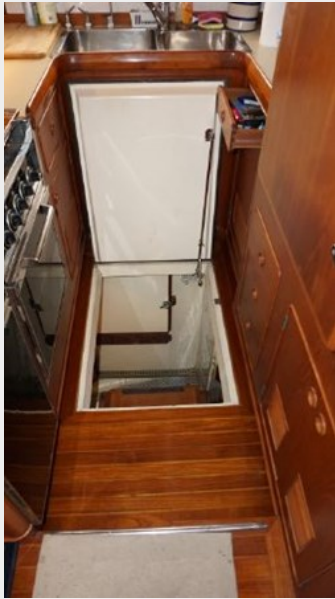
50



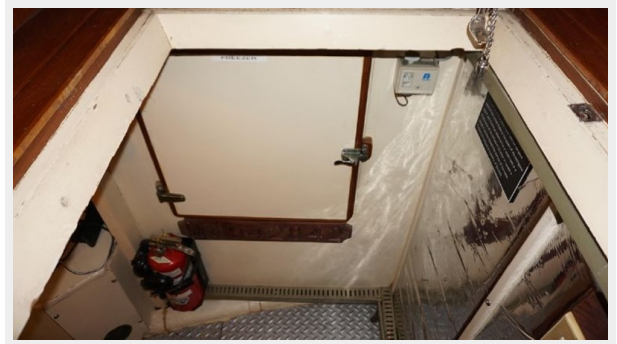
51



52



53



54



55



56



57



58



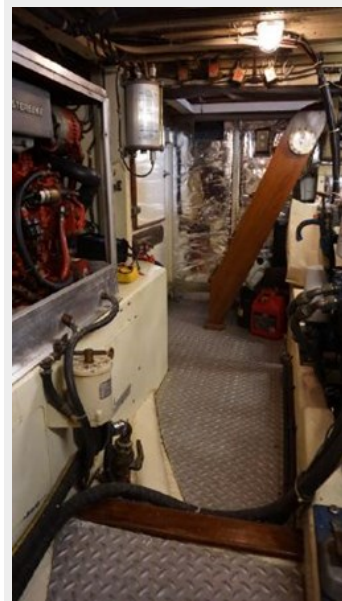
59



60



61



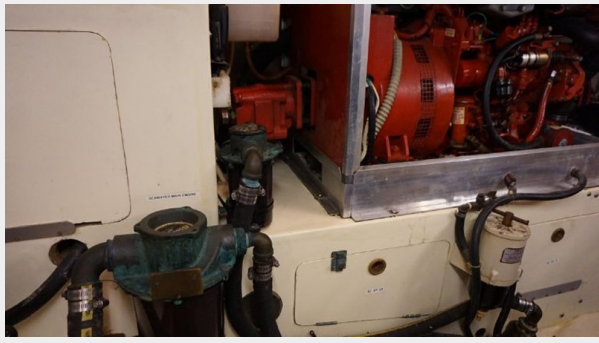
62



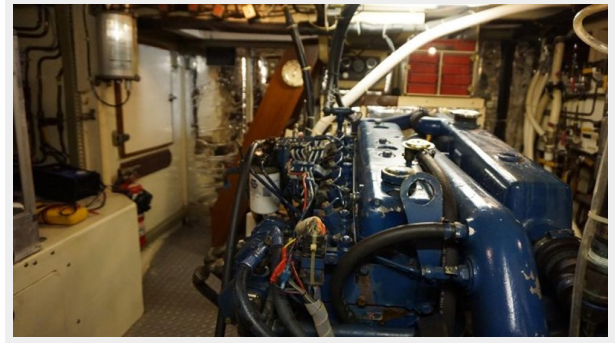
63



64



65



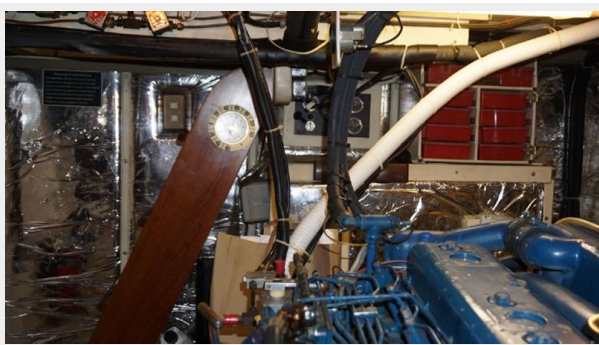
66



67



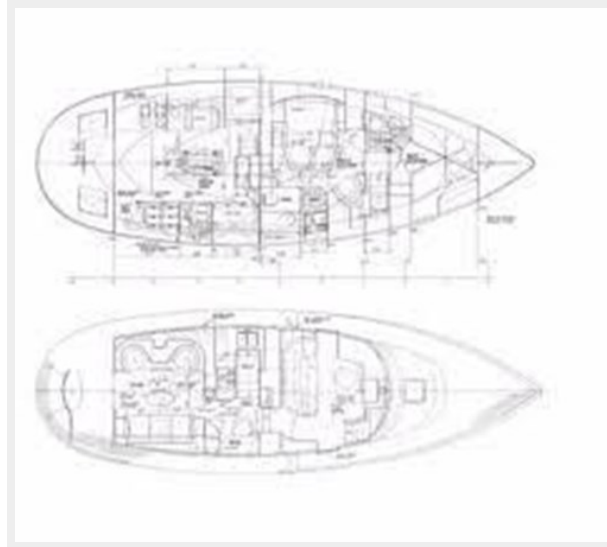
68



69



70



CONTACTS

Andrey Shestakov, leading yacht broker of the sales department of Shestakov Yacht Sales Inc. Shestakov Yacht Sales Inc., the official representative of the Miami/Fort Lauderdale FL headquarters.

Contact details

Email: **andrey@shestakovyachtsales.com**

Web: shestakovyachtsales.com/en/

Telephones

USA: **+1(954)274-4435**

Office hours

Monday – Saturday: **9:00 - 21:00** EDT

Sunday: **closed**

Address



Harbour Towne Marina, 850 NE 3rd St, STE 213, Dania, FL 33004