

## MADNESS — BILGIN YACHTS



**Builder:** BILGIN YACHTS

**Year Built:** 2010

**Model:** Motor Yacht

**Price:** PRICE ON APPLICATION

**LOA:** 110' 6" (33.68m)

**Beam:** 22.91

**Cruise Speed:** 12 Knots Kts. (14 MPH)

**Max Speed:** 19 Knots Kts. (22 MPH)

Our experienced yacht broker, Andrey Shestakov, will help you choose and buy a yacht that best suits your needs **MADNESS — BILGIN YACHTS** from our catalogue. Presently, at Shestakov Yacht Sales Inc., we have a wide variety of yachts available on our sale's list. We also work in close contact with all the big yacht manufacturers from all over the world.

If you would like to buy a yacht **MADNESS — BILGIN YACHTS** or would like help answering any questions concerning purchasing, selling or chartering a yacht, please call **+1(954)274-4435**

# TABLE OF CONTENTS

TABLE OF CONTENTS	2
SPECIFICATIONS	4
Overview	4
Basic Information	4
Dimensions	4
Speed, Capacities and Weight	4
Accommodations	5
Hull and Deck Information	5
Engine Information	5
PHOTOS	6
1	6
4	6
2	6
5	6
6	6
8	7
7	7
21	7
9	7
20	7
22	7
11	8
10	8
16	8
12	8
13	8
19	8
17	9

---

15	9
image2	9
PHOTO-2020-01-27-10-46-41	9
14	9
18	9
23	10
CONTACTS	11
Contact details	11
Telephones	11
Office hours	11
Address	11

---

---

# SPECIFICATIONS

---

## Overview

---

Bilgin Yachts in 2010, MADNESS is a RINA classed and commercially registered motor yacht.

She has been meticulously maintained by the same crew since her build and is seriously for sale

RINA classed, a quality charter yacht

Turnkey condition

Low engine hours

In addition, she accommodates 10 guests in a Master Suite, two VIP and two twin Cabins, and has a large flybridge with a Sunroof, Spa Pool, bar, fridge, Dining Table and Sun Loungers.

## Basic Information

---

**Category:** Motor Yacht

**Sub Category:** Flybridge

**Model Year:** 2010

**Year Built:** 2010

## Dimensions

---

**LOA:** 110' 6" (33.68mm)

**Beam:** 22.91

## Speed, Capacities and Weight

---

**Cruise Speed:** 12 Knots Kts. (14 MPH)

**Max Speed:** 19 Knots Kts. (22 MPH)

**Gross Tonnage:** 163 Pounds

**Water Capacity:** 2400 Gallons

**Fuel Capacity:** 3566.32 Gal Gallons

**Fuel Consumption:** 58.12 Gal Gallons

---

## Accommodations

---

**Total Cabins:** 5

**Sleeps:** 10

**Crew Cabin:** 4

---

## Hull and Deck Information

---

**Hull Material:** Wood Epoxy

**Hull Configuration:** Monohull

---

## Engine Information

---

**Engines:** 2

**Manufacturer:** MTU

**Engine Type:** Inboard

**Fuel Type:** Diesel

# PHOTOS

1



2



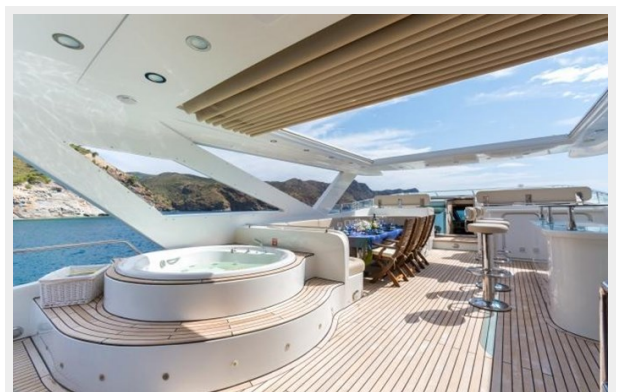
4



5



6





7



8



9



21



22



20



10



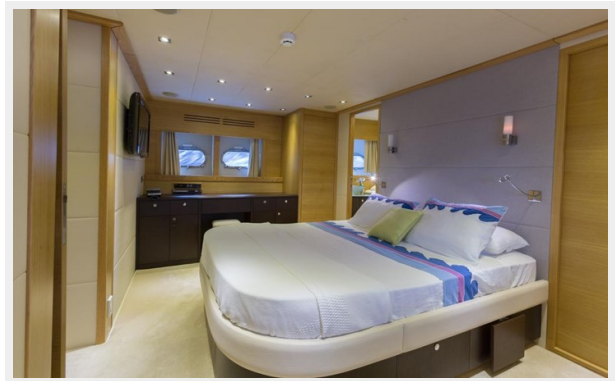
11



12



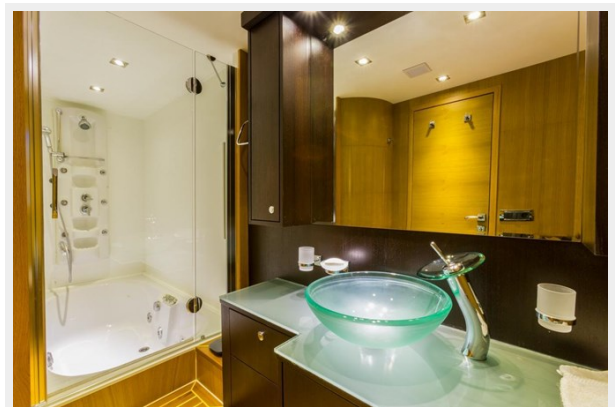
16



13



19





15

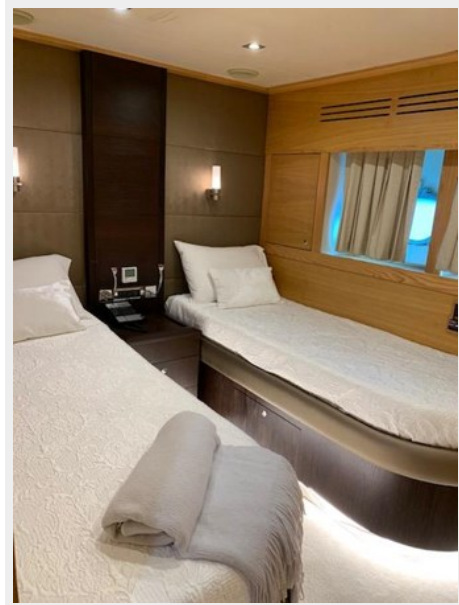
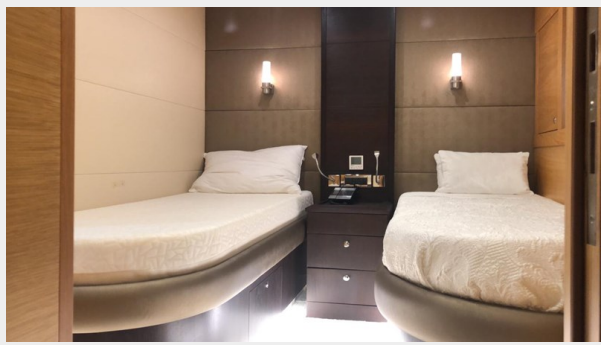


17



image2

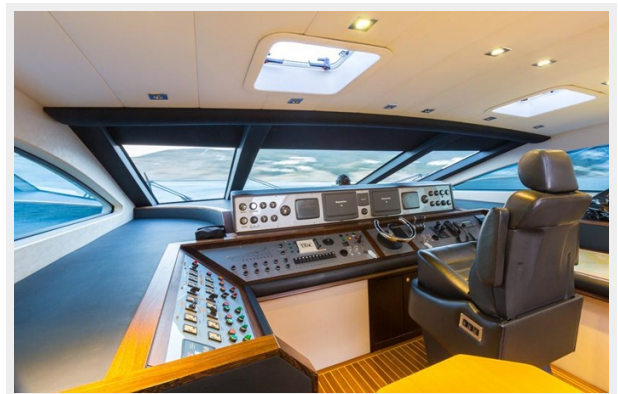
PHOTO-2020-01-27-10-46-41



14



18



23



# CONTACTS

---

Andrey Shestakov, leading yacht broker of the sales department of Shestakov Yacht Sales Inc. Shestakov Yacht Sales Inc., the official representative of the Miami/Fort Lauderdale FL headquarters.

## Contact details

---

Email: [andrey@shestakovyachtsales.com](mailto:andrey@shestakovyachtsales.com)

Web: [shestakovyachtsales.com/en/](http://shestakovyachtsales.com/en/)

## Telephones

---

USA: +1(954)274-4435

## Office hours

---

Monday – Saturday: **9:00 - 21:00** EDT

Sunday: **closed**

## Address

---



Harbour Towne Marina, 850 NE 3rd St,  
STE 213, Dania, FL 33004