

BLUE HEAVEN — SEA RAY



Builder: SEA RAY

Year Built: 2004

Model: cruiser

Price: \$335,000 USD

Location: United States

LOA: 53' 4" (16.26mm)

Beam: 15.25

Max Draft: 4' 4" (1.32mm)

Our experienced yacht broker, Andrey Shestakov, will help you choose and buy a yacht that best suits your needs **BLUE HEAVEN — SEA RAY** from our catalogue. Presently, at Shestakov Yacht Sales Inc., we have a wide variety of yachts available on our sale's list. We also work in close contact with all the big yacht manufacturers from all over the world.

If you would like to buy a yacht **BLUE HEAVEN — SEA RAY** or would like help answering any questions concerning purchasing, selling or chartering a yacht, please call **+1(954)274-4435**

TABLE OF CONTENTS

TABLE OF CONTENTS	2
SPECIFICATIONS	5
Overview	5
Basic Information	5
Dimensions	5
Speed, Capacities and Weight	6
Accommodations	6
Hull and Deck Information	6
Engine Information	6
PHOTOS	7
1	7
port profile	7
stb on water	7
stb overhead running	7
bow sunpad back	7
cockpit forward port	7
IMG_3131	8
cockpit aft	8
IMG_3133	8
IMG_3132	8
IMG_3134	8
IMG_3136	8
IMG_3137	9
IMG_3138	9
IMG_3172	9
IMG_3171	9
Helm 2	9
IMG_3166	9

IMG_3144	10
saloon from steps	10
IMG_3143	10
IMG_0073	10
IMG_0070	10
IMG_3145	10
IMG_3140	11
IMG_3148	11
IMG_0072	11
IMG_3154	11
IMG_3153	11
IMG_3150	11
IMG_3151	12
IMG_3155	12
IMG_3156	12
IMG_3157	12
IMG_3158	12
Generator 2	12
gen hrs	13
IMG_3161	13
IMG_3163	13
IMG_3164	13
IMG_3165	13
port hardtop	13
CONTACTS	14
Contact details	14
Telephones	14
Office hours	14
Address	14

SPECIFICATIONS

Overview

2005 Sea Ray 500 Sundancer Twin Cummins MerCruiser 660Hp V-Drives

The Sea Ray 500 Sundancer *Blue Heaven* is as close to "BRISTOL" as you can get.

Features recent upgrades, include:

- Garmin Radar/Chartplotter
- Cabin Carpeting
- Salon AC unit
- Stereo speakers, subwoofer, and amplifier
- Captains chair
- Sea Ray monitoring system
- Bow thruster batteries and charger
- LED Flatscreen TV - 3
- Direct TV Receivers and Antenna

Blue Heaven is equipped with *engine room heaters* for those who want to cruise north of the frost line. A swim platform dingy roller system with electric winch is removable for a clear platform. There's a lot to like on Sea Ray's 500 Sundancer. *Blue Heaven* is located in south Florida and shown by appointment.

Basic Information

Category: cruiser

Sub Category: Express

Model Year: 2005

Year Built: 2004

Country: United States

Dimensions

LOA: 53' 4" (16.26mm)

Beam: 15.25

Max Draft: 4' 4" (1.32mm)

Speed, Capacities and Weight

Water Capacity: 150 Gallons

Holding Tank: 68 Gal Gallons

Fuel Capacity: 560 Gal Gallons

Accommodations

Total Cabins: 2

Hull and Deck Information

Hull Material: Fiberglass

Engine Information

Engines: 2

Manufacturer: Cummins

Engine Type: Inboard

Fuel Type: Diesel

PHOTOS

1



port profile



stb on water



stb overhead running



bow sunpad back



cockpit forward port



cockpit aft



IMG_3131



IMG_3133



IMG_3132



IMG_3134



IMG_3136



IMG_3137



IMG_3138



IMG_3172



IMG_3171



Helm 2



IMG_3166



IMG_3144



saloon from steps



IMG_3143



IMG_0073



IMG_0070



IMG_3145



IMG_3140



IMG_3148



IMG_0072



IMG_3154



IMG_3153



IMG_3150



IMG_3151



IMG_3155



IMG_3156



IMG_3157



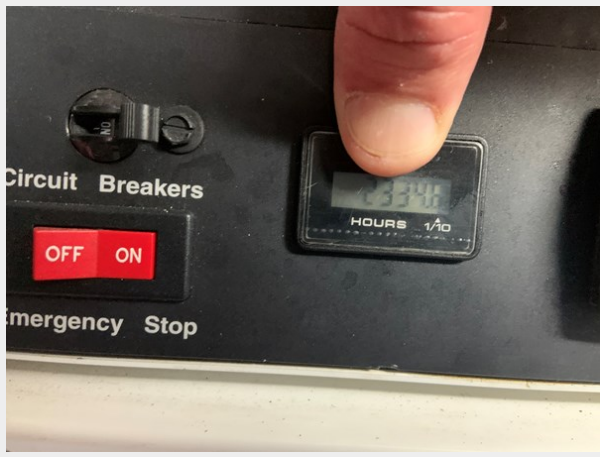
IMG_3158



Generator 2



gen hrs



IMG_3161



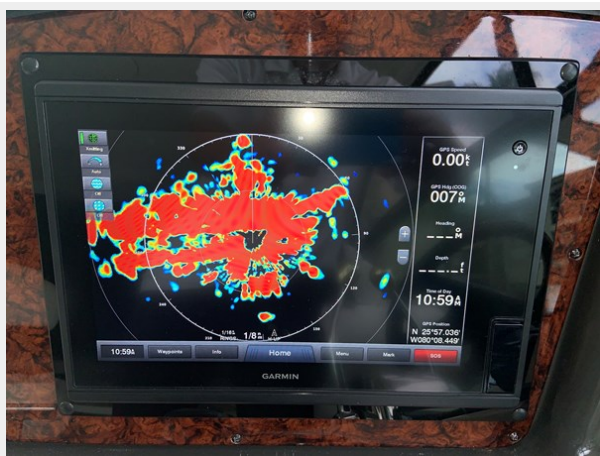
IMG_3163



IMG_3164



IMG_3165



port hardtop



CONTACTS

Andrey Shestakov, leading yacht broker of the sales department of Shestakov Yacht Sales Inc. Shestakov Yacht Sales Inc., the official representative of the Miami/Fort Lauderdale FL headquarters.

Contact details

Email: andrey@shestakovyachtsales.com

Web: shestakovyachtsales.com/en/

Telephones

USA: +1(954)274-4435

Office hours

Monday – Saturday: **9:00 - 21:00** EDT

Sunday: **closed**

Address



Harbour Towne Marina, 850 NE 3rd St,
STE 213, Dania, FL 33004