

# WHITE AND SILVER — MAGNUM MARINE



**Builder:** MAGNUM MARINE

**Year Built:** 2000

**Model:** Cruising Yacht

**Price:** PRICE ON APPLICATION

**Location:** Italy

**LOA:** 85' (25.91mm)

**Beam:** 19.33

**Min Draft:** 4' 5" (1.35mm)

**Cruise Speed:** 35 Knots Kts. (40 MPH)

**Max Speed:** 50 Knots Kts. (58 MPH)

Our experienced yacht broker, Andrey Shestakov, will help you choose and buy a yacht that best suits your needs **WHITE AND SILVER — MAGNUM MARINE** from our catalogue. Presently, at **Shestakov Yacht Sales Inc.**, we have a wide variety of yachts available on our sale's list. We also work in close contact with all the big **yacht manufacturers** from all over the world.

If you would like to buy a yacht **WHITE AND SILVER — MAGNUM MARINE** or would like help answering any questions concerning purchasing, selling or chartering a yacht, please call **+1(954)274-4435**

# TABLE OF CONTENTS

TABLE OF CONTENTS	2
SPECIFICATIONS	4
Overview	4
Basic Information	4
Dimensions	4
Speed, Capacities and Weight	4
Accommodations	5
Hull and Deck Information	5
Engine Information	5
PHOTOS	6
Magnum-801	6
magnum801-4	6
0012	6
0005	6
_MOT0558	6
Magnum 80-5	6
_MOT0547	7
_MOT0550	7
_MOT0538	7
_MOT0542	7
_MOT0582	7
_MOT0584	7
IMG_1705	8
IMG_1703	8
IMG_1702	8
IMG_1694	8
IMG_1701	8
_MOT0587	8

---

CONTACTS	9
Contact details	9
Telephones	9
Office hours	9
Address	9

---

# SPECIFICATIONS

---

## Overview

---

" There's not much difference between a magnum and a Rolls Royce. Both vehicles set standards that other builders find impossible to meet" **(Mike Smith, Boating Magazine)**

"From our experience, the magnum is structurally, mechanically, and electrically superior to any boat in its class."

**(McDonnell Douglas, Fighter Aircraft Manufacturer)**

"The sturdiness of armor and the beauty of a jewel".

**(from Boat Attitude)**

## Basic Information

---

**Category:** Cruising Yacht

**Sub Category:** Open Yacht

**Model Year:** 2000

**Year Built:** 2000

**Refit Type:** All Mechanical

**Country:** Italy

## Dimensions

---

**LOA:** 85' (25.91mm)

**Beam:** 19.33

**Min Draft:** 4' 5" (1.35mm)

## Speed, Capacities and Weight

---

**Cruise Speed:** 35 Knots Kts. (40 MPH) **Max Speed:** 50 Knots Kts. (58 MPH)

**Water Capacity:** 1800 Gallons

**Holding Tank:** 52.83 Gal Gallons

**Fuel Capacity:** 1585.03 Gal Gallons

---

## Accommodations

---

**Total Cabins:** 3

**Total Berths:** 4

**Sleeps:** 6

**Total Heads:** 3

**Crew Cabin:** 2

**Crew Berths:** 2

**Crew Heads:** 1

---

## Hull and Deck Information

---

**Hull Material:** Composite

**Hull Color:** White/white

**Hull Designer:** Magnum Marine

---

## Engine Information

---

**Engines:** 2

**Manufacturer:** MTU

**Engine Type:** Inboard

**Fuel Type:** Diesel

# PHOTOS

**Magnum-801**



**magnum801-4**



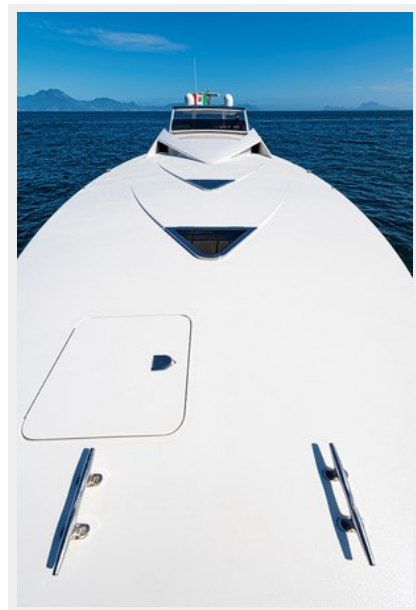
**0012**



**0005**



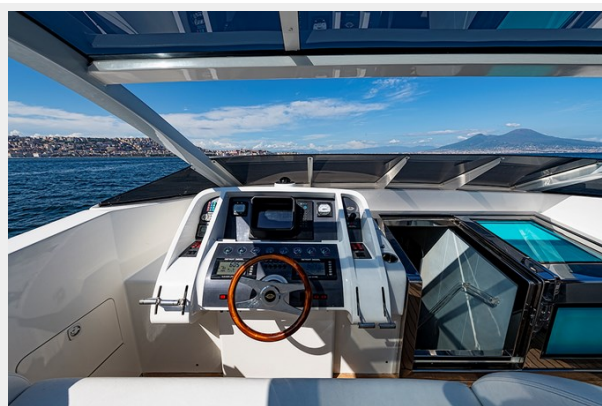
**\_MOT0558**



**Magnum 80-5**



**\_MOT0547**



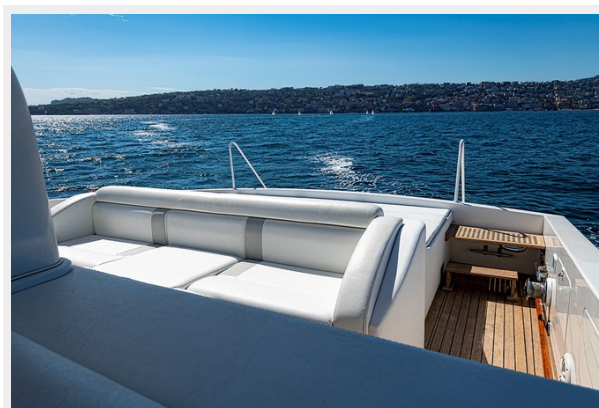
**\_MOT0550**



**\_MOT0538**



**\_MOT0542**



**\_MOT0582**



**\_MOT0584**



**IMG\_1705**



**IMG\_1703**



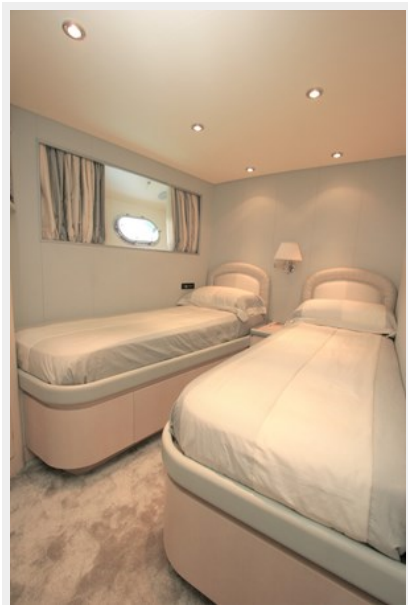
**IMG\_1702**



**IMG\_1694**



**IMG\_1701**



**\_MOT0587**





# CONTACTS

---

Andrey Shestakov, leading yacht broker of the sales department of Shestakov Yacht Sales Inc. Shestakov Yacht Sales Inc., the official representative of the Miami/Fort Lauderdale FL headquarters.

## Contact details

---

Email: **andrey@shestakovyachtsales.com**

Web: [shestakovyachtsales.com/en/](https://shestakovyachtsales.com/en/)

## Telephones

---

USA: **+1(954)274-4435**

## Office hours

---

Monday – Saturday: **9:00 - 21:00** EDT

Sunday: **closed**

## Address

---



Harbour Towne Marina, 850 NE 3rd St, STE 213, Dania, FL 33004