

21 2008 CLASSIC BOAT SHOP PISCES DAYS — CLASSIC BOATS INC



Builder: CLASSIC BOATS INC

Year Built: 2008

Model: Daysailer

Price: PRICE ON APPLICATION

Location: United States

LOA: 21' (6.4mm)

Beam: 7.16

Max Draft: 2' 11" (0.89mm)

Our experienced yacht broker, Andrey Shestakov, will help you choose and buy a yacht that best suits your needs 21 2008 Classic Boat Shop Pisces Daysailer — CLASSIC BOATS INC from our catalogue. Presently, at Shestakov Yacht Sales Inc., we have a wide variety of yachts available on our sale's list. We also work in close contact with all the big yacht manufacturers from all over the world.

If you would like to buy a yacht 21 2008 Classic Boat Shop Pisces Daysailer — CLASSIC BOATS INC or would like help answering any questions concerning purchasing, selling or chartering a yacht, please call **+1(954)274-4435**

TABLE OF CONTENTS

TABLE OF CONTENTS	2
SPECIFICATIONS	4
Overview	4
Basic Information	4
Dimensions	4
Hull and Deck Information	4
Engine Information	5
PHOTOS	6
2	6
3	6
4	6
5	6
6	6
7	6
8	7
9	7
10	7
11	7
12	7
13	7
14	8
15	8
16	8
17	8
19	8
18	8
20	9
21	9

22	9
23	9
24	9
25	9
26	10
27	10
29	10
28	10
30	11
31	11
32	11
33	11
35	11
34	11
36	12
37	12
38	12
CONTACTS	13
Contact details	13
Telephones	13
Office hours	13
Address	13

SPECIFICATIONS

Overview

The PISCES 21 DAYSAILER was inspired by the traditional Herreshoff fish class daysailer, and designed by C W Paine in 1999. These small yachts are finished to the highest standard of the Maine Boat Building tradition, the finest daysailer/weekender you will find anywhere, a great Long Island Sound boat. A carbon fiber mast aids her already pleasing sailing performance and makes stepping and rigging a breeze. Lady features an Advanced 4.15hp Electric Motor and Drive. Very well maintained by her knowledgeable owner she shows well and ready to go. At just under 21 feet overall (20 feet, 9 inches), the Pisces has a waterline length of 16 feet, 4 inches and a beam of 7 feet, 2 inches. Even with an external lead keel weighing 1,600 pounds (just under half of her total displacement), she draws only 2 feet, 11 inches. Under sail, the Pisces 21 has the feel of a bigger boat, thanks to its deep and roomy cockpit and the inherent comfort of riding in a sturdy, steady-going displacement boat. Yet it is simply rigged and easy to control, and it responds nicely to even a light wind.

Basic Information

Category: Daysailer

Model Year: 2008

Year Built: 2008

Country: United States

Dimensions

LOA: 21' (6.4mm)

LWL: 16' 4" (4.98mm)

Beam: 7.16

Max Draft: 2' 11" (0.89mm)

Hull and Deck Information

Hull Material: Fiberglass

Exterior Designer: Chuck Paine

Engine Information

Engines: 1

Manufacturer: Electric

Engine Type: Inboard

Fuel Type: Electric

PHOTOS

2



3



4



5



6



7



8



9



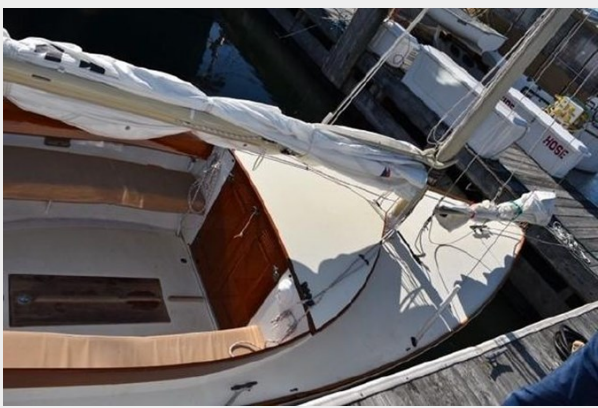
10



11



12



13



14



15



16



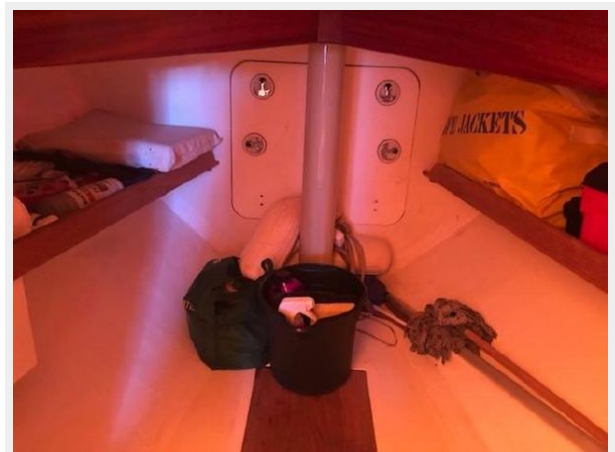
17



18



19



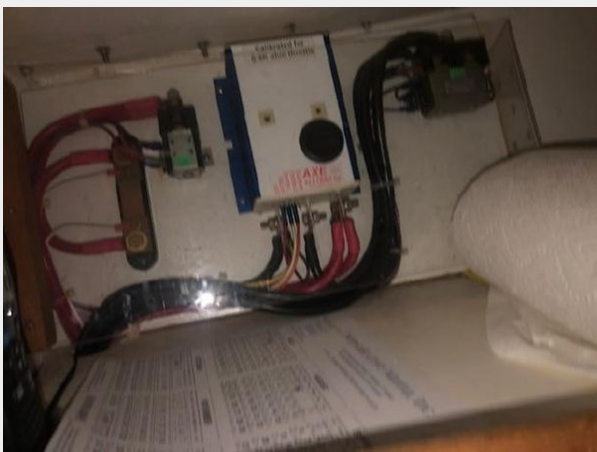
20



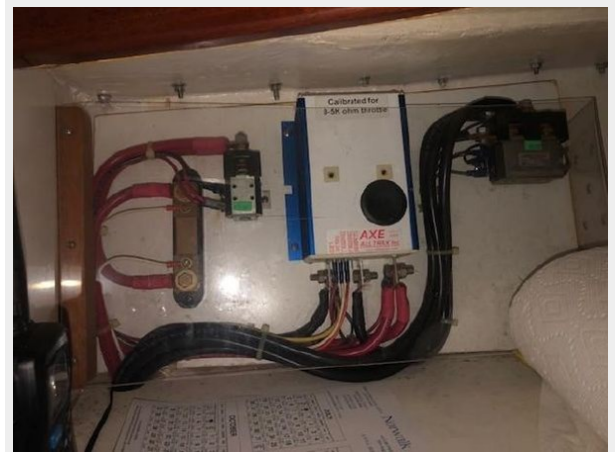
21



22



23



24



25



26



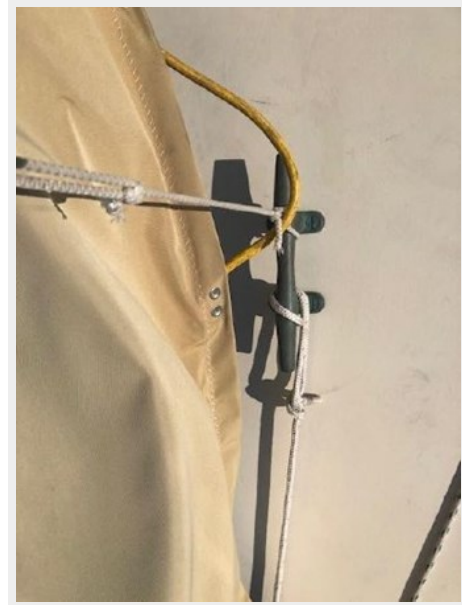
27



28



29



30



31



32



33



34



35



36



37



38



CONTACTS

Andrey Shestakov, leading yacht broker of the sales department of Shestakov Yacht Sales Inc. Shestakov Yacht Sales Inc., the official representative of the Miami/Fort Lauderdale FL headquarters.

Contact details

Email: andrey@shestakovyachtsales.com

Web: shestakovyachtsales.com/en/

Telephones

USA: +1(954)274-4435

Office hours

Monday – Saturday: **9:00 - 21:00** EDT

Sunday: **closed**

Address



Harbour Towne Marina, 850 NE 3rd St,
STE 213, Dania, FL 33004