

NO NAME — COMMERCIAL BOAT WORKS



Builder: COMMERCIAL BOAT WORKS

LOA: 64' 10" (19.76mm)

Year Built: 2000

Beam: 15

Model: Commercial Vessel

Max Draft: 8' (2.44mm)

Price: PRICE ON APPLICATION

Location: United States

Our experienced yacht broker, Andrey Shestakov, will help you choose and buy a yacht that best suits your needs **No Name — COMMERCIAL BOAT WORKS** from our catalogue. Presently, at Shestakov Yacht Sales Inc., we have a wide variety of yachts available on our sale's list. We also work in close contact with all the big yacht manufacturers from all over the world.

If you would like to buy a yacht **No Name — COMMERCIAL BOAT WORKS** or would like help answering any questions concerning purchasing, selling or chartering a yacht, please call **+1(954)274-4435**

TABLE OF CONTENTS

TABLE OF CONTENTS	2
SPECIFICATIONS	3
Overview	3
Basic Information	3
Dimensions	3
Hull and Deck Information	3
Engine Information	4
PHOTOS	5
Screen Shot 2020-04-13 at 2.57.44 PM	5
Screen Shot 2020-04-13 at 2.57.35 PM	5
Screen Shot 2020-04-13 at 2.57.55 PM	5
Screen Shot 2020-04-13 at 2.57.49 PM	5
Screen Shot 2020-04-13 at 2.58.02 PM	5
Screen Shot 2020-04-13 at 2.58.07 PM	5
Screen Shot 2020-04-13 at 2.58.14 PM	6
Screen Shot 2020-04-13 at 2.58.20 PM	6
Screen Shot 2020-04-13 at 2.58.26 PM	6
Screen Shot 2020-04-13 at 2.58.35 PM	6
Screen Shot 2020-04-13 at 2.58.41 PM	6
Screen Shot 2020-04-13 at 2.58.46 PM	6
Screen Shot 2020-04-13 at 2.58.52 PM	7
Screen Shot 2020-04-13 at 2.58.58 PM	7
CONTACTS	8
Contact details	8
Telephones	8
Office hours	8
Address	8

SPECIFICATIONS

Overview

M/V Sea Life Discovery was built by Midship Marine, Harvey, LA. She has a COI for 49 passengers and has a Limited Coastwise endorsement that includes Catalina Island.

This one of a kind semi submarine is unique in that it has seating for 49 below in the underwater viewing area and seating on the main deck above water. Other like vessels have one or the other. Her twin John Deere diesels provide a top speed of 7 knots and a cruising speed of 5 knots. Specially designed rudders and a bow thruster provide excellent maneuvering capabilities. An enclosed aft deck provides shelter, a food service area and retail space. She is equipped with a full suite of navigation electronics, PA , sound and HD display system w/ multiple monitors installed.

Hauled for service and bottom paint September 2019.

These and her unique design features equip M/V SLD to be successful for a variety of missions possible involving tourism, underwater research or education.

Basic Information

Category: Commercial Vessel

Model Year: 2000

Year Built: 2000

Country: United States

Dimensions

LOA: 64' 10" (19.76mm)

Beam: 15

Max Draft: 8' (2.44mm)

Hull and Deck Information

Hull Material: Aluminum

Engine Information

Engines: 2

Manufacturer: John Deere

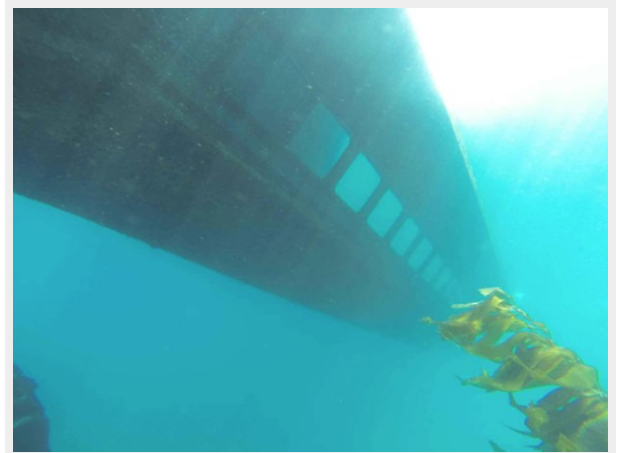
Fuel Type: Diesel

PHOTOS

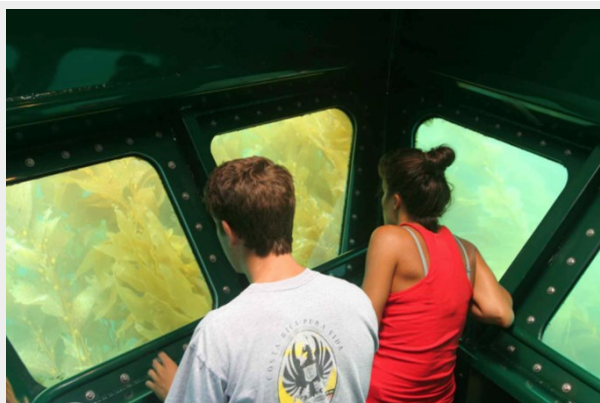
Screen Shot 2020-04-13 at 2.57.35 PM



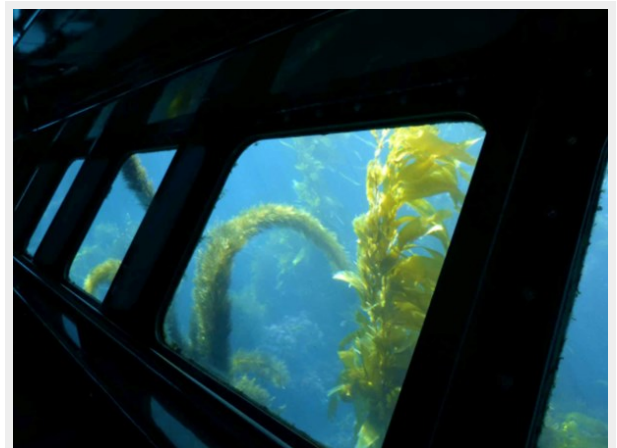
Screen Shot 2020-04-13 at 2.57.44 PM



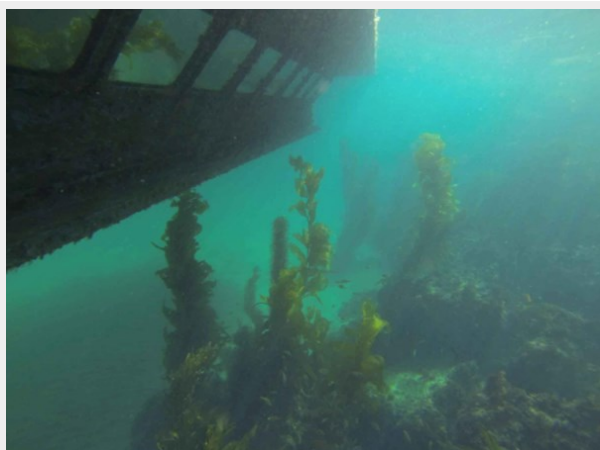
Screen Shot 2020-04-13 at 2.57.49 PM



Screen Shot 2020-04-13 at 2.57.55 PM



Screen Shot 2020-04-13 at 2.58.02 PM



Screen Shot 2020-04-13 at 2.58.07 PM



Screen Shot 2020-04-13 at 2.58.14 PM



Screen Shot 2020-04-13 at 2.58.20 PM



Screen Shot 2020-04-13 at 2.58.26 PM



Screen Shot 2020-04-13 at 2.58.35 PM



Screen Shot 2020-04-13 at 2.58.41 PM



Screen Shot 2020-04-13 at 2.58.46 PM



Screen Shot 2020-04-13 at 2.58.52 PM



Screen Shot 2020-04-13 at 2.58.58 PM



CONTACTS

Andrey Shestakov, leading yacht broker of the sales department of Shestakov Yacht Sales Inc. Shestakov Yacht Sales Inc., the official representative of the Miami/Fort Lauderdale FL headquarters.

Contact details

Email: andrey@shestakovyachtsales.com

Web: shestakovyachtsales.com/en/

Telephones

USA: +1(954)274-4435

Office hours

Monday – Saturday: **9:00 - 21:00** EDT

Sunday: **closed**

Address



Harbour Towne Marina, 850 NE 3rd St,
STE 213, Dania, FL 33004