

## SKYE — ISLAND PACKET YACHTS



**Builder:** ISLAND PACKET YACHTS

**Year Built:** 2015

**Model:** Cruising Sailboat

**Price:** \$265,000 USD

**Location:** US Virgin Islands

**LOA:** 37' 10" (11.53mm)

**Beam:** 13.08

**Cruise Speed:** 6 Knots Kts. (7 MPH)

**Max Speed:** 13 Knots Kts. (15 MPH)

Our experienced yacht broker, Andrey Shestakov, will help you choose and buy a yacht that best suits your needs **SKYE — ISLAND PACKET YACHTS** from our catalogue. Presently, at Shestakov Yacht Sales Inc., we have a wide variety of yachts available on our sale's list. We also work in close contact with all the big yacht manufacturers from all over the world.

If you would like to buy a yacht **SKYE — ISLAND PACKET YACHTS** or would like help answering any questions concerning purchasing, selling or chartering a yacht, please call **+1(954)274-4435**

# TABLE OF CONTENTS

TABLE OF CONTENTS	2
SPECIFICATIONS	4
Overview	4
Basic Information	4
Dimensions	4
Speed, Capacities and Weight	4
Accommodations	4
Hull and Deck Information	5
Engine Information	5
PHOTOS	6
IMG_2325	6
IMG_2648	6
IMG_3296	6
IMG_2701	6
Skye-Aft-bunk	7
IMG_3298	7
Skye-Cedar-lined-closet	7
Skye-Cocktail-table	7
Skye-Engine-Room	8
Skye-Engine	8
Skye-Forward-Master-stateroom	8
Skye-Galley-2	8
Skye-Galley-A	9
Skye-Head	9
skye-main-salon-2	9
Skye-Main-Salon-facing-Aft	9
Skye-Main-Salon	10
Skye-Refrigeratorfreezer	10

---

Skye-Shower	10
20191113_171028	10
CONTACTS	11
Contact details	11
Telephones	11
Office hours	11
Address	11

---

---

# SPECIFICATIONS

---

## Overview

---

2015 Island Packet 370, two staterooms, one head, cutter rig, bimini and dodger, bow thrusters, autopilot, Fridgaboat keel cooled refrigeration, new fully battened Quantum RF mainsail (June 2022), and many more features. This boat is located in the US Virgin Islands and is the ideal vessel for sailing the Caribbean, and beyond.

## Basic Information

---

**Category:** Cruising Sailboat

**Model Year:** 2015

**Year Built:** 2015

**Country:** US Virgin Islands

## Dimensions

---

**LOA:** 37' 10" (11.53mm)

**Beam:** 13.08

## Speed, Capacities and Weight

---

**Cruise Speed:** 6 Knots Kts. (7 MPH)

**Max Speed:** 13 Knots Kts. (15 MPH)

**Water Capacity:** 160 Gallons

**Holding Tank:** 35 Gal Gallons

**Fuel Capacity:** 75 Gal Gallons

## Accommodations

---

**Total Cabins:** 2

**Total Berths:** 7

**Sleeps:** 7

**Total Heads:** 1

---

## Hull and Deck Information

---

**Hull Material:** Composite Fiberglass

**Hull Configuration:** Full Displacement

**Hull Color:** beige

**Hull Designer:** Robert Johnson

**Exterior Designer:** Robert Johnson

**Interior Designer:** Robert Johnson

---

## Engine Information

---

**Engines:** 1

**Manufacturer:** Yanmar

**Engine Type:** Inboard

**Fuel Type:** Diesel

# PHOTOS

IMG\_2325



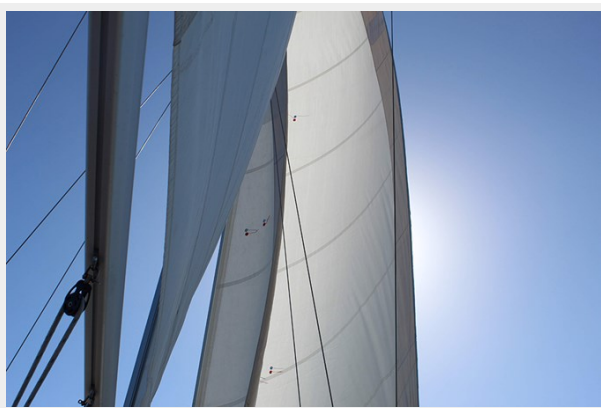
IMG\_2648



IMG\_3296



IMG\_2701





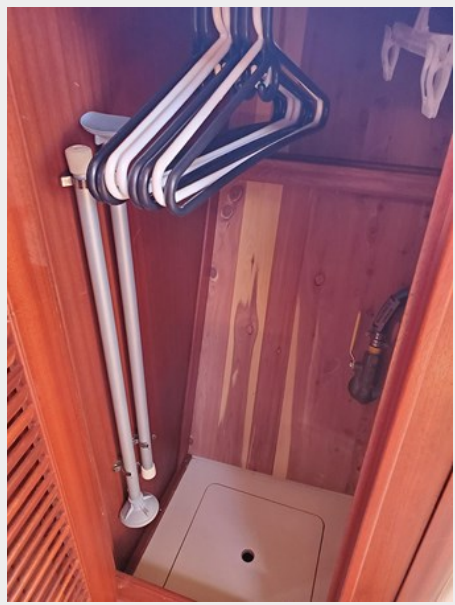
IMG\_3298



Skye-Aft-bunk



Skye-Cedar-lined-closet



Skye-Cocktail-table



**Skye-Engine-Room**



**Skye-Engine**



**Skye-Forward-Master-stateroom**



**Skye-Galley-2**





**Skye-Galley-A**



**Skye-Head**



**skye-main-salon-2**



**Skye-Main-Salon-facing-Aft**



**Skye-Main-Salon**



**Skye-Refrigeratorfreezer**



**Skye-Shower**



**20191113\_171028**



# CONTACTS

---

Andrey Shestakov, leading yacht broker of the sales department of Shestakov Yacht Sales Inc. Shestakov Yacht Sales Inc., the official representative of the Miami/Fort Lauderdale FL headquarters.

## Contact details

---

Email: [andrey@shestakovyachtsales.com](mailto:andrey@shestakovyachtsales.com)

Web: [shestakovyachtsales.com/en/](http://shestakovyachtsales.com/en/)

## Telephones

---

USA: +1(954)274-4435

## Office hours

---

Monday – Saturday: **9:00 - 21:00** EDT

Sunday: **closed**

## Address

---



Harbour Towne Marina, 850 NE 3rd St,  
STE 213, Dania, FL 33004