

# SY SUNNY HILL — DE AMSTEL, NETHERLANDS



**Builder:** DE AMSTEL, NETHERLANDS

**Year Built:** 1987

**Model:** Motorsailer

**Price:** PRICE ON APPLICATION

**Location:** Sweden

**LOA:** 118' 2" (36mm)

**Beam:** 26.24

**Min Draft:** 11' 2" (3.4mm)

**Max Draft:** 11' 2" (3.4mm)

**Cruise Speed:** 10 Knots Kts. (12 MPH)

**Max Speed:** 10 Knots Kts. (12 MPH)

Our experienced yacht broker, Andrey Shestakov, will help you choose and buy a yacht that best suits your needs **SY SUNNY HILL — DE AMSTEL, NETHERLANDS** from our catalogue. Presently, at Shestakov Yacht Sales Inc., we have a wide variety of yachts available on our sale's list. We also work in close contact with all the big yacht manufacturers from all over the world.

If you would like to buy a yacht **SY SUNNY HILL — DE AMSTEL, NETHERLANDS** or would like help answering any questions concerning purchasing, selling or chartering a yacht, please call **+1(954)274-4435**

---

# TABLE OF CONTENTS

---

TABLE OF CONTENTS	2
SPECIFICATIONS	4
Overview	4
Basic Information	4
Dimensions	4
Speed, Capacities and Weight	4
Accommodations	4
Hull and Deck Information	5
Engine Information	5
PHOTOS	6
2746.3	6
2746.4	6
2746.5	6
2746.6	6
2746.7	6
2746.8	6
2746.9	7
2746.10	7
2746.11	7
2746.13	7
2746.15	7
2746.16	7
2746.17	8
CONTACTS	9
Contact details	9
Telephones	9
Office hours	9
Address	9



---

# SPECIFICATIONS

---

## Overview

---

N/A

## Basic Information

---

**Category:** Motorsailor

**Model Year:** 1987

**Year Built:** 1987

**Refit Type:** Full refit

**Country:** Sweden

## Dimensions

---

**LOA:** 118' 2" (36mm)

**Beam:** 26.24

**Min Draft:** 11' 2" (3.4mm)

**Max Draft:** 11' 2" (3.4mm)

## Speed, Capacities and Weight

---

**Cruise Speed:** 10 Knots Kts. (12 MPH)

**Cruise Speed Range:** 4000

**Max Speed:** 10 Knots Kts. (12 MPH)

**Gross Tonnage:** 179 Pounds

**Water Capacity:** 6000 Gallons

**Holding Tank:** 1320.86 Gal Gallons

**Fuel Capacity:** 5019.27 Gal Gallons

## Accommodations

---

**Total Cabins:** 5

**Sleeps:** 10

**Crew Cabin:** 6

**Crew Berths:** 6

---

## Hull and Deck Information

---

**Hull Material:** Steel

**Hull Color:** Blue

---

## Engine Information

---

**Engines:** 1

**Manufacturer:** Volvo

**Engine Type:** Inboard

**Fuel Type:** Diesel

# PHOTOS

2746.3



2746.4



2746.5



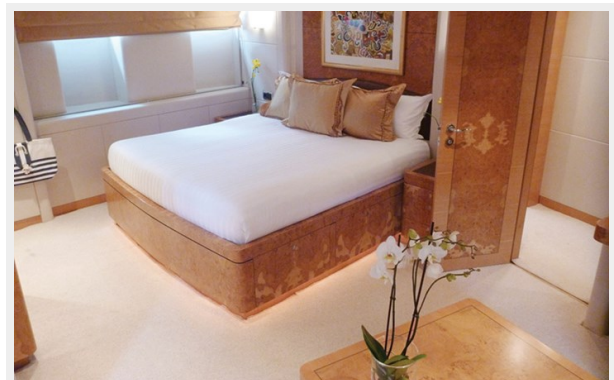
2746.6



2746.7



2746.8



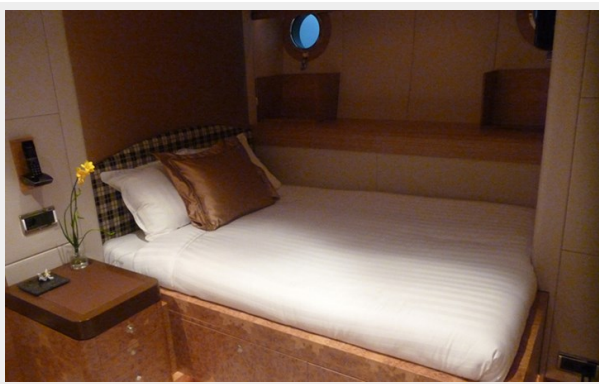
2746.9



2746.10



2746.11



2746.13



2746.15



2746.16



2746.17





# CONTACTS

---

Andrey Shestakov, leading yacht broker of the sales department of Shestakov Yacht Sales Inc. Shestakov Yacht Sales Inc., the official representative of the Miami/Fort Lauderdale FL headquarters.

## Contact details

---

Email: [andrey@shestakovyachtsales.com](mailto:andrey@shestakovyachtsales.com)

Web: [shestakovyachtsales.com/en/](http://shestakovyachtsales.com/en/)

## Telephones

---

USA: +1(954)274-4435

## Office hours

---

Monday – Saturday: **9:00 - 21:00** EDT

Sunday: **closed**

## Address

---



Harbour Towne Marina, 850 NE 3rd St,  
STE 213, Dania, FL 33004