

RESTLESS — MAINSHIP



Builder: MAINSHIP

Year Built: 2004

Model: Trawler Yacht

Price: PRICE ON APPLICATION

Location: United States

LOA: 43' (13.11mm)

Beam: 15.5

Max Draft: 3' 8" (1.12mm)

Our experienced yacht broker, Andrey Shestakov, will help you choose and buy a yacht that best suits your needs **Restless — MAINSHIP** from **our catalogue**. Presently, at **Shestakov Yacht Sales Inc.**, we have a wide variety of yachts available on **our sale's list**. We also work in close contact with all the big **yacht manufacturers** from all over the world.

If you would like to buy a yacht **Restless — MAINSHIP** or would like help answering any questions concerning purchasing, selling or chartering a yacht, please call **+1(954)274-4435**

TABLE OF CONTENTS

TABLE OF CONTENTS	2
SPECIFICATIONS	5
Overview	5
Basic Information	5
Dimensions	5
Speed, Capacities and Weight	5
Accommodations	5
Hull and Deck Information	6
Engine Information	6
PHOTOS	7
3	7
2	7
4	7
5	7
6	7
7	7
8	8
9	8
10	8
11	8
12	9
13	9
14	9
15	9
17	10
16	10
18	10
19	10

20	11
21	11
22	11
23	11
25	12
24	12
26	12
27	12
28	13
29	13
30	13
31	13
33	13
32	13
34	14
35	14
36	14
37	14
38	15
39	15
40	15
41	15
42	16
43	16
44	16
45	16
46	17
47	17
48	17

CONTACTS	18
Contact details	18
Telephones	18
Office hours	18
Address	18

SPECIFICATIONS

Overview

*This listing is available for virtual and in person tours, please contact the listing broker to schedule an appointment***LESS THAN 500 ENGINE HOURS!** Restless is a 2004 Mainship 430 Trawler, Aft Cabin. Two Stateroom, Galley Down Version. The 430 Aft Cabin has wonderful space, storage and a great layout. She features two huge private berths with full heads and separate showers. The twin 350Hp diesel cats have less than 500 hours on them and the 8Kw diesel generator has less than 300 hours! The 3 Zone AC/Heat, Full Galley with propane stove top and oven, freshwater heads, entertainment systems and incredible views from the flybridge should put Restless at the top of your list of boats to see! Check out Full Specs for more details!

Basic Information

Category: Trawler Yacht

Model Year: 2004

Year Built: 2004

Country: United States

Dimensions

LOA: 43' (13.11mm)

Beam: 15.5

Max Draft: 3' 8" (1.12mm)

Speed, Capacities and Weight

Water Capacity: 250 Gallons

Holding Tank: 50 Gal Gallons

Fuel Capacity: 500 Gal Gallons

Accommodations

Total Cabins: 2

Total Heads: 2

Hull and Deck Information

Hull Material: Fiberglass

Hull Configuration: Modified V-Hull

Engine Information

Engines: 2

Manufacturer: Caterpillar

Engine Type: Inboard

Fuel Type: Diesel

PHOTOS

2



3



4



5



6



7



8



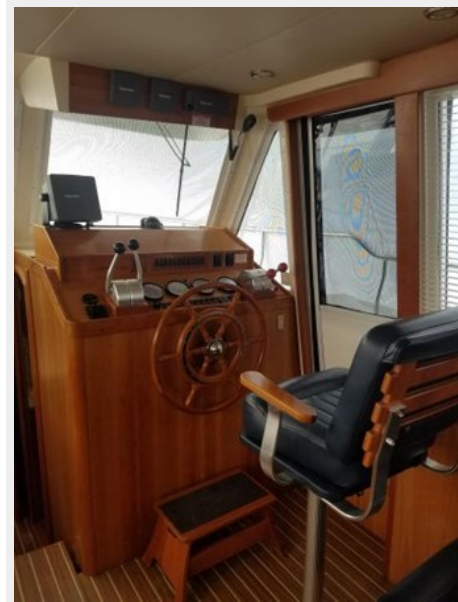
9



10



11



12



13



14



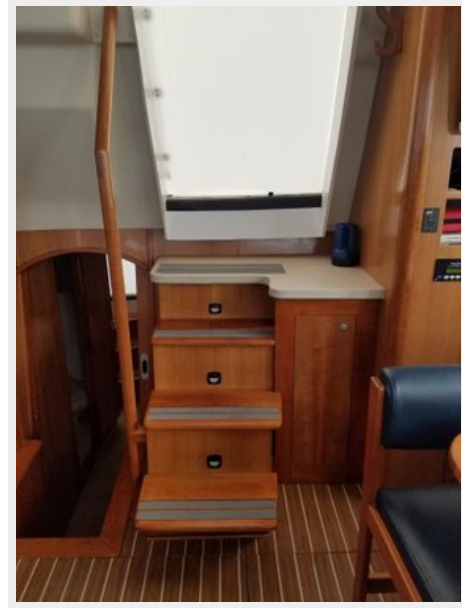
15



16



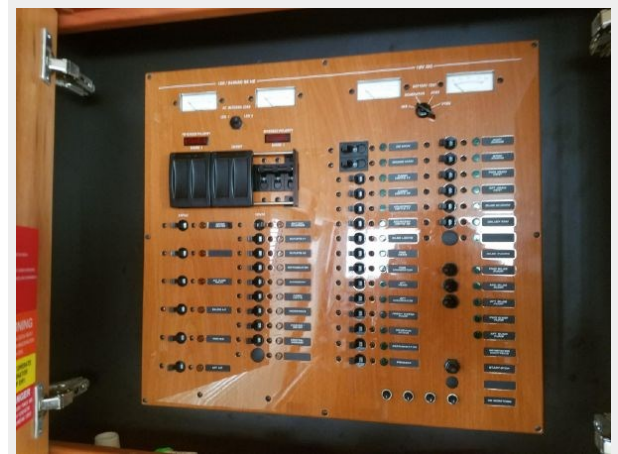
17



18



19



20



21



22



23



24



25



26



27



28



29



30



31



32



33



34



35



36



37



38



39



40



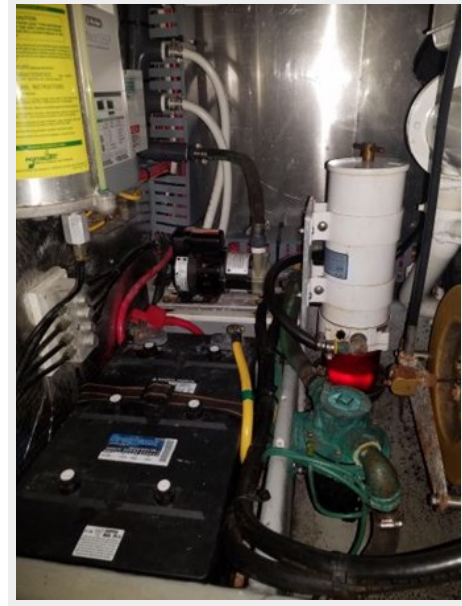
41



42



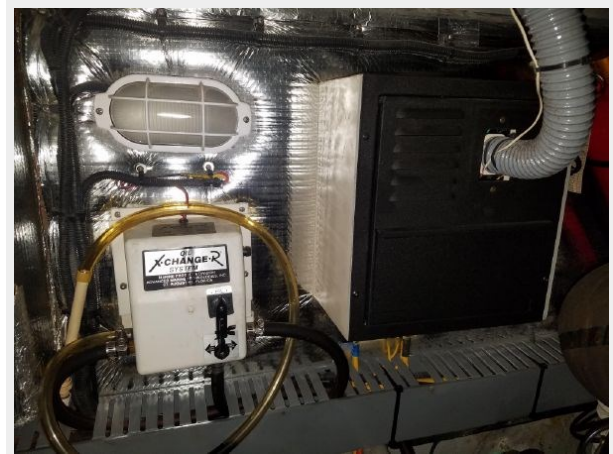
43



44



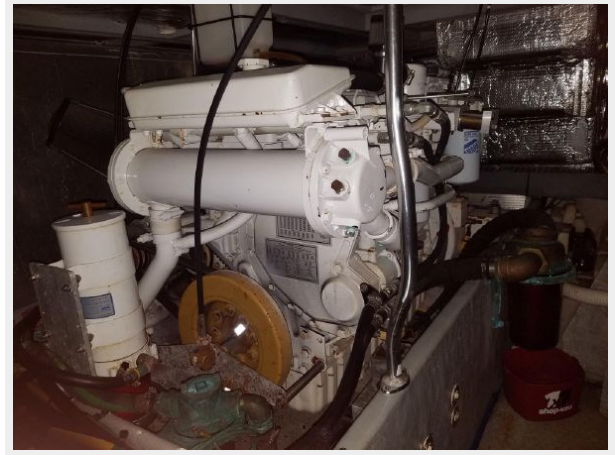
45



46



47



48



CONTACTS

Andrey Shestakov, leading yacht broker of the sales department of Shestakov Yacht Sales Inc. Shestakov Yacht Sales Inc., the official representative of the Miami/Fort Lauderdale FL headquarters.

Contact details

Email: **andrey@shestakovyachtsales.com**

Web: shestakovyachtsales.com/en/

Telephones

USA: **+1(954)274-4435**

Office hours

Monday – Saturday: **9:00 - 21:00** EDT

Sunday: **closed**

Address



Harbour Towne Marina, 850 NE 3rd St, STE 213, Dania, FL 33004