

AUCOOT — BERTRAM



Builder: BERTRAM

Year Built: 2007

Model: Cruising Yacht

Price: PRICE ON APPLICATION

Location: United States

LOA: 39' 4" (11.99mm)

Beam: 13.5

Max Draft: 3' 9" (1.14mm)

Cruise Speed: 26 Knots Kts. (30 MPH)

Our experienced yacht broker, Andrey Shestakov, will help you choose and buy a yacht that best suits your needs **Aucoot — BERTRAM** from our catalogue. Presently, at Shestakov Yacht Sales Inc., we have a wide variety of yachts available on our sale's list. We also work in close contact with all the big yacht manufacturers from all over the world.

If you would like to buy a yacht **Aucoot — BERTRAM** or would like help answering any questions concerning purchasing, selling or chartering a yacht, please call **+1(954)274-4435**

TABLE OF CONTENTS

TABLE OF CONTENTS	2
SPECIFICATIONS	5
Overview	5
Basic Information	5
Dimensions	5
Speed, Capacities and Weight	5
Accommodations	5
Hull and Deck Information	6
Engine Information	6
PHOTOS	7
2	7
3	7
5	7
4	7
7	8
6	8
8	8
9	8
11	9
10	9
12	9
13	9
14	10
15	10
16	10
17	10
18	10
19	10

20	11
21	11
22	11
23	11
24	11
25	11
26	12
27	12
28	12
29	12
31	13
30	13
32	13
33	13
34	14
35	14
36	14
37	14
38	14
39	14
40	15
41	15
42	15
43	15
CONTACTS	16
Contact details	16
Telephones	16
Office hours	16
Address	16

SPECIFICATIONS

Overview

*This listing is available for virtual and in person tours, please contact the listing broker to schedule an appointment*This Bertram 360 Express is unlike any that you will find. She has been professionally cared for, not fished, cruised in fresh water (one year) and the rest in the Northeast US. Then stored in doors, in the off season for her entire life, and it shows. She is loaded with gear, clean and upgraded to the highest standards. She features the following gear: V-Drive shafts, (No Pod Drive Units!) Upgraded Electronics, Fully Enclosed Canvas, Low Hour Generator and Engines, AC/Heat and entertainment systems. She can cruise with the family comfortably or can be converted into a fishing machine without much effort. Call for an appointment to see this great boat!

Basic Information

Category: Cruising Yacht

Sub Category: Express

Model Year: 2007

Year Built: 2007

Country: United States

Dimensions

LOA: 39' 4" (11.99mm)

Beam: 13.5

Max Draft: 3' 9" (1.14mm)

Speed, Capacities and Weight

Cruise Speed: 26 Knots Kts. (30 MPH)

Water Capacity: 82 Gallons

Holding Tank: 37 Gal Gallons

Fuel Capacity: 406 Gal Gallons

Accommodations

Total Heads: 1

Hull and Deck Information

Hull Material: Fiberglass

Hull Configuration: Deep Vee

Engine Information

Engines: 2

Manufacturer: Volvo Penta

Engine Type: Inboard

Fuel Type: Diesel

PHOTOS

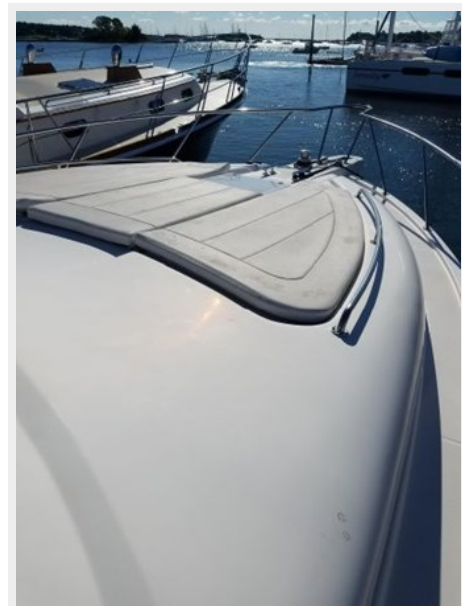
2



3



5



4



6



7



8



9



10



11



12



13



14



15



16



17



18



19



20



21



22



23



24



25



26



27



28



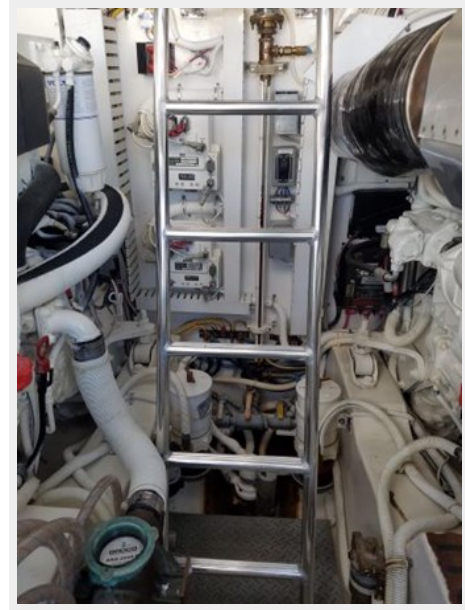
29



30



31



32



33



34



35



36



37



38



39



40



41



42



43



CONTACTS

Andrey Shestakov, leading yacht broker of the sales department of Shestakov Yacht Sales Inc. Shestakov Yacht Sales Inc., the official representative of the Miami/Fort Lauderdale FL headquarters.

Contact details

Email: andrey@shestakovyachtsales.com

Web: shestakovyachtsales.com/en/

Telephones

USA: +1(954)274-4435

Office hours

Monday – Saturday: **9:00 - 21:00** EDT

Sunday: **closed**

Address



Harbour Towne Marina, 850 NE 3rd St,
STE 213, Dania, FL 33004