

SHADOWFAX — ISLAND PACKET YACHTS



Builder: ISLAND PACKET YACHTS

Year Built: 2002

Model: Cruising Sailboat

Price: PRICE ON APPLICATION

Location: United States

LOA: 39' 7" (12.06mm)

Beam: 13.16

Max Draft: 4' 7" (1.4mm)

Our experienced yacht broker, Andrey Shestakov, will help you choose and buy a yacht that best suits your needs **Shadowfax — ISLAND PACKET YACHTS** from our catalogue. Presently, at **Shestakov Yacht Sales Inc.**, we have a wide variety of yachts available on our sale's list. We also work in close contact with all the big yacht manufacturers from all over the world.

If you would like to buy a yacht **Shadowfax — ISLAND PACKET YACHTS** or would like help answering any questions concerning purchasing, selling or chartering a yacht, please call **+1(954)274-4435**

TABLE OF CONTENTS

TABLE OF CONTENTS	2
SPECIFICATIONS	4
Overview	4
Basic Information	4
Dimensions	4
Speed, Capacities and Weight	4
Accommodations	4
Hull and Deck Information	4
Engine Information	5
PHOTOS	6
2	6
3	6
5	6
4	6
6	7
7	7
8	7
9	7
10	7
11	7
12	8
13	8
14	8
15	8
16	8
17	8
18	9
19	9

20	9
21	9
22	10
23	10
24	10
25	10
26	11
27	11
28	11
29	11
30	12
31	12
33	12
32	12
34	13
35	13
36	13
37	13
CONTACTS	14
Contact details	14
Telephones	14
Office hours	14
Address	14

SPECIFICATIONS

Overview

*This listing is available for virtual and in person tours, please contact the listing broker to schedule an appointment*Shadowfax is one of the best maintained IP380 on the market today. The boat has just been hauled for the season by New England Boat Works. The winter projects for the yard are to strip the exterior teak and reapply multiple coats of Cetol light and replace the holding tank.

Basic Information

Category: Cruising Sailboat

Model Year: 2002

Year Built: 2002

Country: United States

Dimensions

LOA: 39' 7" (12.06mm)

LWL: 32' (9.75mm)

Beam: 13.16

Max Draft: 4' 7" (1.4mm)

Speed, Capacities and Weight

Water Capacity: 170 Gallons

Fuel Capacity: 85 Gal Gallons

Accommodations

Total Cabins: 2

Total Berths: 7

Total Heads: 1

Hull and Deck Information

Hull Material: Fiberglass

Hull Designer: Robert K. Johnson

Engine Information

Engines: 1

Manufacturer: Yanmar

Engine Type: Inboard

Fuel Type: Diesel

PHOTOS

2



3



4



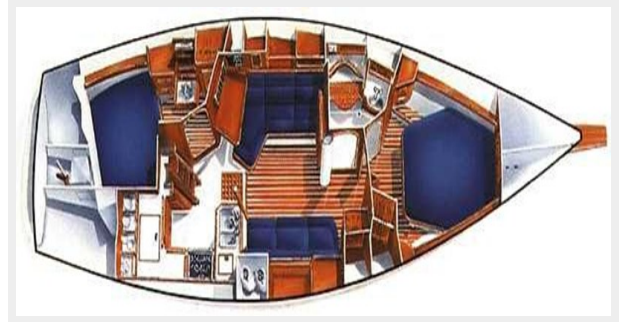
5



6



7



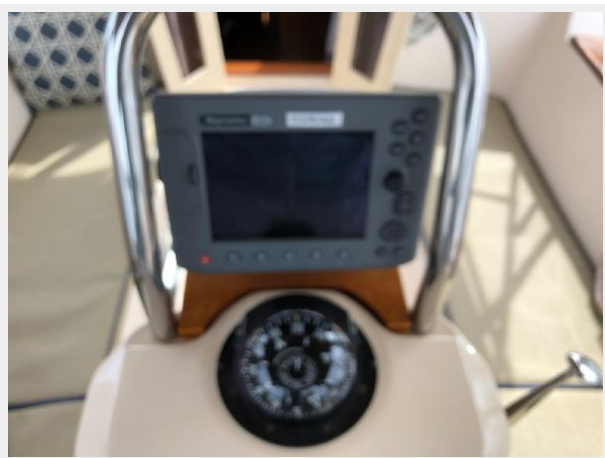
8



9



10



11



12



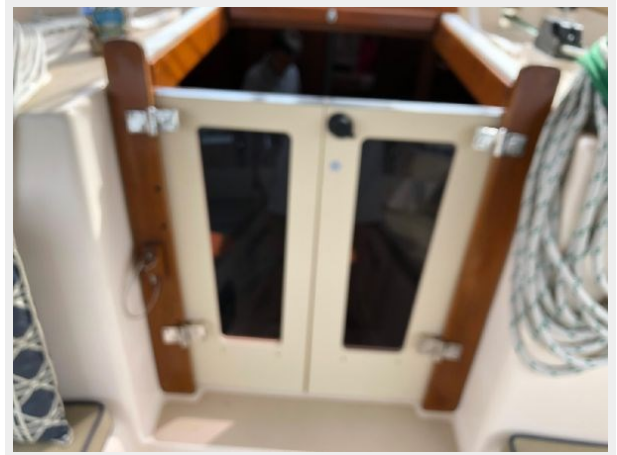
13



14



15



16



17



18



19



20



21



22



23



24



25



26



27



28



29



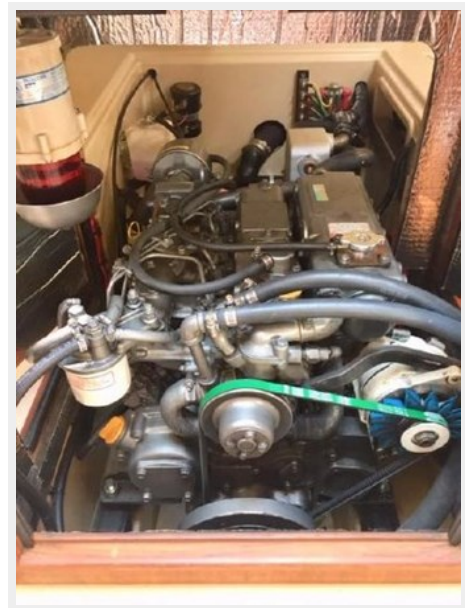
30



31



33



32



34



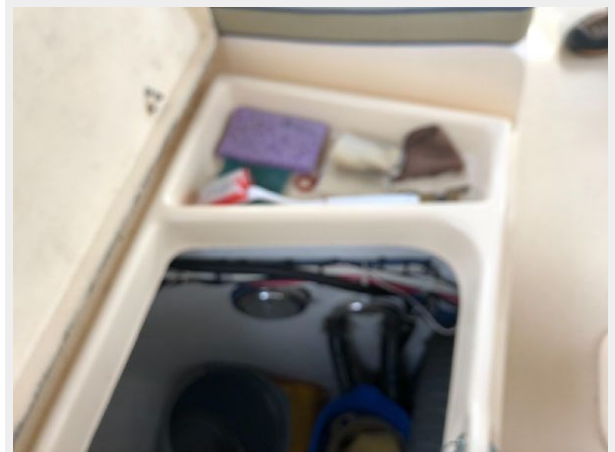
35



36



37



CONTACTS

Andrey Shestakov, leading yacht broker of the sales department of Shestakov Yacht Sales Inc. Shestakov Yacht Sales Inc., the official representative of the Miami/Fort Lauderdale FL headquarters.

Contact details

Email: andrey@shestakovyachtsales.com

Web: shestakovyachtsales.com/en/

Telephones

USA: +1(954)274-4435

Office hours

Monday – Saturday: **9:00 - 21:00** EDT

Sunday: **closed**

Address



Harbour Towne Marina, 850 NE 3rd St,
STE 213, Dania, FL 33004