

LUCKY LEMAIRE II — EVERGLADES



Builder: EVERGLADES

Year Built: 2011

Model: Boats

Price: PRICE ON APPLICATION

Location: United States

LOA: 32' 4" (9.86mm)

Beam: 10.66

Cruise Speed: 30 Knots Kts. (35 MPH)

Max Speed: 56 Knots Kts. (64 MPH)

Our experienced yacht broker, Andrey Shestakov, will help you choose and buy a yacht that best suits your needs **Lucky Lemaire II — EVERGLADES** from **our catalogue**. Presently, at **Shestakov Yacht Sales Inc.**, we have a wide variety of yachts available on **our sale's list**. We also work in close contact with all the big **yacht manufacturers** from all over the world.

If you would like to buy a yacht **Lucky Lemaire II — EVERGLADES** or would like help answering any questions concerning purchasing, selling or chartering a yacht, please call **+1(954)274-4435**

TABLE OF CONTENTS

TABLE OF CONTENTS	2
SPECIFICATIONS	5
Overview	5
Basic Information	5
Dimensions	5
Speed, Capacities and Weight	5
Accommodations	5
Hull and Deck Information	6
Engine Information	6
PHOTOS	7
3	7
2	7
5	7
4	7
6	8
7	8
8	8
9	8
10	9
11	9
12	9
13	9
14	9
15	9
16	10
17	10
18	10
19	10

20	11
21	11
22	11
23	11
24	12
25	12
26	12
27	12
29	13
28	13
30	13
31	13
32	14
33	14
34	14
35	14
36	15
37	15
38	15
39	15
40	16
41	16
42	16
43	16
44	17
45	17
46	17
47	17
48	18

49	18
50	18
51	18
52	19
CONTACTS	20
Contact details	20
Telephones	20
Office hours	20
Address	20

SPECIFICATIONS

Overview

'Lucky Lemaire II' is a 2011 325CC from Everglades, powered by twin Yamaha 350hp 4-stroke V8 engines with just 750 hours on them. Loaded with standard and optional features, including an extensive electronics package, dual 15" Garmin displays, Auto-pilot, radar, plotter, fish finder, and integrated engine data displays, and separate Yamaha engine systems LCD display. Patented Everglades power sliding windshield and power forward table. Packed with fishing features including in-deck fish boxes, lighted live well, bait prep and tackle station, port-side utility door, and more. Ice blue hull color, spacious head and vanity/sink inside console, custom canvas wings at console, full cushion package with forward sun pad.

Basic Information

Category: Boats

Sub Category: Center Console

Model Year: 2011

Year Built: 2011

Country: United States

Dimensions

LOA: 32' 4" (9.86mm)

Beam: 10.66

Speed, Capacities and Weight

Cruise Speed: 30 Knots Kts. (35 MPH) **Max Speed:** 56 Knots Kts. (64 MPH)

Water Capacity: 35 Gallons

Holding Tank: 9 Gal Gallons

Fuel Capacity: 306 Gal Gallons

Accommodations

Total Heads: 1

Hull and Deck Information

Hull Material: Fiberglass

Engine Information

Engines: 2

Manufacturer: Yamaha

Engine Type: Outboard

Fuel Type: Gas

PHOTOS

2



3



4



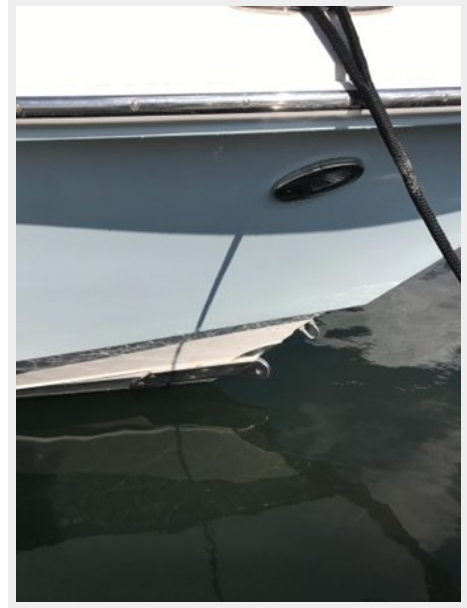
5



6



7



8



9



10



11



12



13



14



15



16



17



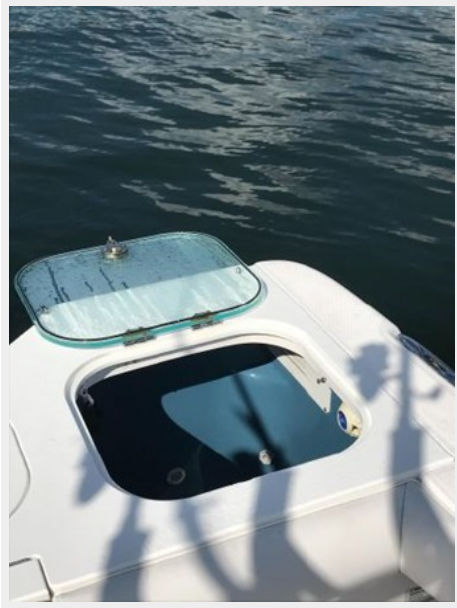
18



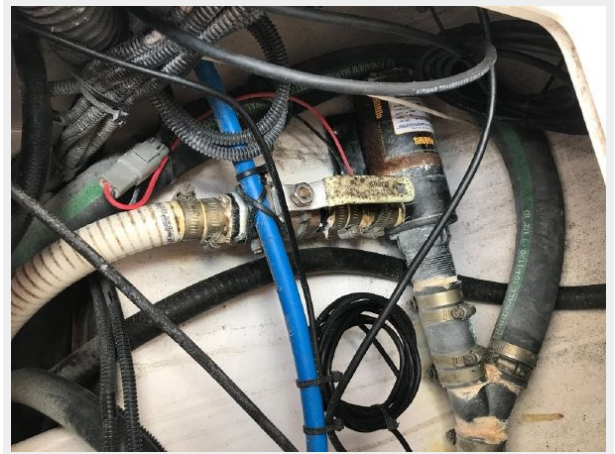
19



20



21



22



23



24



25



26



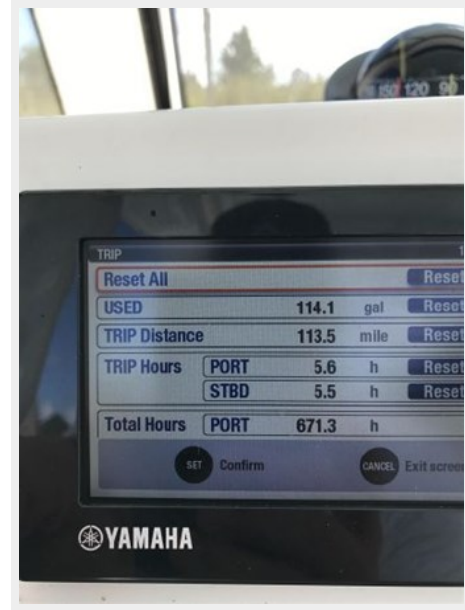
27



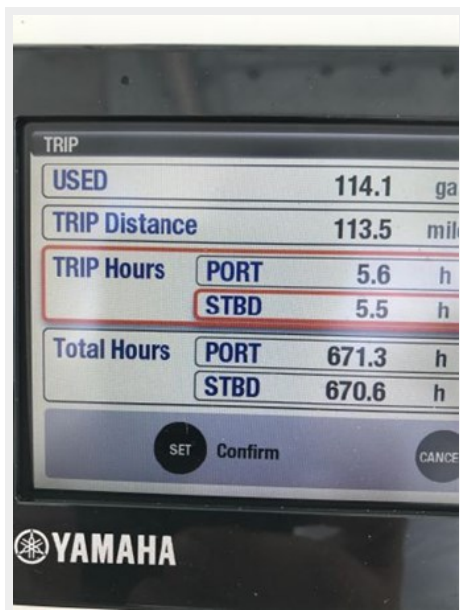
28



29



30



31



32



33



34



35



36



37



38



39



40



41



42



43



44



45



46



47



48



49



50



51



52



CONTACTS

Andrey Shestakov, leading yacht broker of the sales department of Shestakov Yacht Sales Inc. Shestakov Yacht Sales Inc., the official representative of the Miami/Fort Lauderdale FL headquarters.

Contact details

Email: **andrey@shestakovyachtsales.com**

Web: shestakovyachtsales.com/en/

Telephones

USA: **+1(954)274-4435**

Office hours

Monday – Saturday: **9:00 - 21:00** EDT

Sunday: **closed**

Address



Harbour Towne Marina, 850 NE 3rd St, STE 213, Dania, FL 33004