

BONNIE LASS — BENETEAU



Builder: BENETEAU

Year Built: 2007

Model: Cruising Sailboat

Price: PRICE ON APPLICATION

Location: United States

LOA: 32' 10" (10.01mm)

Beam: 10.75

Min Draft: 2' 9" (0.84mm)

Max Draft: 7' (2.13mm)

Our experienced yacht broker, Andrey Shestakov, will help you choose and buy a yacht that best suits your needs **Bonnie Lass — BENETEAU** from our catalogue. Presently, at Shestakov Yacht Sales Inc., we have a wide variety of yachts available on our sale's list. We also work in close contact with all the big yacht manufacturers from all over the world.

If you would like to buy a yacht **Bonnie Lass — BENETEAU** or would like help answering any questions concerning purchasing, selling or chartering a yacht, please call **+1(954)274-4435**

TABLE OF CONTENTS

TABLE OF CONTENTS	2
SPECIFICATIONS	4
Overview	4
Basic Information	4
Dimensions	4
Speed, Capacities and Weight	4
Accommodations	5
Hull and Deck Information	5
Engine Information	5
PHOTOS	6
2	6
3	6
4	6
5	6
6	7
7	7
8	7
9	7
10	7
11	7
12	8
13	8
14	8
15	8
16	9
17	9
18	9
19	9

20	10
21	10
23	10
22	10
24	11
25	11
26	11
27	11
28	12
29	12
31	12
30	12
32	12
CONTACTS	13
Contact details	13
Telephones	13
Office hours	13
Address	13

SPECIFICATIONS

Overview

This listing is available for virtual and in person tours, please contact the listing broker to schedule an appointment Bonnie Lass is a 2007 Beneteau 323 with a swing keel. She is unlike any boat that you will see in this size range. She has been rigged to cruise and with a 2'9" draft with the keel up, you can get into some very shallow water. She features a full electronics package that includes, Garmin Speed, Depth, Wind, Plotter, HD Radar and a Raymarine Autopilot. She also has an in-mast furling main sail and furling genoa with a spinnaker. An excellent anchor, windlass, dodger, bimini, connector and solar panels offer endless possibilities and cruising grounds. Call for an appointment to see Bonnie Lass today!

Basic Information

Category: Cruising Sailboat

Sub Category: Sloop

Model Year: 2007

Year Built: 2007

Country: United States

Dimensions

LOA: 32' 10" (10.01mm)

LWL: 29' 2" (8.89mm)

Beam: 10.75

Min Draft: 2' 9" (0.84mm)

Max Draft: 7' (2.13mm)

Speed, Capacities and Weight

Water Capacity: 42 Gallons

Holding Tank: 13 Gal Gallons

Fuel Capacity: 17 Gal Gallons

Accommodations

Total Cabins: 1

Total Heads: 1

Hull and Deck Information

Hull Material: Fiberglass

Hull Designer: Groupe Finot

Engine Information

Engines: 1

Manufacturer: Yanmar

Engine Type: Inboard

Fuel Type: Diesel

PHOTOS

2



3



4



5



6



7



8



9



10



11



12



13



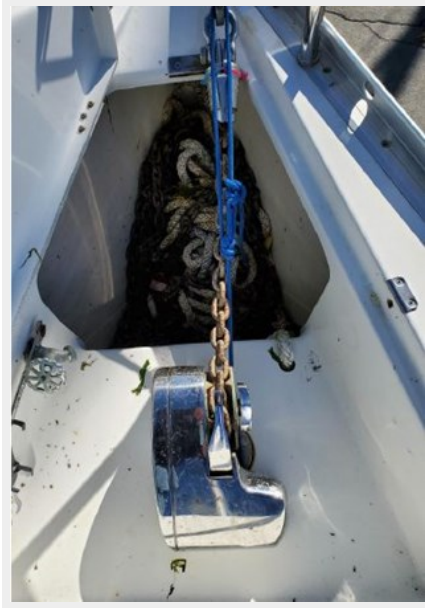
14



15



16



17



18



19



20



21



22



23



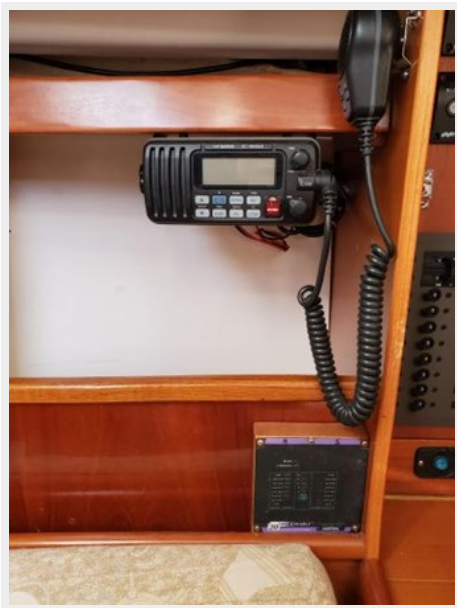
24



25



26



27



28



29



30



31



32



CONTACTS

Andrey Shestakov, leading yacht broker of the sales department of Shestakov Yacht Sales Inc. Shestakov Yacht Sales Inc., the official representative of the Miami/Fort Lauderdale FL headquarters.

Contact details

Email: andrey@shestakovyachtsales.com

Web: shestakovyachtsales.com/en/

Telephones

USA: +1(954)274-4435

Office hours

Monday – Saturday: **9:00 - 21:00** EDT

Sunday: **closed**

Address



Harbour Towne Marina, 850 NE 3rd St,
STE 213, Dania, FL 33004