

## ANCHOR MANAGEMENT — CABO



**Builder:** CABO

**Year Built:** 2000

**Model:** Sport Fisherman

**Price:** PRICE ON APPLICATION

**Location:** United States

**LOA:** 31' (9.45mm)

**Beam:** 12.41

**Max Draft:** 3' 2" (0.97mm)

**Cruise Speed:** 28 Knots Kts. (32 MPH)

Our experienced yacht broker, Andrey Shestakov, will help you choose and buy a yacht that best suits your needs **Anchor Management — CABO** from our catalogue. Presently, at Shestakov Yacht Sales Inc., we have a wide variety of yachts available on our sale's list. We also work in close contact with all the big yacht manufacturers from all over the world.

If you would like to buy a yacht **Anchor Management — CABO** or would like help answering any questions concerning purchasing, selling or chartering a yacht, please call **+1(954)274-4435**

# TABLE OF CONTENTS

TABLE OF CONTENTS	2
SPECIFICATIONS	5
Overview	5
Basic Information	5
Dimensions	5
Speed, Capacities and Weight	5
Accommodations	6
Hull and Deck Information	6
Engine Information	6
PHOTOS	7
2	7
3	7
4	7
5	7
6	8
7	8
8	8
9	8
10	9
11	9
12	9
13	9
14	9
15	9
16	10
17	10
18	10
19	10

---

20	11
21	11
22	11
23	11
24	12
25	12
27	12
26	12
29	13
28	13
31	13
30	13
33	14
32	14
34	14
35	14
36	15
37	15
38	15
39	15
40	16
41	16
42	16
43	16
44	17
45	17
46	17
47	17
48	18

---

---

49	18
50	18
51	18
52	19
53	19
54	19
55	19
56	20
57	20
58	20
59	20
60	21
CONTACTS	22
Contact details	22
Telephones	22
Office hours	22
Address	22

---

# SPECIFICATIONS

---

## Overview

---

This listing is available for virtual and in person tours, please contact the listing broker to schedule an appointment. Love the 31 Cabo but you don't want CAT power? Here's your chance.... The Hull Number might say 2000, but not much else does! Ice blue hull color with navy blue boot stripe, full tower and newer tinted canvas enclosure. Practically New everything, including new (remanufactured) Cummins QSB 440 Common Rail motors with under 100 hours with warranty until June 2020. New transmissions & new shafts with 4-blade Nibral props. Newer diesel generator with 81 hours. All new electronic Glendinning single lever controls at both stations, New Raymarine hybrid-touch electronics package with dual 12" displays, and a 9" display on the tower. 4' Super HD digital Open array radar, Autopilot, new LED under-gunnel cockpit lights and LED underwater lights.

## Basic Information

---

**Category:** Sport Fisherman

**Model Year:** 2000

**Year Built:** 2000

**Country:** United States

## Dimensions

---

**LOA:** 31' (9.45mm)

**Beam:** 12.41

**Max Draft:** 3' 2" (0.97mm)

## Speed, Capacities and Weight

---

**Cruise Speed:** 28 Knots Kts. (32 MPH)

**Water Capacity:** 50 Gallons

**Fuel Capacity:** 320 Gal Gallons

---

## Accommodations

---

**Total Cabins:** 1

**Total Berths:** 4

**Total Heads:** 1

---

## Hull and Deck Information

---

**Hull Material:** Fiberglass

**Hull Configuration:** Deep Vee

**Hull Designer:** Lou Codega

---

## Engine Information

---

**Engines:** 2

**Manufacturer:** Cummins

**Engine Type:** Inboard

**Fuel Type:** Diesel

# PHOTOS

2



3



4



5



6



7



8



9





10



11



12



13



14



15



16



17



18



19



20



21



22



23



24



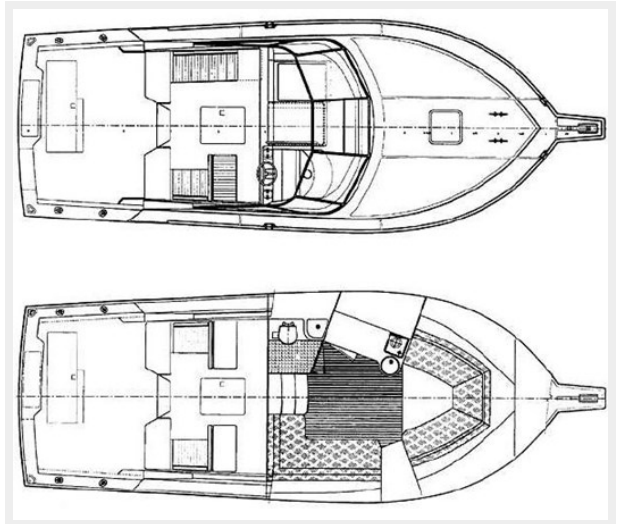
25



26



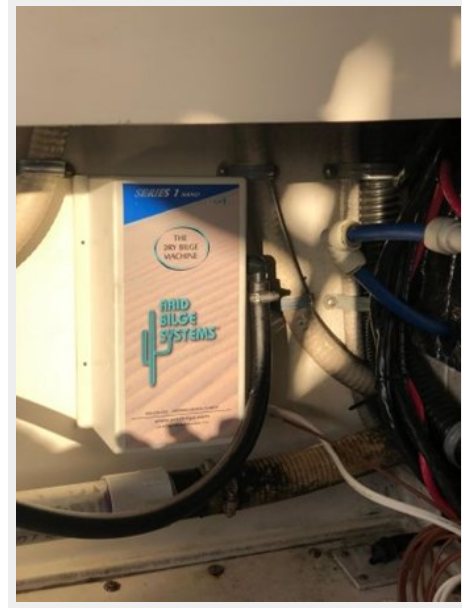
27



28



29



31



30



32



33



34



35



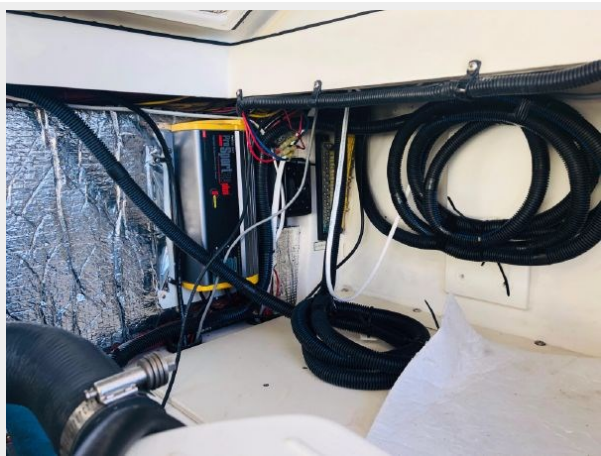
36



37



38



39



40



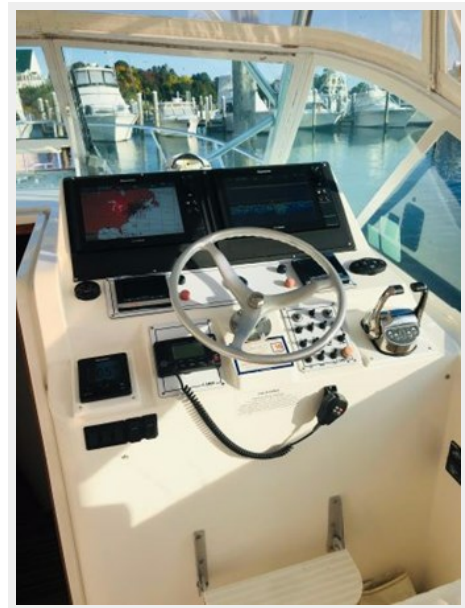
41



42



43





44



45



46



47



48



49



50



51



52



53



54



55



56



57



58



59



60



# CONTACTS

---

Andrey Shestakov, leading yacht broker of the sales department of Shestakov Yacht Sales Inc. Shestakov Yacht Sales Inc., the official representative of the Miami/Fort Lauderdale FL headquarters.

## Contact details

---

Email: [andrey@shestakovyachtsales.com](mailto:andrey@shestakovyachtsales.com)

Web: [shestakovyachtsales.com/en/](http://shestakovyachtsales.com/en/)

## Telephones

---

USA: +1(954)274-4435

## Office hours

---

Monday – Saturday: **9:00 - 21:00** EDT

Sunday: **closed**

## Address

---



Harbour Towne Marina, 850 NE 3rd St,  
STE 213, Dania, FL 33004