

NOETA — NIELSON



Builder: NIELSON

Year Built: 1960

Model: Yawl

Price: PRICE ON APPLICATION

Location: United States

LOA: 30' (9.14mm)

Beam: 8.5

Min Draft: 3' 6" (1.07mm)

Our experienced yacht broker, Andrey Shestakov, will help you choose and buy a yacht that best suits your needs **Noeta — NIELSON** from our catalogue. Presently, at Shestakov Yacht Sales Inc., we have a wide variety of yachts available on our sale's list. We also work in close contact with all the big yacht manufacturers from all over the world.

If you would like to buy a yacht **Noeta — NIELSON** or would like help answering any questions concerning purchasing, selling or chartering a yacht, please call **+1(954)274-4435**

TABLE OF CONTENTS

TABLE OF CONTENTS	2
SPECIFICATIONS	4
Overview	4
Basic Information	4
Dimensions	4
Speed, Capacities and Weight	4
Accommodations	4
Hull and Deck Information	5
Engine Information	5
PHOTOS	6
3	6
2	6
4	6
5	6
6	7
7	7
8	7
9	7
10	8
11	8
12	8
13	8
14	9
15	9
16	9
17	9
18	9
19	9

20	10
CONTACTS	11
Contact details	11
Telephones	11
Office hours	11
Address	11

SPECIFICATIONS

Overview

*This listing is available for virtual and in person tours, please contact the listing broker to schedule an appointment*NOETA is a beautiful K. Aage Nielsen designed CCA-era centerboard yawl built in Denmark in 1960. Neilsen made his name on designing fast, stable and seaworthy shoal draft centerboard boats perfect for racing or cruising and NOETA is a perfect example of that. She has been well maintained and comes with an extensive racing pedigree. Many classic yacht touches including beautiful custom hardware. Current owner has hauled the boat each winter and the spars have been unstepped and rigging inspected. She is mahogany planked over laminated white oak frames. Deck is plywood covered in Dynel fabric. The current survey on the boat is from 2014

Basic Information

Category: Yawl

Model Year: 1960

Year Built: 1960

Country: United States

Dimensions

LOA: 30' (9.14mm)

LWL: 21' (6.4mm)

Beam: 8.5

Min Draft: 3' 6" (1.07mm)

Speed, Capacities and Weight

Water Capacity: 40 Gallons

Fuel Capacity: 161 Gal Gallons

Accommodations

Total Cabins: 1

Total Heads: 1

Hull and Deck Information

Hull Material: Wood

Engine Information

Engines: 1

Manufacturer: westerbeke

Engine Type: Inboard

Fuel Type: Diesel

PHOTOS

2



3



4



5



6



7



8



9



10



11



12



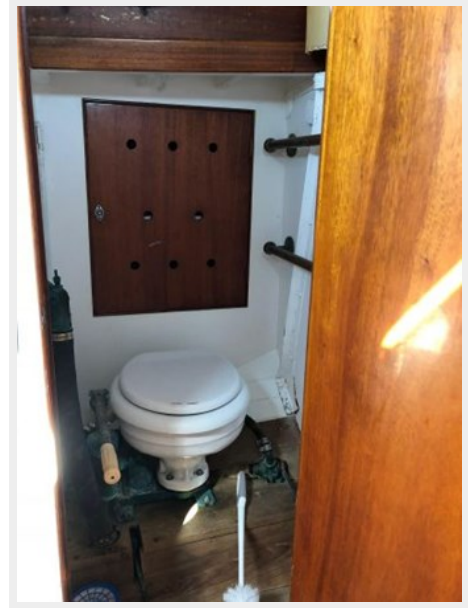
13



14



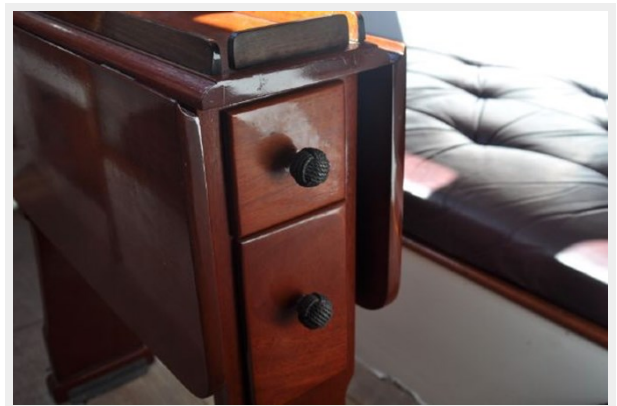
15



16



17



18



19



20



CONTACTS

Andrey Shestakov, leading yacht broker of the sales department of Shestakov Yacht Sales Inc. Shestakov Yacht Sales Inc., the official representative of the Miami/Fort Lauderdale FL headquarters.

Contact details

Email: andrey@shestakovyachtsales.com

Web: shestakovyachtsales.com/en/

Telephones

USA: +1(954)274-4435

Office hours

Monday – Saturday: **9:00 - 21:00** EDT

Sunday: **closed**

Address



Harbour Towne Marina, 850 NE 3rd St,
STE 213, Dania, FL 33004