

NOMAD — EASTERN BOATS



Builder: EASTERN BOATS

Year Built: 2015

Model: Sport Fisherman

Price: **PRICE ON APPLICATION**

Location: United States

LOA: 27' 4" (8.33mm)

Beam: 10.25

Max Draft: 2' 4" (0.71mm)

Cruise Speed: 20 Knots Kts. (23 MPH)

Max Speed: 28 Knots Kts. (32 MPH)

Our experienced yacht broker, Andrey Shestakov, will help you choose and buy a yacht that best suits your needs **Nomad — EASTERN BOATS** from our catalogue. Presently, at **Shestakov Yacht Sales Inc.**, we have a wide variety of yachts available on our sale's list. We also work in close contact with all the big **yacht manufacturers** from all over the world.

If you would like to buy a yacht **Nomad — EASTERN BOATS** or would like help answering any questions concerning purchasing, selling or chartering a yacht, please call **+1(954)274-4435**

TABLE OF CONTENTS

TABLE OF CONTENTS	2
SPECIFICATIONS	5
Overview	5
Basic Information	5
Dimensions	5
Speed, Capacities and Weight	6
Accommodations	6
Hull and Deck Information	6
Engine Information	6
PHOTOS	7
3	7
2	7
4	7
5	7
7	8
6	8
8	8
9	8
10	9
11	9
13	9
12	9
14	10
15	10
16	10
17	10
18	11
19	11

20	11
21	11
22	12
23	12
24	12
25	12
26	12
27	12
28	13
29	13
30	13
31	13
32	13
33	13
35	14
34	14
36	14
37	14
38	15
39	15
40	15
41	15
43	16
42	16
44	16
45	16
47	17
46	17
48	17

49	17
50	18
51	18
52	18
53	18
54	19
55	19
57	19
56	19
58	20
59	20
60	20
61	20
62	21
63	21
CONTACTS	22
Contact details	22
Telephones	22
Office hours	22
Address	22

SPECIFICATIONS

Overview

** Recent \$10k price improvement, offers encouraged **This listing is available for virtual and in person tours, please contact the listing broker to schedule an appointment.NOMAD represents an economical and roomy Lobster Cruiser with shallow draft and single fuel efficient Electronic Controlled [fly by wire] Honda BF250 Outboard and Sidepower Bow Thruster. She has an Armstrong Bracket with full width swim platform. Her performance and economy will surprise you with top speeds in the 30kt range and cruise at 18-20 Kts. You will be in full control with her integrated NMEA 2000 engine monitoring and Garmin's latest 10" display with sounder, radar and full featured chart plotter with cartography. Garmin's and Honda's techs set up this boat and she is turn key .She is equipped with a Vacuflush Head with 30 gallon Holding capacity. The freshwater capacity is 30 GallonsThere are twin 96 Gallon fuel tanks with a valve for an enormous cruising range.There is a large under cockpit berth that's perfect for kids, dogs or storage for cruising applications.There are cockpit steps on the port and stbd. sides for easy entry and exit as well as an Armstrong Dive Ladder on the full width Armstrong Bracket for easy swimming and diving opportunities.She has Ultra Leather upholstery as well as a Bow Thruster and Lewmar windlass, opening front windows and 10" roof ventilation hatches in Helm area.She is equipped with a 3 panel canvas cabin back enclosure with Isinglass.The helm deck Galley has a freshwater sink and a Dometic Norcold fridge

Basic Information

Category: Sport Fisherman

Model Year: 2015

Year Built: 2015

Country: United States

Dimensions

LOA: 27' 4" (8.33mm)

Beam: 10.25

Max Draft: 2' 4" (0.71mm)

Speed, Capacities and Weight

Cruise Speed: 20 Knots Kts. (23 MPH) **Max Speed:** 28 Knots Kts. (32 MPH)

Water Capacity: 30 Gallons

Holding Tank: 30 Gal Gallons

Fuel Capacity: 96 Gal Gallons

Accommodations

Total Cabins: 2

Total Berths: 2

Total Heads: 1

Hull and Deck Information

Hull Material: Fiberglass

Engine Information

Engines: 1

Manufacturer: Honda

Engine Type: Outboard

Fuel Type: Gas

PHOTOS

2



3



4



5



6



7



8



9



10



11



12



13



14



15



16



17



18



19



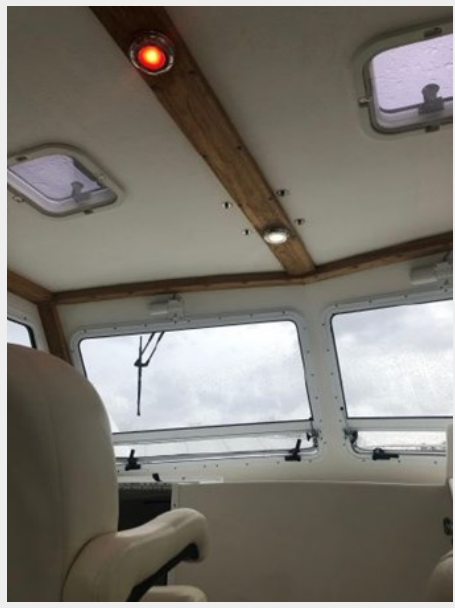
20



21



22



23



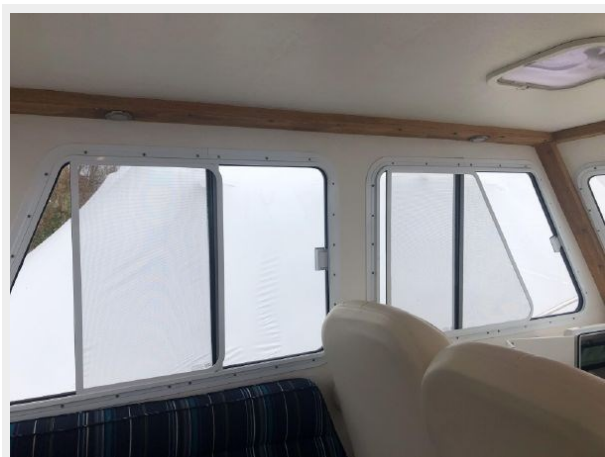
24



25



26



27



28



29



30



31



32



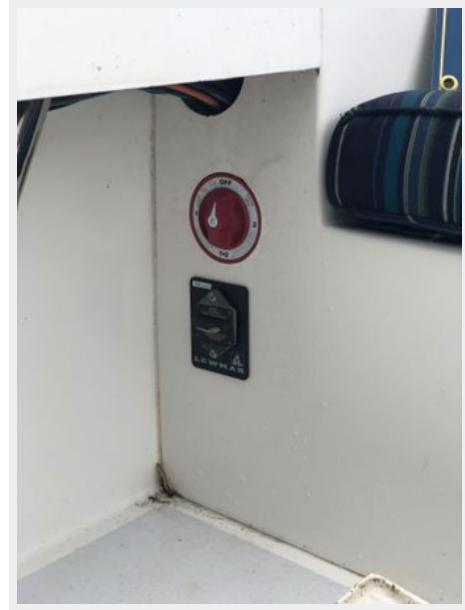
33



34



35



36



37



38



39



40



41



42



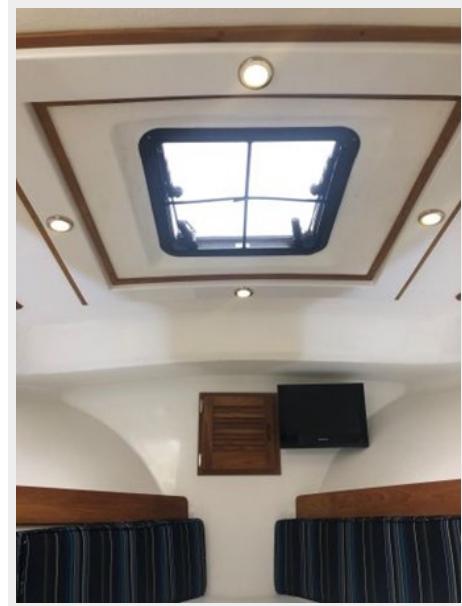
43



44



45



46



47



48



49



50



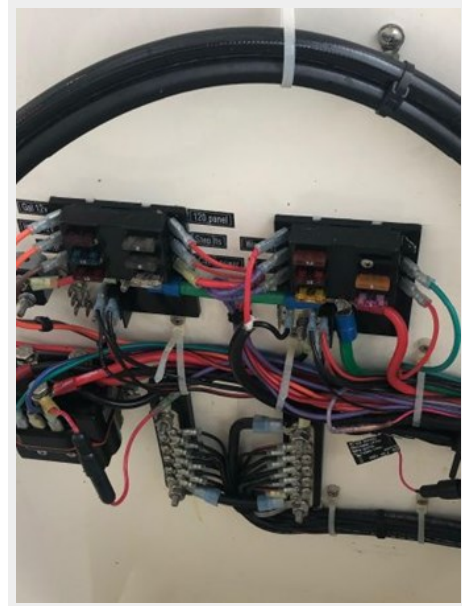
51



52



53



54



55



56



57



58



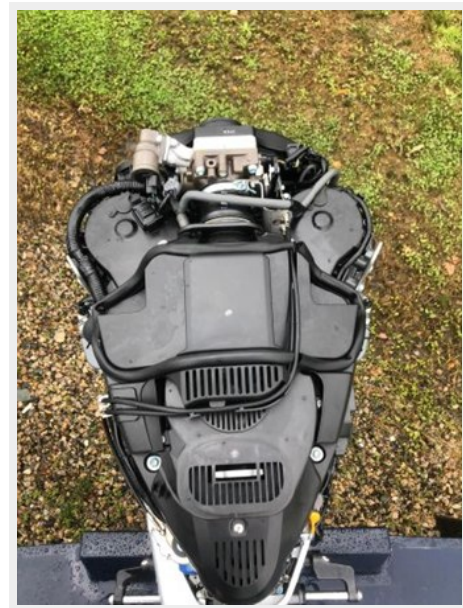
59



60



61



62



63



CONTACTS

Andrey Shestakov, leading yacht broker of the sales department of Shestakov Yacht Sales Inc. Shestakov Yacht Sales Inc., the official representative of the Miami/Fort Lauderdale FL headquarters.

Contact details

Email: **andrey@shestakovyachtsales.com**

Web: shestakovyachtsales.com/en/

Telephones

USA: **+1(954)274-4435**

Office hours

Monday – Saturday: **9:00 - 21:00** EDT

Sunday: **closed**

Address



Harbour Towne Marina, 850 NE 3rd St, STE 213, Dania, FL 33004