

## KUKLA — SUNREEF



**Builder:** [SUNREEF](#)

**Year Built:** 2017

**Model:** Motor Yacht

**Price:** PRICE ON APPLICATION

**Location:** Spain

**LOA:** 67' 2" (20.45m)

**Beam:** 34.44

**Max Draft:** 3' 8" (1.1m)

**Max Speed:** 20 Knots Kts. (23 MPH)

Our experienced yacht broker, Andrey Shestakov, will help you choose and buy a yacht that best suits your needs **KUKLA — SUNREEF** from our catalogue. Presently, at Shestakov Yacht Sales Inc., we have a wide variety of yachts available on our sale's list. We also work in close contact with all the big yacht manufacturers from all over the world.

If you would like to buy a yacht **KUKLA — SUNREEF** or would like help answering any questions concerning purchasing, selling or chartering a yacht, please call **+1(954)274-4435**

# TABLE OF CONTENTS

TABLE OF CONTENTS	2
SPECIFICATIONS	4
Overview	4
Basic Information	6
Dimensions	6
Speed, Capacities and Weight	6
Accommodations	6
Hull and Deck Information	6
Engine Information	7
PHOTOS	8
Sunreef 68 Power Yacht For Sale 4-min	8
Sunreef 68 Power Yacht For Sale 25-min	8
Sunreef 68 Power Yacht For Sale 30-min	8
Sunreef 68 Power Yacht For Sale 26-min	8
Sunreef 68 Power Yacht For Sale 13-min	8
Sunreef 68 Power Yacht For Sale 29-min	8
Sunreef 68 Power Yacht For Sale 28-min	9
Sunreef 68 Power Yacht For Sale 27-min	9
Sunreef 68 Power Yacht For Sale 12-min	9
Sunreef 68 Power Yacht For Sale 23-min	9
Sunreef 68 Power Yacht For Sale 22-min	9
Sunreef 68 Power Yacht For Sale 9-min	9
Sunreef 68 Power Yacht For Sale 2-min	10
Sunreef 68 Power Yacht For Sale 1-min	10
Sunreef 68 Power Yacht For Sale 11-min	10
Sunreef 68 Power Yacht For Sale 7-min	10
Sunreef 68 Power Yacht For Sale 10-min	10
Sunreef 68 Power Yacht For Sale 5-min	10

---

Sunreef 68 Power Yacht For Sale 6-min	11
CONTACTS	12
Contact details	12
Telephones	12
Office hours	12
Address	12

---

# SPECIFICATIONS

---

## Overview

---

2017 Sunreef Supreme 68 Power Yacht for sale! Built by award-winning shipyard Sunreef, this 68 ft power catamaran has a total living space of 302 sqm, has 4 spacious cabins, low engine hours, and is in excellent condition.

### FULL OPTIONS LIST

#### MECHANICS

2 x complete engine (VOLVO)Stainless steel shaftsFuel tank: 7,000 Litres + 2 x Extra 500 Liters Modular for Transatlantic RangeRope cutters on the propeller shafts1 engine speed controls (on flybridge) + extra engine instrumentsFuel filter with water separator in engine and generator fuel delivery line Fuel consumption estimation system

#### DECK GEAR

Hydraulic gangwayPort lights with big side windows2 x swim ladderBimini on flybridge with 6 lights Customized Bimini structureBimini clear view surrounding windshield

#### ELECTRICAL SYSTEMS

Upgraded electric kit: AC-230V 50Hz 1PH 2 x chargers (24V/100A)2 x shore power inlet 63AInverter (220V/ 50Hz/ 5000W)3 x sockets in cabins, 4 sockets in saloon, 4 in dining area, 4 in galley 50/60Hz shore connection kitASEA frequency converterAdditional Inverter (230V/ 50Hz/ 5000W)2 x alternators 24V, 75A eachGenerators: 2 x 17.5 KVA Cummins OnanDinghy electric launching system with remote control

#### LIGHTS

Interior lights with LED lampsNavigation lights with LED lampsExterior lighting (LEDs, search light, lights on flybridge)Deck floor lighting (cockpit, stairs, flybridge)Lights in the engine roomDomotic system for lights, controls, and D/C system, including dimmers for ceiling lightsUnderwater lights LED, white or blue

#### NAVIGATION & ELECTRONICS

Compass (size 135mm)Chronometer & barometerSimrad electric pack: 2pcs MFDs 12", radar 4G, autopilot, AIS, depth, speed & temp sensor, GPS, VHF with DSC function (dual station, built in AIS receiver, Hailer/Horn Loudspeaker, Intercom function)

#### NAVIGATION & ELECTRONICS cont

Upgraded Raymarine navigation Extra Raymarine monitor 15.4" on Helm Station in Salon Yacht controller (remote controller for engines, windlass, bow thrusters) 2 x External camera with color & night vision Satellite communication system KVH V3 IP Satellite TV Antenna KVH TV64G/LTE Wifi Antenna Flaps

## PLUMBING

Freshwater: 1 x 1,000 L with level indicator, pressurized pump with stainless steel tank, 2 water heaters of 80 L each Black Water: 1 x 335 L tank discharge system equipped with 3 way valves (discharge in the sea or holding tanks)

Watermaker 280 l/h - 230V 4 x electrical bilge pumps 2 x manual bilge pumps Hand shower on deck Electric toilets 24V in bathrooms with fresh water flush Fresh water inlet

Fresh water outlet on deck Additional bilge pump in both forepeaks

## COMFORT ON BOARD

Air conditioning (Frigomar): saloon, cabins, owner bathroom. 124 000 BTU, Heating (reverse cycle) works when the temperature of the water is higher than 5°C Galley equipment: Refrigerator with freezer, microwave, electric 2-burner stove, dishwasher, cooker hood

Electrically recessed blinds on front windows in saloon & master cabin, manual blinds in guest cabins 1 x LED TV 75" Samsung (saloon) 1 x LED TV 40"

1 x Apple wireless system/ Apple TV 2 x lifting system (up/down) for TV 4 x waterproof speakers (flybridge) Heos by Denon Surround Sound System 5.1 2 x waterproof speakers in front area & 2 in aft cockpit Washing machine & dryer with complete installation Additional refrigerator for drinks in salon

2 x ice makers 1 x wine cooler (32 bottles) Flybridge cushions set & flybridge mattress Foredeck sunbath mattresses Flybridge bar module with sink Stainless steel BBQ Jacuzzi

## SAFETY EQUIPMENT

Manual fire extinguisher system in engine rooms Complete rescue equipment with liferafts for 12 ppl Adaptation to Commercial Requirements, Malta Commercial Code 2015 M An overboard system with AIS system

## MOORINGS & TOOLS

Windlass 24V DELTA Anchor 63 kg + 80m chain (13mm diameter) DELTA Anchor 20kg + 20m galvanised chain (10mm) 8 x fenders 4 x mooring ropes 50m tow line 2 x aft mooring capstans Quick Rudders Steering Wheel Hydraulic steering system 2 x emergency tillers Self-aligning lower and top bearings

## ADDITIONAL

Outside day head with extractor  
Shower head on cockpit with mixing valve  
Full insulation in engine rooms  
Extra insulation in master cabin  
Outdoor/waterproof TV 47"  
Reversible transfer fuel pump  
Mooring monitor/camera aft  
Electric pump for engine oil change (both engines)  
Antifouling

## Basic Information

---

**Category:** Motor Yacht

**Model Year:** 2017

**Year Built:** 2017

**Country:** Spain

## Dimensions

---

**LOA:** 67' 2" (20.45mm)

**Beam:** 34.44

**Max Draft:** 3' 8" (1.1mm)

## Speed, Capacities and Weight

---

**Max Speed:** 20 Knots Kts. (23 MPH)

**Water Capacity:** 1000 Gallons

**Fuel Capacity:** 2113.38 Gal Gallons

## Accommodations

---

**Total Cabins:** 4

**Sleeps:** 8

**Total Heads:** 5

**Crew Cabin:** 2

**Crew Berths:** 2

**Crew Heads:** 1

## Hull and Deck Information

---

**Hull Material:** Advanced Composites

---

## Engine Information

---

**Engines:** 2

**Manufacturer:** Volvo

**Engine Type:** Inboard

**Fuel Type:** Diesel

# PHOTOS

**Sunreef 68 Power Yacht For Sale 4-min**



**Sunreef 68 Power Yacht For Sale 25-min**



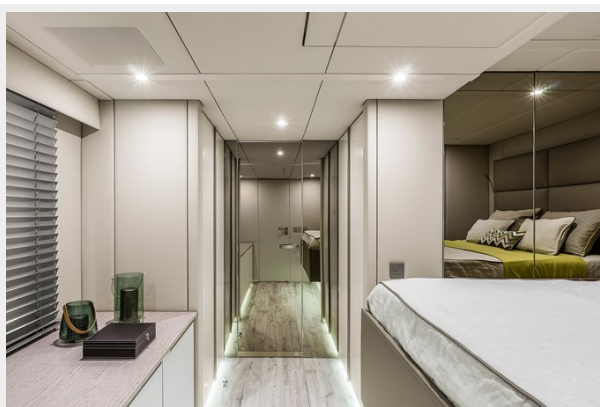
**Sunreef 68 Power Yacht For Sale 30-min**



**Sunreef 68 Power Yacht For Sale 26-min**



**Sunreef 68 Power Yacht For Sale 13-min**



**Sunreef 68 Power Yacht For Sale 29-min**





**Sunreef 68 Power Yacht For Sale 28-min**



**Sunreef 68 Power Yacht For Sale 27-min**



**Sunreef 68 Power Yacht For Sale 12-min**



**Sunreef 68 Power Yacht For Sale 23-min**



**Sunreef 68 Power Yacht For Sale 22-min**



**Sunreef 68 Power Yacht For Sale 9-min**



**Sunreef 68 Power Yacht For Sale 2-min**



**Sunreef 68 Power Yacht For Sale 1-min**



**Sunreef 68 Power Yacht For Sale 11-min**



**Sunreef 68 Power Yacht For Sale 7-min**



**Sunreef 68 Power Yacht For Sale 10-min**



**Sunreef 68 Power Yacht For Sale 5-min**



## Sunreef 68 Power Yacht For Sale 6-min



# CONTACTS

---

Andrey Shestakov, leading yacht broker of the sales department of Shestakov Yacht Sales Inc. Shestakov Yacht Sales Inc., the official representative of the Miami/Fort Lauderdale FL headquarters.

## Contact details

---

Email: [andrey@shestakovyachtsales.com](mailto:andrey@shestakovyachtsales.com)

Web: [shestakovyachtsales.com/en/](http://shestakovyachtsales.com/en/)

## Telephones

---

USA: +1(954)274-4435

## Office hours

---

Monday – Saturday: **9:00 - 21:00** EDT

Sunday: **closed**

## Address

---



Harbour Towne Marina, 850 NE 3rd St,  
STE 213, Dania, FL 33004