

## NOVELA — CBI NAVI



**Builder:** CBI NAVI

**Year Built:** 2000

**Model:** Motor Yacht

**Price:** PRICE ON APPLICATION

**Location:** Croatia

**LOA:** 100' 5" (30.6mm)

**Beam:** 23.62

**Max Draft:** 7' 3" (2.2mm)

**Cruise Speed:** 12 Knots Kts. (14 MPH)

**Max Speed:** 15 Knots Kts. (17 MPH)

Our experienced yacht broker, Andrey Shestakov, will help you choose and buy a yacht that best suits your needs **Novela — CBI NAVI** from our catalogue. Presently, at Shestakov Yacht Sales Inc., we have a wide variety of yachts available on our sale's list. We also work in close contact with all the big yacht manufacturers from all over the world.

If you would like to buy a yacht **Novela — CBI NAVI** or would like help answering any questions concerning purchasing, selling or chartering a yacht, please call **+1(954)274-4435**

# TABLE OF CONTENTS

TABLE OF CONTENTS	2
SPECIFICATIONS	4
Overview	4
Basic Information	5
Dimensions	5
Speed, Capacities and Weight	5
Accommodations	5
Hull and Deck Information	5
Engine Information	6
PHOTOS	7
2	7
3	7
4	7
5	7
6	7
7	7
NOVELA-YACHT-IYC-SALON4	8
NOVELA-YACHT-IYC-SALON	8
NOVELA-YACHT-IYC-SALON3	8
NOVELA-YACHT-IYC-SALON2	8
11	8
12	8
13	8
14	8
15	9
16	9
17	9
18	9

19	9
20	9
21	9
22	9
23	10
24	10
26	10
25	10
27	10
28	10
29	10
31	10
CONTACTS	11
Contact details	11
Telephones	11
Office hours	11
Address	11

# SPECIFICATIONS

---

## Overview

---

Strong and elegant with opulent touches and large outdoor spaces, 100'5"/30.6m Novela is a versatile, family-friendly yacht with proven success on the charter market. She represents an attractive opportunity for an owner looking for incredible volume, stylish interiors and stability on the high seas. Hosting eight guests and five crew, Novela's outdoor spaces are truly outstanding. Boarding Novela brings you to the spacious aft deck, which can comfortably sit 10 for cocktails around her beautifully designed coffee tables or 12 for formal dining when the coffee tables convert to a large dining table. Her large stern flybridge area hosts a further dining table with an electric sun awing system, BBQ and, to work off the delights of the chef, an elliptical cross trainer with one of the best views in the house. The Jacuzzi, surrounded by a large sunbathing area, invites guests to lie back, take in the sun and chill out. The top deck offers the hidden surprise of a large sun pad, ideal for taking in the beautiful sites in complete privacy. In front of the pilothouse is located a further bow seating area, perfect for enjoying a cocktail while cruising. Forward of this area are a further two huge sun pads located on the bow for soaking up the sun with a little breeze whilst cruising. Built by Italian shipyard CBI Navi in 2000, Novela's original design was crafted by Luca Dini Design. She underwent major refits in 2013 and 2019 overseen by Sasa Milosavljevic, and has enjoyed constant upgrades every other year since to keep all areas in top condition. A steel displacement hull with bulbous bow and aluminum superstructure give Novela great seakeeping capability. An ultra-modern stabilization system reduces roll motion onboard guaranteeing optimized comfort for guests both underway and at anchor. With a cruising speed of 12.5 knots (maximum 15 knots) and a range of 3,500 nautical miles, Novela provides the freedom for uninhibited exploration and life-affirming adventure; compact enough to anchor in secluded bays but stable enough to safely tackle rough seas. For indoor socializing, the large, light-filled main salon is a fantastic communal space, with casual seating, a cocktail bar and an entertainment system. The upper deck is home to the pilothouse and a significantly larger sky lounge than those found on comparable sized yachts. Alongside stretching vistas, this space houses relaxed L-shaped seating and a large LED TV that is discreetly integrated for when not in use. Guests will enjoy the versatile layout of the cabins, which can be used as two doubles and two twins, or four doubles. Each room is tastefully decorated with elegant touches, mirrors and large windows providing an abundance of light morning to night. Those keen to leverage Novela's vast array of water equipment will not be disappointed. Her toys include, but are not limited to, kneeboards, wakeboards, skis, mono skis, paddleboards, two SeaBobs, a Fliteboard, two Jet Skis and a hover board for lasting memories and heart-racing adventures. A 7.8m Brigg Eagle tender with her 300hp Mercury Verrado outboard also makes days trips and shore excursions convenient and comfortable. Novela offers the unique opportunity to own a substantial yacht with personality, performance and passion.

## Basic Information

Category: Motor Yacht	Sub Category: Flybridge
Model Year: 2000	Year Built: 2000
Refit Type: INTERIOR	Country: Croatia

## Dimensions

LOA: 100' 5" (30.6mm)	Beam: 23.62
Max Draft: 7' 3" (2.2mm)	

## Speed, Capacities and Weight

Cruise Speed: 12 Knots Kts. (14 MPH)	Cruise Speed Range: 3500
Max Speed: 15 Knots Kts. (17 MPH)	Gross Tonnage: 197 Pounds
Water Capacity: 9000 Gallons	Fuel Capacity: 10333.35 Gal Gallons

## Accommodations

Total Cabins: 4	Sleeps: 8
Crew Cabin: 5	

## Hull and Deck Information

Hull Material: Steel	Exterior Designer: Luca Dini
Interior Designer: Luca Dini	

---

## Engine Information

---

**Engines:** 2

**Manufacturer:** Caterpillar

# PHOTOS

2



3



4



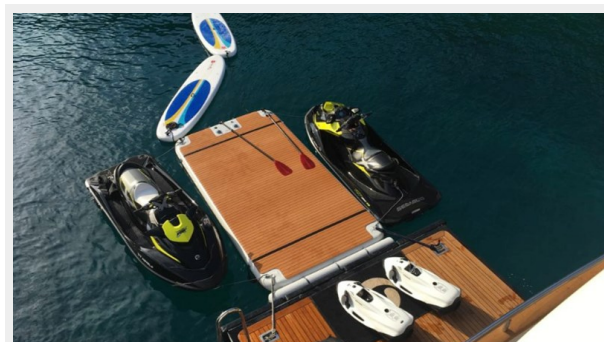
5



6



7



**NOVELA-YACHT-IYC-SALON4**



**NOVELA-YACHT-IYC-SALON**



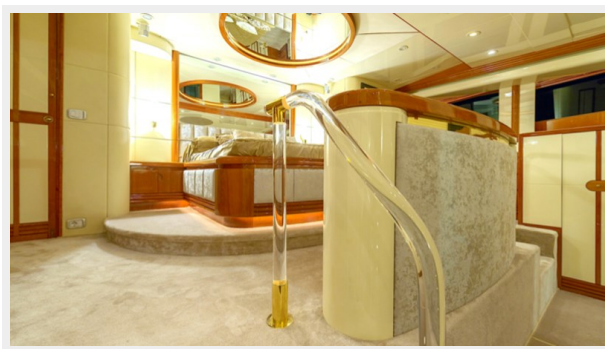
**NOVELA-YACHT-IYC-SALON3**



**NOVELA-YACHT-IYC-SALON2**



**11**



**12**



**13**



**14**



15



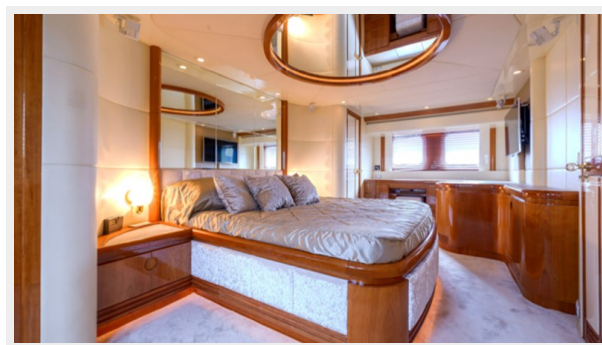
16



17



18



19



20



21



22



23



24



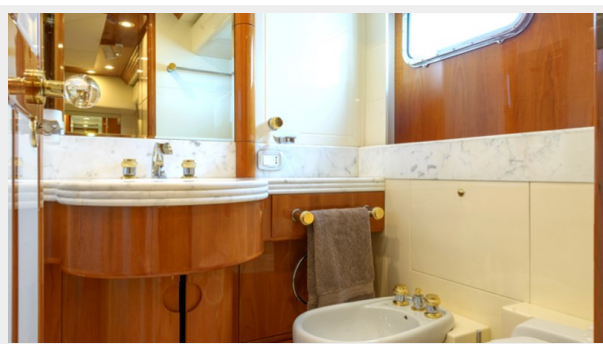
25



26



27



28



29



31



# CONTACTS

---

Andrey Shestakov, leading yacht broker of the sales department of Shestakov Yacht Sales Inc. Shestakov Yacht Sales Inc., the official representative of the Miami/Fort Lauderdale FL headquarters.

## Contact details

---

Email: **andrey@shestakovyachtsales.com**

Web: [shestakovyachtsales.com/en/](http://shestakovyachtsales.com/en/)

## Telephones

---

USA: **+1(954)274-4435**

## Office hours

---

Monday – Saturday: **9:00 - 21:00 EDT**

Sunday: **closed**

## Address

---



Harbour Towne Marina, 850 NE 3rd St,  
STE 213, Dania, FL 33004