

## PAMELA ANNE — GRAND BANKS



**Builder:** GRAND BANKS

**Year Built:** 1973

**Model:** Trawler Yacht

**Price:** PRICE ON APPLICATION

**Location:** United States

**LOA:** 36' (10.97mm)

**Beam:** 12.66

**Max Draft:** 4' (1.22mm)

**Cruise Speed:** 7 Knots Kts. (8 MPH)

**Max Speed:** 9 Knots Kts. (10 MPH)

Our experienced yacht broker, Andrey Shestakov, will help you choose and buy a yacht that best suits your needs **Pamela Anne — GRAND BANKS** from our catalogue. Presently, at Shestakov Yacht Sales Inc., we have a wide variety of yachts available on our sale's list. We also work in close contact with all the big yacht manufacturers from all over the world.

If you would like to buy a yacht **Pamela Anne — GRAND BANKS** or would like help answering any questions concerning purchasing, selling or chartering a yacht, please call **+1(954)274-4435**

# TABLE OF CONTENTS

TABLE OF CONTENTS	2
SPECIFICATIONS	5
Overview	5
Basic Information	5
Dimensions	5
Speed, Capacities and Weight	5
Accommodations	5
Hull and Deck Information	6
Engine Information	6
PHOTOS	7
2	7
1	7
3	7
4	7
5	7
6	7
7	8
8	8
9	8
10	8
11	8
12	8
14	9
13	9
15	9
16	9
17	9
18	9

19	10
20	10
21	10
22	10
24	11
23	11
25	11
26	11
27	12
28	12
30	12
29	12
32	13
31	13
34	13
33	13
35	14
36	14
38	14
37	14
40	15
39	15
41	15
42	15
43	15
44	15
45	16
CONTACTS	17
Contact details	17

---

Telephones	17
Office hours	17
Address	17

---

# SPECIFICATIONS

---

## Overview

---

A beautiful example of a classic Grand Banks, PAMELA ANNE has undergone an extensive re-fit over the last three years including all new tanks, new a/c units, new stainless steel shafts, new heat exchangers and much, much more. She has been completely re-painted top to bottom and inside and out. All her teak has been sanded and six coats of varnish applied. All the new owner has to do is add cushions in the salon and staterooms and she's ready to cruise anywhere!

## Basic Information

---

**Category:** Trawler Yacht

**Model Year:** 1973

**Year Built:** 1973

**Country:** United States

## Dimensions

---

**LOA:** 36' (10.97mm)

**Beam:** 12.66

**Max Draft:** 4' (1.22mm)

## Speed, Capacities and Weight

---

**Cruise Speed:** 7 Knots Kts. (8 MPH)

**Max Speed:** 9 Knots Kts. (10 MPH)

**Water Capacity:** 140 Gallons

**Holding Tank:** 40 Gal Gallons

**Fuel Capacity:** 350 Gal Gallons

## Accommodations

---

**Total Cabins:** 1

**Total Berths:** 5

**Total Heads:** 1

---

## Hull and Deck Information

---

**Hull Material:** Fiberglass

---

## Engine Information

---

**Engines:** 1

**Manufacturer:** Ford

**Engine Type:** Inboard

**Fuel Type:** Diesel

# PHOTOS

1



2



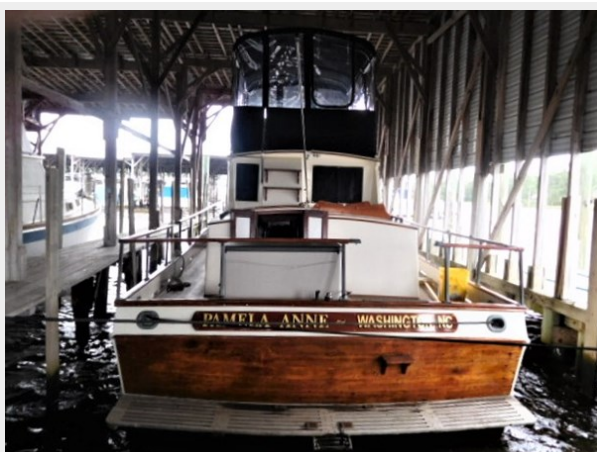
3



4



5



6



7



8



9



10



11



12





13



14



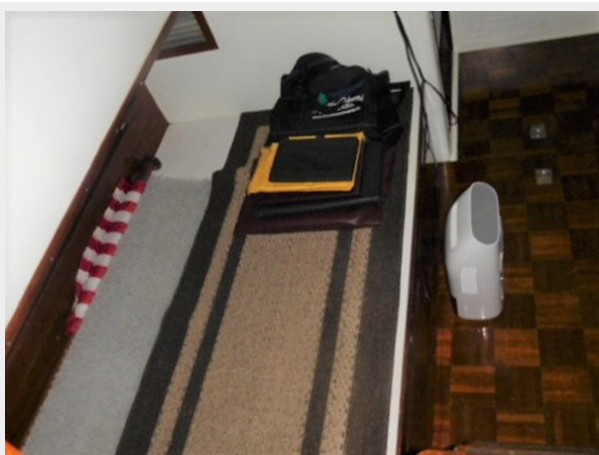
15



16



17



18



19



20



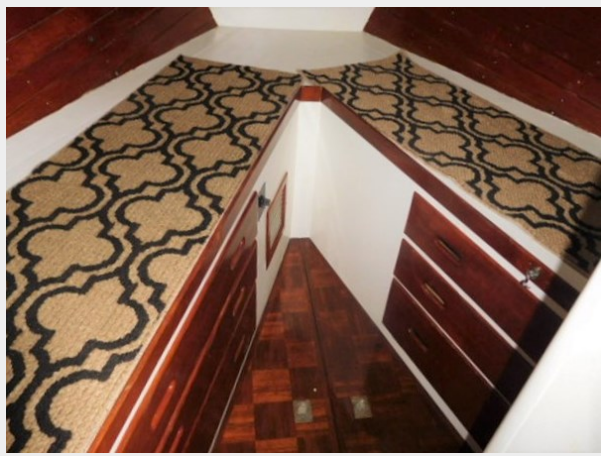
21



22



23



24



25



26



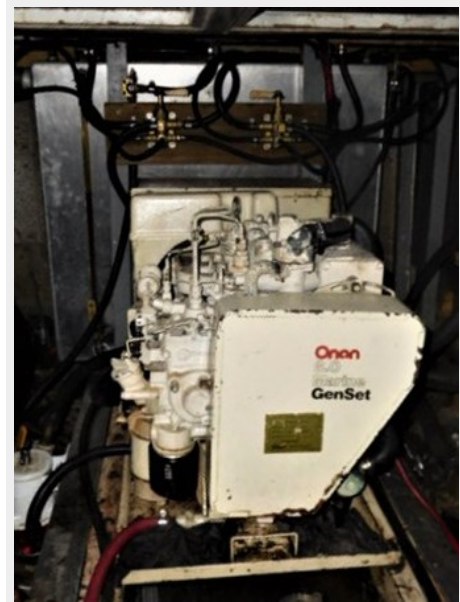
27



28



30



29



31



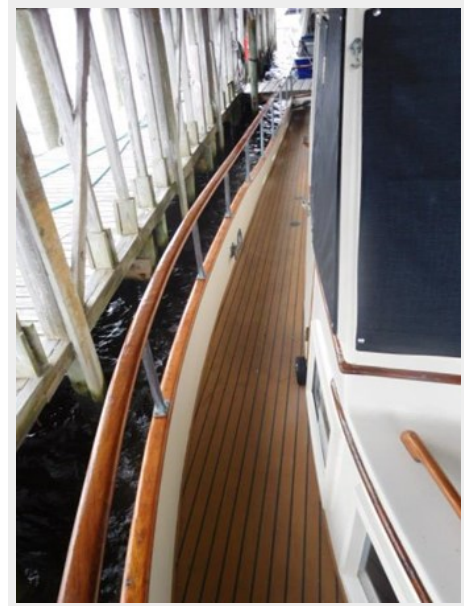
32



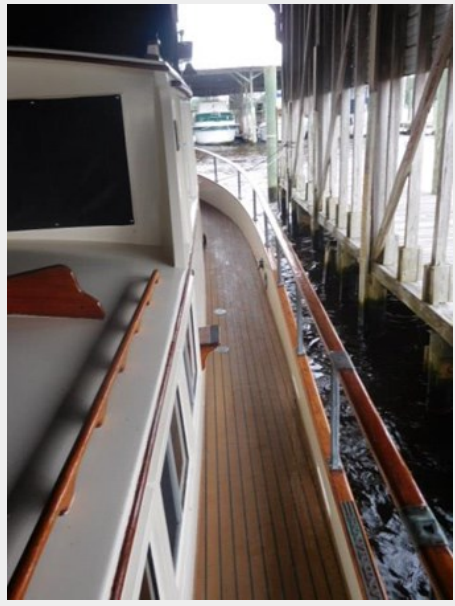
33



34



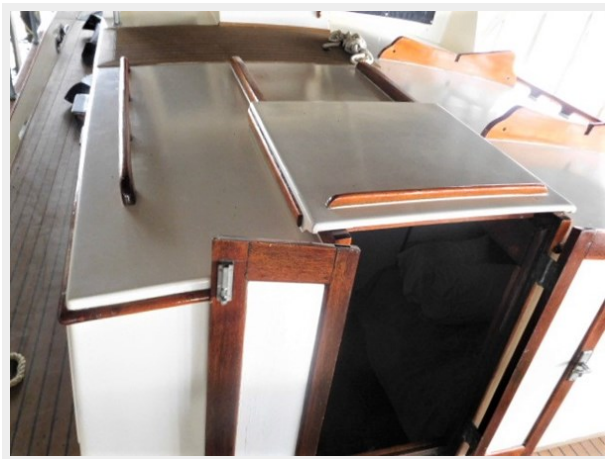
35



36



37



38



39



40



41



42



43



44



45





---

# CONTACTS

---

Andrey Shestakov, leading yacht broker of the sales department of Shestakov Yacht Sales Inc. Shestakov Yacht Sales Inc., the official representative of the Miami/Fort Lauderdale FL headquarters.

---

## Contact details

---

Email: [andrey@shestakovyachtsales.com](mailto:andrey@shestakovyachtsales.com)

Web: [shestakovyachtsales.com/en/](http://shestakovyachtsales.com/en/)

---

## Telephones

---

USA: +1(954)274-4435

---

## Office hours

---

Monday – Saturday: **9:00 - 21:00** EDT

Sunday: **closed**

---

## Address

---



Harbour Towne Marina, 850 NE 3rd St,  
STE 213, Dania, FL 33004