

PERFECT MATCH — STAMAS



Builder: STAMAS

LOA: 44' (13.41mm)

Year Built: 1984

Beam: 14

Model: Cruising Sailboat

Max Draft: 5' 6" (1.68mm)

Price: PRICE ON APPLICATION

Location: United States

Our experienced yacht broker, Andrey Shestakov, will help you choose and buy a yacht that best suits your needs **Perfect Match — STAMAS** from our catalogue. Presently, at Shestakov Yacht Sales Inc., we have a wide variety of yachts available on our sale's list. We also work in close contact with all the big yacht manufacturers from all over the world.

If you would like to buy a yacht **Perfect Match — STAMAS** or would like help answering any questions concerning purchasing, selling or chartering a yacht, please call **+1(954)274-4435**

TABLE OF CONTENTS

TABLE OF CONTENTS	2
SPECIFICATIONS	5
Overview	5
Basic Information	5
Dimensions	6
Speed, Capacities and Weight	6
Accommodations	6
Hull and Deck Information	6
Engine Information	6
PHOTOS	7
Perfect Match in the slip	7
Cockpit 1	7
Cockpit 2	7
Engine instruments	7
Table and cup holders	7
Foredeck with dinghy	7
Bow	8
IMG_2538	8
Windlass	8
Deck looking aft	8
Mast	9
Cabin top and canvas	9
Cockpit with table up	9
Aft deck	9
Outboard motor and lift	10
Stern rail with BBQ and davits	10
Propane locker (1 of 2)	10
Stern lazarette	10

Companionway and cabintop	11
Salon	11
Salon port	11
IMG_3002	11
Instruments 2	11
Instruments 1	11
Instruments 3	12
Salon Starboard	12
IMG_1408	12
Galley 2	12
Walkthrough	13
Galley, companionway, walkthrough	13
Aft cabin bunk	13
Aft cabin seating	13
IMG_3009	14
Aft cabin bunk and access to head	14
Aft head and separate shower	14
Aft cabin closet 1	14
Aft cabin closet 2	15
Aft cabin closet 3	15
Engine room access from aft cabin	15
Inverter & fuel filters	15
Generator	16
Generator with cover off	16
Engine room from walkthrough	16
Walkthrough storage	16
Forward head	17
Salon looking forward	17
Vanity in forward head	17

Forward cabin	17
Access to anchor locker from forward cabin	18
Storage below forward bunk	18
Peek-a-Boo blinds	18
On the hard	18
Stern view	19
CONTACTS	20
Contact details	20
Telephones	20
Office hours	20
Address	20

SPECIFICATIONS

Overview

VIRTUAL SHOWING AVAILABLE - MAKE APPOINTMENT WITH LISTING BROKER

If you want a safe, solid, classic-looking, go-anywhere boat you want a Stamas 44. Designed by Bob Johnson, of Island Packet fame, the Stamas 44 has the design pedigree of the Island Packet, combined with the building capabilities of the Stamas Brothers of Florida (better known for their power boats than as builders of sailboats). Perfect Match is one of 25 Stamas 44's built. She has had a LOT of fantastic upgrades since the current owner bought her 10 years ago. She has been actively cruised and is ready to go again.

Upgrades and recent additions:

Westerbeke 5.5HP Generator w/ 340 hours (2016) Victron Energy 2000 Inverter Marvair 12 000 BTU Aircon (2015) Suaoki Solar panels (6 x 60 W)(2016) Garmin Autopilot (2017) Garmin XHD18 Radar (45 mile)(2016) Garmin I-4210 Chartplotter at nav station Garmin 740s Chartplotter at helm (2015) ICOM 802B SSB (2017) Ullman Mainsail (2016) Ullman Mizzen sail (2016) Spinnaker poles (2) New standing rigging (2008) Running rigging replaced over last 7 years ROCNA 52lb anchor w/ 200' chain 2 x Danforth anchors w/ 15' chain and 200' rode Lofrans Tigres Electric windlass (2010) Davits Outboard engine lift (2015) Caribe 8'6" dinghy (Mercury 8 Hp outboard (new)).... and more

Now that you have read this list, you should be ready to pick up the phone to make an appointment to see this rare cruising ketch. The owners had planned to go to the Bahamas this winter, but due to a change in their circumstances, you will have to take Perfect Match south!

Basic Information

Category: Cruising Sailboat

Model Year: 1984

Year Built: 1984

Country: United States

Dimensions

LOA: 44' (13.41mm)

LWL: 36' 10" (11.23mm)

Beam: 14

Max Draft: 5' 6" (1.68mm)

Speed, Capacities and Weight

Water Capacity: 300 Gallons

Holding Tank: 40 Gal Gallons

Fuel Capacity: 170 Gal Gallons

Accommodations

Total Cabins: 2

Hull and Deck Information

Hull Material: Fiberglass

Engine Information

Engines: 1

Manufacturer: Perkins

Engine Type: Inboard

Fuel Type: Diesel

PHOTOS

Perfect Match in the slip



Cockpit 1



Cockpit 2



Engine instruments



Table and cup holders



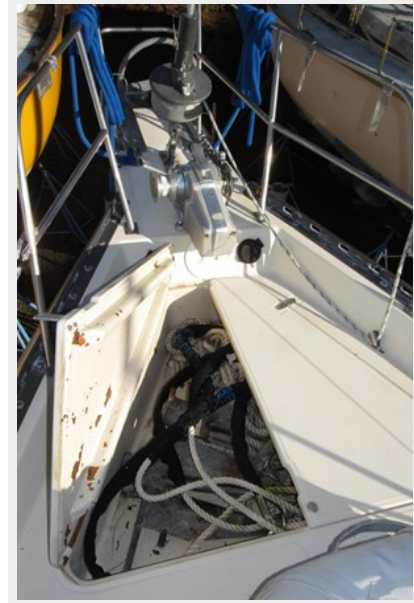
Foredeck with dinghy



Bow



IMG_2538



Windlass



Deck looking aft



Mast



Cabin top and canvas



Cockpit with table up



Aft deck



Stern rail with BBQ and davits



Outboard motor and lift



Stern lazarette



Propane locker (1 of 2)



Companionway and cabintop



Salon



Salon port



IMG_3002



Instruments 1



Instruments 2



Instruments 3



Salon Starboard



IMG_1408

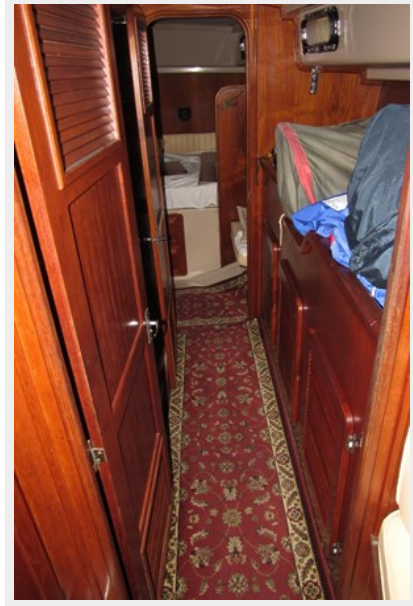


Galley 2



Walkthrough

Galley, companionway, walkthrough



Aft cabin bunk



Aft cabin seating



IMG_3009

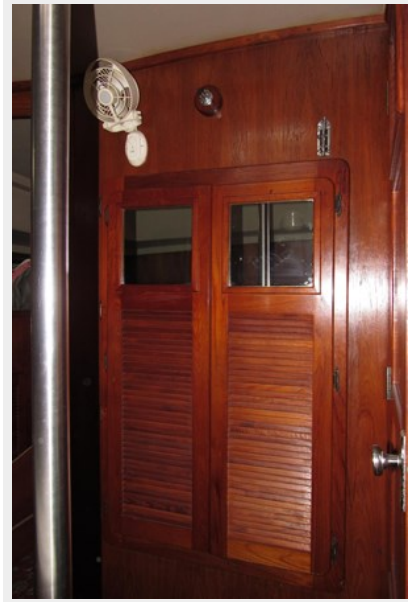
Aft cabin bunk and access to head



Aft head and separate shower



Aft cabin closet 1



Aft cabin closet 2



Aft cabin closet 3



Engine room access from aft cabin



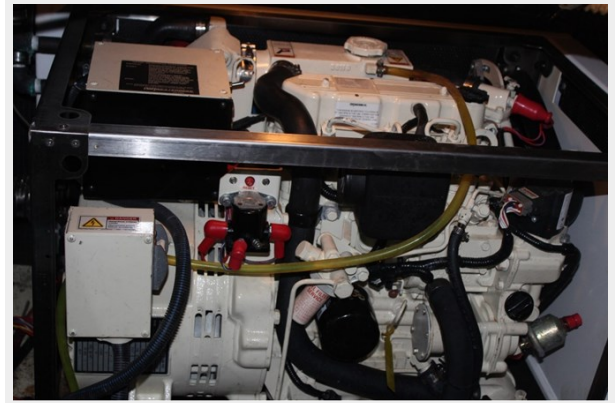
Inverter & fuel filters



Generator



Generator with cover off



Engine room from walkthrough



Walkthrough storage



Salon looking forward



Forward head



Vanity in forward head



Forward cabin



Access to anchor locker from forward cabin

Storage below forward bunk



Peek-a-Boo blinds



On the hard



Stern view



CONTACTS

Andrey Shestakov, leading yacht broker of the sales department of Shestakov Yacht Sales Inc. Shestakov Yacht Sales Inc., the official representative of the Miami/Fort Lauderdale FL headquarters.

Contact details

Email: andrey@shestakovyachtsales.com

Web: shestakovyachtsales.com/en/

Telephones

USA: +1(954)274-4435

Office hours

Monday – Saturday: **9:00 - 21:00** EDT

Sunday: **closed**

Address



Harbour Towne Marina, 850 NE 3rd St,
STE 213, Dania, FL 33004