

## NO NAME — WASHBURN & DOUGHTY



**Builder:** WASHBURN & DOUGHTY

**LOA:** 155' (47.24m)

**Year Built:** 1998

**Beam:** 41

**Model:** Commercial Vessel

**Price:** PRICE ON APPLICATION

**Location:** United States

Our experienced yacht broker, Andrey Shestakov, will help you choose and buy a yacht that best suits your needs **No Name — WASHBURN & DOUGHTY** from our catalogue. Presently, at Shestakov Yacht Sales Inc., we have a wide variety of yachts available on our sale's list. We also work in close contact with all the big yacht manufacturers from all over the world.

If you would like to buy a yacht **No Name — WASHBURN & DOUGHTY** or would like help answering any questions concerning purchasing, selling or chartering a yacht, please call **+1(954)274-4435**

# TABLE OF CONTENTS

TABLE OF CONTENTS	2
SPECIFICATIONS	4
Overview	4
Basic Information	4
Dimensions	4
Hull and Deck Information	4
Engine Information	4
PHOTOS	5
7521409_20200715103008705_1_XLARGE	5
7521409_20200715103025981_1_XLARGE	5
7521409_20200715102956832_1_XLARGE	5
7521409_20200715103037032_1_XLARGE	5
7521409_20200715103037843_1_XLARGE	5
7521409_20200715103020988_1_XLARGE	5
7521409_20200715103014419_1_XLARGE	6
7521409_20200715102953458_1_XLARGE	6
7521409_20200715102954930_1_XLARGE	6
7521409_20200715102955801_1_XLARGE	6
7521409_20200715102957653_1_XLARGE	6
7521409_20200715102959624_1_XLARGE	6
7521409_20200715103007717_1_XLARGE	7
7521409_20200715103011744_1_XLARGE	7
7521409_20200715103012654_1_XLARGE	7
7521409_20200715103013459_1_XLARGE	7
7521409_20200715103015810_1_XLARGE	7
7521409_20200715103024068_1_XLARGE	7
7521409_20200715103025068_1_XLARGE	8
7521409_20200715103027624_1_XLARGE	8

---

7521409_20200715103028698_1_XLARGE	8
7521409_20200715103029796_1_XLARGE	8
7521409_20200715103030745_1_XLARGE	8
7521409_20200715103031921_1_XLARGE	8
7521409_20200715103041510_1_XLARGE	9
7521409_20200715103032973_1_XLARGE	9
7521409_20200715103033929_1_XLARGE	9
7521409_20200715103035000_1_XLARGE	9
7521409_20200715103018112_1_XLARGE	9
7521409_20200715103035881_1_XLARGE	9
7521409_20200715103022873_1_XLARGE	10
7521409_20200715103039414_1_XLARGE	10
7521409_20200715103022081_1_XLARGE	10
7521409_20200715103846998_1_XLARGE	10
7521409_20200715103017167_1_XLARGE	10
7521409_20200715103848114_1_XLARGE	10
7521409_20200715103849357_1_XLARGE	11
7521409_20200715103850501_1_XLARGE	11
7521409_20200715103009702_1_XLARGE	11
7521409_20200715103010828_1_XLARGE	11
7521409_20200715102958531_1_XLARGE	11
CONTACTS	12
Contact details	12
Telephones	12
Office hours	12
Address	12

---

---

# SPECIFICATIONS

---

## Overview

---

**Fantastic business/investment opportunity!!**

500 Passenger casino cruise ship

3 levels, 181 slots, 12 gaming tables, 2 roulette tables, 2 crap tables, bars, restaurant.

Main engines are Caterpillar 3508's were overhauled two years ago. 2 newer Caterpillar 3412 generators. Bow thruster.

Please call or email for private showing.

## Basic Information

---

**Category:** Commercial Vessel

**Model Year:** 1998

**Year Built:** 1998

**Country:** United States

## Dimensions

---

**LOA:** 155' (47.24mm)

**Beam:** 41

## Hull and Deck Information

---

**Hull Material:** Steel

## Engine Information

---

**Engines:** 1

**Manufacturer:** Caterpillar

**Engine Type:** Inboard

**Fuel Type:** Diesel

# PHOTOS

7521409\_20200715103008705\_1\_XLARGE



7521409\_20200715103025981\_1\_XLARGE



7521409\_20200715102956832\_1\_XLARGE



7521409\_20200715103037032\_1\_XLARGE



7521409\_20200715103037843\_1\_XLARGE

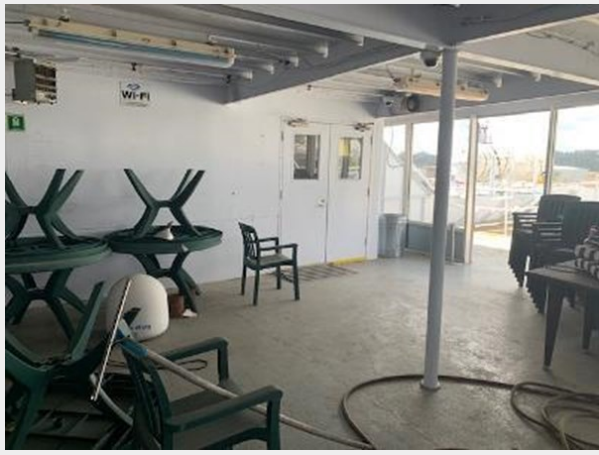


7521409\_20200715103020988\_1\_XLARGE





7521409\_20200715103014419\_1\_XLARGE



7521409\_20200715102953458\_1\_XLARGE



7521409\_20200715102954930\_1\_XLARGE



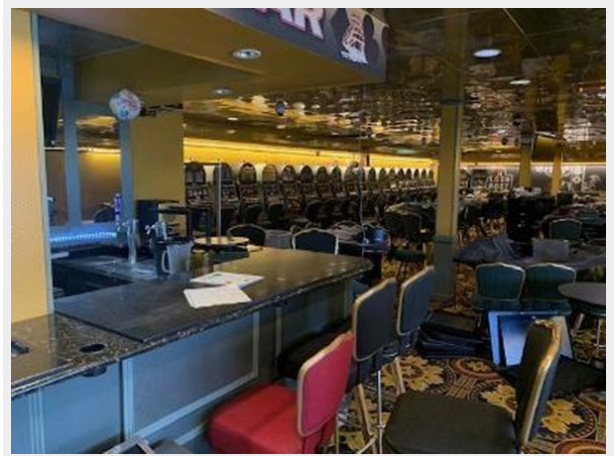
7521409\_20200715102955801\_1\_XLARGE



7521409\_20200715102957653\_1\_XLARGE



7521409\_20200715102959624\_1\_XLARGE





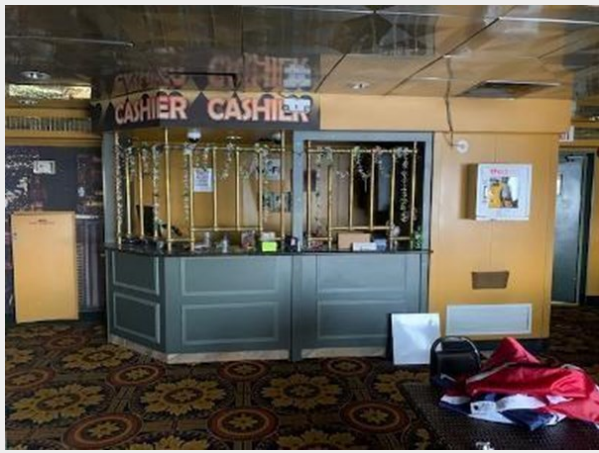
7521409\_20200715103007717\_1\_XLARGE



7521409\_20200715103011744\_1\_XLARGE



7521409\_20200715103012654\_1\_XLARGE



7521409\_20200715103013459\_1\_XLARGE



7521409\_20200715103015810\_1\_XLARGE



7521409\_20200715103024068\_1\_XLARGE





7521409\_20200715103025068\_1\_XLARGE



7521409\_20200715103027624\_1\_XLARGE



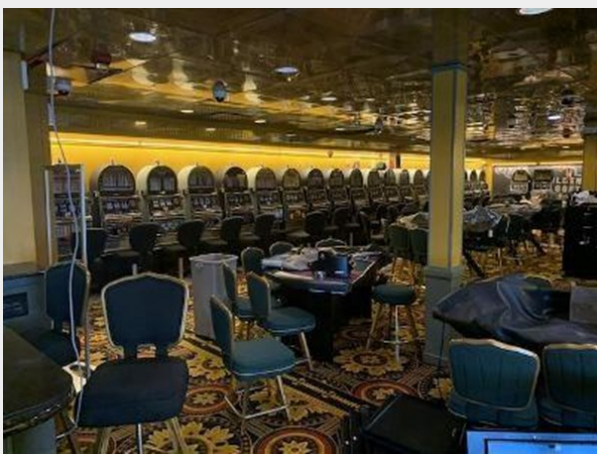
7521409\_20200715103028698\_1\_XLARGE



7521409\_20200715103029796\_1\_XLARGE



7521409\_20200715103030745\_1\_XLARGE



7521409\_20200715103031921\_1\_XLARGE





7521409\_20200715103041510\_1\_XLARGE



7521409\_20200715103032973\_1\_XLARGE



7521409\_20200715103033929\_1\_XLARGE



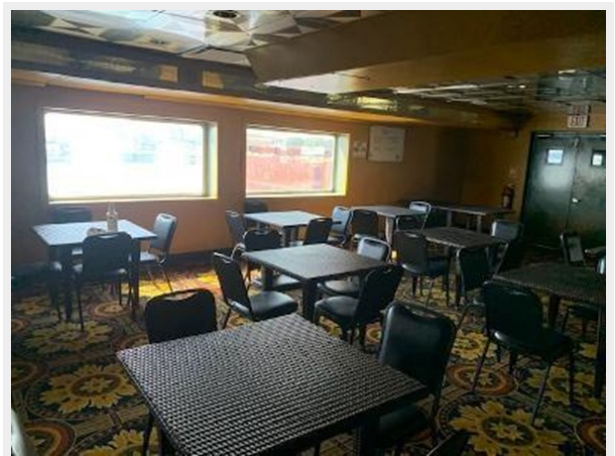
7521409\_20200715103035000\_1\_XLARGE



7521409\_20200715103018112\_1\_XLARGE



7521409\_20200715103035881\_1\_XLARGE





7521409\_20200715103022873\_1\_XLARGE



7521409\_20200715103039414\_1\_XLARGE



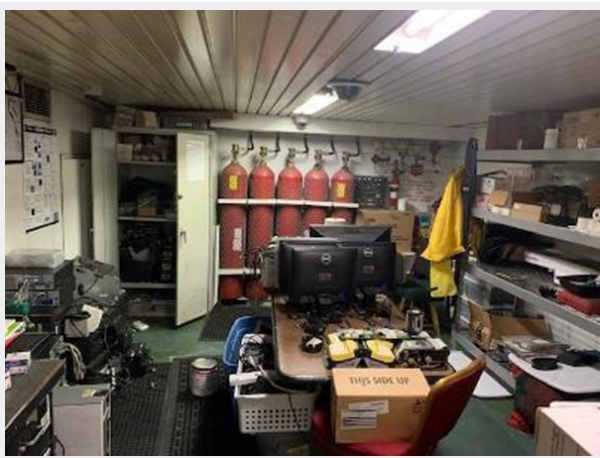
7521409\_20200715103022081\_1\_XLARGE



7521409\_20200715103846998\_1\_XLARGE



7521409\_20200715103017167\_1\_XLARGE



7521409\_20200715103848114\_1\_XLARGE



7521409\_20200715103849357\_1\_XLARGE



7521409\_20200715103850501\_1\_XLARGE



7521409\_20200715103009702\_1\_XLARGE



7521409\_20200715103010828\_1\_XLARGE



7521409\_20200715102958531\_1\_XLARGE





---

# CONTACTS

---

Andrey Shestakov, leading yacht broker of the sales department of Shestakov Yacht Sales Inc. Shestakov Yacht Sales Inc., the official representative of the Miami/Fort Lauderdale FL headquarters.

---

## Contact details

---

Email: [andrey@shestakovyachtsales.com](mailto:andrey@shestakovyachtsales.com)

Web: [shestakovyachtsales.com/en/](http://shestakovyachtsales.com/en/)

---

## Telephones

---

USA: +1(954)274-4435

---

## Office hours

---

Monday – Saturday: **9:00 - 21:00** EDT

Sunday: **closed**

---

## Address

---



Harbour Towne Marina, 850 NE 3rd St,  
STE 213, Dania, FL 33004