

CARPE DIEM — VIKING



Builder: VIKING

Year Built: 2001

Model: Flybridge

Price: \$389,000 USD

Location: United States

LOA: 56' (17.07m)

Beam: 15.5

Cruise Speed: 25 Knots Kts. (29 MPH)

Max Speed: 30 Knots Kts. (35 MPH)

Our experienced yacht broker, Andrey Shestakov, will help you choose and buy a yacht that best suits your needs **Carpe Diem — VIKING** from our catalogue. Presently, at Shestakov Yacht Sales Inc., we have a wide variety of yachts available on our sale's list. We also work in close contact with all the big yacht manufacturers from all over the world.

If you would like to buy a yacht **Carpe Diem — VIKING** or would like help answering any questions concerning purchasing, selling or chartering a yacht, please call **+1(954)274-4435**

TABLE OF CONTENTS

TABLE OF CONTENTS	2
SPECIFICATIONS	6
Overview	6
Basic Information	6
Dimensions	7
Speed, Capacities and Weight	7
Accommodations	7
Hull and Deck Information	7
Engine Information	7
PHOTOS	8
2_Port Profile 3	8
3_Starboard Profile 2 (2)	8
5_Starboard Stern Profile	8
4_Starboard Profile 2	8
6_Stern Profile 4	8
7_Swim Step	8
8_Aft Cockpit 1	9
9_DSCN0009	9
10_DSCN0011	9
11_DSCN0012	9
13_Aft Cockpit 3	9
12_DSCN0010	9
14_Aft Cockpit 4	10
15_Salon 1A	10
16_DSCN0015	10
17_DSCN0014	10
18_Interior carpet covers 1	10
19_DSCN0019	10

20_Starboard Couch U Couch5	11
21_DSCN0020	11
22_7508246_20200811222056728_1_XLARGE	11
23_Interior Dining 2	11
24_Interior Dining 3	11
25_7508246_20200812101200978_1_XLARGE	11
26_Interior Helm 3	12
27_Interior Helm Station1	12
28_Interior helm electronics 1	12
29_DSCN0265	12
30_DSCN0264	12
31_Raymarine Autopilot 2	12
32_Interior Bow Thruster	13
33_Interior Helm Station 1	13
34_Interior Helm seating	13
35_DSCN0026	13
36_Breaker Panel	13
37_DSCN0016	13
38_DSCN0017	14
39_DSCN0018	14
40_DSCN0027	14
41_DSCN0028	14
43_DSCN0031	14
42_DSCN0030	14
44_DSCN0034	15
45_DSCN0035	15
47_Side Deck	15
46_DSCN0040	15
48_Bow 1	16

49_Bow Sunpad area 4	16
50_Bow Sunpad area 2	16
51_Bow Sunpad area 3	16
52_Windlass	16
53_Flybridge from Bow 2	16
54_Aft COckpit Ladder to Flybridge	17
55_Flybridge Door to Aft Cockpit	17
56_Flybridge Seating 2	17
57_Flybridge Sunpad area	17
58_Flybridge Seating 1	17
59_Helm seating plus 2	17
60_Flybridge Helm 1	18
61_Flybridge Helm Station 2	18
62_Flybridge Raymarine Electronics 2	18
63_Flybridge Stove, sink & frig2	18
64_Flybridge frig 3	18
65_Flybridge frig 2	18
66_Flybridge Stovetop 1	19
67_Flybridge Stovetop 3	19
68_Flybridge Forward View	19
69_Flybridge Port View	19
70_Radar	19
71_Port Engine 1	19
72_Stbd Engine 1	20
73_Stbd Engine 3	20
74_Generator 1	20
75_Generator 2	20
76_Generator 3	20
77_Engine Room 1	20

CONTACTS	21
Contact details	21
Telephones	21
Office hours	21
Address	21

SPECIFICATIONS

Overview

TURN KEY & PRICED TO SELL BY THE ORIGINAL OWNERS!

If you're looking for a real gem, and a great buy, then don't let this one get away! **Carpe Diem** has always been professionally & meticulously maintained by her knowledgeable and experienced owners with an open checkbook. All mains, transmission, and generator **services are up to date**, all new Raymarine HybridTouch electronics, and numerous other upgrades. Pride of ownership shows throughout the vessel.

A head-turning Sport Cruiser with three staterooms and two heads. Powered by Low Houred (599) Twin Volvo D12 Diesels at 715Hp each that will ensure reliable performance and an exhilarating cruise. Premium accommodations, fully equipped galley, and lots of storage - the perfect weekend getaway! **The nicest and most equipped 56' Viking Sport Cruiser on the market!**

Beautiful Inside and Out!

- Twin Volvo D12 Diesels @ 715HP each
- Raymarine Autopilot
- New Raymarine HybridTouch System (Radar/GPS/ Chart Plotter)
- Upgraded Sound System
- Marine Air A/C & Heat
- Spacious flybridge
- Large Cockpit & Salon areas
- Isinglass Bridge Enclosure

DON'T MISS THIS INCREDIBLE OPPORTUNITY!

ALL OFFERS WILL BE CONSIDERED!

Basic Information

Category: Flybridge

Sub Category: Flybridge

Model Year: 2001

Year Built: 2001

Country: United States

Dimensions

LOA: 56' (17.07m)

Beam: 15.5

Speed, Capacities and Weight

Cruise Speed: 25 Knots Kts. (29 MPH)

Max Speed: 30 Knots Kts. (35 MPH)

Water Capacity: 200 Gallons

Fuel Capacity: 576 Gal Gallons

Accommodations

Total Cabins: 3

Total Heads: 2

Hull and Deck Information

Hull Material: Fiberglass

Engine Information

Engines: 2

Manufacturer: Volvo

Engine Type: Inboard

Fuel Type: Diesel

PHOTOS

2_Port Profile 3



3_Starboard Profile 2 (2)



4_Starboard Profile 2



5_Starboard Stern Profile



6_Stern Profile 4



7_Swim Step



8_Aft Cockpit 1



9_DSCN0009



10_DSCN0011



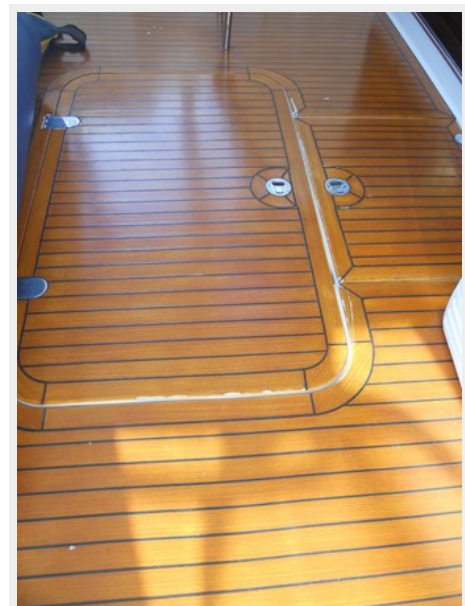
11_DSCN0012



12_DSCN0010



13_Aft Cockpit 3



14_Aft Cockpit 4



15_Salon 1A



16_DSCN0015



17_DSCN0014



18_Interior carpet covers 1



19_DSCN0019



20_Starboard Couch U Couch5



21_DSCN0020



22_7508246_20200811222056728_1_XLARGE



23_Interior Dining 2



24_Interior Dining 3



25_7508246_20200812101200978_1_XLARGE



26_Interior Helm 3



27_Interior Helm Station1



28_Interior helm electronics 1



29_DSCN0265



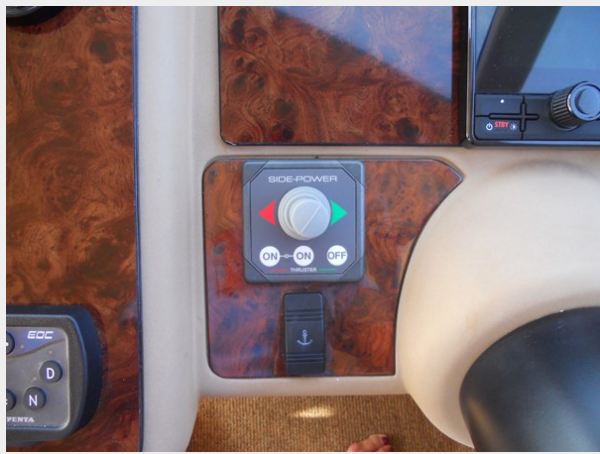
30_DSCN0264



31_Raymarine Autopilot 2



32_Interior Bow Thruster



33_Interior Helm Station 1



34_Interior Helm seating



35_DSCN0026



36_Breaker Panel



37_DSCN0016



38_DSCN0017



39_DSCN0018



40_DSCN0027



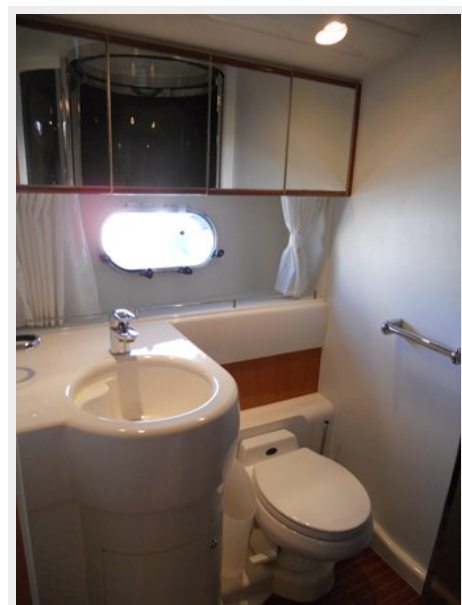
41_DSCN0028



42_DSCN0030



43_DSCN0031



44_DSCN0034



45_DSCN0035



47_Side Deck



46_DSCN0040



48_Bow 1



49_Bow Sunpad area 4



50_Bow Sunpad area 2



51_Bow Sunpad area 3



52_Windlass



53_Flybridge from Bow 2



54_Aft COckpit Ladder to Flybridge



55_Flybridge Door to Aft Cockpit



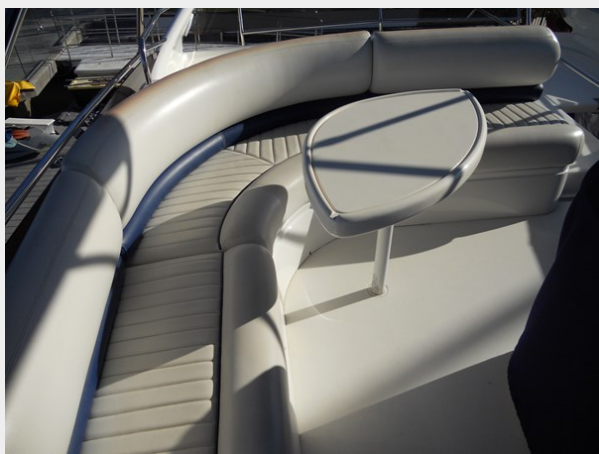
56_Flybridge Seating 2



57_Flybridge Sunpad area



58_Flybridge Seating 1



59_Helm seating plus 2



60_Flybridge Helm 1



61_Flybridge Helm Station 2



62_Flybridge Raymarine Electronics 2



63_Flybridge Stove, sink & frig 2



64_Flybridge frig 3



65_Flybridge frig 2



66_Flybridge Stovetop 1



67_Flybridge Stovetop 3



68_Flybridge Forward View



69_Flybridge Port View



70_Radar



71_Port Engine 1



72_Stbd Engine 1



73_Stbd Engine 3



74_Generator 1



75_Generator 2



76_Generator 3



77_Engine Room 1



CONTACTS

Andrey Shestakov, leading yacht broker of the sales department of Shestakov Yacht Sales Inc. Shestakov Yacht Sales Inc., the official representative of the Miami/Fort Lauderdale FL headquarters.

Contact details

Email: andrey@shestakovyachtsales.com

Web: shestakovyachtsales.com/en/

Telephones

USA: +1(954)274-4435

Office hours

Monday – Saturday: **9:00 - 21:00** EDT

Sunday: **closed**

Address



Harbour Towne Marina, 850 NE 3rd St,
STE 213, Dania, FL 33004