

BULL — CANADOS



Builder: CANADOS

Year Built: 2016

Model: Motor Yacht

Price: PRICE ON APPLICATION

Location: France

LOA: 76' (23.16mm)

Beam: 19

Min Draft: 6' 11" (2.11mm)

Cruise Speed: 23 Knots Kts. (26 MPH)

Max Speed: 26 Knots Kts. (30 MPH)

Our experienced yacht broker, Andrey Shestakov, will help you choose and buy a yacht that best suits your needs **BULL — CANADOS** from our catalogue. Presently, at Shestakov Yacht Sales Inc., we have a wide variety of yachts available on our sale's list. We also work in close contact with all the big yacht manufacturers from all over the world.

If you would like to buy a yacht **BULL — CANADOS** or would like help answering any questions concerning purchasing, selling or chartering a yacht, please call **+1(954)274-4435**

TABLE OF CONTENTS

TABLE OF CONTENTS	2
SPECIFICATIONS	4
Overview	4
Basic Information	5
Dimensions	5
Speed, Capacities and Weight	5
Accommodations	5
Hull and Deck Information	5
Engine Information	5
PHOTOS	6
CANADOS OCEANIC BULL (3)	6
CANADOS OCEANIC BULL (2)	6
CANADOS OCEANIC BULL (4)	6
CANADOS OCEANIC BULL (12)	6
CANADOS OCEANIC BULL (11)	6
CANADOS OCEANIC BULL (5)	6
CANADOS OCEANIC BULL (6)	7
CANADOS OCEANIC BULL (7)	7
CANADOS OCEANIC BULL (8)	7
CANADOS OCEANIC BULL (9)	7
CANADOS OCEANIC BULL (10)	7
CANADOS OCEANIC BULL (13)	7
GA	8
CONTACTS	9
Contact details	9
Telephones	9
Office hours	9
Address	9

SPECIFICATIONS

Overview

The Oceanic 76' GT Fast Expedition is the first model in the Oceanic Yacht Range. She is the only yacht of her size that offers a 30+ square meter/323 sq. feet aft deck with sun pad, U shaped saloon for 10 people and open-air dining room for 8.

The wheelhouse is located on the main deck, while the saloon and the dining room share an open plan configuration. The galley is located amidships, buffering the social areas from the wheelhouse where the crew can run the boat without interfering with the owner and guests' privacy.

Benefitting from a carefully studied stepped hull, with her V Drive shaft configuration and twin Caterpillar C18 Acert, the Oceanic 76' GT Fast Expedition is capable of the enviable performance of 23-knots at cruising speed and a 26-knots top speed.

The lower deck is available either in a 4-cabin version with a full beam owner's cabin, a VIP and two twins or in a 3-cabin version with an oversized owner's suite that includes a private saloon. Outdoor living at its best. The foredeck is equipped with a dinette where you will enjoy relaxing when the boat is underway, protected by massive bulwarks. On the fly bridge, which layout can be also customized to clients' request, we offer as standard layout with a second control station, a dining table for 8 shaded by the wing shaped hard top, lounge and sun pads.

Technically, the Oceanic 76' GT Fast Expedition is not only a true marvel in terms of handling she is also a concentrate of modern technologies with its entire superstructure made of Kevlar/Aramat. This material mainly used in the aeronautical industry, allows building a stronger and much lighter superstructure. It results in a lower center of gravity that increases the boat stability. The displaning hull concept, unique to Oceanic Yachts, reduces the buoyancy of the aft section of the hull when running at displacement speeds. As a result, during long range cruises at low speed, the boat remains extremely comfortable as it eliminates the natural weakness of most fast yachts; pitching. At planning speed, from 16 knots, the Oceanic 76' starts benefiting from the step that ventilate the hull and the propellers allowing for high speeds thanks to reduced wet surface and water friction.

KEY FEATURES

- Extensive outdoor decks
- Oversized social areas
- Superstructure was made of Kevlar / Aramat for light weight to reduce the centre of gravity for optimum stability
- BULL is hull#01 of her series, the prototype of its model and catalogue boat
- The photos seen on our internet site and builder's internet site was taken from BULL
- Hydraulic swimming platform and it is capable of lifting 600 kg

Basic Information

Category: Motor Yacht

Sub Category: Motor Yacht

Model Year: 2016

Year Built: 2016

Country: France

Dimensions

LOA: 76' (23.16mm)

Beam: 19

Min Draft: 6' 11" (2.11mm)

Speed, Capacities and Weight

Cruise Speed: 23 Knots Kts. (26 MPH)

Cruise Speed Range: 360

Max Speed: 26 Knots Kts. (30 MPH)

Gross Tonnage: 76 Pounds

Water Capacity: 1200 Gallons

Fuel Capacity: 1268.03 Gal Gallons

Accommodations

Total Cabins: 3

Sleeps: 6

Hull and Deck Information

Hull Material: Fiberglass

Engine Information

Engines: 2

Manufacturer: CAT

Engine Type: Inboard

Fuel Type: Diesel

PHOTOS

CANADOS OCEANIC BULL (2)



CANADOS OCEANIC BULL (3)



CANADOS OCEANIC BULL (4)



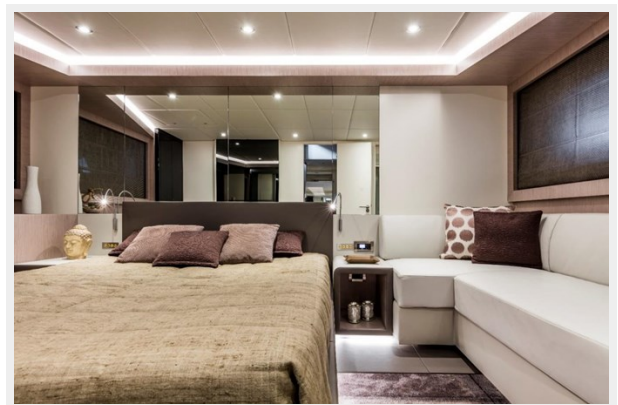
CANADOS OCEANIC BULL (12)



CANADOS OCEANIC BULL (11)



CANADOS OCEANIC BULL (5)



CANADOS OCEANIC BULL (6)



CANADOS OCEANIC BULL (7)



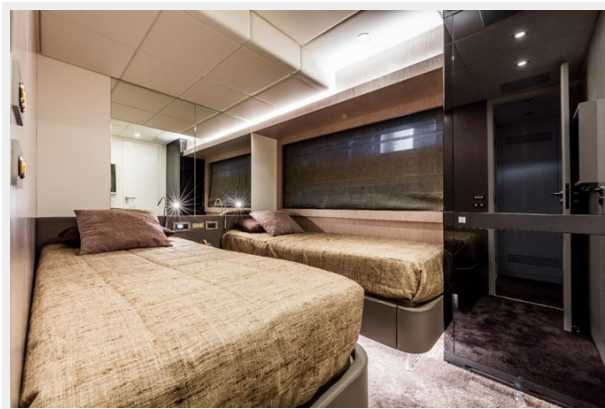
CANADOS OCEANIC BULL (8)



CANADOS OCEANIC BULL (9)



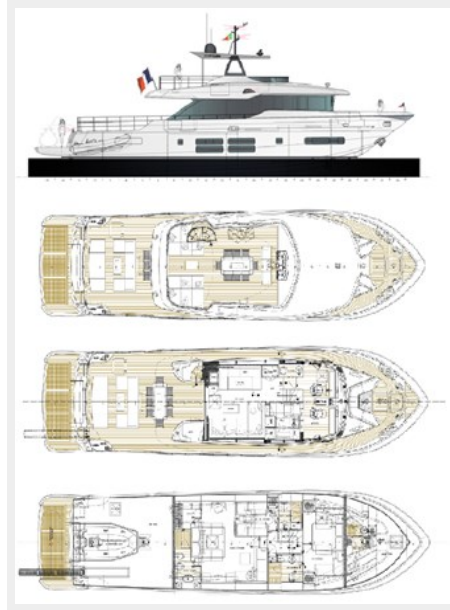
CANADOS OCEANIC BULL (10)



CANADOS OCEANIC BULL (13)



GA



CONTACTS

Andrey Shestakov, leading yacht broker of the sales department of Shestakov Yacht Sales Inc. Shestakov Yacht Sales Inc., the official representative of the Miami/Fort Lauderdale FL headquarters.

Contact details

Email: andrey@shestakovyachtsales.com

Web: shestakovyachtsales.com/en/

Telephones

USA: +1(954)274-4435

Office hours

Monday – Saturday: **9:00 - 21:00** EDT

Sunday: **closed**

Address



Harbour Towne Marina, 850 NE 3rd St,
STE 213, Dania, FL 33004