

## REGENCY P65 PHMY — REGENCY



**Builder:** REGENCY

**Year Built:** 2019

**Model:** Motor Yacht

**Price:** PRICE ON APPLICATION

**LOA:** 65' (19.81mm)

**Beam:** 18.25

**Min Draft:** 5' 2" (1.57mm)

**Cruise Speed:** 19 Knots Kts. (22 MPH)

**Max Speed:** 22 Knots Kts. (25 MPH)

Our experienced yacht broker, Andrey Shestakov, will help you choose and buy a yacht that best suits your needs **Regency P65 PHMY — REGENCY** from our catalogue. Presently, at **Shestakov Yacht Sales Inc.**, we have a wide variety of yachts available on our sale's list. We also work in close contact with all the big **yacht manufacturers** from all over the world.

If you would like to buy a yacht **Regency P65 PHMY — REGENCY** or would like help answering any questions concerning purchasing, selling or chartering a yacht, please call **+1(954)274-4435**

---

# TABLE OF CONTENTS

---

TABLE OF CONTENTS	2
SPECIFICATIONS	3
Overview	3
Basic Information	3
Dimensions	3
Speed, Capacities and Weight	3
Accommodations	4
Hull and Deck Information	4
Engine Information	4
PHOTOS	5
CONTACTS	13
Contact details	13
Telephones	13
Office hours	13
Address	13

---

# SPECIFICATIONS

---

## Overview

---

Decompress as you step aboard a Regency Yacht. Designed for quiet beauty engineered to the finest detail each of our yachts is a movable space that lives large. Crafted by a family-owned Taiwanese company who have been building yachts for over 50 years, our vessels offer five-star amenities along with excellent sea-keeping capabilities. Enjoy European sophistication and modern technology suited to your cruising style.

Remarkable craftsmanship is reflected in subtle ways throughout the yacht including some of the finest handcrafted hardwood carpentry found in the marine industry today. Beautifully honed wood, granite, marble, and stainless steel are used throughout the interior. Every detail is attend to from distinctive wall coverings to European hardware and UV blocking tinted windows.

## Basic Information

---

**Category:** Motor Yacht

**Sub Category:** Pilothouse

**Model Year:** 2019

**Year Built:** 2019

## Dimensions

---

**LOA:** 65' (19.81mm)

**LOD:** 65' 10" (20.07mm)

**Beam:** 18.25

**Min Draft:** 5' 2" (1.57mm)

## Speed, Capacities and Weight

---

**Cruise Speed:** 19 Knots Kts. (22 MPH) **Max Speed:** 22 Knots Kts. (25 MPH)

**Water Capacity:** 285 Gallons

**Holding Tank:** 100 Gal Gallons

**Fuel Capacity:** 1200 Gal Gallons

---

## Accommodations

---

**Total Cabins:** 3

**Sleeps:** 6

**Total Heads:** 3

---

## Hull and Deck Information

---

**Hull Material:** Fiberglass

**Hull Configuration:** Planing

---

## Engine Information

---

**Engines:** 2

**Manufacturer:** Volvo

**Engine Type:** Inboard

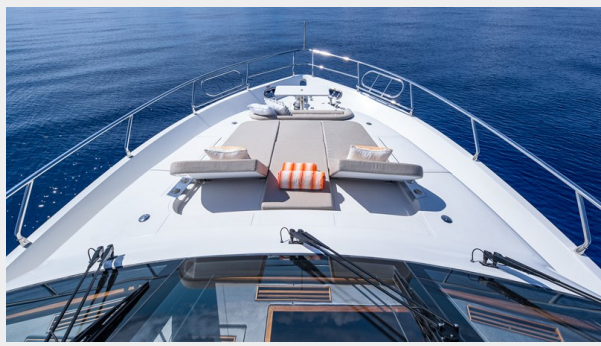
**Fuel Type:** Diesel



# PHOTOS







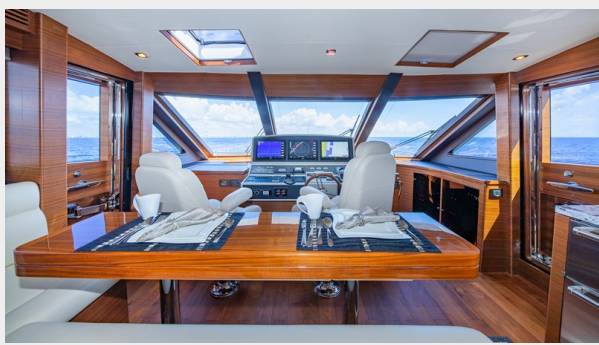








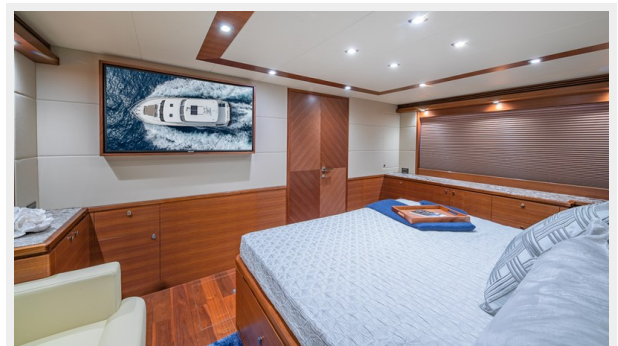




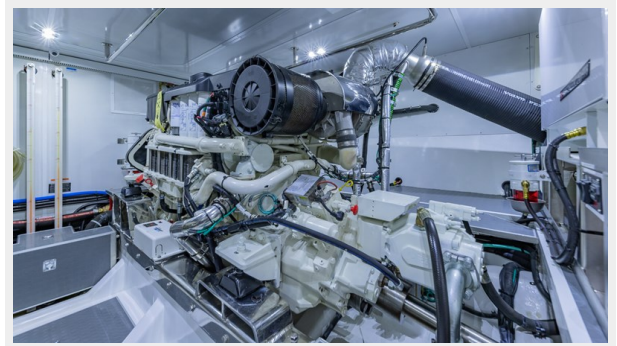












# CONTACTS

---

Andrey Shestakov, leading yacht broker of the sales department of Shestakov Yacht Sales Inc. Shestakov Yacht Sales Inc., the official representative of the Miami/Fort Lauderdale FL headquarters.

## Contact details

---

Email: **andrey@shestakovyachtsales.com**

Web: [shestakovyachtsales.com/en/](http://shestakovyachtsales.com/en/)

## Telephones

---

USA: **+1(954)274-4435**

## Office hours

---

Monday – Saturday: **9:00 - 21:00** EDT

Sunday: **closed**

## Address

---



Harbour Towne Marina, 850 NE 3rd St, STE 213, Dania, FL 33004