

ADEL — BENETEAU



Builder: BENETEAU

LOA: 50' (15.24m)

Year Built: 2017

Cruise Speed: 20 Knots Kts. (23 MPH)

Model: Motor Yacht

Price: PRICE ON APPLICATION

Location: Croatia

Our experienced yacht broker, Andrey Shestakov, will help you choose and buy a yacht that best suits your needs **ADEL — BENETEAU** from our catalogue. Presently, at Shestakov Yacht Sales Inc., we have a wide variety of yachts available on our sale's list. We also work in close contact with all the big yacht manufacturers from all over the world.

If you would like to buy a yacht **ADEL — BENETEAU** or would like help answering any questions concerning purchasing, selling or chartering a yacht, please call **+1(954)274-4435**

TABLE OF CONTENTS

TABLE OF CONTENTS	2
SPECIFICATIONS	3
Overview	3
Basic Information	3
Dimensions	3
Speed, Capacities and Weight	3
Accommodations	4
Hull and Deck Information	4
Engine Information	4
PHOTOS	5
sans-titre	7
vip	7
cabineinvitesdeuxlits	7
owners	7
cabineinviteetproprio	8
CONTACTS	9
Contact details	9
Telephones	9
Office hours	9
Address	9

SPECIFICATIONS

Overview

M/Y ADEL is 15.23 m long and was built by Beneteau in 2017. She belongs to the 50 GT model, which is new in Beneteau's Air Step hull design leading to a better fuel economy and an increase in speed while using the same power as her preceding model. ADEL can accommodate six guests in three cabins. Her beautiful full-beam master cabin has an open bathroom, whereas the second bathroom is located next to the VIP-cabin. One of her many pros is the ideal use for storage space in the cabins. Especially the master cabin, which has a huge closet in the port, storages on both sides of the beds, and huge bed boxes enable her guests to have maximum space in the passages. Beneteau has done an amazing job of creating a seamless flow between the cockpit and the salon giving her one of the largest entertainment areas in her class. Exterior amenities are among others the bench which is convertible into an amazing sunbed, her hydraulic swim platform, and the hardtop with an electric sunroof guaranteeing the best experiences on board. ADEL has a tender garage for tenders up to 2,90 m or for the type Williams mini-jet 280. Her cruising speed is 20 knots with a fuel tank of 1300 L. Currently located in Split, Croatia, ADEL is open for viewings

Basic Information

Category: Motor Yacht

Model Year: 2017

Year Built: 2017

Country: Croatia

Dimensions

LOA: 50' (15.24mm)

Speed, Capacities and Weight

Cruise Speed: 20 Knots Kts. (23 MPH)

Water Capacity: 400 Gallons

Fuel Capacity: 343.42 Gal Gallons

Accommodations

Total Cabins: 3

Total Heads: 2

Hull and Deck Information

Hull Material: GRP

Hull Configuration: Planing

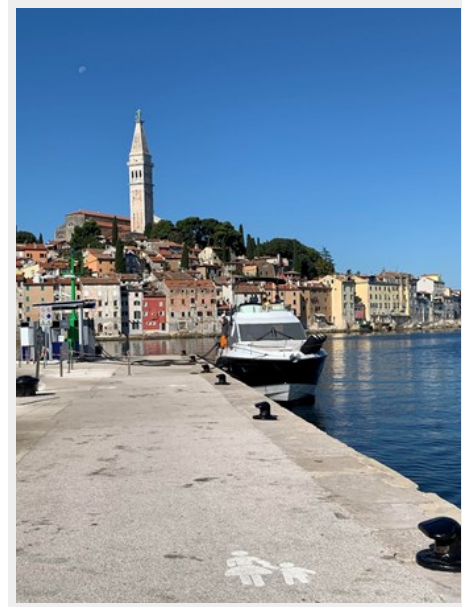
Engine Information

Engines: 2

Manufacturer: Volvo

PHOTOS







sans-titre



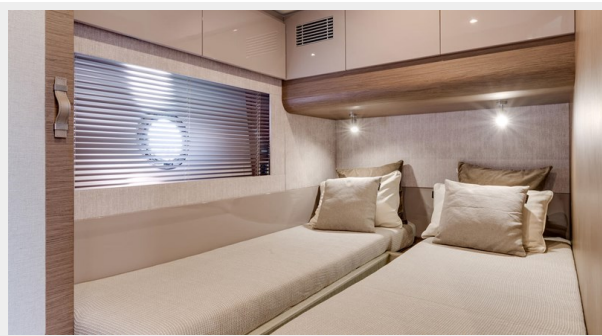
vip



cabineinvitesdeuxlits



owners



cabineinviteetproprio



CONTACTS

Andrey Shestakov, leading yacht broker of the sales department of Shestakov Yacht Sales Inc. Shestakov Yacht Sales Inc., the official representative of the Miami/Fort Lauderdale FL headquarters.

Contact details

Email: andrey@shestakovyachtsales.com

Web: shestakovyachtsales.com/en/

Telephones

USA: +1(954)274-4435

Office hours

Monday – Saturday: **9:00 - 21:00** EDT

Sunday: **closed**

Address



Harbour Towne Marina, 850 NE 3rd St,
STE 213, Dania, FL 33004