

## **SECOND WIND — ISLAND PACKET YACHTS**



**Builder:** ISLAND PACKET YACHTS

**Year Built:** 2007

**Model:** Cruising Sailboat

**Price:** PRICE ON APPLICATION

**Location:** United States

**LOA:** 41' 8" (12.7mm)

**Beam:** 12.66

**Max Draft:** 3' 8" (1.12mm)

Our experienced yacht broker, Andrey Shestakov, will help you choose and buy a yacht that best suits your needs **Second Wind — ISLAND PACKET YACHTS** from our catalogue. Presently, at Shestakov Yacht Sales Inc., we have a wide variety of yachts available on our sale's list. We also work in close contact with all the big yacht manufacturers from all over the world.

If you would like to buy a yacht **Second Wind — ISLAND PACKET YACHTS** or would like help answering any questions concerning purchasing, selling or chartering a yacht, please call **+1(954)274-4435**

# TABLE OF CONTENTS

TABLE OF CONTENTS	2
SPECIFICATIONS	5
Overview	5
Basic Information	5
Dimensions	6
Speed, Capacities and Weight	6
Accommodations	6
Hull and Deck Information	6
Engine Information	6
PHOTOS	7
Second Wind	7
Second Wind	8
Deck	8
Bow Pulpit and Boom	8
Bow Pulpit	8
Helm	8
Helm	8
Helm	9
Helm	9
Cabinetry	9
Cabinetry and Sole	9
Refrigeration, Freezer	9
Refrigeration, Freezer	9
Oven and Stove	10
Refrigeration	10
Companionway	10
Control Panel	10
Nav Station	10

Settee and Dinette	10
Settee and Dinette Deployed	11
Helm	11
Helm	11
Helm	11
Electronics	11
Panel	11
Panel	12
Companionway	12
Engine Access Under Companionway	12
Control Panel	12
Storage	12
Galley	12
Galley	13
Refrigeration	13
Refrigeration	13
SS Double Sink	13
Chart Table	13
Chart Table	13
Aft Cabin	14
Aft Cabin Cabinetry	14
Head	14
Shower	14
Owner's Cabin	14
Owner's Cabin	14
Owner's Cabin	15
Cockpit and controls	15
Bow Pulpit	15
Deck Looking Aft	15

---

Forward Cockpit	15
Forward Cockpit and Blinds	15
Forward Cockpit	16
Forward Cockpit	16
Aft Cockpit	16
Aft Cockpit	16
Outboard and Bracket	16
Grill	16
Aft Cockpit	17
CONTACTS	18
Contact details	18
Telephones	18
Office hours	18
Address	18

---

# SPECIFICATIONS

---

## Overview

---

### Second Wind

is waiting to find her new owners. She has everything that you need to accomplish your cruising, liveaboard or lifestyle goals. Please view the complete listing and photos for specifications.

The award-winning SP Cruiser offers year-round boating comfort, trawler-like livability and motoring performance, and simple, versatile sailing and legendary Island Packet quality and value.

Among many unique features include the SP Cruiser's twin cockpits. One aft, perfect for the morning's first cup of coffee, plus one forward, excellent for relaxed seating, cruising or at anchor on a beautiful day.

Large CE Category A - Ocean rated opening windows in the enclosed deckhouse offer panoramic views, while the center windshield panel hinges upward to allow socializing with family and friends in the forward cockpit.

Control of the vessel is made easy and comfortable with dual swivel helm and companion chairs plus a large console forward of the wheel with engine controls and instrumentation. An autopilot gives you the ability to steer the boat from virtually any location aboard with a wireless handheld remote. The forward chairs and L-shaped settee is a great spot for meals and entertainment regardless of the weather.

---

## Basic Information

---

**Category:** Cruising Sailboat

**Model Year:** 2007

**Year Built:** 2007

**Country:** United States

---

## Dimensions

---

**LOA:** 41' 8" (12.7mm)

**Beam:** 12.66

**Max Draft:** 3' 8" (1.12mm)

---

## Speed, Capacities and Weight

---

**Water Capacity:** 130 Gallons

**Holding Tank:** 50 Gal Gallons

**Fuel Capacity:** 220 Gal Gallons

---

## Accommodations

---

**Total Cabins:** 2

**Total Heads:** 1

---

## Hull and Deck Information

---

**Hull Material:** Fiberglass

---

## Engine Information

---

**Engines:** 1

**Manufacturer:** Yanmar

**Engine Type:** Inboard

**Fuel Type:** Diesel

# PHOTOS



**Second Wind**



**Second Wind**



**Deck**



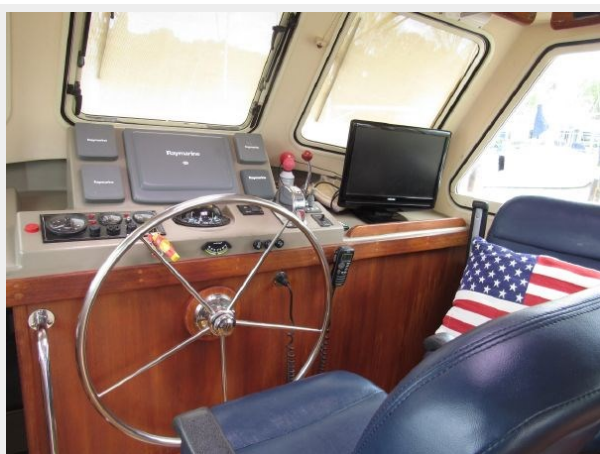
**Bow Pulpit and Boom**



**Bow Pulpit**



**Helm**

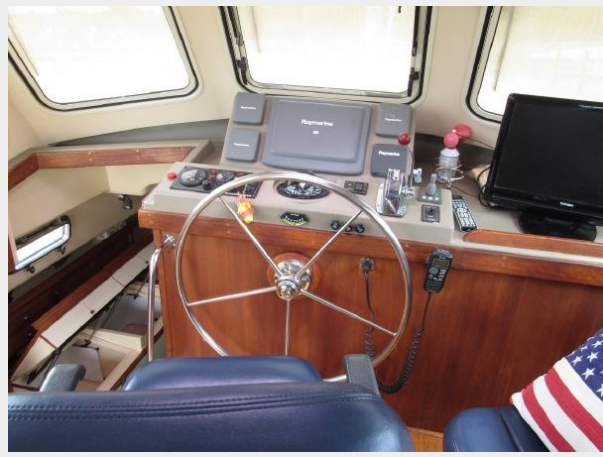


**Helm**





**Helm**



**Helm**



**Cabinetry**



**Cabinetry and Sole**



**Refrigeration, Freezer**



**Refrigeration, Freezer**



**Oven and Stove**



**Refrigeration**



**Companionway**



**Control Panel**



**Nav Station**



**Settee and Dinette**



**Settee and Dinette Deployed**



**Helm**



**Helm**



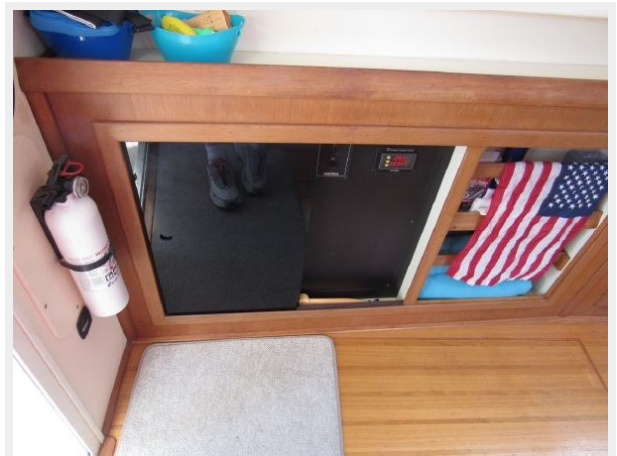
**Helm**



**Electronics**



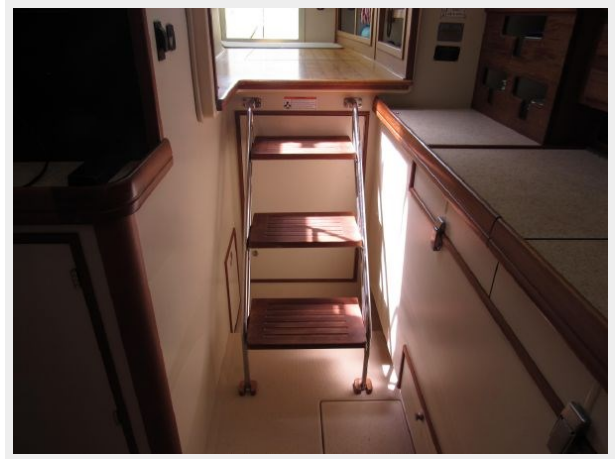
**Panel**



**Panel**



**Companionway**



**Engine Access Under Companionway**



**Control Panel**



**Storage**



**Galley**



**Galley**



**Refrigeration**



**Refrigeration**



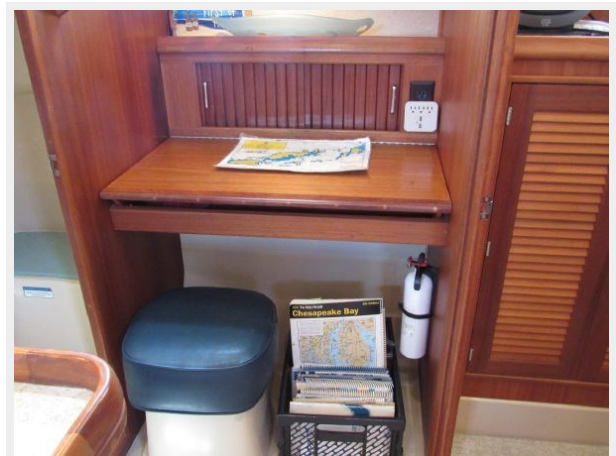
**SS Double Sink**



**Chart Table**



**Chart Table**



**Aft Cabin**



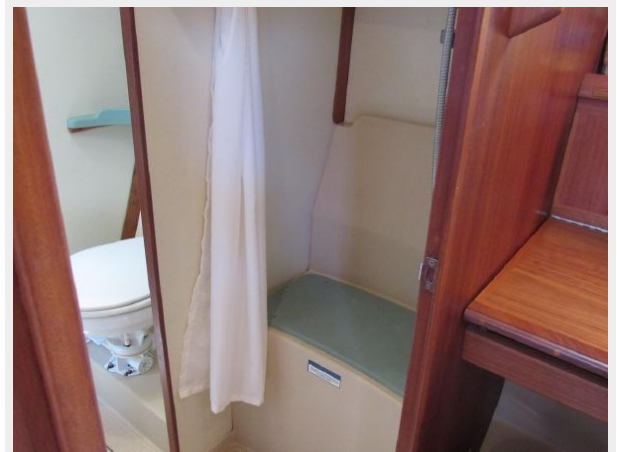
**Aft Cabin Cabinetry**



**Head**



**Shower**



**Owner's Cabin**



**Owner's Cabin**



**Owner's Cabin**



**Cockpit and controls**



**Bow Pulpit**



**Deck Looking Aft**



**Forward Cockpit**



**Forward Cockpit and Blinds**



**Forward Cockpit**



**Forward Cockpit**



**Aft Cockpit**



**Aft Cockpit**



**Outboard and Bracket**



**Grill**





## Aft Cockpit



# CONTACTS

---

Andrey Shestakov, leading yacht broker of the sales department of Shestakov Yacht Sales Inc. Shestakov Yacht Sales Inc., the official representative of the Miami/Fort Lauderdale FL headquarters.

## Contact details

---

Email: [andrey@shestakovyachtsales.com](mailto:andrey@shestakovyachtsales.com)

Web: [shestakovyachtsales.com/en/](http://shestakovyachtsales.com/en/)

## Telephones

---

USA: +1(954)274-4435

## Office hours

---

Monday – Saturday: **9:00 - 21:00** EDT

Sunday: **closed**

## Address

---



Harbour Towne Marina, 850 NE 3rd St,  
STE 213, Dania, FL 33004