

NINO — AZIMUT YACHTS



Builder: AZIMUT YACHTS

Year Built: 2017

Model: Cruising Yacht

Price: PRICE ON APPLICATION

Location: United States

LOA: 55' (16.76m)

Beam: 15.58

Max Draft: 4' 8" (1.42m)

Cruise Speed: 30 Knots Kts. (35 MPH)

Our experienced yacht broker, Andrey Shestakov, will help you choose and buy a yacht that best suits your needs **NINO — AZIMUT YACHTS** from our catalogue. Presently, at Shestakov Yacht Sales Inc., we have a wide variety of yachts available on our sale's list. We also work in close contact with all the big yacht manufacturers from all over the world.

If you would like to buy a yacht **NINO — AZIMUT YACHTS** or would like help answering any questions concerning purchasing, selling or chartering a yacht, please call **+1(954)274-4435**

TABLE OF CONTENTS

TABLE OF CONTENTS	2
SPECIFICATIONS	6
Overview	6
Basic Information	8
Dimensions	8
Speed, Capacities and Weight	8
Accommodations	8
Hull and Deck Information	9
Engine Information	9
PHOTOS	10
DJI_0085	10
DJI_0026	10
DJI_0090	10
DJI_0016	10
DJI_0069	10
DJI_0015	10
DJI_0052	11
DJI_0037	11
11	11
DJI_0030	11
12	12
13	12
19	12
17	12
21	13
20	13
23	13
22	13

24	14
25	14
26	14
27	14
29	14
28	14
30	15
31	15
32	15
33	15
34	15
35	15
36	16
37	16
38	16
39	16
40	16
41	16
42	17
43	17
44	17
45	17
47	17
46	17
48	18
49	18
51	18
50	18
52	18

53	18
54	19
DSC00352	19
DSC00353	19
DSC00355	19
DSC00360	19
DSC00357	19
DSC00362	20
DSC00365	20
DSC00366	20
DSC00368	20
DSC00372	20
DSC00374	20
DSC00378	20
DSC00380	20
DSC00382	21
DSC00390	21
DSC00393	21
DSC00397	21
DSC00398	21
DSC00402	21
58	22
DSC00405	22
57	22
56	22
55	22
59	22
DJI_0081	23
DJI_0075	23

DJI_0057	23
DJI_0008	23
CONTACTS	24
Contact details	24
Telephones	24
Office hours	24
Address	24

SPECIFICATIONS

Overview

There is no 55' Express Cruiser w/ more options than this Azimut 55. She is sleek and sexy and outperforms her competitors underway. Here are the options that make her stand out in class:

- Low Hours
- Extended warranty
- Galley Up
- Seakeeper
- Williams Jet Tender
- Joystick Docking Station x 2
- Retractable Swim Platform
- Opening Hardtop

Swim Platform

- Gorgeous Teak Retractable Swim Platform
- Dinghy Garage
- Williams Mini Jet Tender
- Aft-Facing Camera
- Crew Quarters

Cockpit

- Vast Seating Area
- Fixed Hi-lo Teak Table
- Icemaker
- Wetbar and Electric Grill
- Docking Station (1 of 2)
- Fusion Stereo Control
- Teak Decking
- JL Audio Speaker

Salon

- Sliding Glass Door w/ curtain

- Leather U-Shaped Settee w/ dining table
- Hi/lo TV

Galley

- Refrigerator x 2
- Single Basin Sink
- Miele Microwave
- 2 Burner Cooktop
- Custom Silverware Drawer
- Fusion Stereo Deck

Helm

- Captain and Co-Pilot Chairs
- Forward Facing Guest Seating on Port Side
- Twin Raymarine MFD
- Raymarine Autopilot
- Seakeeper Control
- Joystick Docking Control (2 of 2)
- Bow Thruster Control
- Ignition and Throttle Controls
- AC Vents

Master Stateroom

- Massive Hull Side Windows
- Island Style Queen Bed
- Settee w/ Vanity
- Washer Dryer Combo
- Wall Mounted TV
- En-suite Head

Forward VIP

- Hull Side Windows w/ Blinds
- Overhead Hatch
- Island Style Queen Bed
- Outlets and Reading Lights

- Ensuite Head

Bunk Stateroom

- Single Berths x 2
- Hull Side Window
- Outlets and Reading Lights

Basic Information

Category: Cruising Yacht

Sub Category: Express

Model Year: 2017

Year Built: 2017

Country: United States

Dimensions

LOA: 55' (16.76mm)

Beam: 15.58

Max Draft: 4' 8" (1.42mm)

Speed, Capacities and Weight

Cruise Speed: 30 Knots Kts. (35 MPH)

Cruise Speed Range: 34

Water Capacity: 155 Gallons

Holding Tank: 46 Gal Gallons

Fuel Capacity: 423 Gal Gallons

Accommodations

Total Cabins: 3

Total Berths: 3

Total Heads: 2

Hull and Deck Information

Hull Material: Fiberglass

Engine Information

Engines: 2

Manufacturer: Volvo Penta

Engine Type: Inboard

Fuel Type: Diesel

PHOTOS

DJI_0085



DJI_0026



DJI_0090



DJI_0016



DJI_0069



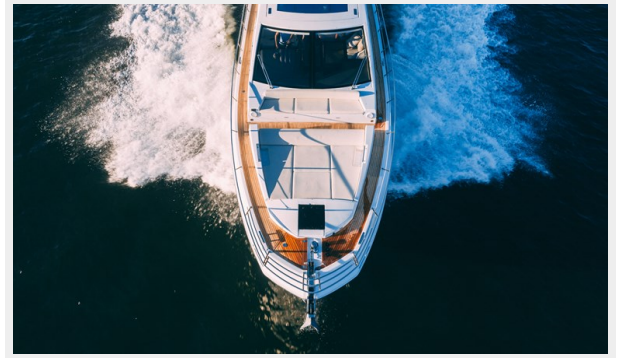
DJI_0015



DJI_0037



DJI_0052



11

DJI_0030



12



13



17



19



20



21



22



23



24



25



26



27



28



29



30



31



32



33



34



35



36



37



38



39



40



41



42



43



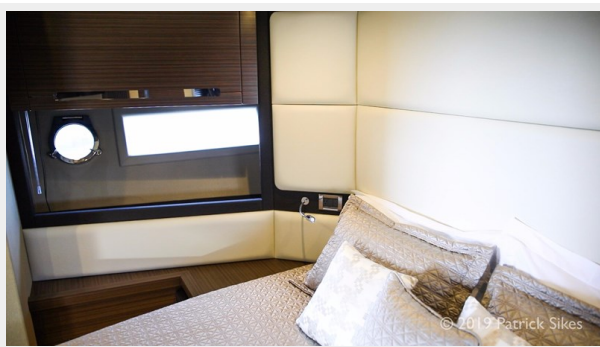
44



45



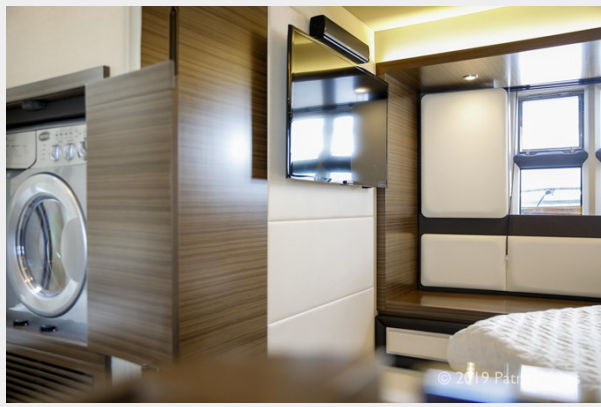
46



47



48



49



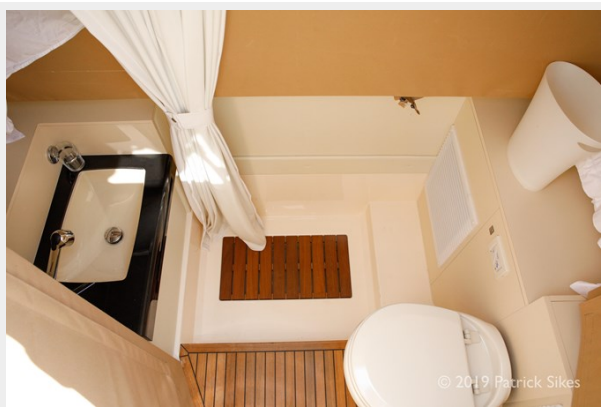
50



51



52



53



54



DSC00352



DSC00353



DSC00355



DSC00357



DSC00360



DSC00362



DSC00365



DSC00366



DSC00368



DSC00372



DSC00374



DSC00378



DSC00380



DSC00382



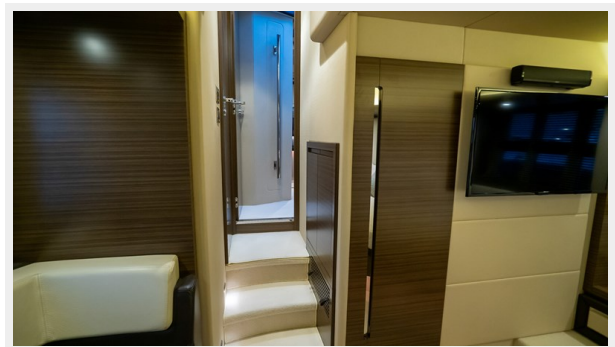
DSC00390



DSC00393



DSC00397



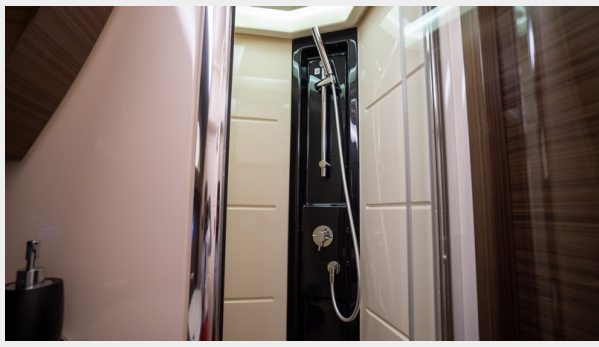
DSC00398



DSC00402



DSC00405



58



57



56



55



59



DJI_0081



DJI_0075



DJI_0057



DJI_0008



CONTACTS

Andrey Shestakov, leading yacht broker of the sales department of Shestakov Yacht Sales Inc. Shestakov Yacht Sales Inc., the official representative of the Miami/Fort Lauderdale FL headquarters.

Contact details

Email: andrey@shestakovyachtsales.com

Web: shestakovyachtsales.com/en/

Telephones

USA: +1(954)274-4435

Office hours

Monday – Saturday: **9:00 - 21:00** EDT

Sunday: **closed**

Address



Harbour Towne Marina, 850 NE 3rd St,
STE 213, Dania, FL 33004