

## ISLAND TIME — ISLAND PACKET YACHTS



**Builder:** ISLAND PACKET YACHTS

**Year Built:** 1999

**Model:** Cruising Sailboat

**Price:** PRICE ON APPLICATION

**Location:** United States

**LOA:** 39' 7" (12.06mm)

**Beam:** 13.16

**Max Draft:** 4' 7" (1.4mm)

Our experienced yacht broker, Andrey Shestakov, will help you choose and buy a yacht that best suits your needs **Island Time — ISLAND PACKET YACHTS** from our catalogue. Presently, at Shestakov Yacht Sales Inc., we have a wide variety of yachts available on our sale's list. We also work in close contact with all the big yacht manufacturers from all over the world.

If you would like to buy a yacht **Island Time — ISLAND PACKET YACHTS** or would like help answering any questions concerning purchasing, selling or chartering a yacht, please call **+1(954)274-4435**

# TABLE OF CONTENTS

---

TABLE OF CONTENTS	2
SPECIFICATIONS	4
Overview	4
Basic Information	4
Dimensions	4
Speed, Capacities and Weight	4
Accommodations	4
Hull and Deck Information	5
Engine Information	5
PHOTOS	6
Sugar Scoop Transom	6
Cutter rig with furling main and head sails	6
Boarding gate	6
Large bow platform with two anchors	6
Self tending staysail w/Hoyt Boom	6
Three anchors, two rollers and a windlass	7
Wide side decks with stainless steel handrails	7
Comfortable cockpit w/cushions	7
Helm instruments	7
Cockpit table	7
Helm seat with removable back	8
Solar panels and wind generator	8
Davits and rib	8
Outboard	8
Spacious salon	8
Fold up table and a small coffee table	9
Dining table and storage	9
Stainless steel sinks	9

Navigation station	9
Looking aft	9
Galley and a folding table	10
Plenty of counter space	10
U-shaped galley	10
Refrigerator and freezer	10
Plate and cutlery storage	10
Aft stateroom berth	10
Aft stateroom storage	11
Aft stateroom berth	11
Aft stateroom looking forward	11
Double island berth in the forward stateroom	12
Fwd stateroom starboard storage	12
Fwd stateroom port storage	12
Head vanity, storage, toilet and seat	12
Head mirror and vanity	13
There is a plastic door that closes off the shower area	13
Preventer	13
Grill	13
Super clean engine	13
Island Packet 380 Layout	13
Manufacturer Provided Image	14
<b>CONTACTS</b>	<b>15</b>
Contact details	15
Telephones	15
Office hours	15
Address	15

---

# SPECIFICATIONS

---

## Overview

---

Island Time is truly ready to go! She's in turn-key condition and fully-equipped for extended cruising. Wash/Wax (6/2020) | Generator | Solar | Wind Generator | New House Batteries | New Fiberglass Holding Tank | Refurbished Engine | Dinghy Davits | Outboard | New Air Conditioner | SSB | New Hot Water Heater | New Stove | New Heat Exchanger | In-Mast Furling Main | Water Maker | Swim Platform | Stuffing Box Repack (6/2020) | 4 winches serviced (6/2020) | Bottom Paint (10/2019)

## Basic Information

---

**Category:** Cruising Sailboat

**Model Year:** 1999

**Year Built:** 1999

**Country:** United States

## Dimensions

---

**LOA:** 39' 7" (12.06mm)

**LWL:** 32' (9.75mm)

**Beam:** 13.16

**Max Draft:** 4' 7" (1.4mm)

## Speed, Capacities and Weight

---

**Water Capacity:** 170 Gallons

**Holding Tank:** 40 Gal Gallons

**Fuel Capacity:** 85 Gal Gallons

## Accommodations

---

**Total Cabins:** 2

**Total Berths:** 7

**Total Heads:** 2

---

## Hull and Deck Information

---

**Hull Material:** Fiberglass

---

## Engine Information

---

**Engines:** 1

**Manufacturer:** Yanmar

**Engine Type:** Inboard

**Fuel Type:** Diesel

# PHOTOS

**Sugar Scoop Transom**



**Cutter rig with furling main and head sails**



**Boarding gate**



**Large bow platform with two anchors**



**Self tending staysail w/Hoyt Boom**





**Wide side decks with stainless steel handrails**



**Three anchors, two rollers and a windlass**



**Comfortable cockpit w/cushions**



**Helm instruments**



**Cockpit table**

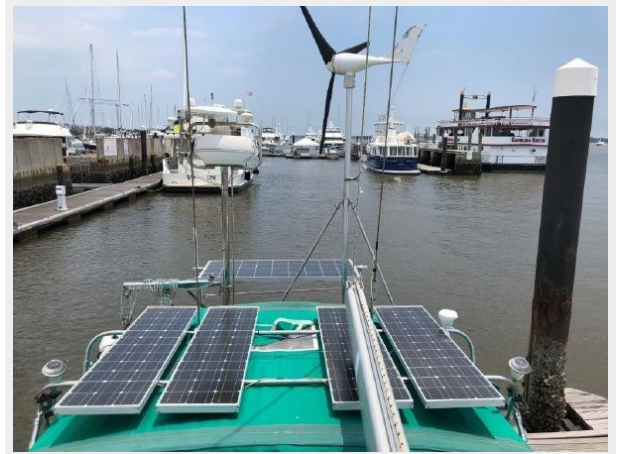




**Helm seat with removable back**



**Solar panels and wind generator**



**Davits and rib**



**Outboard**



**Spacious salon**





**Fold up table and a small coffee table**



**Dining table and storage**



**Stainless steel sinks**



**Navigation station**



**Looking aft**



**Galley and a folding table**



**Plenty of counter space**



**U-shaped galley**



**Refrigerator and freezer**



**Plate and cutlery storage**



**Aft stateroom berth**





**Aft stateroom berth**



**Aft stateroom storage**



**Aft stateroom looking forward**





**Double island berth in the forward stateroom**



**Fwd stateroom starboard storage**



**Fwd stateroom port storage**



**Head vanity, storage, toilet and seat**



### Head mirror and vanity



### There is a plastic door that closes off the shower area



### Preventer



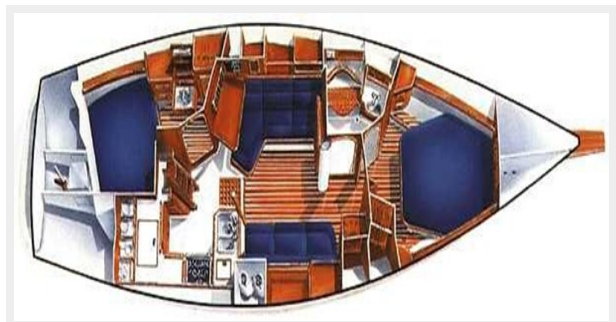
### Grill



### Super clean engine



### Island Packet 380 Layout



### Manufacturer Provided Image





# CONTACTS

---

Andrey Shestakov, leading yacht broker of the sales department of Shestakov Yacht Sales Inc. Shestakov Yacht Sales Inc., the official representative of the Miami/Fort Lauderdale FL headquarters.

## Contact details

---

Email: [andrey@shestakovyachtsales.com](mailto:andrey@shestakovyachtsales.com)

Web: [shestakovyachtsales.com/en/](http://shestakovyachtsales.com/en/)

## Telephones

---

USA: +1(954)274-4435

## Office hours

---

Monday – Saturday: **9:00 - 21:00** EDT

Sunday: **closed**

## Address

---



Harbour Towne Marina, 850 NE 3rd St,  
STE 213, Dania, FL 33004