

ENTICER — TRUMPY



Builder: TRUMPY

Year Built: 1935

Model: Motor Yacht

Price: PRICE ON APPLICATION

LOA: 85' (25.91mm)

Beam: 16

Max Draft: 4' (1.22mm)

Cruise Speed: 12 Knots Kts. (14 MPH)

Max Speed: 13 Knots Kts. (15 MPH)

Our experienced yacht broker, Andrey Shestakov, will help you choose and buy a yacht that best suits your needs **ENTICER — TRUMPY** from **our catalogue**. Presently, at **Shestakov Yacht Sales Inc.**, we have a wide variety of yachts available on **our sale's list**. We also work in close contact with all the big **yacht manufacturers** from all over the world.

If you would like to buy a yacht **ENTICER — TRUMPY** or would like help answering any questions concerning purchasing, selling or chartering a yacht, please call **+1(954)274-4435**

TABLE OF CONTENTS

TABLE OF CONTENTS	2
SPECIFICATIONS	4
Overview	4
Basic Information	4
Dimensions	4
Speed, Capacities and Weight	4
Accommodations	5
Hull and Deck Information	5
Engine Information	5
PHOTOS	6
ENTICER 1930s	6
ENTICER	6
ENTICER	6
ENTICER	6
Main Saloon	6
Fantail	6
Master Stateroom	7
Fantail	7
Guest Queen Stateroom	7
Guest Double Stateroom	7
Guest Twin Stateroom	7
Head	7
Head	8
Pilot House	8
Bow	8
Bow	8
Port Side Deck	8
Boat Deck	8

Boat Deck	9
CONTACTS	10
Contact details	10
Telephones	10
Office hours	10
Address	10

SPECIFICATIONS

Overview

ENTICER, Mathis Trumpy Contract #228.

In 2002, ENTICER had a significant refit by the capable hands at Brooklin Boatyard in Maine. She was structurally rebuilt and many of her systems renewed. In 2006, she came into the care of McMillen Yachts in Newport, RI who have since, leading up to her most recent refit in 2015, spent in excess of 2 million dollars to bring her to her current “concourse” condition. She is fully crewed and impeccably maintained.

Basic Information

Category: Motor Yacht

Model Year: 1935

Year Built: 1935

Dimensions

LOA: 85' (25.91mm)

LWL: 77' 6" (23.62mm)

Beam: 16

Max Draft: 4' (1.22mm)

Speed, Capacities and Weight

Cruise Speed: 12 Knots Kts. (14 MPH) **Max Speed:** 13 Knots Kts. (15 MPH)

Gross Tonnage: 80 Pounds

Water Capacity: 800 Gallons

Fuel Capacity: 700 Gal Gallons

Accommodations

Total Cabins: 4

Sleeps: 8

Total Heads: 4

Crew Cabin: 4

Crew Berths: 4

Crew Heads: 2

Hull and Deck Information

Hull Material: Wood

Deck Material: Wood

Hull Configuration: Full Displacement

Hull Color: White

Hull Designer: John Trumpy

Engine Information

Engines: 2

Manufacturer: John Deere

Engine Type: Inboard

Fuel Type: Diesel

PHOTOS

ENTICER 1930s



ENTICER



ENTICER



ENTICER



Main Saloon



Fantail



Fantail



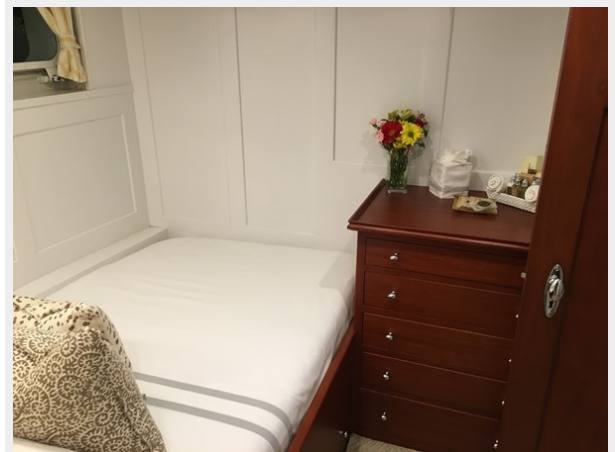
Master Stateroom



Guest Queen Stateroom



Guest Double Stateroom



Guest Twin Stateroom



Head



Head



Pilot House



Bow



Bow



Port Side Deck



Boat Deck



Boat Deck



CONTACTS

Andrey Shestakov, leading yacht broker of the sales department of Shestakov Yacht Sales Inc. Shestakov Yacht Sales Inc., the official representative of the Miami/Fort Lauderdale FL headquarters.

Contact details

Email: **andrey@shestakovyachtsales.com**

Web: shestakovyachtsales.com/en/

Telephones

USA: **+1(954)274-4435**

Office hours

Monday – Saturday: **9:00 - 21:00** EDT

Sunday: **closed**

Address



Harbour Towne Marina, 850 NE 3rd St, STE 213, Dania, FL 33004