

## NO NAME — NOR-TECH



**Builder:** NOR-TECH

**Year Built:** 2018

**Model:** Boats

**Price:** PRICE ON APPLICATION

**Location:** United States

**LOA:** 39' (11.89mm)

**Cruise Speed:** 46.92 Knots Kts. (54 MPH)

**Max Speed:** 65.17 Knots Kts. (75 MPH)

Our experienced yacht broker, Andrey Shestakov, will help you choose and buy a yacht that best suits your needs **No Name — NOR-TECH** from **our catalogue**. Presently, at **Shestakov Yacht Sales Inc.**, we have a wide variety of yachts available on **our sale's list**. We also work in close contact with all the big **yacht manufacturers** from all over the world.

If you would like to buy a yacht **No Name — NOR-TECH** or would like help answering any questions concerning purchasing, selling or chartering a yacht, please call **+1(954)274-4435**

# TABLE OF CONTENTS

TABLE OF CONTENTS	2
SPECIFICATIONS	5
Overview	5
Basic Information	5
Dimensions	5
Speed, Capacities and Weight	5
Accommodations	5
Hull and Deck Information	5
Engine Information	5
PHOTOS	6
39PORTbow6375903_20170921082813372_1_XLARGE	6
39PORTstern6375903_20170921093502021_1_XLARGE	6
39starboardBOE6375903_20170921082808925_1_XLARGE	6
resized128651.59333a513931752f5d6328f5.xl_	6
6375903_20170921083415813_1_XLARGE	6
6375903_20170921083443661_1_XLARGE	6
CCicechestSEATINGclosed6375903_20170921083003933_1_XLARGE	6
CCinterior272514_20200117093559582_25_LARGE	6
CCksecnestSEATING6375903_20170921083014213_1_XLARGE	6
CCstorage6375903_20170921083008611_1_XLARGE	6
CRUISEAIRac6375903_20170921083309917_1_XLARGE	7
DIVEdoorCLOSED6375903_20170921083055870_1_XLARGE	7
DIVEdoorOPEN2 6375903_20170921083102639_1_XLARGE	7
DIVEdoorOPEN6375903_20170921083108366_1_XLARGE	7
ENGINEcenterSTARB6375903_20170921082827921_1_XLARGE	7
ENGINES6375903_20170921082844586_1_XLARGE	7
ENGINESall46375903_20170921082822667_1_XLARGE	7
ENGINEstarboard6375903_20170921082833339_1_XLARGE	7

FORWARDseating6375903_20170921082901127_1_XLARGE	7
FORWARDseatingTWO6375903_20170921082856767_1_XLARGE	7
forwardSUNPAD6375903_20170921082910327_1_XLARGE	8
GARMINgps6375903_20170921083116696_1_XLARGE	8
garminRADARdome6375903_20170921082921861_1_XLARGE	8
GARMINvhf6375903_20170921083136883_1_XLARGE	8
hardtopFORWARDlightingBAR6375903_20170921082918690_1_XLARGE	8
HARDTOPstern6375903_20170921082945106_1_XLARGE	8
HARDTOPunder6375903_20170921082940996_1_XLARGE	8
CCentryDOORclosed6375903_20170921082949366_1_XLARGE	8
HEAD6375903_20170921083316687_1_XLARGE (1)	8
interiorQUEENNone6375903_20170921083303697_1_XLARGE	8
interiosQUEENtwo6375903_20170921083258096_1_XLARGE	9
HELMbolstersUP6375903_20170921082954175_1_XLARGE	9
HELMIMG_0011	9
HELMbolstewr6375903_20170921082959140_1_XLARGE	9
HOURSIMG_0246	9
keys6375903_20170921083321551_1_XLARGE	9
NIGHTcupholders6375903_20170921083401621_1_XLARGE	9
nightHELM6375903_20170921083409648_1_XLARGE	9
TopNIGHT6375903_20170921083406180_1_XLARGE	10
portGUNNEL6375903_20170921082936667_1_XLARGE	10
rearLEANINGpost6375903_20170921083152317_1_XLARGE	10
rigging6375903_20170921083210809_1_XLARGE	10
seadeck6375903_20170921083222499_1_XLARGE	10
seadeckSTERN6375903_20170921083205549_1_XLARGE	10
speakers6375903_20170921083240738_1_XLARGE	10
starboardGUNNEL6375903_20170921082931966_1_XLARGE	10
TRAMSOMseating6375903_20170921083031560_1_XLARGE	10

---

TRANSOMseating2 6375903_20170921083025360_1_XLARGE	10
TTOP[portstern6375903_20170921093503644_1_XLARGE (1)	11
TTOPport6375903_20170921093505342_1_XLARGE	11
TTOPstern6375903_20170921093503088_1_XLARGE	11
TTOPstarboardstern6375903_20170921093504786_1_XLARGE	11
NORTECH396375903_20170921093505962_1_XLARGE	11
CONTACTS	12
Contact details	12
Telephones	12
Office hours	12
Address	12

---

## SPECIFICATIONS

---

### Overview

---

**AS THIS IS A TRADE VESSEL AND AS AN INVENTORY BOAT AGAINST ANOTHER PURCHASE, WE HAVE TO SELL THE BOAT TO PAY FOR REPLACEMENT VESSEL, SO WE WILL ENTERTAIN REASONABLE OFFERS. PLEASE UNDERSTAND, SINCE A NEW PURCHASE FROM THIS MANUFACTURER IS SOLD OUT UNTIL NEXT YEAR LATE 2021 DELIVERY, WE KNOW THE VALUE OF OUR TRADE AS IS, RIGHT NOW, RIGHT HERE, WITH ONLY 150-HOURS ON HER TRANSFERABLE MERCURY WARRANTED QUAD 350 MERCURY VERADO OUTBOARDS, EXTENDED UNTIL 2022. SHE IS WORTH EVERY PENNY OF THE ASKING PRICE, BUT AS BROKERS, WE WILL LISTEN TO AS WE STATED.... REASONABLE CALLS.**

Save yourself a \$150,000 right out of the gate..... TREAT YOURSELF, and take a look at this boat we bought new with her now 120-hours on her 2018 QUAD[x4] MERCURY VERADO 350 power package with MERCURY Platinum warranty until 2022. Factory model year is a 2018, no wait factory order #NTB05358, production order #37-151, **HIN#US-AOV37151F718**. This right now ready Production Order #37-151, factory order taken June 5, 2017, with an original price reduction from 2017 to 2019 model year purchase price clearly identified in the original delivered price of **\$583,355** for boat only, from our original boatyard invoice. The build sheet that can be reviewed by any serious buyer, to the take her away the right-now-steal-the-boat price of **\$439,900!** All inclusive, with the FIRM sale price that includes a 21,000-lb custom 2018 MYCO Triple Axle-Trailer, the trailer alone selling for over \$22,000 added to the package is included in the deal! This package deal reducing the sale price for boat and trailer to the take away listed price that much more. Why wait a full year and more to buy a new factory build boat and spend \$150,000 mor4e, when this finished like new demonstrator boat is ready to hook up and drive her right now away to your home port dock...BOAT AND TRAILER IN ONE PRICE AS PICTURED!!!!:

**REDUCED TODAY \$60,000, COME TO THE TABLE AND MAKE A REAL OFFER**

### Basic Information

---

**Category:** Boats                      **Sub Category:** Houseboat                      **Model Year:** 2018  
**Year Built:** 2018                      **Country:** United States

### Dimensions

---

**LOA:** 39' (11.89mm)

### Speed, Capacities and Weight

---

**Cruise Speed:** 46.92 Knots Kts. (54 MPH)                      **Max Speed:** 65.17 Knots Kts. (75 MPH)                      **Gross Tonnage:** 6.25 Pounds  
**Water Capacity:** 40 Gallons                      **Holding Tank:** 20 Gal Gallons  
**Fuel Capacity:** 400 Gal Gallons

### Accommodations

---

**Total Berths:** 1                      **Sleeps:** 2                      **Total Heads:** 1

### Hull and Deck Information

---

**Hull Material:** Fiberglass

### Engine Information

---

**Engines:** 4                      **Manufacturer:** Mercury                      **Engine Type:** Outboard  
**Fuel Type:** Gas

# PHOTOS

39PORTbow6375903\_20170921082813372\_1\_XLARGE



39PORTstern6375903\_20170921093502021\_1\_XLARGE



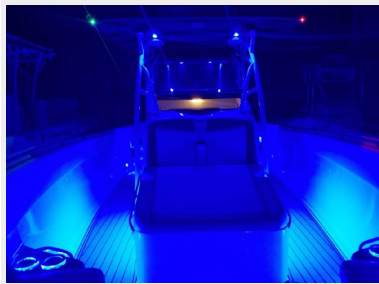
39starboardBOE6375903\_20170921082808925\_1\_XLARGE



resized128651.59333a513931752f5d6328f5.xl\_



6375903\_20170921083415813\_1\_XLARGE



6375903\_20170921083443661\_1\_XLARGE



CCicechestSEATINGclosed6375903\_20170921083003933\_1\_XLARGE



CCinterior272514\_20200117093559582\_25\_LARGE



CCksecnestSEATING6375903\_20170921083014213\_1\_XLARGE



CCstorage6375903\_20170921083008611\_1\_XLARGE





CRUISEAIRac6375903\_20170921083309917\_1\_XLARGE



DIVEdoorCLOSED6375903\_20170921083055870\_1\_XLARGE



DIVEdoorOPEN2 6375903\_20170921083102639\_1\_XLARGE



DIVEdoorOPEN6375903\_20170921083108366\_1\_XLARGE



ENGINEcenterSTARB6375903\_20170921082827921\_1\_XLARGE



ENGINES6375903\_20170921082844586\_1\_XLARGE



ENGINESall46375903\_20170921082822667\_1\_XLARGE



ENGINEstarboard6375903\_20170921082833339\_1\_XLARGE



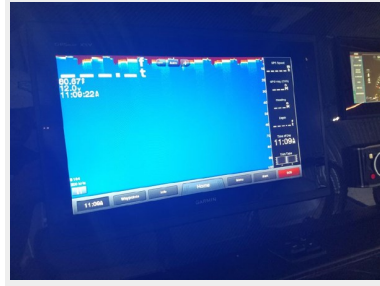
FORWARDseating6375903\_20170921082901127\_1\_XLARGE FORWARDseatingTWO6375903\_20170921082856767\_1\_XLARGE



forwardSUNPAD6375903\_20170921082910327\_1\_XLARGE



GARMINgps6375903\_20170921083116696\_1\_XLARGE



garminRADARdome6375903\_20170921082921861\_1\_XLARGE



GARMINvhf6375903\_20170921083136883\_1\_XLARGE



hardtopFORWARDlightingBAR6375903\_20170921082918690\_1\_XLARGE HARDTOPstern6375903\_20170921082945106\_1\_XLAR



HARDTOPunder6375903\_20170921082940996\_1\_XLARGE



CCentryDOORclosed6375903\_20170921082949366\_1\_XLARGE



HEAD6375903\_20170921083316687\_1\_XLARGE (1)



interiorQUEENone6375903\_20170921083303697\_1\_XLARGE





interiosQUEENTwo6375903\_20170921083258096\_1\_XLARGE



HELMbolstersUP6375903\_20170921082954175\_1\_XLARGE



HELMIMG\_0011

HELMbolstewr6375903\_20170921082959140\_1\_XLARGE



HOURSIMG\_0246



keys6375903\_20170921083321551\_1\_XLARGE



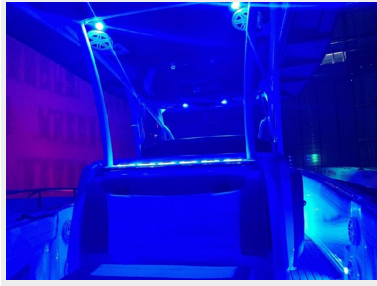
NIGHTcupholders6375903\_20170921083401621\_1\_XLARGE



nightHELM6375903\_20170921083409648\_1\_XLARGE



TTopNIGHT6375903\_20170921083406180\_1\_XLARGE



portGUNNEL6375903\_20170921082936667\_1\_XLARGE



rearLEANINGpost6375903\_20170921083152317\_1\_XLARGE



rigging6375903\_20170921083210809\_1\_XLARGE



seadeck6375903\_20170921083222499\_1\_XLARGE



seadeckSTERN6375903\_20170921083205549\_1\_XLARGE



speakers6375903\_20170921083240738\_1\_XLARGE



starboardGUNNEL6375903\_20170921082931966\_1\_XLARGE



TRANSOMseating6375903\_20170921083031560\_1\_XLARGE



TRANSOMseating2 6375903\_20170921083025360\_1\_XLARGE



TTOP[portstern6375903\_20170921093503644\_1\_XLARGE (1)



TTOPport6375903\_20170921093505342\_1\_XLARGE



TTOPstern6375903\_20170921093503088\_1\_XLARGE



TTOPstarboardstern6375903\_20170921093504786\_1\_XLARGE



NORTECH396375903\_20170921093505962\_1\_XLARGE



---

## CONTACTS

---

Andrey Shestakov, leading yacht broker of the sales department of Shestakov Yacht Sales Inc. Shestakov Yacht Sales Inc., the official representative of the Miami/Fort Lauderdale FL headquarters.

### Contact details

---

Email:  
**andrey@shestakovyachtsales.com**

Web: [shestakovyachtsales.com/en/](http://shestakovyachtsales.com/en/)

### Telephones

---

USA: **+1(954)274-4435**

### Office hours

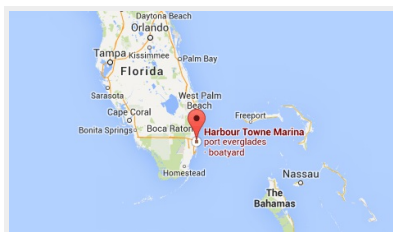
---

Monday – Saturday: **9:00 - 21:00** EDT

Sunday: **closed**

### Address

---



Harbour Towne Marina, 850 NE 3rd  
St, STE 213, Dania, FL 33004