

2021 ASTONDOA 110 CENTURY — ASTONDOA



Builder: ASTONDOA

Year Built: 2021

Model: Motor Yacht

Price: Price on Application

Location: United States

LOA: 109' 11" (33.5mm)

Beam: 23.25

Min Draft: 5' 11" (1.8mm)

Cruise Speed: 18 Knots Kts. (21 MPH)

Max Speed: 21 Knots Kts. (24 MPH)

Our experienced yacht broker, Andrey Shestakov, will help you choose and buy a yacht that best suits your needs **2021 Astondoa 110 Century — ASTONDOA** from our catalogue. Presently, at Shestakov Yacht Sales Inc., we have a wide variety of yachts available on our sale's list. We also work in close contact with all the big yacht manufacturers from all over the world.

If you would like to buy a yacht **2021 Astondoa 110 Century — ASTONDOA** or would like help answering any questions concerning purchasing, selling or chartering a yacht, please call **+1(954)274-4435**

TABLE OF CONTENTS

TABLE OF CONTENTS	2
SPECIFICATIONS	4
Overview	4
Basic Information	6
Dimensions	6
Speed, Capacities and Weight	6
Accommodations	6
Hull and Deck Information	7
Engine Information	7
PHOTOS	8
3	8
2	8
4	8
5	8
7	8
6	8
8	9
9	9
10	9
11	9
12	9
13	9
14	10
15	10
CONTACTS	11
Contact details	11
Telephones	11
Office hours	11

Address	11
---------	----

SPECIFICATIONS

Overview

Commemorating 100 years of shipbuilding, Astondoa launched its new Century series in 2016.

Combining fine craftsmanship with cutting-edge technology in a large GRP based package, the new Astondoa 110 Century is its flagship superyacht which is sure to get noticed wherever she goes.

Beautifully built and tailored to each owner, the Astondoa 110 Century is a yacht that breaks all the rules for styling and layout and offers a bounty of clever featured.

ON DECK

The Century 110 has three decks, each with carefully laid out social spaces that will provide over two dozen guest with intimate conversation nooks.

Located between the helm and the aft terrace, the sizable sky lounge offers 270-degree views and will be a favorite spot aboard. Here, guest can visit the open aft deck with its outdoor galley and seating, or may enjoy the air conditioned comfort inside, escaping the heat, rain or wind.

The state-of-the art helm station has excellent views forward and to the sides and sits just ahead of the interior skylounge. From here, the captain commands a pair of 2030hp MTU diesel upgradable to 2217hp engines.

The 110 Century can cruise at 20 knots where a range of up to 600 nautical miles will ensure guests can cruise the Caribbean or Mediterranean in self-sufficient comfort. Also, with a fuel

capacity of 3,169 gallons, she's ready to explore distant horizons.

The Astondoa 110 Century can carry many toys. On the bow, there is covered storage to carry two 3-person PWCs and aft, an eight-seat Williams jet boat tender can be stored in the garage.

SUMPTUOUS INTERIOR SPACES

Open spaces are strongly emphasized from the panoramic windows, that bring the outdoors in, to the open greenroom feel where the salon flows naturally into the formal indoor dining room.

From modern minimalist to traditional tastes, Astondoa interiors ensure owners are comfortable in their home away from home and lack nothing on extended cruises.

The galley is separate from the main living area and offers a small casual dining space where owners can grab a snack or the crew can work in private to create elaborate masterpieces.

Although customizable, the basic Astondoa 110 Century layout is 4+1 with four guest rooms on the lower deck amidships and a full-beam master suite on the main deck with plenty of light provided by the large windows both port and starboard.

THE COOL FACTOR

Carbon fiber is used throughout the Astondoa 110 Century for structural needs, such as the sky lounge and pilothouses soles, and as a doctor feature. The carbon fiber high prices does not stop Astondoa to use this glossy black fiber to create a "cool factor" that is priceless.

FREEDOM & PEACE-OF-MIND

Astondoa has a network of authorized service facilities on five continents so no matter where the

Century ventures, assistance is within reach, ensuring a better and more comprehensive owner experience.

THE ASTONDOA DIFFERENCE

Combining luxury, a unique layout, top-speed performance, a sexy profile and a top-notch service network are why Astondoa has not only survived, but thrived, as a luxury European builder for a century.

Basic Information

Category: Motor Yacht

Model Year: 2021

Year Built: 2021

Country: United States

Dimensions

LOA: 109' 11" (33.5mm)

Beam: 23.25

Min Draft: 5' 11" (1.8mm)

Speed, Capacities and Weight

Cruise Speed: 18 Knots Kts. (21 MPH)

Max Speed: 21 Knots Kts. (24 MPH)

Water Capacity: 1003 Gallons

Fuel Capacity: 3619 Gal Gallons

Accommodations

Total Cabins: 5

Total Heads: 5

Hull and Deck Information

Hull Material: Fiberglass

Engine Information

Engines: 1

Manufacturer: MTU

Engine Type: Inboard

Fuel Type: Diesel

PHOTOS

2



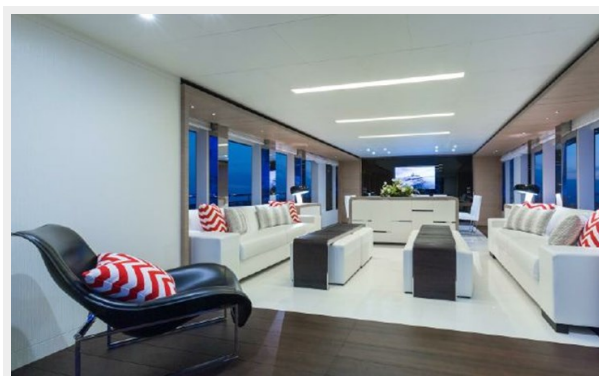
3



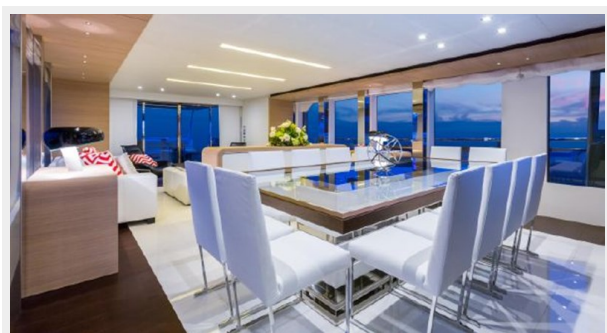
4



5



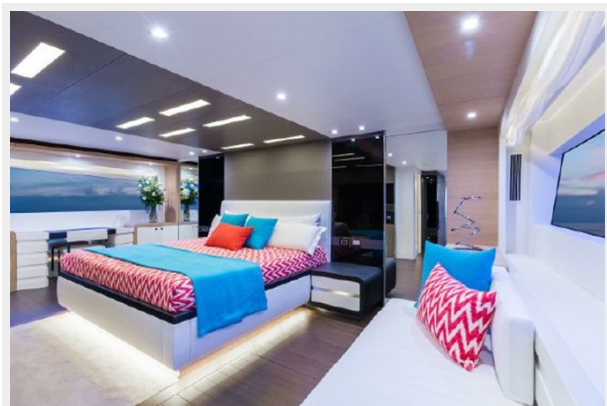
6



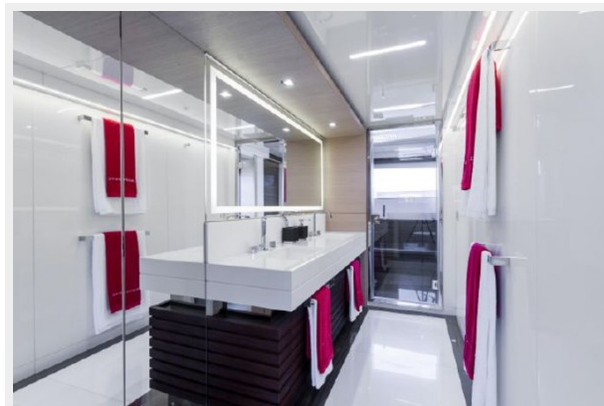
7



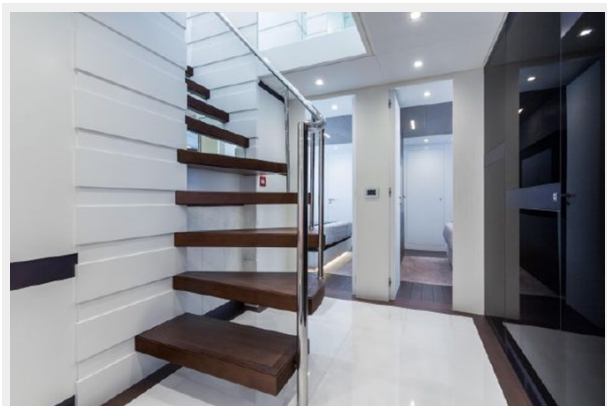
8



9



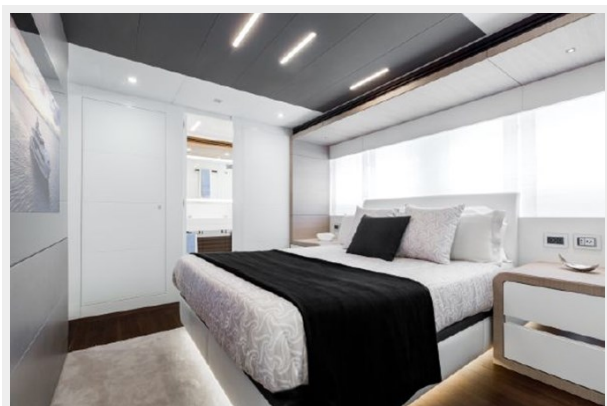
10



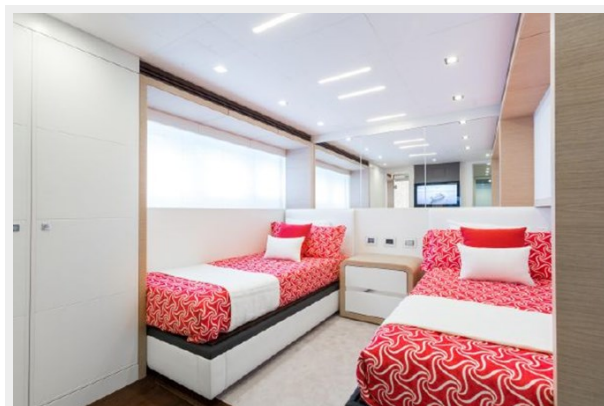
11



12



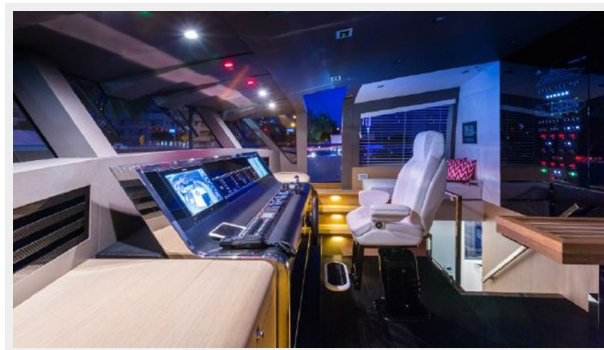
13



14



15



CONTACTS

Andrey Shestakov, leading yacht broker of the sales department of Shestakov Yacht Sales Inc. Shestakov Yacht Sales Inc., the official representative of the Miami/Fort Lauderdale FL headquarters.

Contact details

Email: **andrey@shestakovyachtsales.com**

Web: shestakovyachtsales.com/en/

Telephones

USA: **+1(954)274-4435**

Office hours

Monday – Saturday: **9:00 - 21:00 EDT**

Sunday: **closed**

Address



Harbour Towne Marina, 850 NE 3rd St,
STE 213, Dania, FL 33004