

## 2021 ASTONDOA 655 COUPE — ASTONDOA



**Builder:** ASTONDOA

**Year Built:** 2021

**Model:** Motor Yacht

**Price:** Price on Application

**Location:** United States

**LOA:** 62' (18.9mm)

**Beam:** 20.58

**Min Draft:** 3' (0.91mm)

**Cruise Speed:** 25 Knots Kts. (29 MPH)

**Max Speed:** 30 Knots Kts. (35 MPH)

Our experienced yacht broker, Andrey Shestakov, will help you choose and buy a yacht that best suits your needs 2021 Astondoa 655 Coupe — ASTONDOA from our catalogue. Presently, at Shestakov Yacht Sales Inc., we have a wide variety of yachts available on our sale's list. We also work in close contact with all the big yacht manufacturers from all over the world.

If you would like to buy a yacht 2021 Astondoa 655 Coupe — ASTONDOA or would like help answering any questions concerning purchasing, selling or chartering a yacht, please call +1(954)274-4435

# TABLE OF CONTENTS

TABLE OF CONTENTS	2
SPECIFICATIONS	5
Overview	5
Basic Information	5
Dimensions	5
Speed, Capacities and Weight	6
Accommodations	6
Hull and Deck Information	6
Engine Information	6
PHOTOS	7
3	7
2	7
4	7
5	7
6	7
7	7
8	8
9	8
10	8
11	8
12	8
13	8
14	9
15	9
16	9
17	9
18	9
19	9

---

20	10
21	10
22	10
23	10
24	10
25	10
26	11
27	11
28	11
29	11
30	11
31	11
32	12
33	12
34	12
35	12
36	12
37	12
38	13
39	13
40	13
41	13
42	13
43	13
45	14
44	14
46	14
47	14
49	14

---

---

48	14
50	15
51	15
52	15
53	15
54	15
CONTACTS	16
Contact details	16
Telephones	16
Office hours	16
Address	16

---

# SPECIFICATIONS

---

## Overview

---

The Astondoa 655 Coupe yacht is the new flagship in the builder's four-model Coupe series, ranging from a 35-footer up to a 75-footer. The 655 Coupe is a race-boat-inspired cruiser with a futuristic look. This express cruiser catches your gaze with a wave-slicing "inverted delta bow." An aggressively raked front window and hardtop give her the appearance of being in motion even while still, and a series of angular hull-side windows lower her profile and add a flood of natural light belowdecks. When it comes power, the Astondoa 655 has three engine options. Twin 900 hp Volvo Penta IPS1200s are standard, but twin 1,200 hp MAN V8s or 1,150 hp Caterpillar C18s are optional. She has a modified-V hull form with 15 degrees aft deadrise. The 655 Coupe reportedly makes 33 knots on the top end with a 25-knot cruising speed. In addition to style and performance, the 655 is set up to entertain. The salon's hi-lo carbon fiber table, is surrounded on three sides by a U-shaped settee. The layout works great for cocktail hour, formal dining or just casual coffee and breakfast after a night on the hook. The galley is down to port from the salon and is suitable for large or small meal prep. Leather, Italian marble, stainless steel and carbon fiber give the yacht's interior an upscale feel at every turn. Alfresco fun awaits at the foredeck sun pads as well as an aft-deck sun pad and one on the hardtop too. For guests who want some shade, the teak cockpit's L-shaped seating is protected by an extended overhang, and is a great spot for that sundowner while taking in the view. Sliding glass doors disappear belowdecks to open up the cockpit and salon into one long entertainment space, from the starboard-side helm to that aft-deck sunpad. Three staterooms and three heads easily accommodate the cruising family for a summer getaway. The full-beam master is amidships. Forward and to starboard are twin berths for the kids, and the forepeak VIP has a step-up berth.

## Basic Information

---

**Category:** Motor Yacht

**Model Year:** 2021

**Year Built:** 2021

**Country:** United States

## Dimensions

---

**LOA:** 62' (18.9mm)

**Beam:** 20.58

**Min Draft:** 3' (0.91mm)

---

## Speed, Capacities and Weight

---

**Cruise Speed:** 25 Knots Kts. (29 MPH)

**Max Speed:** 30 Knots Kts. (35 MPH)

**Water Capacity:** 185 Gallons

**Fuel Capacity:** 845 Gal Gallons

---

## Accommodations

---

**Total Cabins:** 3

**Total Heads:** 3

---

## Hull and Deck Information

---

**Hull Material:** Fiberglass

---

## Engine Information

---

**Engines:** 1

**Manufacturer:** Volvo Penta

**Engine Type:** Inboard

**Fuel Type:** Diesel

# PHOTOS

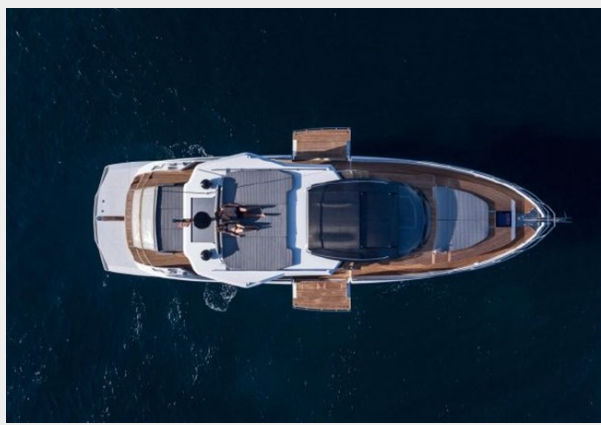
2



3



4



5



6



7



8



9



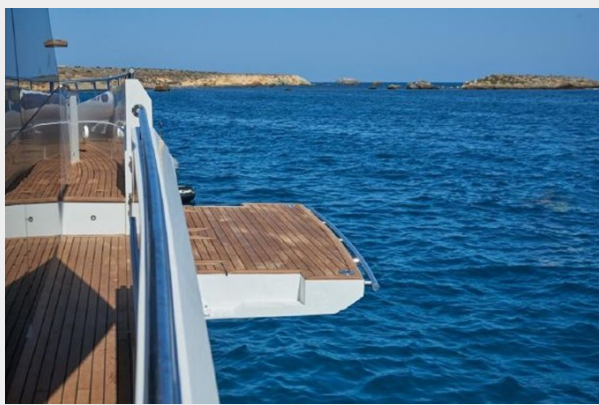
10



11



12



13





14



15



16



17



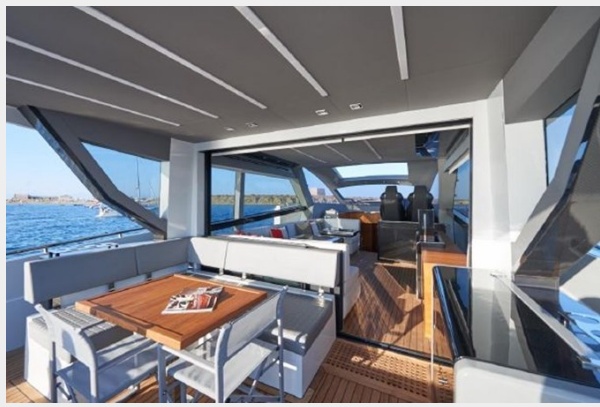
18



19



20



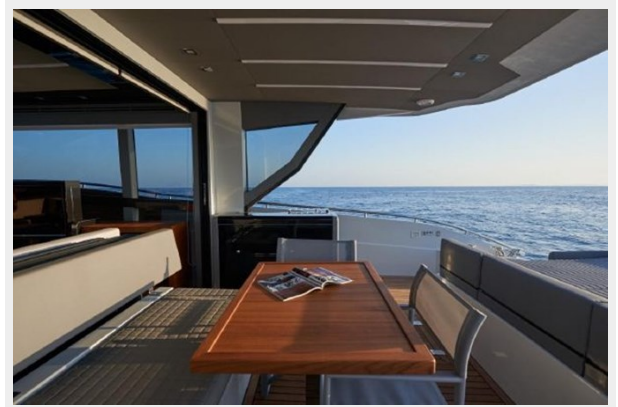
21



22



23



24



25



26



27



28



29



30



31



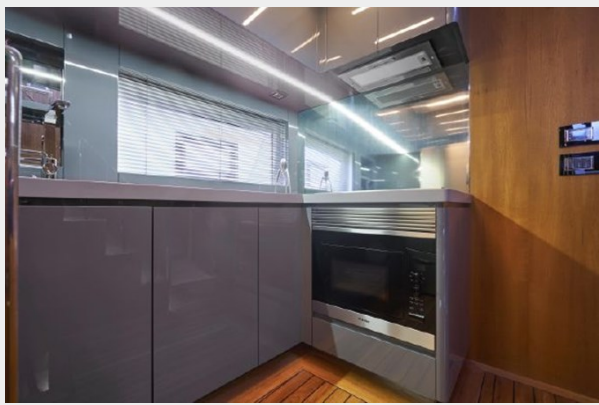
32



33



34



35



36



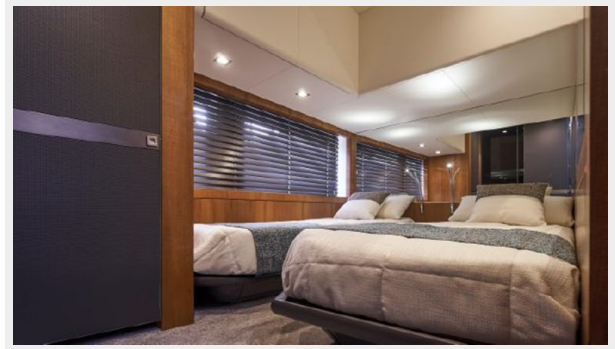
37



38



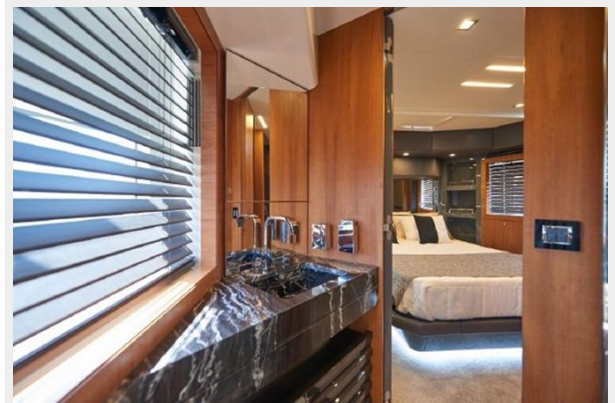
39



40



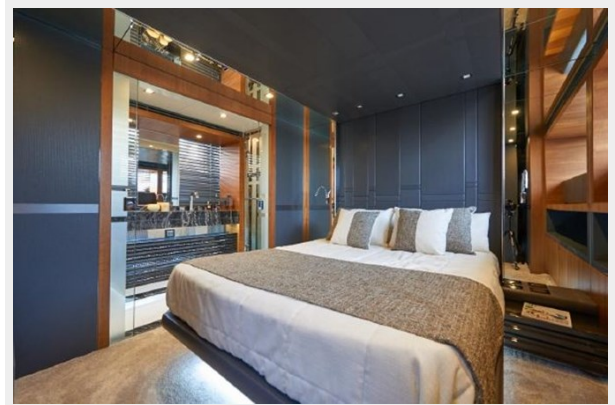
41



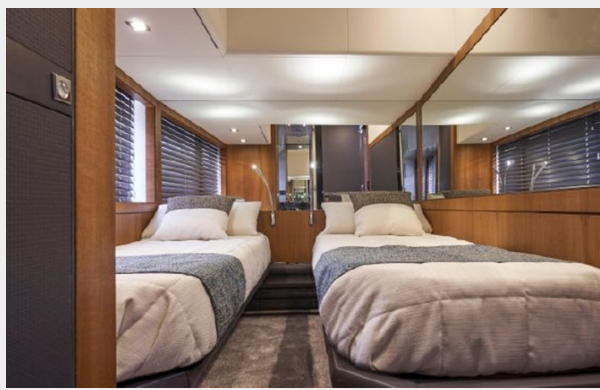
42



43



44



45



46



47



48



49



50



51



52



53



54



# CONTACTS

---

Andrey Shestakov, leading yacht broker of the sales department of Shestakov Yacht Sales Inc. Shestakov Yacht Sales Inc., the official representative of the Miami/Fort Lauderdale FL headquarters.

## Contact details

---

Email: [andrey@shestakovyachtsales.com](mailto:andrey@shestakovyachtsales.com)

Web: [shestakovyachtsales.com/en/](http://shestakovyachtsales.com/en/)

## Telephones

---

USA: +1(954)274-4435

## Office hours

---

Monday – Saturday: **9:00 - 21:00** EDT

Sunday: **closed**

## Address

---



Harbour Towne Marina, 850 NE 3rd St,  
STE 213, Dania, FL 33004