

2021 ASTONDOA 52 FLYBRIDGE — ASTONDOA



Builder: ASTONDOA

Year Built: 2021

Model: Flybridge

Price: Price on Application

Location: United States

LOA: 52' 5" (15.98mm)

Beam: 15.25

Max Draft: 3' 2" (0.97mm)

Cruise Speed: 25 Knots Kts. (29 MPH)

Max Speed: 30 Knots Kts. (35 MPH)

Our experienced yacht broker, Andrey Shestakov, will help you choose and buy a yacht that best suits your needs 2021 Astondoa 52 Flybridge — ASTONDOA from our catalogue. Presently, at Shestakov Yacht Sales Inc., we have a wide variety of yachts available on our sale's list. We also work in close contact with all the big yacht manufacturers from all over the world.

If you would like to buy a yacht 2021 Astondoa 52 Flybridge — ASTONDOA or would like help answering any questions concerning purchasing, selling or chartering a yacht, please call +1(954)274-4435

TABLE OF CONTENTS

TABLE OF CONTENTS	2
SPECIFICATIONS	6
Overview	6
Basic Information	6
Dimensions	7
Speed, Capacities and Weight	7
Accommodations	7
Hull and Deck Information	7
Engine Information	7
PHOTOS	8
2	8
3	8
4	8
5	8
6	8
7	8
8	9
9	9
10	9
11	9
12	9
13	9
14	10
15	10
16	10
17	10
18	10
19	10

21	11
20	11
22	11
23	11
24	11
25	11
26	12
27	12
28	12
29	12
30	12
31	12
32	13
33	13
34	13
35	13
37	13
36	13
38	14
39	14
40	14
41	14
42	14
43	14
45	15
44	15
46	15
47	15
48	15

49	15
50	16
51	16
52	16
53	16
54	16
55	16
56	17
57	17
58	17
59	17
60	17
61	17
62	17
63	17
64	18
65	18
66	18
67	18
68	18
69	18
70	18
71	18
72	19
73	19
74	19
75	19
76	19
77	19

78	19
CONTACTS	20
Contact details	20
Telephones	20
Office hours	20
Address	20

SPECIFICATIONS

Overview

Luxury for yachters who enjoy the easy handling and dock manners of a mid-sized yacht: This 52' yacht is compact, sporty and versatile, offering a social, breezy flybridge, a large deck and submersible swim platform, and a bright spacious interior, utilizing natural light. Though classic in construction, the exterior's contours, and modern flybridge lines update the look and enhance its cruising ability—an excellent choice for day boating with family and friends, island hopping, or overnighting. G Marine worked with the shipyard to customize the model, adding functional features like the transom garage, outdoor flybridge kitchen, ample lounge areas, and a modern carbon fiber lower helm.

Natural wood, leather, and top quality decorative features are found throughout the vessel, creating a relaxed atmosphere of minimalist luxury while incorporating three spacious cabins and heads, a top deck helm, galley, and salon. The interior spaces are skillfully designed to create a restful and intimate vibe, combining aesthetics with function. • Hardtop flybridge has a retractable sunroof and companionway seating. Forward-facing comfortable seats offer thrilling rides while the generous C-shaped seating around the dining table converts to a sun pad. • Three staterooms, two with en suite heads include a forward, full-beam master, a guest queen, and twin cabins. Crew quarters or a fourth stateroom are options. • The large bow sun pad invites lounging; exit the aft galley through folding cockpit doors to the large teak deck with seating and a wooden dining/cocktail table. • The submersible bathing platform makes water entering and exiting effortless. The sizable garage accommodates a personal watercraft or tender. • Powered by twin Volvo Penta Inboard D11 725 HP, this sporty V-hull has a top speed of 28 knots and cruising speed of 25 knots.

Basic Information

Category: Flybridge

Sub Category: Flybridge

Model Year: 2021

Year Built: 2021

Country: United States

Dimensions

LOA: 52' 5" (15.98mm)

Beam: 15.25

Max Draft: 3' 2" (0.97mm)

Speed, Capacities and Weight

Cruise Speed: 25 Knots Kts. (29 MPH)

Max Speed: 30 Knots Kts. (35 MPH)

Water Capacity: 159 Gallons

Holding Tank: 75 Gal Gallons

Fuel Capacity: 476 Gal Gallons

Accommodations

Total Cabins: 3

Total Berths: 4

Total Heads: 3

Hull and Deck Information

Hull Material: Fiberglass

Hull Configuration: Deep Vee

Engine Information

Engines: 2

Manufacturer: Volvo Penta

Engine Type: Inboard

Fuel Type: Diesel

PHOTOS

2



3



4



5



6



7



8



9



10



11



12



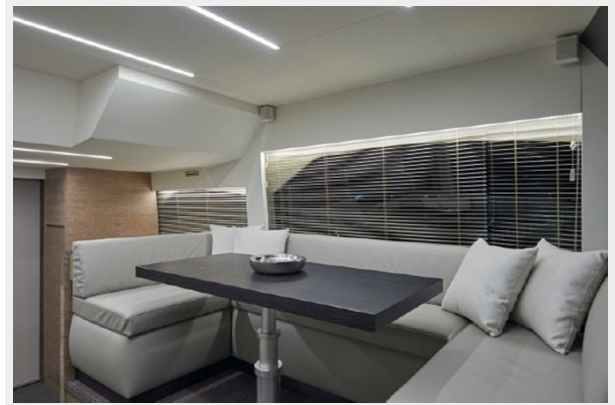
13



14



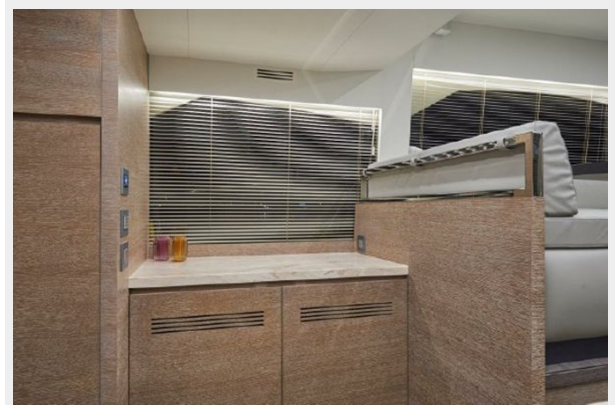
15



16



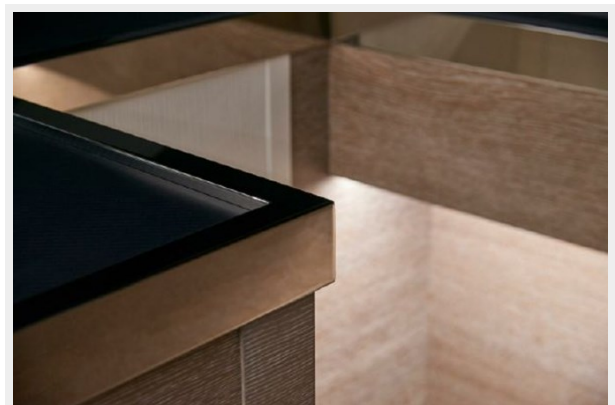
17



18



19



20



21



22



23



24



25



26



27



28



29



30



31



32



33



34



35



36



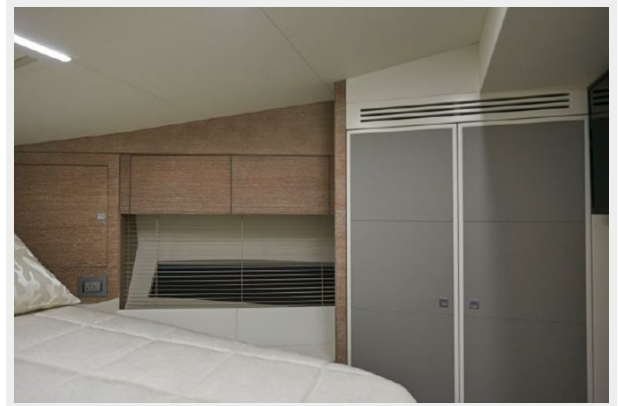
37



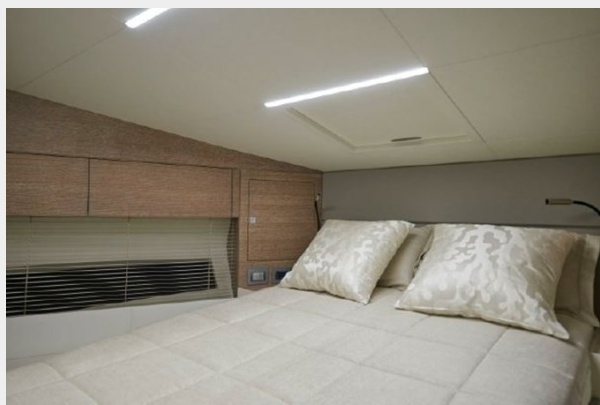
38



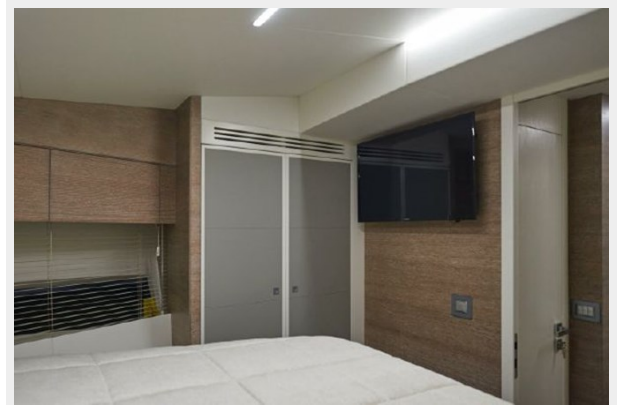
39



40



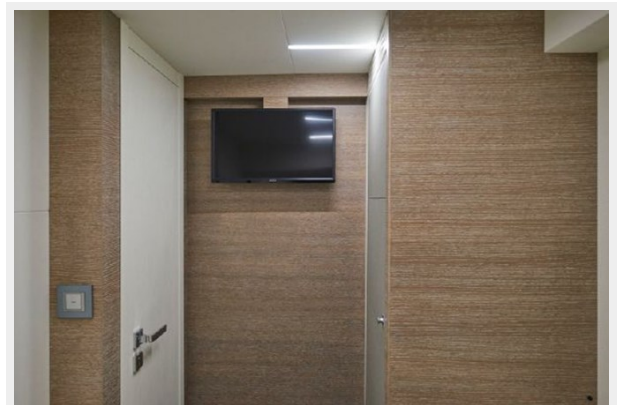
41



42



43



44



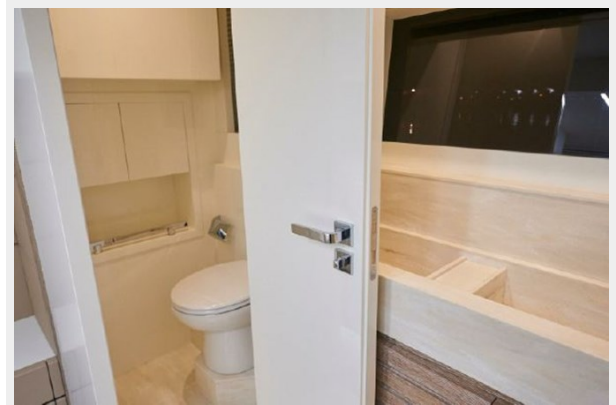
45



46



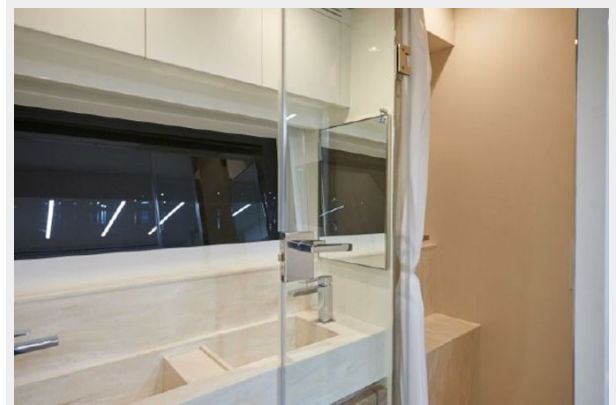
47



48



49



50



51



52



53



54



55



56



57



58



59



60



61



62



63



64



65



66



67



68



69



70



71



72



73



74



75



76



77



78



CONTACTS

Andrey Shestakov, leading yacht broker of the sales department of Shestakov Yacht Sales Inc. Shestakov Yacht Sales Inc., the official representative of the Miami/Fort Lauderdale FL headquarters.

Contact details

Email: andrey@shestakovyachtsales.com

Web: shestakovyachtsales.com/en/

Telephones

USA: +1(954)274-4435

Office hours

Monday – Saturday: **9:00 - 21:00** EDT

Sunday: **closed**

Address



Harbour Towne Marina, 850 NE 3rd St,
STE 213, Dania, FL 33004