

## YACHTI ANA — AZIMUT YACHTS



**Builder:** AZIMUT YACHTS

**Year Built:** 2015

**Model:** Motor Yacht

**Price:** PRICE ON APPLICATION

**Location:** Italy

**LOA:** 77' 6" (23.6mm)

**Beam:** 18.24

**Max Draft:** 7' 9" (2.35mm)

**Cruise Speed:** 25 Knots Kts. (29 MPH)

**Max Speed:** 33 Knots Kts. (38 MPH)

Our experienced yacht broker, Andrey Shestakov, will help you choose and buy a yacht that best suits your needs **Yacht Ana — AZIMUT YACHTS** from our catalogue. Presently, at Shestakov Yacht Sales Inc., we have a wide variety of yachts available on our sale's list. We also work in close contact with all the big yacht manufacturers from all over the world.

If you would like to buy a yacht **Yacht Ana — AZIMUT YACHTS** or would like help answering any questions concerning purchasing, selling or chartering a yacht, please call **+1(954)274-4435**

---

# TABLE OF CONTENTS

---

TABLE OF CONTENTS	2
SPECIFICATIONS	3
Overview	3
Basic Information	3
Dimensions	3
Speed, Capacities and Weight	4
Accommodations	4
Hull and Deck Information	4
Engine Information	4
PHOTOS	5
YACHTI ANA GA (3 cabins)-01	11
CONTACTS	12
Contact details	12
Telephones	12
Office hours	12
Address	12

# SPECIFICATIONS

## Overview

This Azimut 77S blends a sporty look with elegance, built with high performance materials. The open spaces offer sunbathing areas at bow, in the aft cockpit and on the Sport-flybridge which includes a full equipped second helm station with an additional two seater bench next to the pilot seat. An additional outdoor space of 8 square meters is offered by the pivoting stern platform which can take a load of 720kg. The garage can host a 3.85m jet tender and a jet-ski. Large windows flood the inside of the salon and its customized Bar with light and offer a 360° view, creating a constant dialogue between the interior and exterior. The dining table for 8 in the Cockpit area can be shaded by an electronic soft-top. A private dinette area is situated in the full beam Master cabin, as well as a separate walk-in closet and the big squared windows offer a breathtaking view of the sea on the lower deck level. The Vip and Guest Cabin are bathed in natural light thanks to their large panoramic windows with separate openable portholes. Produced by top Italian craftsmen, the interior materials of the living areas are a mix of glossy Zebrano wood, light decorative panels in Renolit woodstock with ocean drive design including 3 dimensional elements and leather details, in all of the heads the furniture tops are in shiny black crystal and the showers have marble inlays. The professional galley is equipped with Miele appliances and hosts an underfloor storage/pantry for medium-long cruises. The triple Volvo Penta diesel engines provide excellent performance and maximum comfort on board thanks to the IPS transmission. **Features:-** Built and delivered in 2015- Vat paid- Sole owner- 3 Cabin layout with lower deck salon instead of 4th Cabin- 2 x Seakeeper stabilizers- Spacious bow area with 8-seat sofa, coffee table and an electro-hydraulic bimini top to provide relaxing shade- Large pivoting swim platform- Wide uninterrupted side windows allowing 360° view- Sliding roof top- Full equipped Sport-fly with second helm station- Customized Crestron system- Full beam Master cabin

## Basic Information

**Category:** Motor Yacht

**Model Year:** 2015

**Year Built:** 2015

**Country:** Italy

## Dimensions

**LOA:** 77' 6" (23.6mm)

**LWL:** 77' 3" (23.54mm)

**Beam:** 18.24

**Max Draft:** 7' 9" (2.35mm)

---

## Speed, Capacities and Weight

---

**Cruise Speed:** 25 Knots Kts. (29 MPH)

**Max Speed:** 33 Knots Kts. (38 MPH)

**Gross Tonnage:** 50.77 Pounds

**Water Capacity:** 1100 Gallons

**Holding Tank:** 188.88 Gal Gallons

**Fuel Capacity:** 1083.11 Gal Gallons

**Fuel Consumption:** 92.46 Gal Gallons

---

## Accommodations

---

**Total Cabins:** 3

**Total Berths:** 6

**Sleeps:** 6

**Crew Cabin:** 3

**Crew Berths:** 3

---

## Hull and Deck Information

---

**Hull Material:** GRP

**Hull Configuration:** Planing

**Hull Color:** Brown/Bronze

**Exterior Designer:** Stefano Righini

**Interior Designer:** Carlo Galeazzi

---

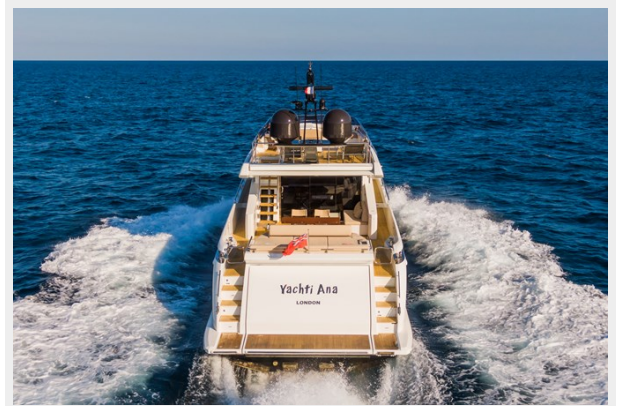
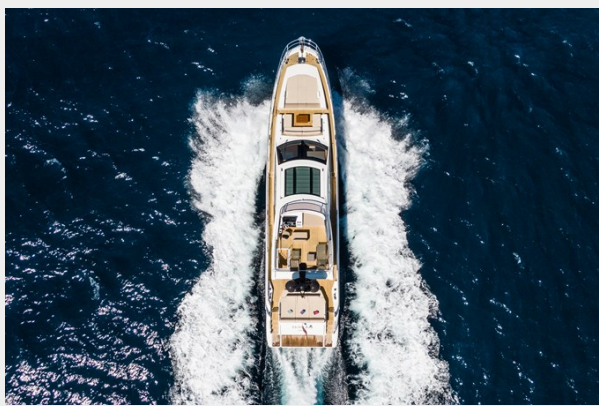
## Engine Information

---

**Engines:** 3

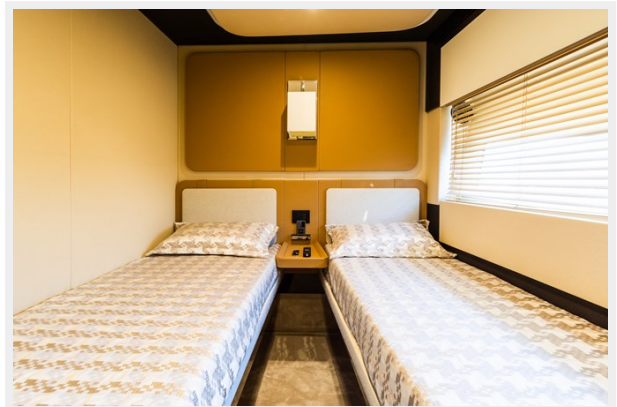
**Manufacturer:** Volvo Penta

# PHOTOS

















### YACHTI ANA GA (3 cabins)-01



# CONTACTS

---

Andrey Shestakov, leading yacht broker of the sales department of Shestakov Yacht Sales Inc. Shestakov Yacht Sales Inc., the official representative of the Miami/Fort Lauderdale FL headquarters.

## Contact details

---

Email: [andrey@shestakovyachtsales.com](mailto:andrey@shestakovyachtsales.com)

Web: [shestakovyachtsales.com/en/](http://shestakovyachtsales.com/en/)

## Telephones

---

USA: +1(954)274-4435

## Office hours

---

Monday – Saturday: **9:00 - 21:00** EDT

Sunday: **closed**

## Address

---



Harbour Towne Marina, 850 NE 3rd St,  
STE 213, Dania, FL 33004