

LIGHTNING — BENETEAU



Builder: BENETEAU

Year Built: 2007

Model: Cruising Sailboat

Price: PRICE ON APPLICATION

Location: United States

LOA: 50' (15.24mm)

Beam: 16

Max Draft: 6' 6" (1.98mm)

Our experienced yacht broker, Andrey Shestakov, will help you choose and buy a yacht that best suits your needs **Lightning — BENETEAU** from our catalogue. Presently, at Shestakov Yacht Sales Inc., we have a wide variety of yachts available on our sale's list. We also work in close contact with all the big yacht manufacturers from all over the world.

If you would like to buy a yacht **Lightning — BENETEAU** or would like help answering any questions concerning purchasing, selling or chartering a yacht, please call **+1(954)274-4435**

TABLE OF CONTENTS

TABLE OF CONTENTS	2
SPECIFICATIONS	5
Overview	5
Basic Information	5
Dimensions	5
Speed, Capacities and Weight	6
Accommodations	6
Hull and Deck Information	6
Engine Information	6
PHOTOS	7
2	7
3	7
4	7
5	7
7	8
6	8
8	8
9	8
10	9
11	9
12	9
13	9
14	9
15	9
16	10
17	10
18	10
19	10

20	10
21	10
22	11
23	11
24	11
25	11
26	11
27	11
28	12
29	12
30	12
31	12
32	12
33	12
34	13
35	13
36	13
37	13
39	13
38	13
41	14
40	14
42	14
43	14
CONTACTS	15
Contact details	15
Telephones	15
Office hours	15
Address	15

SPECIFICATIONS

Overview

This 2007 Beneteau 50 represents an incredible value in a true blue water cruiser loaded with options and kept in incredible condition. "Lightning" is one of the Cyclades 50 series built by Beneteau in France. This line was designed and built for use in the charter fleets, and is much more heavily built to allow for charter abuse. "Lightning" is one of the only examples of this boat NEVER PUT INTO CHARTER, and even better, after her original owner sailed her from France to the Caribbean, she was put onto FRESH WATER in Lake Champlain for 8 years. The condition of this boat simply has to be seen to be appreciated. No gelcoat damage, almost no chips or dings on her, and very light use. She is LOADED with options:

- Onan 9kw Genset (120v)
- Watermaker
- Air Conditioning
- Bow Thruster
- Primary and Halyard winches are Harken Electric 2 speed
- Custom 1000lb rated davits and CARIBE C12 Console RIB INCLUDED
- Dual wind generators on davits
- Updated Raymarine electronics 2013 including Radar, e127 at helm, and st6000 autopilot.
- Bimini and Dodger with zip in connector in excellent condition
- 260 Gallon water capacity, 116 gallon diesel capacity
- Custom Solent rig featuring 2 roller furling jibs on Profurl furlers
- Yanmar Shaft Drive 110hp engine with Folding Propeller, built in oil change pump

Basic Information

Category: Cruising Sailboat

Model Year: 2007

Year Built: 2007

Country: United States

Dimensions

LOA: 50' (15.24mm)

Beam: 16

Max Draft: 6' 6" (1.98mm)

Speed, Capacities and Weight

Water Capacity: 256 Gallons

Holding Tank: 63 Gal Gallons

Fuel Capacity: 116 Gal Gallons

Accommodations

Total Cabins: 3

Total Berths: 3

Total Heads: 3

Hull and Deck Information

Hull Material: Fiberglass

Engine Information

Engines: 1

Manufacturer: Yanmar

Engine Type: Inboard

Fuel Type: Diesel

PHOTOS

2



3



4



5



6



7



8



9



10



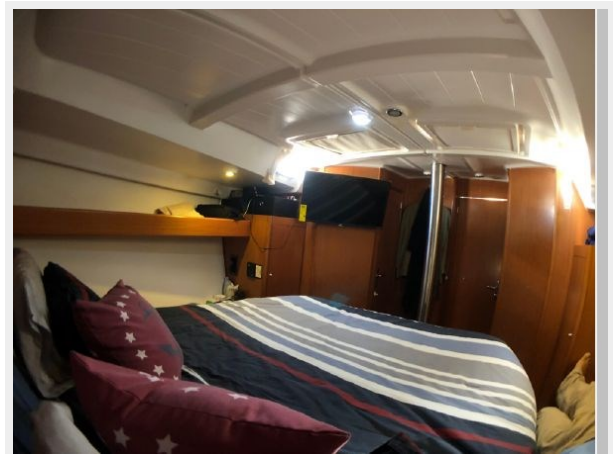
11



12



13



14



15



16



17



18



19



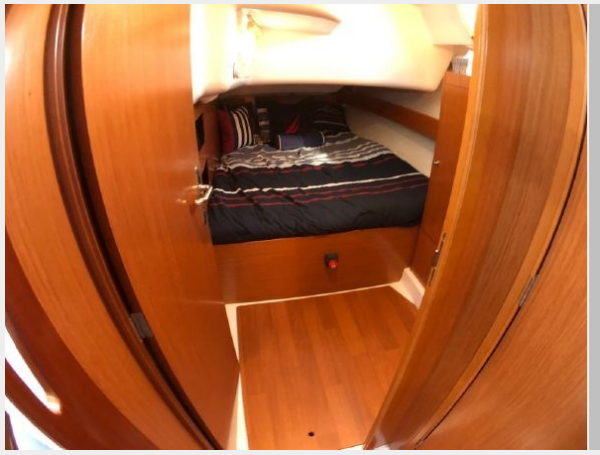
20



21



22



23



24



25



26



27



28



29



30



31



32



33



34



35



36



37



38



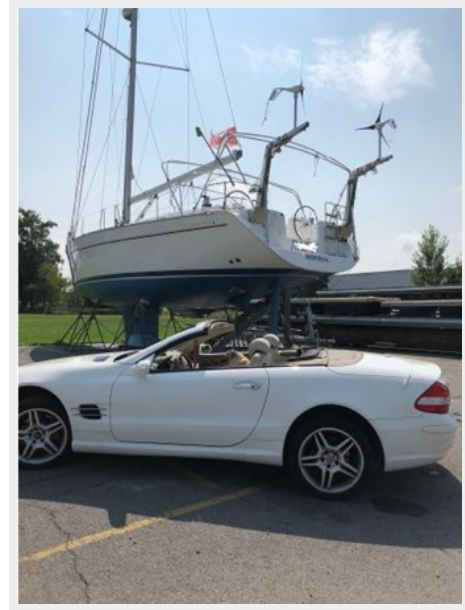
39



40



41



42



43



CONTACTS

Andrey Shestakov, leading yacht broker of the sales department of Shestakov Yacht Sales Inc. Shestakov Yacht Sales Inc., the official representative of the Miami/Fort Lauderdale FL headquarters.

Contact details

Email: andrey@shestakovyachtsales.com

Web: shestakovyachtsales.com/en/

Telephones

USA: +1(954)274-4435

Office hours

Monday – Saturday: **9:00 - 21:00** EDT

Sunday: **closed**

Address



Harbour Towne Marina, 850 NE 3rd St,
STE 213, Dania, FL 33004