

1987 WARWICK — WARWICK



Builder: WARWICK

Year Built: 1987

Model: Sloop

Price: PRICE ON APPLICATION

Location: United States

LOA: 47' (14.33mm)

Beam: 13.5

Min Draft: 7' (2.13mm)

Our experienced yacht broker, Andrey Shestakov, will help you choose and buy a yacht that best suits your needs 1987 Warwick — WARWICK from our catalogue. Presently, at Shestakov Yacht Sales Inc., we have a wide variety of yachts available on our sale's list. We also work in close contact with all the big yacht manufacturers from all over the world.

If you would like to buy a yacht 1987 Warwick — WARWICK or would like help answering any questions concerning purchasing, selling or chartering a yacht, please call +1(954)274-4435

TABLE OF CONTENTS

TABLE OF CONTENTS	2
SPECIFICATIONS	5
Overview	5
Basic Information	5
Dimensions	5
Speed, Capacities and Weight	6
Accommodations	6
Hull and Deck Information	6
Engine Information	6
PHOTOS	7
2	7
3	7
4	7
5	7
6	8
7	8
8	8
9	8
10	8
11	8
12	9
13	9
14	9
15	9
16	9
17	9
18	10
19	10

20	10
21	10
22	10
23	10
24	11
25	11
26	11
27	11
28	11
29	11
30	12
31	12
32	12
33	12
34	12
35	12
37	13
36	13
38	13
39	13
40	14
41	14
42	14
43	14
44	14
45	14
46	15
47	15
48	15

49	15
50	15
51	15
52	16
53	16
54	16
55	16
56	16
57	16
58	17
CONTACTS	18
Contact details	18
Telephones	18
Office hours	18
Address	18

SPECIFICATIONS

Overview

This 1987 Allen Warwick 47' designed custom sloop must be seen to be believed. This is a racer/cruiser truly built for offshore conditions, winning numerous awards in her history including a record Newport to Bermuda passage in only 77 hours. Construction features include longitudinal stringers every 12" along the length of the boat, providing for a remarkably rigid and stiff vessel. This vessel is loaded with thoughtful features to provide every amenity while sailing offshore. Some recent work and additions - 2017 Replace SSB with Icom M802 and AT140 tuner 2017 Replace VHF with Icom M506 with remote mic 2017 Replace autopilot with Raymarine EV-400 system 2017 Replace all instruments with Raymarine I50 2017 Replace roller furler with Schaefer 3000 2018 Replace inverter/charger with Xantrex 458 2000w/100a 2018 Complete teak deck refurbishment including ~400lf of plank replacement 2018 Remove/inspect/rebed all chainplates 2018 new custom teak cockpit table Please contact the listing broker for a full list of specifications in addition to what can be included as part of this advertisement - it's a long list.

Basic Information

Category: Sloop

Sub Category: Sloop

Model Year: 1987

Year Built: 1987

Country: United States

Dimensions

LOA: 47' (14.33mm)

Beam: 13.5

Min Draft: 7' (2.13mm)

Speed, Capacities and Weight

Water Capacity: 100 Gallons

Holding Tank: 40 Gal Gallons

Fuel Capacity: 120 Gal Gallons

Accommodations

Total Cabins: 2

Total Berths: 2

Total Heads: 2

Hull and Deck Information

Hull Material: Fiberglass

Engine Information

Engines: 1

Manufacturer: Cummins

Engine Type: Inboard

Fuel Type: Diesel

PHOTOS

2



3



4



5



6



7



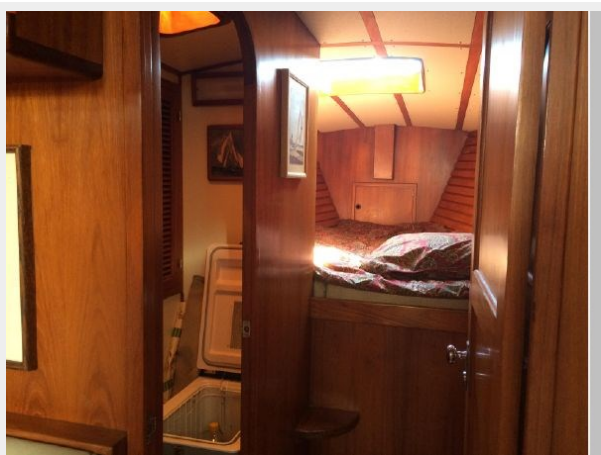
8



9



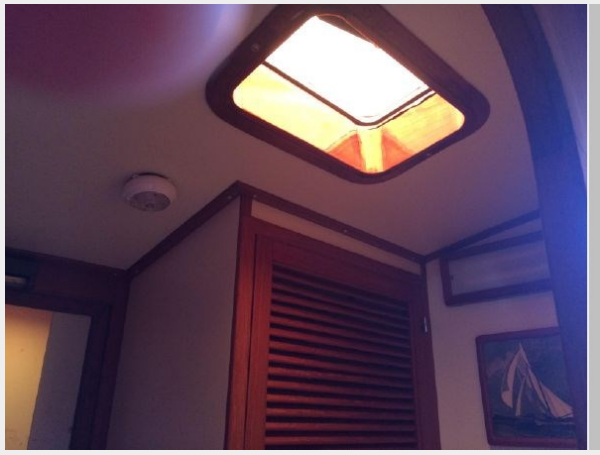
10



11



12



13



14



15



16



17



18



19



20



21



22



23



24



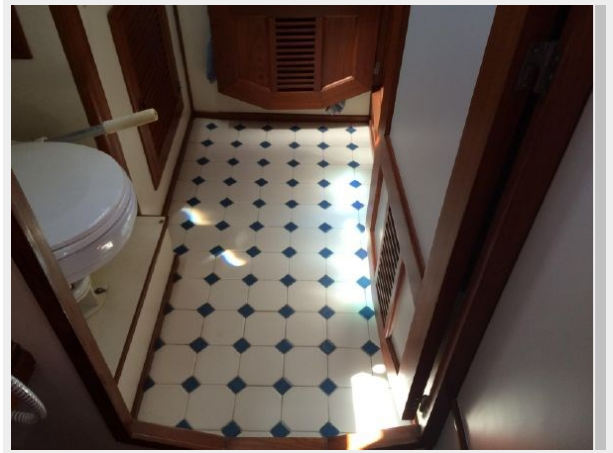
25



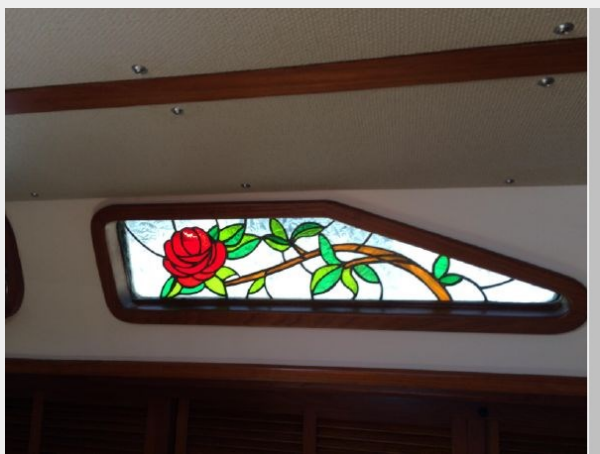
26



27



28



29



30



31



32



33



34



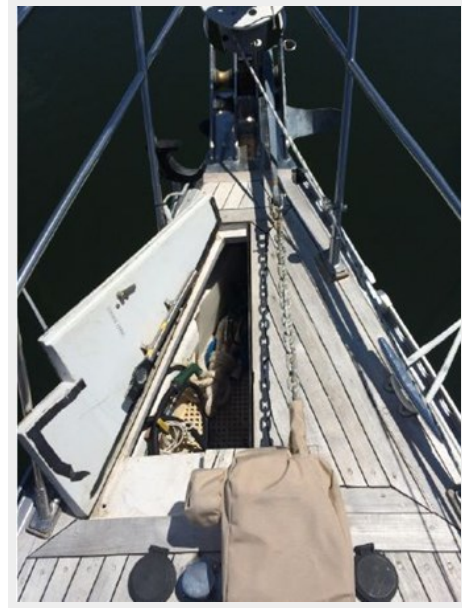
35



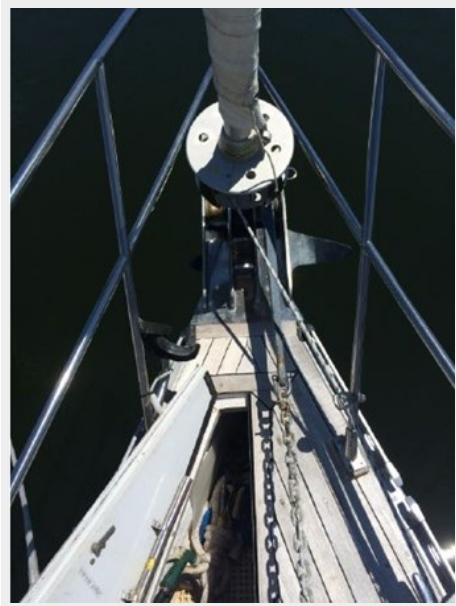
36



37



38



39



40



41



42



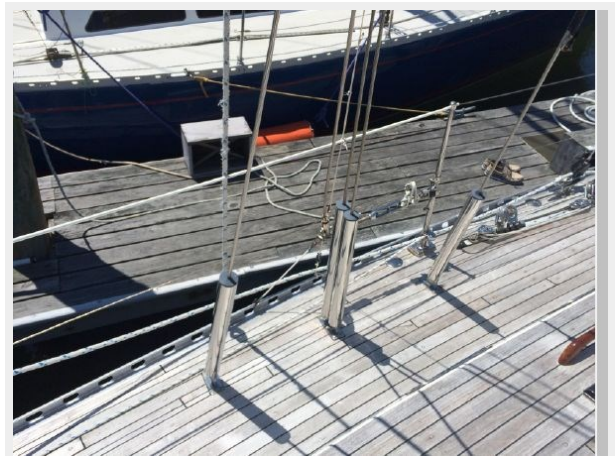
43



44



45



46



47



48



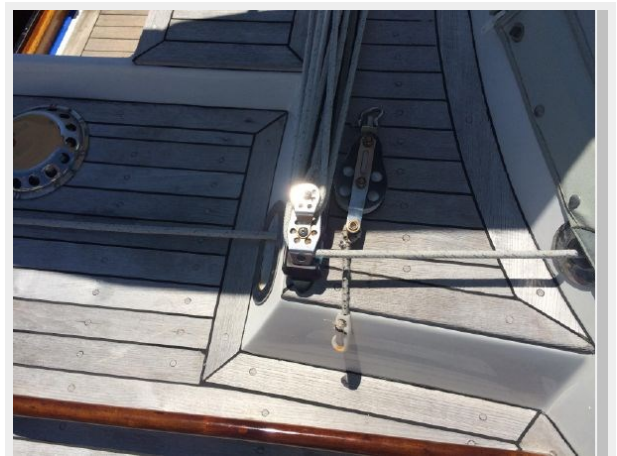
49



50



51



52



53



54



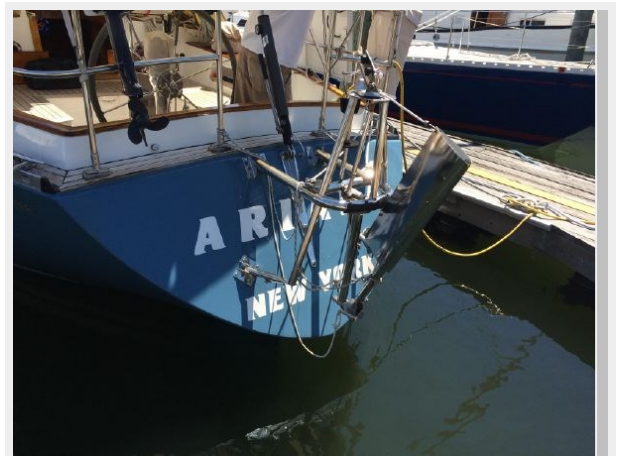
55



56



57



58



CONTACTS

Andrey Shestakov, leading yacht broker of the sales department of Shestakov Yacht Sales Inc. Shestakov Yacht Sales Inc., the official representative of the Miami/Fort Lauderdale FL headquarters.

Contact details

Email: andrey@shestakovyachtsales.com

Web: shestakovyachtsales.com/en/

Telephones

USA: +1(954)274-4435

Office hours

Monday – Saturday: **9:00 - 21:00** EDT

Sunday: **closed**

Address



Harbour Towne Marina, 850 NE 3rd St,
STE 213, Dania, FL 33004