

## **BARGES — COMMERCIAL MARINE**



**Builder:** COMMERCIAL MARINE

**Year Built:** 1972

**Model:** Commercial Vessel

**Price:** **PRICE ON APPLICATION**

**LOA:** 100' (30.48mm)

**Beam:** 35

**Min Draft:** 4' (1.22mm)

**Max Draft:** 9' (2.74mm)

Our experienced yacht broker, Andrey Shestakov, will help you choose and buy a yacht that best suits your needs **Barges — COMMERCIAL MARINE** from our catalogue. Presently, at **Shestakov Yacht Sales Inc.**, we have a wide variety of yachts available on our **sale's list**. We also work in close contact with all the big **yacht manufacturers** from all over the world.

If you would like to buy a yacht **Barges — COMMERCIAL MARINE** or would like help answering any questions concerning purchasing, selling or chartering a yacht, please call **+1(954)274-4435**

---

# TABLE OF CONTENTS

---

TABLE OF CONTENTS	2
SPECIFICATIONS	3
Overview	3
Basic Information	3
Dimensions	3
Hull and Deck Information	3
Engine Information	3
PHOTOS	4
IMG_2664	4
GOPR1810	4
GOPR1811	4
GOPR1812	4
GOPR1808	4
IMG_2671	4
IMG_2670	5
CONTACTS	6
Contact details	6
Telephones	6
Office hours	6
Address	6

---

# SPECIFICATIONS

---

## Overview

---

Ishkeesh Marine Services has a special opportunity to facilitate the sale of (16) - 100' X 35' steel barges in the San Francisco Bay Area. These Barges are ex-Military (US Navy) lash/hopper style barges and are ideal for transporting goods, construction for floating homes, clubhouses, floating medical and/or hotels buildings, and moorage. Owner wants these barges sold fast and will extend discounts for quantity sales. Full specifications and blueprints are available upon request. We can assist with logistics as far as showing. transport etc.\*\*Custom design/build Services available upon request for qualified buyers, restrictions apply\*\*For Further details and to express formal interest, Please contact Ishkeesh Marine Services.

## Basic Information

---

**Category:** Commercial Vessel

**Sub Category:** Barge

**Model Year:** 1972

**Year Built:** 1972

## Dimensions

---

**LOA:** 100' (30.48mm)

**Beam:** 35

**Min Draft:** 4' (1.22mm)

**Max Draft:** 9' (2.74mm)

## Hull and Deck Information

---

**Hull Material:** Steel

**Deck Material:** Steel

## Engine Information

---

**Engines:** 1

**Manufacturer:** None

# PHOTOS

**IMG\_2664**



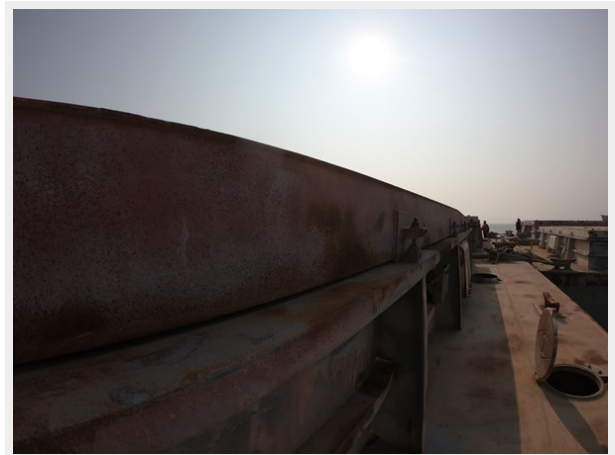
**GOPR1810**



**GOPR1811**



**GOPR1812**



**GOPR1808**



**IMG\_2671**



IMG\_2670



# CONTACTS

---

Andrey Shestakov, leading yacht broker of the sales department of Shestakov Yacht Sales Inc. Shestakov Yacht Sales Inc., the official representative of the Miami/Fort Lauderdale FL headquarters.

## Contact details

---

Email: **andrey@shestakovyachtsales.com**

Web: [shestakovyachtsales.com/en/](https://shestakovyachtsales.com/en/)

## Telephones

---

USA: **+1(954)274-4435**

## Office hours

---

Monday – Saturday: **9:00 - 21:00** EDT

Sunday: **closed**

## Address

---



Harbour Towne Marina, 850 NE 3rd St, STE 213, Dania, FL 33004