

## WHIM — MARSHALL BOAT CO.



**Builder:** MARSHALL BOAT CO.

**Year Built:** 1991

**Model:** Cruising Sailboat

**Price:** PRICE ON APPLICATION

**LOA:** 22' (6.71m)

**Beam:** 10.66

**Min Draft:** 2' (0.61m)

**Cruise Speed:** 3 Knots Kts. (3 MPH)

Our experienced yacht broker, Andrey Shestakov, will help you choose and buy a yacht that best suits your needs **Whim — MARSHALL BOAT CO.** from our catalogue. Presently, at Shestakov Yacht Sales Inc., we have a wide variety of yachts available on our sale's list. We also work in close contact with all the big yacht manufacturers from all over the world.

If you would like to buy a yacht **Whim — MARSHALL BOAT CO.** or would like help answering any questions concerning purchasing, selling or chartering a yacht, please call **+1(954)274-4435**

---

# TABLE OF CONTENTS

---

TABLE OF CONTENTS	2
SPECIFICATIONS	5
Overview	5
Basic Information	5
Dimensions	5
Speed, Capacities and Weight	5
Accommodations	5
Hull and Deck Information	5
Engine Information	6
PHOTOS	7
IMG_0075 (1)	7
IMG_1886 (1)	7
IMG_0723	7
IMG_1844	7
IMG_1840	7
IMG_1839	7
IMG_1846	8
IMG_2090	8
IMG_8623	8
IMG_8622	8
IMG_8624	8
IMG_8625	8
IMG_8626	9
IMG_8627	9
IMG_8628	9
IMG_8629	9
IMG_8630	9
IMG_8631	9

---

IMG_8632	10
IMG_8633	10
IMG_8634	10
IMG_8636	10
IMG_8637	11
IMG_8638	11
IMG_8641	11
IMG_8642	11
IMG_8643	12
IMG_8644	12
IMG_8645	12
IMG_8647	12
IMG_8648	13
IMG_8649	13
IMG_8620	13
Marshall cat	13
IMG_8621	14
IMG_1832	14
IMG_1833	14
IMG_1836	14
IMG_1838	15
IMG_1837	15
IMG_1842	15
IMG_1843	15
IMG_1845	16
IMG_1847	16
IMG_1848	16
IMG_1850 (2)	16
IMG_1852	17

---

---

IMG_1853	17
IMG_0722 (2)	17
IMG_1854	17
IMG_0725	18
CONTACTS	19
Contact details	19
Telephones	19
Office hours	19
Address	19

---

# SPECIFICATIONS

---

## Overview

---

Marshall Sloop Rig catboat in excellent / as new condition after full refit. In the water in New Jersey and fully rigged.

## Basic Information

---

**Category:** Cruising Sailboat

**Model Year:** 1991

**Year Built:** 1991

**Refit Type:** Full

## Dimensions

---

**LOA:** 22' (6.71mm)

**Beam:** 10.66

**Min Draft:** 2' (0.61mm)

## Speed, Capacities and Weight

---

**Cruise Speed:** 3 Knots Kts. (3 MPH)

**Water Capacity:** 12 Gallons

**Holding Tank:** 10 Gal Gallons

**Fuel Capacity:** 20 Gal Gallons

## Accommodations

---

**Total Cabins:** 1

## Hull and Deck Information

---

**Hull Material:** Fiberglass

**Deck Material:** Fiberglass

**Hull Color:** Blue

**Hull Designer:** Marshall

---

## Engine Information

---

**Engines:** 1

**Manufacturer:** Yanmar

# PHOTOS

IMG\_0075 (1)



IMG\_1886 (1)



IMG\_0723



IMG\_1844



IMG\_1840



IMG\_1839



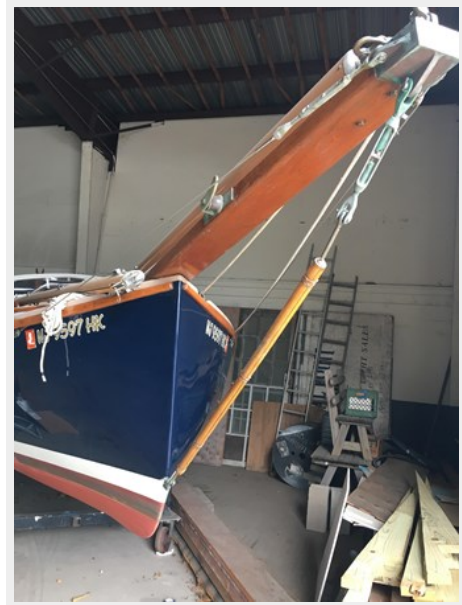
IMG\_1846



IMG\_2090



IMG\_8623



IMG\_8622



IMG\_8624



IMG\_8625





IMG\_8626



IMG\_8627



IMG\_8628



IMG\_8629



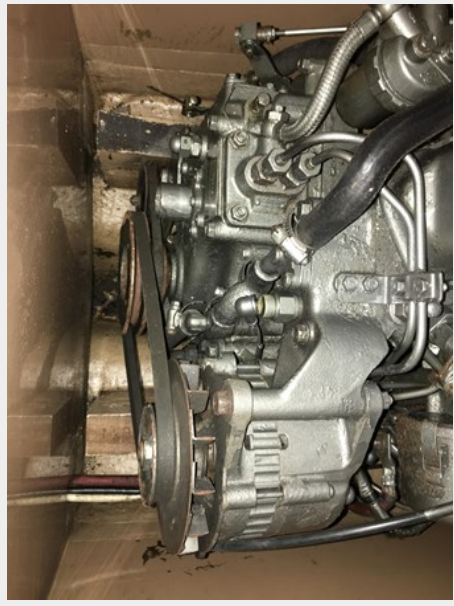
IMG\_8630



IMG\_8631



IMG\_8632



IMG\_8633



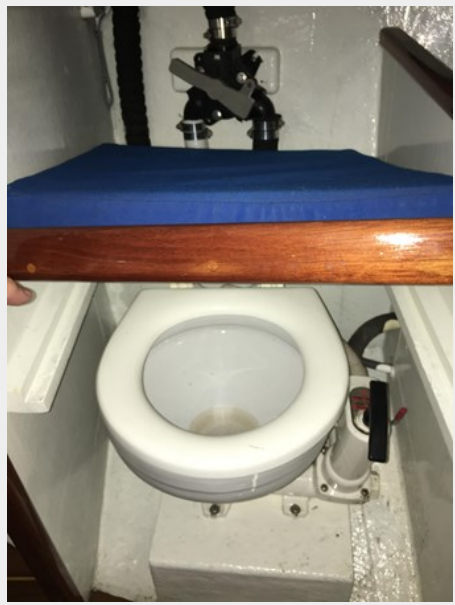
IMG\_8634



IMG\_8636



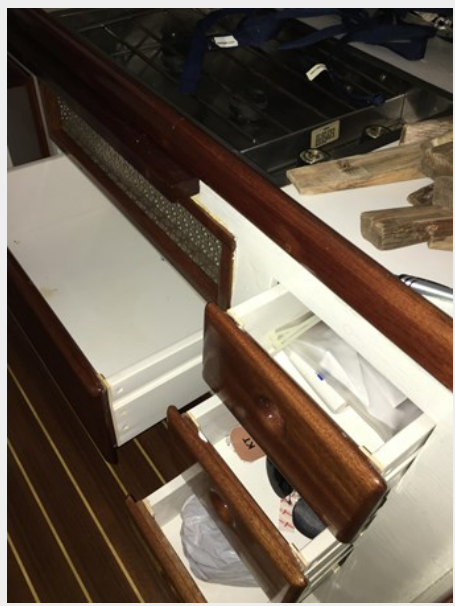
IMG\_8637



IMG\_8638



IMG\_8641



IMG\_8642



IMG\_8643



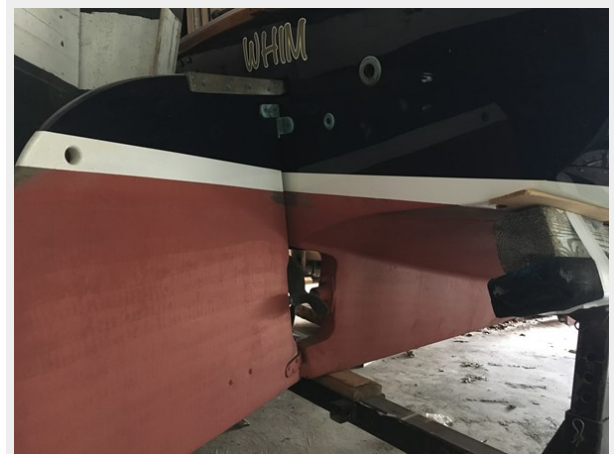
IMG\_8644



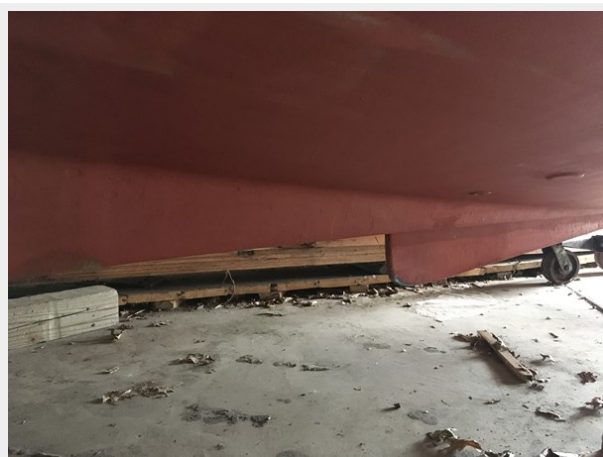
IMG\_8645



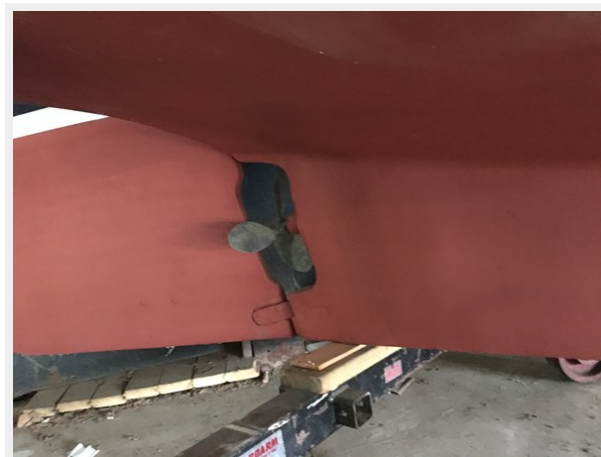
IMG\_8647



**IMG\_8648**



**IMG\_8649**

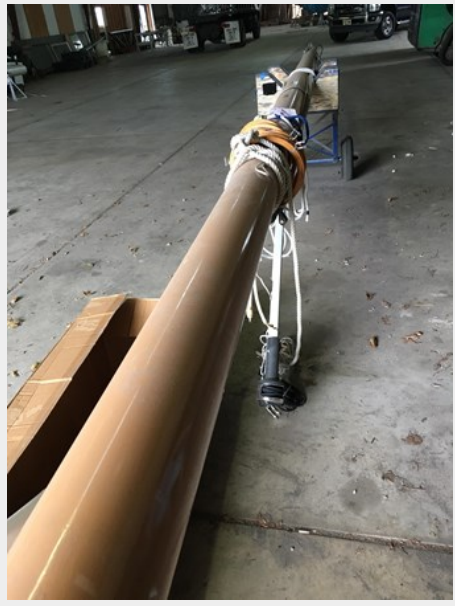


**IMG\_8620**

**Marshall cat**



IMG\_8621



IMG\_1832



IMG\_1833



IMG\_1836



IMG\_1837



IMG\_1838



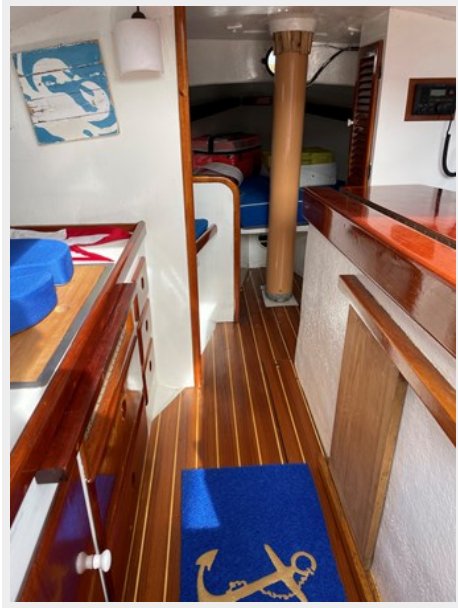
IMG\_1842



IMG\_1843



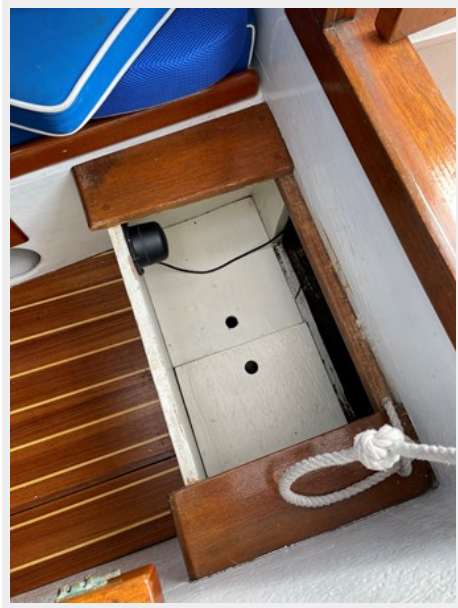
IMG\_1845



IMG\_1847



IMG\_1848



IMG\_1850 (2)

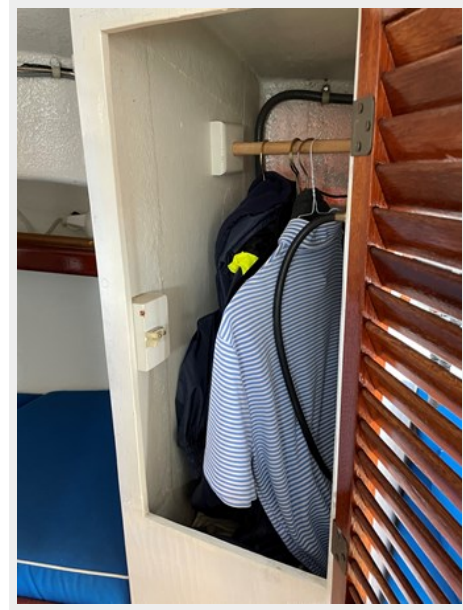




IMG\_1852



IMG\_1853



IMG\_0722 (2)



IMG\_1854



IMG\_0725



---

# CONTACTS

---

Andrey Shestakov, leading yacht broker of the sales department of Shestakov Yacht Sales Inc. Shestakov Yacht Sales Inc., the official representative of the Miami/Fort Lauderdale FL headquarters.

---

## Contact details

---

Email: [andrey@shestakovyachtsales.com](mailto:andrey@shestakovyachtsales.com)

Web: [shestakovyachtsales.com/en/](http://shestakovyachtsales.com/en/)

---

## Telephones

---

USA: +1(954)274-4435

---

## Office hours

---

Monday – Saturday: **9:00 - 21:00** EDT

Sunday: **closed**

---

## Address

---



Harbour Towne Marina, 850 NE 3rd St,  
STE 213, Dania, FL 33004