

## BETTY — PRESENT YACHTS



**Builder:** PRESENT YACHTS

**Year Built:** 1984

**Model:** trawler

**Price:** PRICE ON APPLICATION

**Location:** United States

**LOA:** 42' (12.8mm)

**Beam:** 13.66

**Max Draft:** 3' 6" (1.07mm)

Our experienced yacht broker, Andrey Shestakov, will help you choose and buy a yacht that best suits your needs **Betty — PRESENT YACHTS** from our catalogue. Presently, at Shestakov Yacht Sales Inc., we have a wide variety of yachts available on our sale's list. We also work in close contact with all the big yacht manufacturers from all over the world.

If you would like to buy a yacht **Betty — PRESENT YACHTS** or would like help answering any questions concerning purchasing, selling or chartering a yacht, please call **+1(954)274-4435**

# TABLE OF CONTENTS

TABLE OF CONTENTS	2
SPECIFICATIONS	4
Overview	4
Basic Information	4
Dimensions	4
Speed, Capacities and Weight	4
Accommodations	5
Hull and Deck Information	5
Engine Information	5
PHOTOS	6
2	6
3	6
5	6
4	6
6	6
7	6
8	7
9	7
10	7
11	7
12	7
13	7
14	8
15	8
16	8
17	8
18	8
19	8

---

20	9
21	9
22	9
23	9
24	9
25	9
26	10
27	10
29	10
28	10
30	10
31	10
32	11
33	11
34	11
35	11
37	11
36	11
<b>CONTACTS</b>	<b>12</b>
Contact details	12
Telephones	12
Office hours	12
Address	12

---

---

# SPECIFICATIONS

---

## Overview

---

Live aboard, cruise the great loop, or spend this winter in the Bahamas! This 42 foot, 2 cabin trawler is ready to cruise. Beautiful teak joinery work throughout her interior, simple, reliable, and fuel efficient naturally aspirated Lehman 120hp diesel engines, cruise her at a very comfortable and efficient 8kts. The Island queen berth in the master aft cabin, complete with head, bathtub, and enough storage to absorb the largest wardrobe. There is even a desk in the aft cabin, so a couple who both work from home can be two rooms apart and still productive. Her large galley features a two burner induction cooktop, norcold ac/dc refrigeration, double sink, and lots of storage and work space. Dinette opposite the galley is great for casual meals or a large desk/work area! Forward cabin features two large twin berths in a bunk layout and a second head adjacent to the galley. Electric heaters throughout the boat keep her comfortable in all seasons.

## Basic Information

---

**Category:** trawler

**Sub Category:** Aft Cabin

**Model Year:** 1984

**Year Built:** 1984

**Country:** United States

## Dimensions

---

**LOA:** 42' (12.8mm)

**Beam:** 13.66

**Max Draft:** 3' 6" (1.07mm)

## Speed, Capacities and Weight

---

**Water Capacity:** 175 Gallons

**Holding Tank:** 40 Gal Gallons

**Fuel Capacity:** 440 Gal Gallons

---

## Accommodations

---

**Total Cabins:** 2

**Total Berths:** 4

**Total Heads:** 2

---

## Hull and Deck Information

---

**Hull Material:** Fiberglass

**Hull Designer:** CHB

---

## Engine Information

---

**Engines:** 2

**Manufacturer:** Lehman

**Engine Type:** Inboard

**Fuel Type:** Diesel

# PHOTOS

2



3



4



5



6



7





8



9



10



11



12



13





14



15



16



17



18



19





20



21



22



23



24



25





26



27



28



29



30



31





32



33



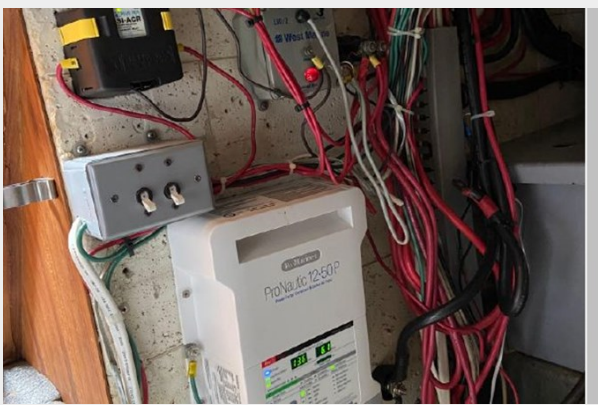
34



35



36



37





# CONTACTS

---

Andrey Shestakov, leading yacht broker of the sales department of Shestakov Yacht Sales Inc. Shestakov Yacht Sales Inc., the official representative of the Miami/Fort Lauderdale FL headquarters.

## Contact details

---

Email: [andrey@shestakovyachtsales.com](mailto:andrey@shestakovyachtsales.com)

Web: [shestakovyachtsales.com/en/](http://shestakovyachtsales.com/en/)

## Telephones

---

USA: +1(954)274-4435

## Office hours

---

Monday – Saturday: **9:00 - 21:00** EDT

Sunday: **closed**

## Address

---



Harbour Towne Marina, 850 NE 3rd St,  
STE 213, Dania, FL 33004