

WINDRIFT — MORGAN



Builder: MORGAN

Year Built: 1981

Model: Cruising Sailboat

Price: PRICE ON APPLICATION

Location: United States

LOA: 41' (12.5mm)

Beam: 13.75

Max Draft: 5' 2" (1.57mm)

Cruise Speed: 7 Knots Kts. (8 MPH)

Our experienced yacht broker, Andrey Shestakov, will help you choose and buy a yacht that best suits your needs **Windrift — MORGAN** from our catalogue. Presently, at Shestakov Yacht Sales Inc., we have a wide variety of yachts available on our sale's list. We also work in close contact with all the big yacht manufacturers from all over the world.

If you would like to buy a yacht **Windrift — MORGAN** or would like help answering any questions concerning purchasing, selling or chartering a yacht, please call **+1(954)274-4435**

TABLE OF CONTENTS

TABLE OF CONTENTS	2
SPECIFICATIONS	4
Overview	4
Basic Information	4
Dimensions	4
Speed, Capacities and Weight	4
Accommodations	4
Hull and Deck Information	5
Engine Information	5
PHOTOS	6
2	6
3	6
4	6
5	6
7	6
6	6
8	7
9	7
10	7
11	7
12	7
13	7
14	8
15	8
16	8
17	8
18	8
19	8

20	9
21	9
22	9
23	9
25	9
24	9
CONTACTS	10
Contact details	10
Telephones	10
Office hours	10
Address	10

SPECIFICATIONS

Overview

Windrift is a nicely updated example of the classic Morgan Out Island 41. She is the "Out Island 416" version, with a taller, 2 spreader main mast, giving improved performance on her extremely spacious layout. She makes a perfect live-aboard and long range cruiser. Interior professionally redone to a high standard. Standing Rigging replaced 2012 - along with major engine service including new mounts. All running rigging updated in 2016 New DC refrigeration - 2015 Additional 50amp power supply for year-round live aboard capability Entire Hull insulated for live-aboard comfort (NO condensation!)

Basic Information

Category: Cruising Sailboat

Sub Category: Cruising Sailboat

Model Year: 1981

Year Built: 1981

Country: United States

Dimensions

LOA: 41' (12.5mm)

Beam: 13.75

Max Draft: 5' 2" (1.57mm)

Speed, Capacities and Weight

Cruise Speed: 7 Knots Kts. (8 MPH)

Water Capacity: 171 Gallons

Holding Tank: 32 Gal Gallons

Fuel Capacity: 138 Gal Gallons

Accommodations

Total Cabins: 2

Total Berths: 2

Total Heads: 2

Hull and Deck Information

Hull Material: Fiberglass

Engine Information

Engines: 1

Manufacturer: Perkins

Engine Type: Inboard

Fuel Type: Diesel

PHOTOS

2



3



4



5



6



7



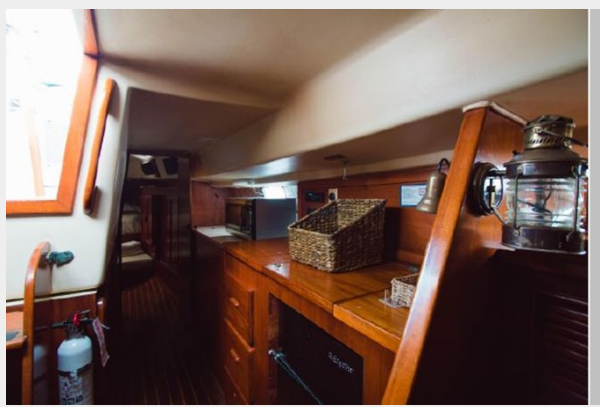
8



9



10



11



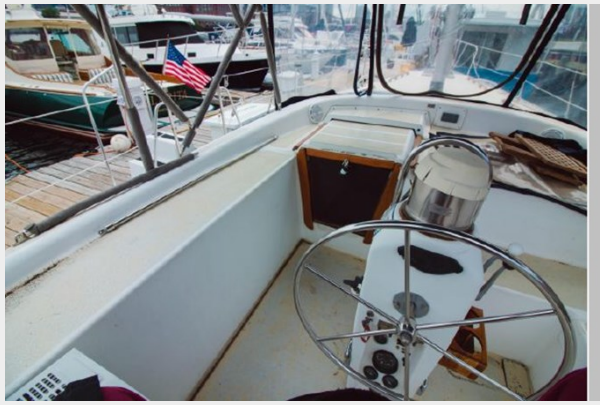
12



13



14



15



16



17



18



19



20



21



22



23



24



25



CONTACTS

Andrey Shestakov, leading yacht broker of the sales department of Shestakov Yacht Sales Inc. Shestakov Yacht Sales Inc., the official representative of the Miami/Fort Lauderdale FL headquarters.

Contact details

Email: andrey@shestakovyachtsales.com

Web: shestakovyachtsales.com/en/

Telephones

USA: +1(954)274-4435

Office hours

Monday – Saturday: **9:00 - 21:00** EDT

Sunday: **closed**

Address



Harbour Towne Marina, 850 NE 3rd St,
STE 213, Dania, FL 33004