

## INNISFAIL — CAPE DORY



**Builder:** CAPE DORY

**Year Built:** 1986

**Model:** Cutter

**Price:** PRICE ON APPLICATION

**Location:** United States

**LOA:** 35' 4" (10.77mm)

**Beam:** 10.25

**Min Draft:** 4' 10" (1.47mm)

Our experienced yacht broker, Andrey Shestakov, will help you choose and buy a yacht that best suits your needs **Innisfail — CAPE DORY** from our catalogue. Presently, at Shestakov Yacht Sales Inc., we have a wide variety of yachts available on our sale's list. We also work in close contact with all the big yacht manufacturers from all over the world.

If you would like to buy a yacht **Innisfail — CAPE DORY** or would like help answering any questions concerning purchasing, selling or chartering a yacht, please call **+1(954)274-4435**

# TABLE OF CONTENTS

TABLE OF CONTENTS	2
SPECIFICATIONS	5
Overview	5
Basic Information	5
Dimensions	5
Speed, Capacities and Weight	6
Accommodations	6
Hull and Deck Information	6
Engine Information	6
PHOTOS	7
2	7
3	7
5	7
4	7
7	8
6	8
8	8
9	8
10	9
11	9
13	9
12	9
14	9
15	9
16	10
17	10
18	10
19	10

---

20	11
21	11
22	11
23	11
24	12
25	12
26	12
27	12
28	13
29	13
30	13
31	13
32	14
33	14
34	14
35	14
36	14
37	14
38	15
39	15
40	15
41	15
42	15
43	15
44	16
45	16
46	16
47	16
48	16

---

---

49	16
50	17
51	17
53	17
52	17
54	17
55	17
56	18
57	18
58	18
59	18
60	18
61	18
62	19
63	19
CONTACTS	20
Contact details	20
Telephones	20
Office hours	20
Address	20

---

# SPECIFICATIONS

---

## Overview

---

The CD330 is fun and easy to sail — even when short-handed — because of her cutter rig with a self-tending, club-footed staysail. Her cutter rig and "full-keel" combine to make her stable and true on all points. She's an all-weather performer. The CD330 is powered with a 30 h.p. diesel. The cockpit of the Cape Dory 330 follows the successful Cape Dory 40 "T" shape to provide the skipper greater accessibility to instruments and winches. Three deep lockers provide ample space for docklines, fenders and assorted gear. The cockpit also features an innovative built-in CNG/LPG locker. Her wide, non-skid coaming tops provide a seat when going to windward. The interior of the CD330 has been engineered for optimum spaciousness, convenience and comfort. Her large cruising galley spans across the aft section of the cabin. The main salon has 2 settee berths (1 converts to a double berth) plus a large, solid teak dropleaf table. The head is extra spacious with a separate shower stall — features seldom found in 33 footers! The Cape Dory 330 emphasizes comfort — sailing comfort and living comfort. RECENT UPGRADES: 1 - New Raymarine EV-100 autopilot installed fall 2018 2 - The hull was soda blasted, hull preparation and barrier coat applied, then primer and 2 coats of ablative bottom paint 3 – 3 Group 31 deep cycle marine batteries replaced Summer 2019

## Basic Information

---

**Category:** Cutter

**Model Year:** 1986

**Year Built:** 1986

**Country:** United States

## Dimensions

---

**LOA:** 35' 4" (10.77mm)

**LWL:** 24' 6" (7.47mm)

**Beam:** 10.25

**Min Draft:** 4' 10" (1.47mm)

---

## Speed, Capacities and Weight

---

**Water Capacity:** 24 Gallons

**Holding Tank:** 33 Gal Gallons

**Fuel Capacity:** 20 Gal Gallons

---

## Accommodations

---

**Total Berths:** 5

**Total Heads:** 1

---

## Hull and Deck Information

---

**Hull Material:** Fiberglass

---

## Engine Information

---

**Engines:** 1

**Manufacturer:** westerbeke

**Engine Type:** Inboard

**Fuel Type:** Gas

# PHOTOS

2



3



4



5



6



7



8



9





10



11



12



13



14



15



16



17



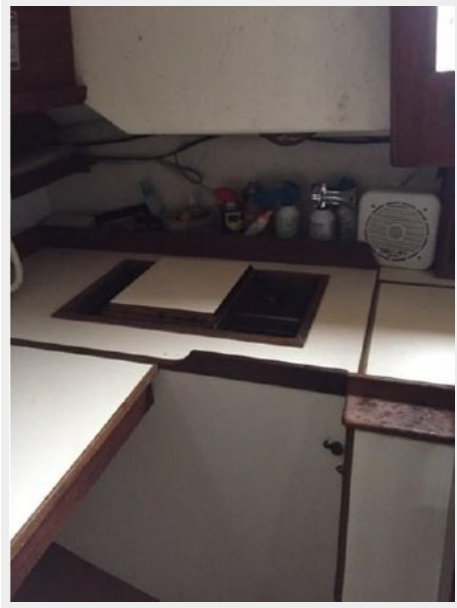
18



19



20



21



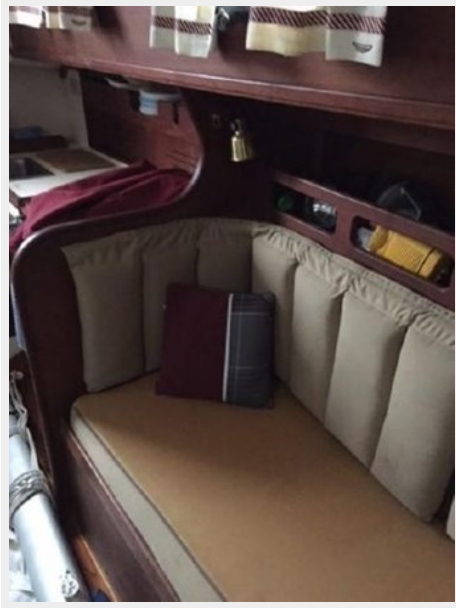
22



23



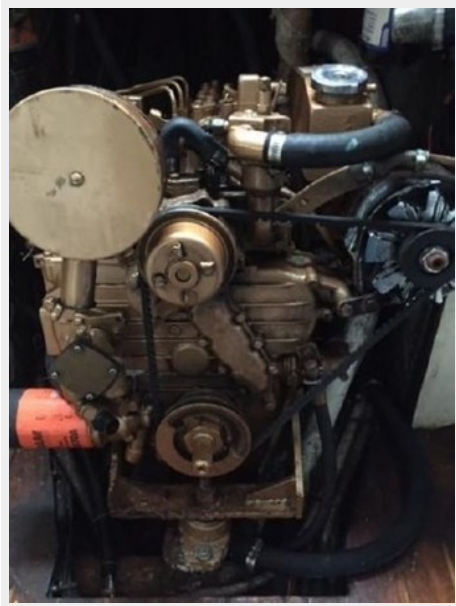
24



25



26



27



28



29



30



31



32



33



34



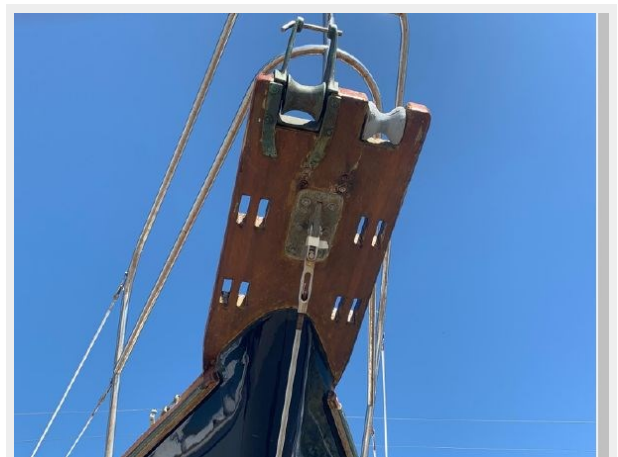
35



36



37



38



39



40



41



42



43



44



45



46



47



48



49

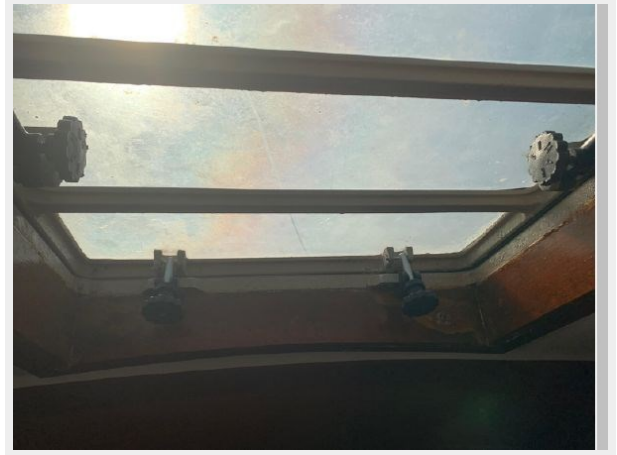




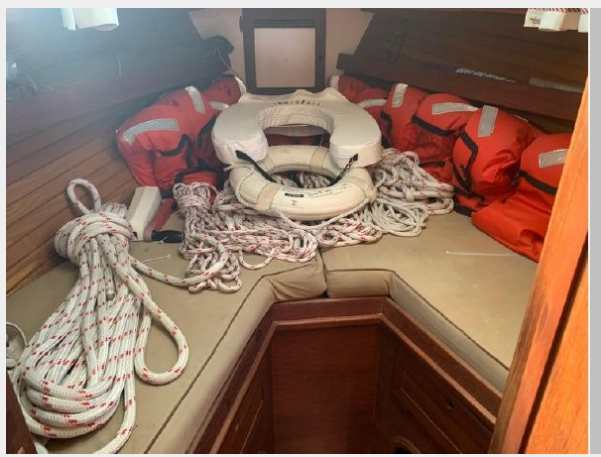
50



51



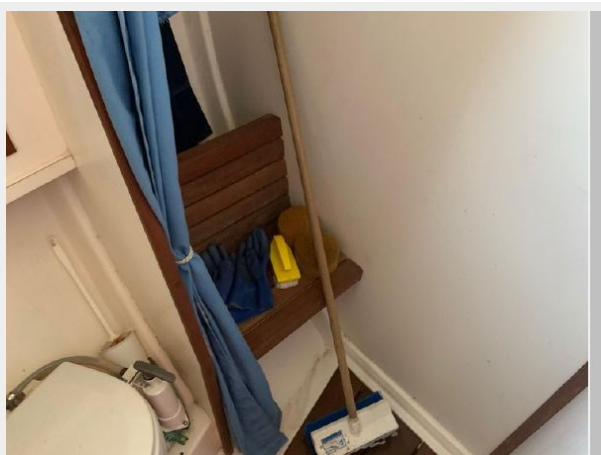
52



53



54



55



56



57



58



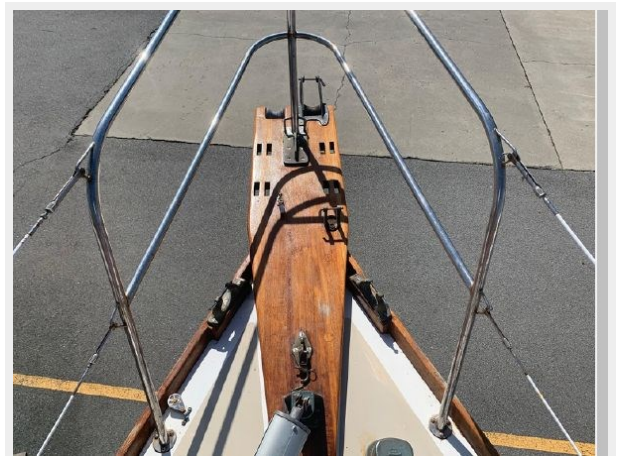
59



60



61



62



63



# CONTACTS

---

Andrey Shestakov, leading yacht broker of the sales department of Shestakov Yacht Sales Inc. Shestakov Yacht Sales Inc., the official representative of the Miami/Fort Lauderdale FL headquarters.

## Contact details

---

Email: [andrey@shestakovyachtsales.com](mailto:andrey@shestakovyachtsales.com)

Web: [shestakovyachtsales.com/en/](http://shestakovyachtsales.com/en/)

## Telephones

---

USA: +1(954)274-4435

## Office hours

---

Monday – Saturday: **9:00 - 21:00** EDT

Sunday: **closed**

## Address

---



Harbour Towne Marina, 850 NE 3rd St,  
STE 213, Dania, FL 33004