

FORAY — FORTIER



Builder: FORTIER

Year Built: 2001

Model: cruiser

Price: PRICE ON APPLICATION

Location: United States

LOA: 33' (10.06m)

Beam: 11.66

Cruise Speed: 23 Knots Kts. (26 MPH)

Max Speed: 29 Knots Kts. (33 MPH)

Our experienced yacht broker, Andrey Shestakov, will help you choose and buy a yacht that best suits your needs **Foray — FORTIER** from our catalogue. Presently, at Shestakov Yacht Sales Inc., we have a wide variety of yachts available on our sale's list. We also work in close contact with all the big yacht manufacturers from all over the world.

If you would like to buy a yacht **Foray — FORTIER** or would like help answering any questions concerning purchasing, selling or chartering a yacht, please call **+1(954)274-4435**

TABLE OF CONTENTS

TABLE OF CONTENTS	2
SPECIFICATIONS	3
Overview	3
Basic Information	3
Dimensions	3
Speed, Capacities and Weight	3
Accommodations	4
Hull and Deck Information	4
Engine Information	4
PHOTOS	5
2	5
3	5
5	5
4	5
6	5
7	5
8	6
9	6
10	6
11	6
12	6
13	6
CONTACTS	7
Contact details	7
Telephones	7
Office hours	7
Address	7

SPECIFICATIONS

Overview

FORAY is a great example of the sought after Eldridge-Mcinnis designed Fortier 33 Express. This much-admired vessel combines quality construction, seaworthiness, and classic styling to provide one of the most capable and attractive cruisers of this size. Twin Volvo Diesels, Full Electronic Display, Simrad Radar and GPS, Raytheon Auto-Pilot and VHF, New in 2019 Quick Windlass. Northern Lights GenSet.Hardtop with Full Enclosure, Stainless Hardware, Teak Cockpit Table, Teak Swim LadderBeautifully finished Teak Interior, Electric Head, Stand-up Shower, AC and Heat. Fully Galley.A Classic Cruiser that will get you Safely to your Destination with Pride and in Comfort.

Basic Information

Category: cruiser

Sub Category: Express

Model Year: 2001

Year Built: 2001

Country: United States

Dimensions

LOA: 33' (10.06mm)

Beam: 11.66

Speed, Capacities and Weight

Cruise Speed: 23 Knots Kts. (26 MPH)

Max Speed: 29 Knots Kts. (33 MPH)

Water Capacity: 40 Gallons

Holding Tank: 18 Gal Gallons

Fuel Capacity: 200 Gal Gallons

Accommodations

Total Cabins: 1

Total Heads: 1

Hull and Deck Information

Hull Material: Fiberglass

Engine Information

Engines: 1

Manufacturer: Volvo Penta

Engine Type: Inboard

Fuel Type: Diesel

PHOTOS

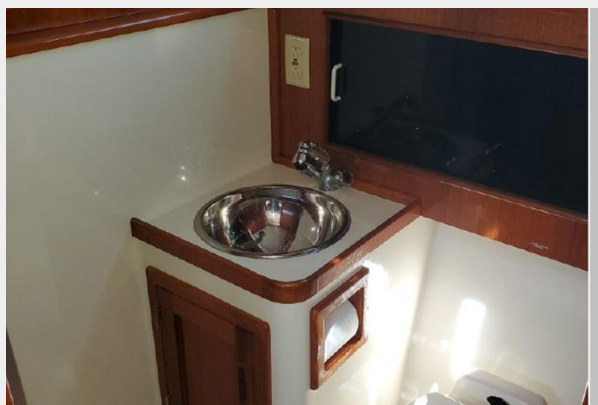
2



3



4



5



6



7



8



9



10



11



12



13



CONTACTS

Andrey Shestakov, leading yacht broker of the sales department of Shestakov Yacht Sales Inc. Shestakov Yacht Sales Inc., the official representative of the Miami/Fort Lauderdale FL headquarters.

Contact details

Email: andrey@shestakovyachtsales.com

Web: shestakovyachtsales.com/en/

Telephones

USA: +1(954)274-4435

Office hours

Monday – Saturday: **9:00 - 21:00** EDT

Sunday: **closed**

Address



Harbour Towne Marina, 850 NE 3rd St,
STE 213, Dania, FL 33004