

## BEACH 62 — JETTEN SHIPYARD



**Builder:** JETTEN SHIPYARD

**Year Built:** 2018

**Model:** Semi-Displacement

**Price:** PRICE ON APPLICATION

**Location:** Netherlands

**LOA:** 63' 4" (19.3mm)

**Beam:** 16.4

**Max Draft:** 4' 6" (1.36mm)

**Cruise Speed:** 10 Knots Kts. (12 MPH)

**Max Speed:** 22 Knots Kts. (25 MPH)

Our experienced yacht broker, Andrey Shestakov, will help you choose and buy a yacht that best suits your needs **Beach 62 — JETTEN SHIPYARD** from our catalogue. Presently, at Shestakov Yacht Sales Inc., we have a wide variety of yachts available on our sale's list. We also work in close contact with all the big yacht manufacturers from all over the world.

If you would like to buy a yacht **Beach 62 — JETTEN SHIPYARD** or would like help answering any questions concerning purchasing, selling or chartering a yacht, please call **+1(954)274-4435**

# TABLE OF CONTENTS

---

TABLE OF CONTENTS	2
SPECIFICATIONS	3
Overview	3
Basic Information	3
Dimensions	3
Speed, Capacities and Weight	3
Accommodations	3
Hull and Deck Information	4
Engine Information	4
PHOTOS	5
JE62B01 - image launch & trail- (1)	5
JE62B01 - image launch & trail- (3)	5
JE62B01 - image launch & trail- (8)	5
JE62B01 - image launch & trail- (12)	5
IMG_0577	5
IMG_0642-HDR	5
IMG_0657	6
IMG_0660-HDR	6
IMG_0663-HDR (Large)	6
IMG_0713-HDR	6
IMG_0714-HDR	6
IMG_0782-HDR	6
CONTACTS	7
Contact details	7
Telephones	7
Office hours	7
Address	7

---

# SPECIFICATIONS

---

## Overview

---

LAUNCHED IN 2020!! The **Jetten Beach 62** redefines the modern motor yacht. She is a brand new modern Dutch design full of interesting panoramic views.

## Basic Information

---

**Category:** Semi-Displacement

**Sub Category:** Semi-Displacement

**Model Year:** 2020

**Year Built:** 2018

**Country:** Netherlands

## Dimensions

---

**LOA:** 63' 4" (19.3mm)

**Beam:** 16.4

**Max Draft:** 4' 6" (1.36mm)

## Speed, Capacities and Weight

---

**Cruise Speed:** 10 Knots Kts. (12 MPH)

**Max Speed:** 22 Knots Kts. (25 MPH)

**Water Capacity:** 820 Gallons

**Holding Tank:** 97.74 Gal Gallons

**Fuel Capacity:** 1067.26 Gal Gallons

## Accommodations

---

**Total Cabins:** 3

**Total Berths:** 6

**Sleeps:** 6

**Total Heads:** 2

---

## Hull and Deck Information

---

**Hull Material:** Aluminum

**Deck Material:** Aluminum

**Hull Configuration:** Full  
Displacement/Planing Hull

**Hull Color:** white

**Hull Designer:** Van Oosanen FDHF

**Exterior Designer:** Cor D Rover

**Interior Designer:** Cor D Rover

---

## Engine Information

---

**Engines:** 2

**Manufacturer:** Cummins

**Engine Type:** Inboard

**Fuel Type:** Diesel

# PHOTOS

**JE62B01 - image launch & trail- (1)**



**JE62B01 - image launch & trail- (3)**



**JE62B01 - image launch & trail- (8)**



**JE62B01 - image launch & trail- (12)**



**IMG\_0577**



**IMG\_0642-HDR**



IMG\_0657



IMG\_0660-HDR



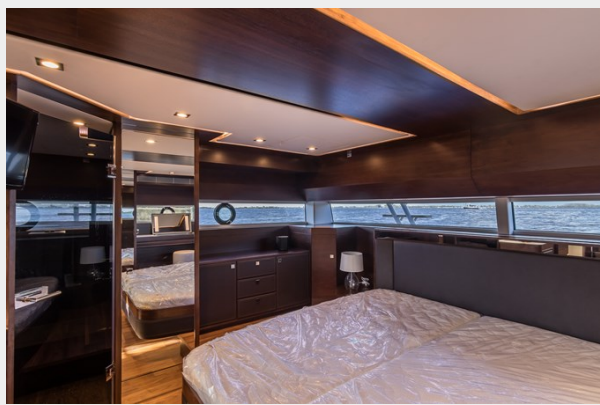
IMG\_0663-HDR (Large)



IMG\_0713-HDR



IMG\_0714-HDR



IMG\_0782-HDR



# CONTACTS

---

Andrey Shestakov, leading yacht broker of the sales department of Shestakov Yacht Sales Inc. Shestakov Yacht Sales Inc., the official representative of the Miami/Fort Lauderdale FL headquarters.

## Contact details

---

Email: [andrey@shestakovyachtsales.com](mailto:andrey@shestakovyachtsales.com)

Web: [shestakovyachtsales.com/en/](http://shestakovyachtsales.com/en/)

## Telephones

---

USA: +1(954)274-4435

## Office hours

---

Monday – Saturday: **9:00 - 21:00** EDT

Sunday: **closed**

## Address

---



Harbour Towne Marina, 850 NE 3rd St,  
STE 213, Dania, FL 33004